

# KD-Validated Anti-RBMS1 Mouse Monoclonal Antibody



**Catalog #: 65922**

## Aliases

RBMS1; RNA Binding Motif Single Stranded Interacting Protein 1; SCR2; C2orf12; MSSP-1; MSSP-2; MSSP-3; HCC-4; YC1; RNA-Binding Motif, Single-Stranded-Interacting Protein 1; Suppressor Of Cdc 2 (Cdc13) With RNA Binding Motif 2; Suppressor Of CDC2 With RNA-Binding Motif; C-Myc Gene Single Strand Binding Protein 2; Single-Stranded DNA-Binding Protein MSSP-1; DKFZp564H0764; MSSP; Chromosome 2 Open Reading Frame 12; Cervical Cancer Oncogene 4; MSSP1

## Background

NCBI Gene Entry: [5937](#)

UniProt Entry: [P29558](#)

## Application Information

Molecular Weight: Predicted, 45 kDa; observed, 49 kDa

Clonality: Mouse monoclonal antibody

Clone ID: 25GB5845

Species Reactivity: Human, mouse, rat

Applications Tested: Western blotting (WB), flow cytometry (FCM)

## Immunogen

Recombinant protein of human RBMS1

## Isotype

Mouse IgG1

## Storage Buffer

Supplied in PBS (pH 7.4) containing 50% glycerol, and 0.02% sodium azide.

## Storage

Store at -20 °C for one year.

## Recommended Dilutions

Western Blotting (WB): 1:500-1:2,500

Flow Cytometry (FCM): 1:200-1:2,000

---

### SUPPORT

SUPPORT@GENUINBIOTECH.COM  
TEL: +1-540-855-7041

### ORDERS

SALES@GENUINBIOTECH.COM  
FAX: +1-540-855-7041

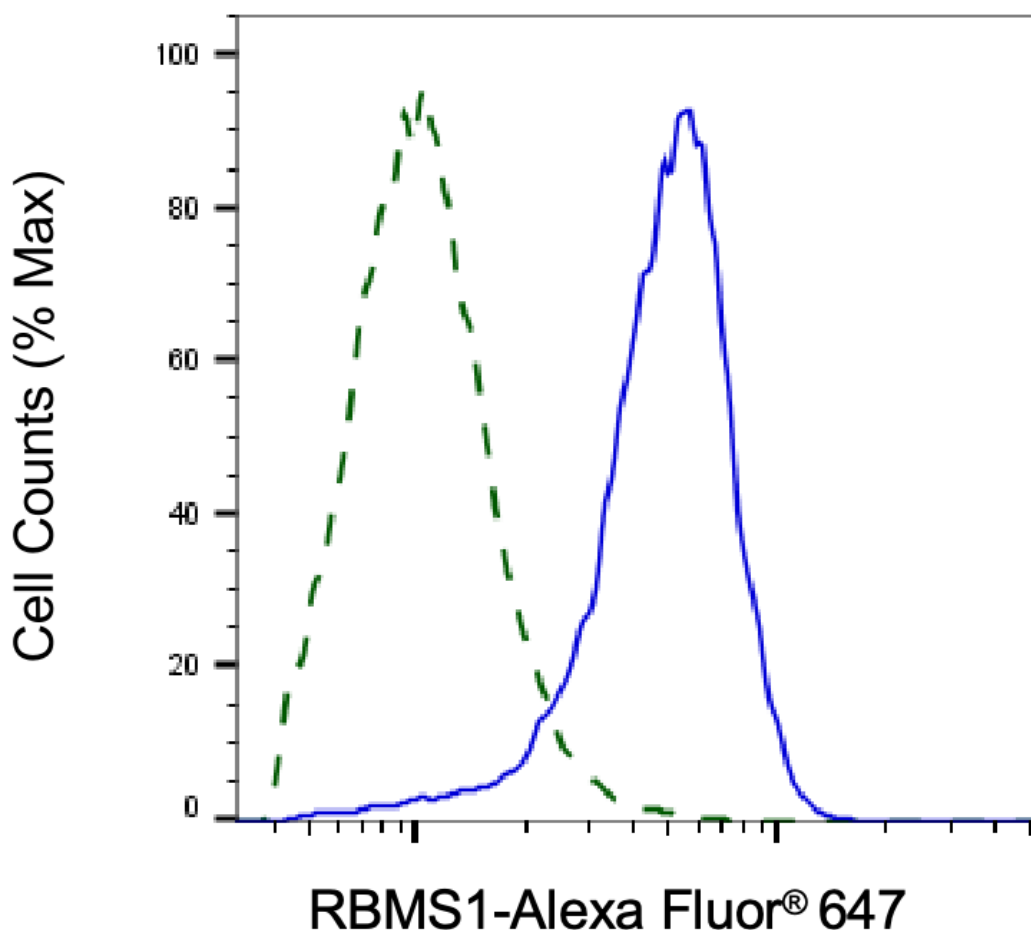
[WWW.GENUINBIOTECH.COM](http://WWW.GENUINBIOTECH.COM)

## KD-Validated Anti-RBMS1 Mouse Monoclonal Antibody

PAGE 2

**Note:** This product is for research use only.

### Validation Data



Copyright ©2025 Genuin Biotechnologies LLC

Validation of RBMS1 knockdown using flow cytometry. Wild-type(WT, Blue) and knockdown(KD, Green) HeLa cells were stained with anti-RBMS1 antibody (Cat#65922, 1:2,000) and analyzed using BD flow cytometer.

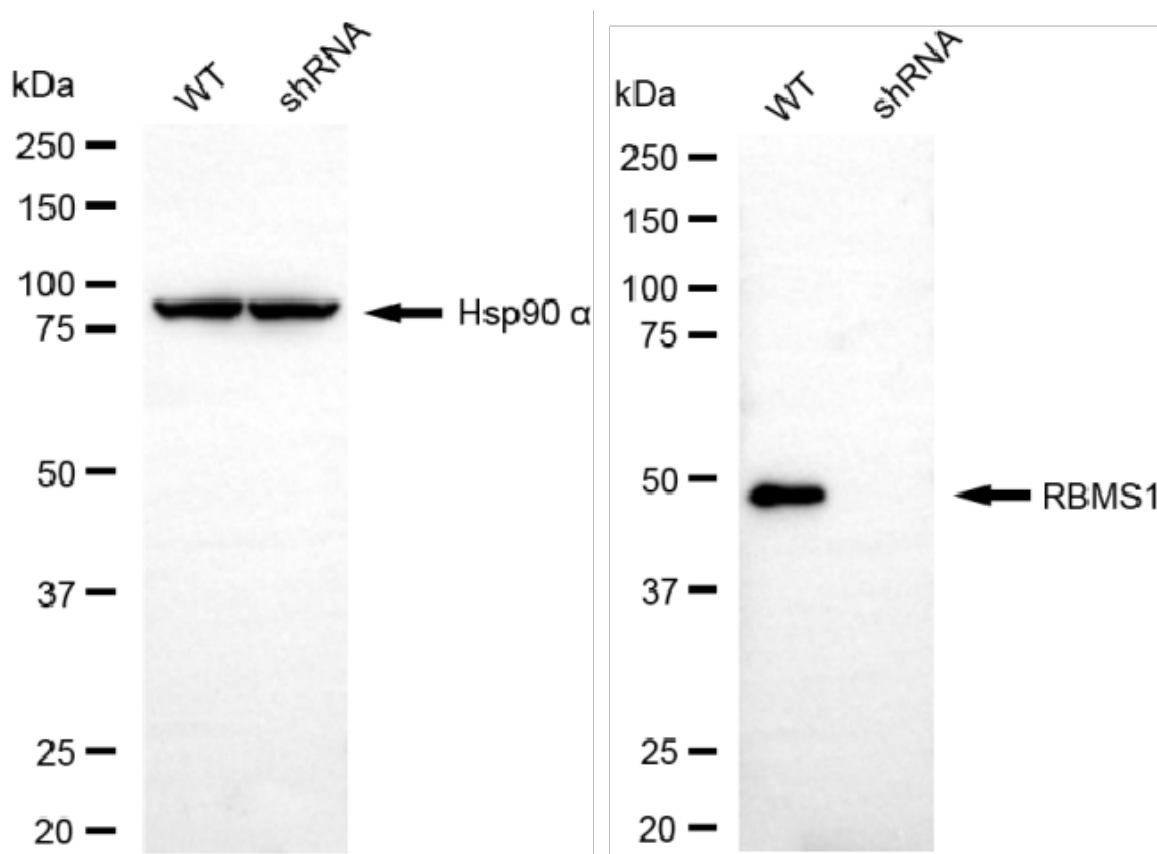
#### SUPPORT

SUPPORT@GENUINBIOTECH.COM  
TEL: +1-540-855-7041

#### ORDERS

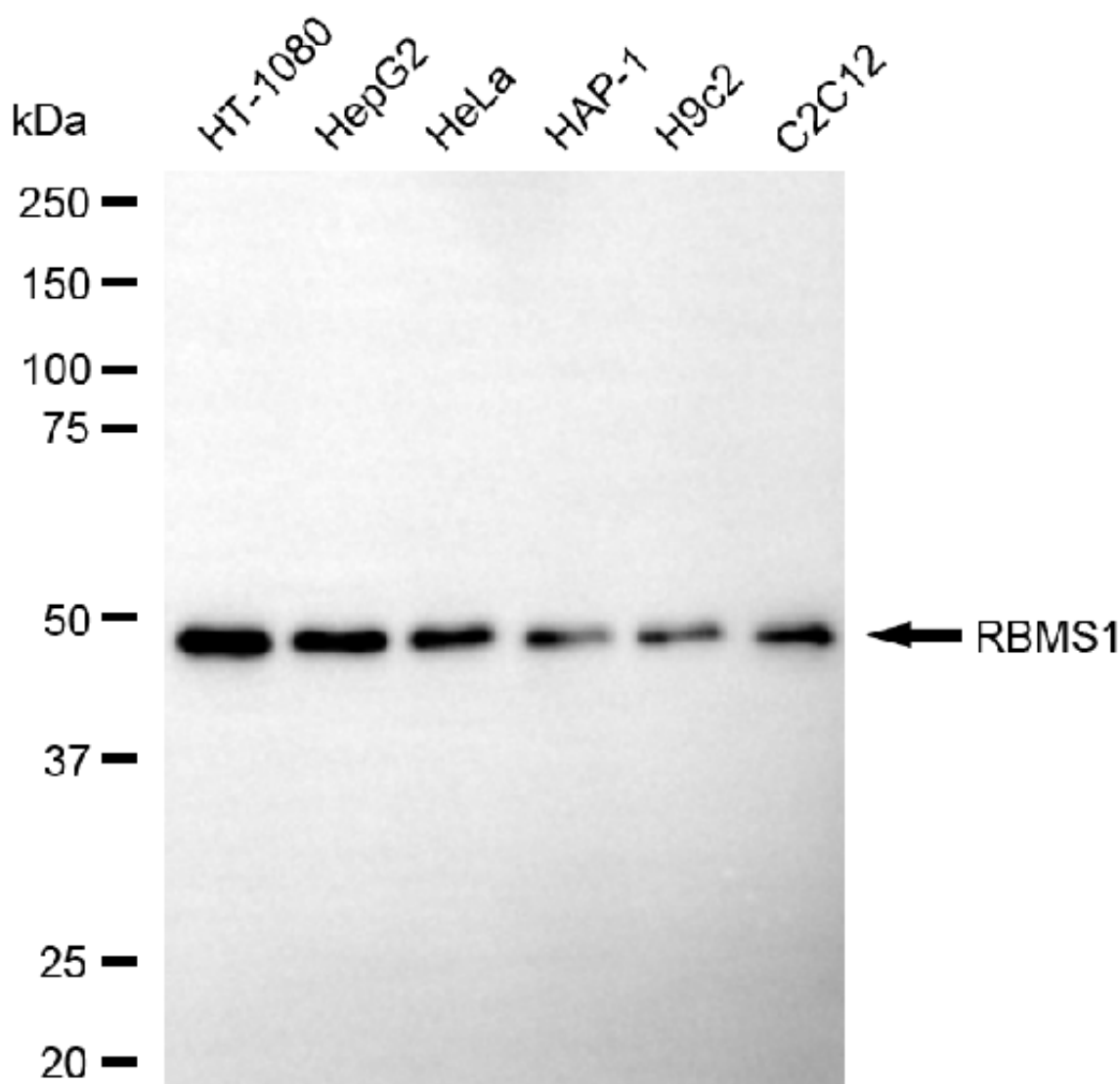
SALES@GENUINBIOTECH.COM  
FAX: +1-540-855-7041

[WWW.GENUINBIOTECH.COM](http://WWW.GENUINBIOTECH.COM)



Copyright ©2025 Genuin Biotechnologies LLC

Western blotting analysis using anti-RBMS1 antibody (Cat#65922). RBMS1 expression in wild-type (WT) and RBMS1 shRNA knockdown (KD) HeLa cells with 20  $\mu$ g of total cell lysates. Hsp90  $\alpha$  serves as a loading control. The blot was incubated with anti-RBMS1 antibody (Cat#65922, 1:2,500) and HRP-conjugated goat anti-mouse secondary antibody (Cat#101, 1:20,000) respectively. Image was developed using FeQ™ ECL Substrate Kit (Cat#226).



Copyright ©2025 Genuin Biotechnologies LLC

Western blotting analysis using anti-RBMS1 antibody (Cat#65922). Total cell lysates (30  $\mu$ g) from various cell lines were loaded and separated by SDS-PAGE. The blot was incubated with anti-RBMS1 antibody (Cat#65922, 1:2,500) and HRP-conjugated goat anti-mouse secondary antibody (Cat#101, 1:20,000) respectively. Image was developed using FeQ™ ECL Substrate Kit (Cat#226).