

KD-Validated Anti-MAGEB2 Mouse Monoclonal Antibody



Catalog #: 65930

Aliases

MAGEB2; MAGE Family Member B2; CT3.2; DAM6; Melanoma-Associated Antigen B2; MAGE-XP-2; DSS/AHC Critical Interval MAGE Superfamily 6; Cancer/Testis Antigen Family 3, Member 2; Melanoma Antigen Family B2; Cancer/Testis Antigen 3.2; MAGE XP-2 Antigen; MAGE-B2 Antigen; MGC26438; DSS-AHC Critical Interval MAGE Superfamily 6; Melanoma Antigen Family B, 2

Background

NCBI Gene Entry: [4113](#)

UniProt Entry: [O15479](#)

Application Information

Molecular Weight: Predicted, 35 kDa; observed, 37 kDa

Clonality: Mouse monoclonal antibody

Clone ID: 25GB5885

Species Reactivity: Human

Applications Tested: Western blotting (WB)

Immunogen

Recombinant protein of human MAGEB2

Isotype

Mouse IgG1

Storage Buffer

Supplied in PBS (pH 7.4) containing 50% glycerol, and 0.02% sodium azide.

Storage

Store at -20 °C for one year.

Recommended Dilutions

Western Blotting (WB): 1:500-1:2,500

Note: This product is for research use only.

Validation Data

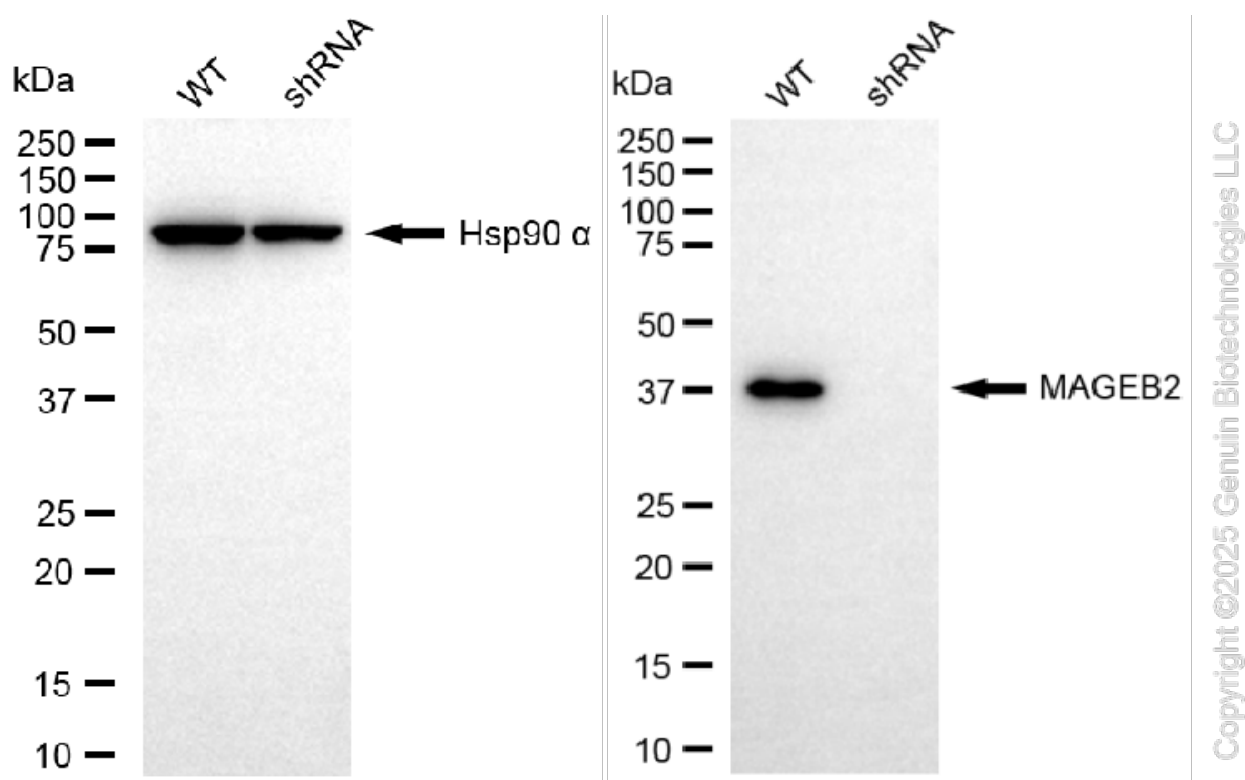
SUPPORT

SUPPORT@GENUINBIOTECH.COM
TEL: +1-540-855-7041

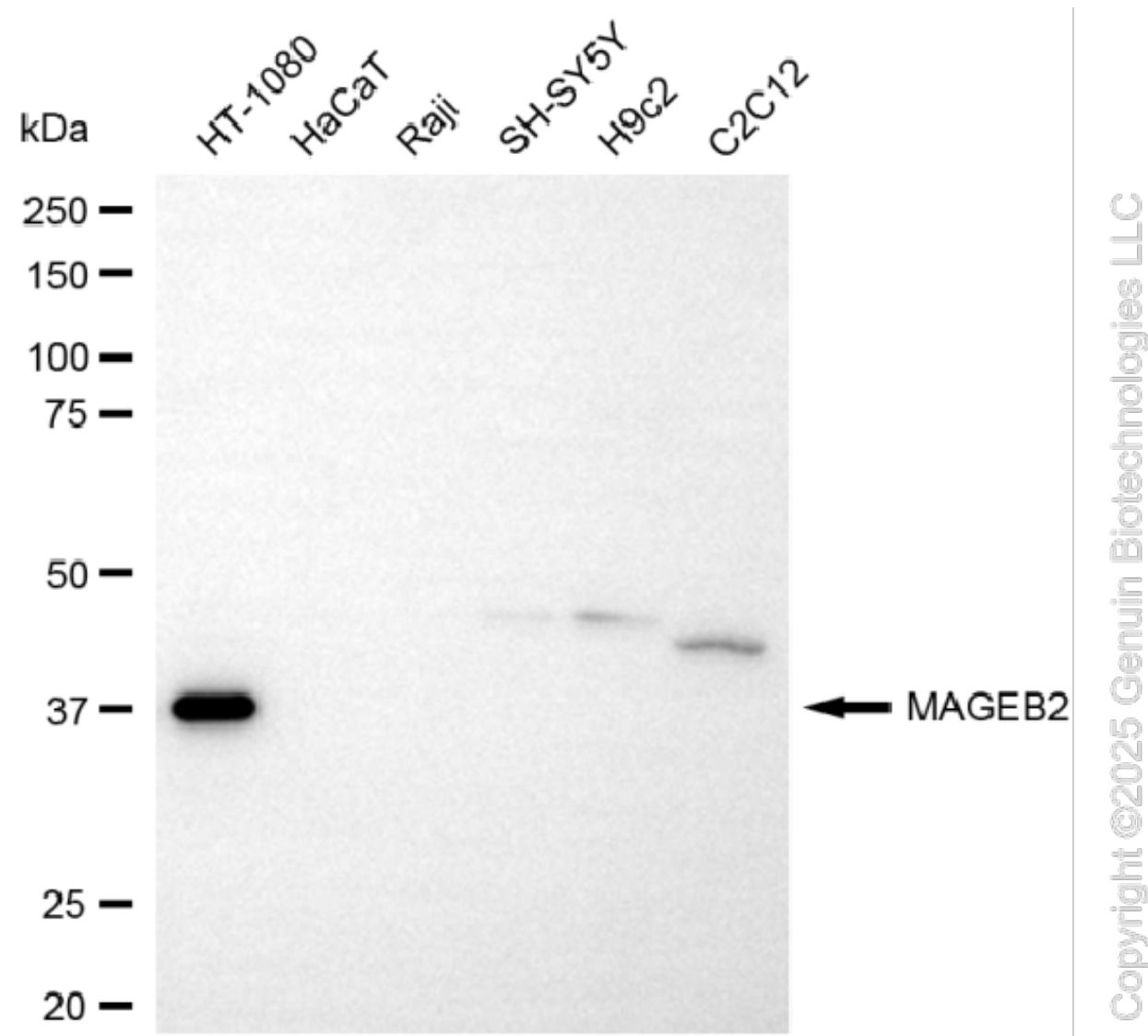
ORDERS

SALES@GENUINBIOTECH.COM
FAX: +1-540-855-7041

WWW.GENUINBIOTECH.COM



Western blotting analysis using anti-MAGEB2 antibody (Cat#65930). MAGEB2 expression in wild-type (WT) and MAGEB2 shRNA knockdown (KD) HepG2 cells with 20 µg of total cell lysates. Hsp90 α serves as a loading control. The blot was incubated with anti-MAGEB2 antibody (Cat#65930, 1:2,500) and HRP-conjugated goat anti-mouse secondary antibody (Cat#101, 1:20,000) respectively. Image was developed using NaQ™ ECL Substrate Kit (Cat#716).



Western blotting analysis using anti-MAGEB2 antibody (Cat#65930). Total cell lysates (30 µg) from various cell lines were loaded and separated by SDS-PAGE. The blot was incubated with anti-MAGEB2 antibody (Cat#65930, 1:2,500) and HRP-conjugated goat anti-mouse secondary antibody (Cat#101, 1:20,000) respectively. Image was developed using NaQ™ ECL Substrate Kit (Cat#716).