

KD-Validated Anti-TBL1XR1 Mouse Monoclonal Antibody



Catalog #: 65932

Aliases

TBL1XR1; TBL1X/Y Related 1; TBLR1; IRA1; F-Box-Like/WD Repeat-Containing Protein TBL1XR1; DC42; C21; Nuclear Receptor Corepressor/HDAC3 Complex Subunit TBLR1; Transducin Beta Like 1 X-Linked Receptor 1; TBL1-Related Protein 1; TBL1X Receptor 1; FLJ12894; Nuclear Receptor Co-Repressor/HDAC3 Complex Subunit; Transducin (Beta)-Like 1X-Linked Receptor 1; Transducin Beta-Like 1X-Related Protein 1; TBL1-Related Protein; MRD41

Background

NCBI Gene Entry: [79718](#)

UniProt Entry: [Q9BZK7](#)

Application Information

Molecular Weight: Predicted, 56 kDa; observed, 49-56 kDa

Clonality: Mouse monoclonal antibody

Clone ID: 25GB5895

Species Reactivity: Human, mouse, rat

Applications Tested: Western blotting (WB), flow cytometry (FCM)

Immunogen

Recombinant protein of human TBL1XR1

Isotype

Mouse IgG1

Storage Buffer

Supplied in PBS (pH 7.4) containing 50% glycerol, and 0.02% sodium azide.

Storage

Store at -20 °C for one year.

Recommended Dilutions

Western Blotting (WB): 1:500-1:2,500

Flow Cytometry (FCM): 1:200-1:2,000

SUPPORT

SUPPORT@GENUINBIOTECH.COM
TEL: +1-540-855-7041

ORDERS

SALES@GENUINBIOTECH.COM
FAX: +1-540-855-7041

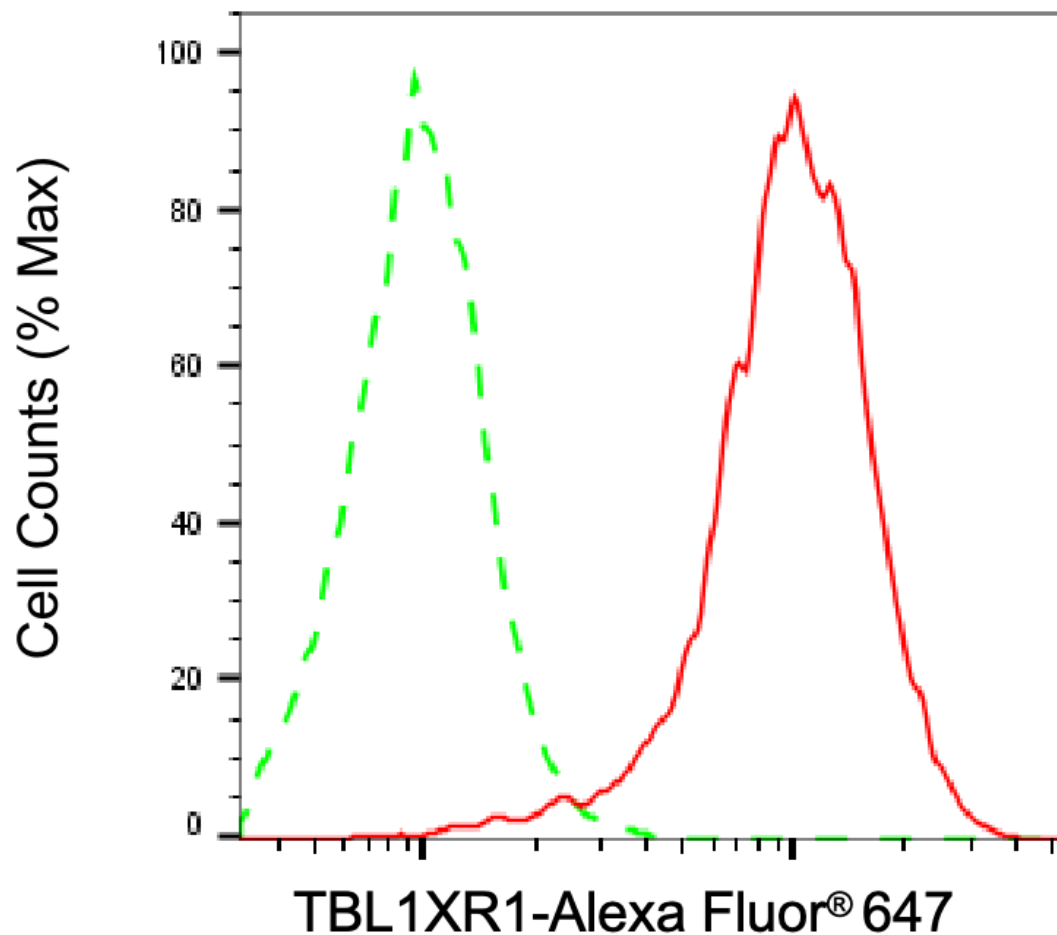
WWW.GENUINBIOTECH.COM

KD-Validated Anti-TBL1XR1 Mouse Monoclonal Antibody

PAGE 2

Note: This product is for research use only.

Validation Data



Copyright ©2025 Genuin Biotechnologies LLC

Flow cytometric analysis of TBL1XR1 expression in HepG2 cells using anti-TBL1XR1 antibody (Cat#65932, 1:2,000). Green, isotype control; red, TBL1XR1.

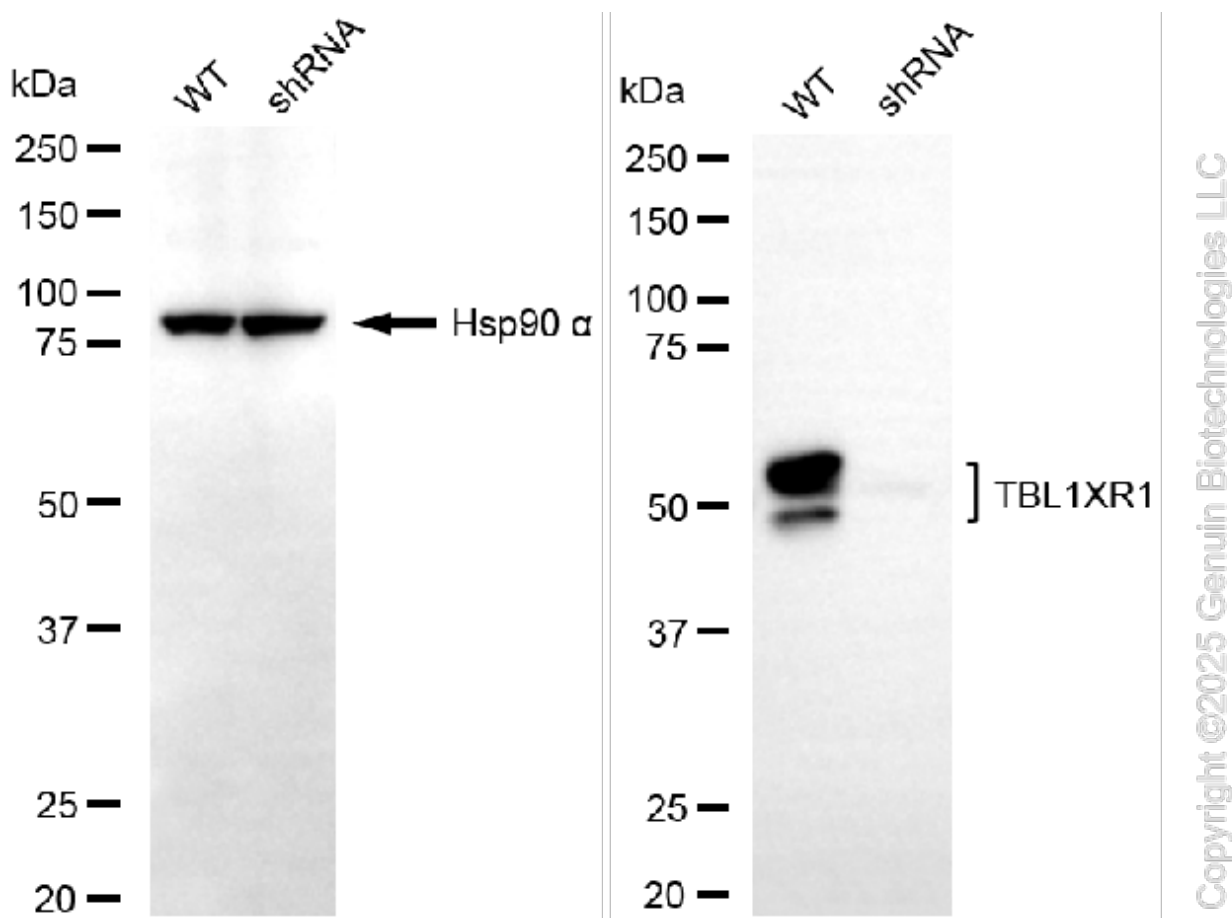
SUPPORT

SUPPORT@GENUINBIOTECH.COM
TEL: +1-540-855-7041

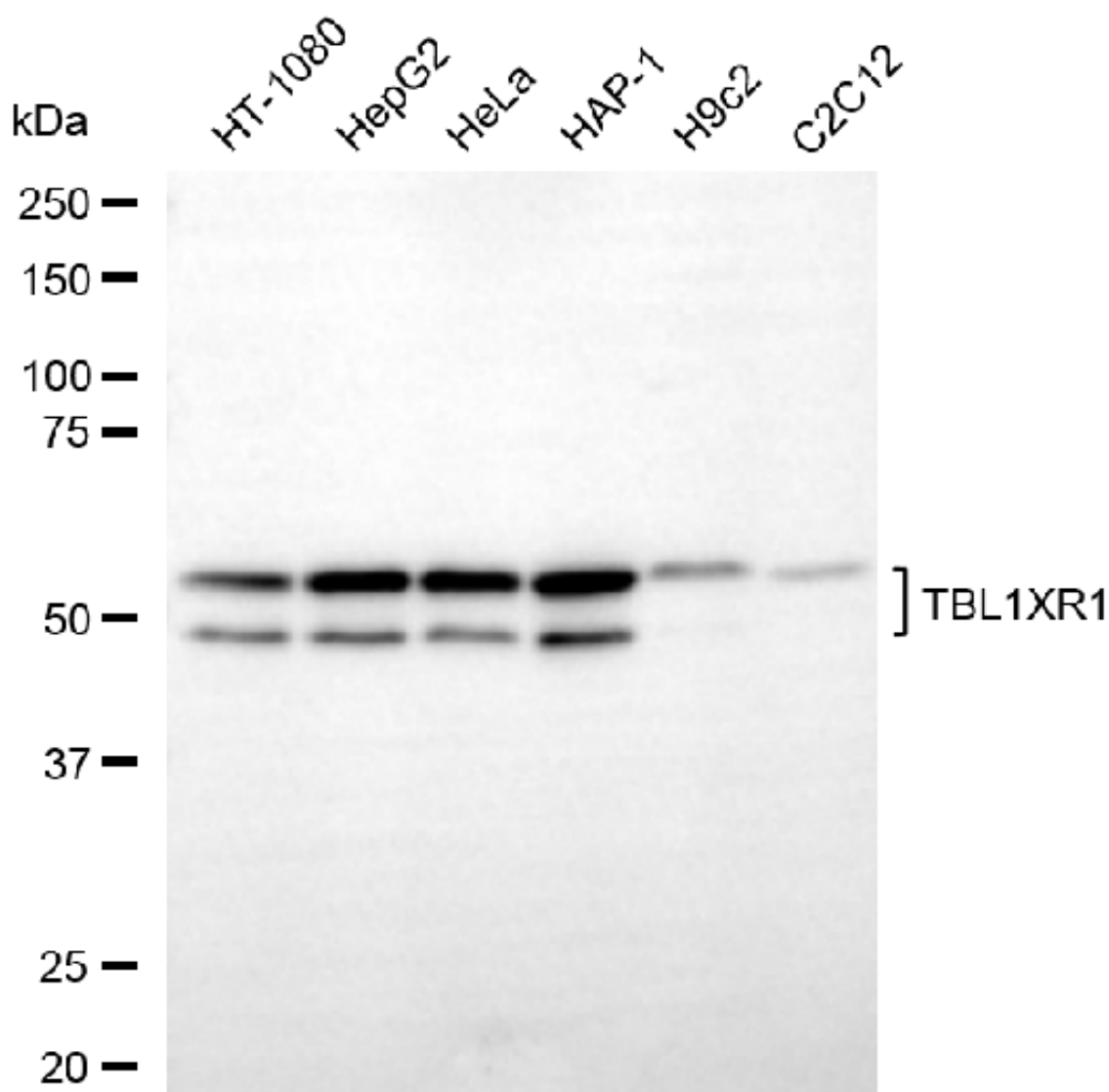
ORDERS

SALES@GENUINBIOTECH.COM
FAX: +1-540-855-7041

WWW.GENUINBIOTECH.COM



Western blotting analysis using anti-TBL1XR1 antibody (Cat#65932). TBL1XR1 expression in wild-type (WT) and TBL1XR1 shRNA knockdown (KD) HeLa cells with 20 µg of total cell lysates. Hsp90 α serves as a loading control. The blot was incubated with anti-TBL1XR1 antibody (Cat#65932, 1:2,500) and HRP-conjugated goat anti-mouse secondary antibody (Cat#101, 1:20,000) respectively. Image was developed using FeQ™ ECL Substrate Kit (Cat#226).



Copyright ©2025 Genuin Biotechnologies LLC

Western blotting analysis using anti-TBL1XR1 antibody (Cat#65932). Total cell lysates (30 µg) from various cell lines were loaded and separated by SDS-PAGE. The blot was incubated with anti-TBL1XR1 antibody (Cat#65932, 1:2,500) and HRP-conjugated goat anti-mouse secondary antibody (Cat#101, 1:20,000) respectively. Image was developed using FeQ™ ECL Substrate Kit (Cat#226).