

KD-Validated Anti-PYCR1 Mouse Monoclonal Antibody



Catalog #: 65934

Aliases

PYCR1; Pyrroline-5-Carboxylate Reductase 1; P5C; Pyrroline-5-Carboxylate Reductase 1, Mitochondrial; P5C Reductase 1; EC 1.5.1.2; Proliferation-Inducing Protein 45; ARCL2B; ARCL3B; P5CR 1; PIG45; PP222; P5CR; PRO3; PYCR

Background

NCBI Gene Entry: [5831](#)

UniProt Entry: [P32322](#)

Application Information

Molecular Weight: Predicted, 33 kDa; observed, 31 kDa

Clonality: Mouse monoclonal antibody

Clone ID: 25GB5905

Species Reactivity: Human, mouse, rat

Applications Tested: Western blotting (WB), immunocytochemistry (IC)

Immunogen

Recombinant protein of human PYCR1

Isotype

Mouse IgG1

Storage Buffer

Supplied in PBS (pH 7.4) containing 50% glycerol, and 0.02% sodium azide.

Storage

Store at -20 °C for one year.

Recommended Dilutions

Western Blotting (WB): 1:500-1:2,500

Immunocytochemistry (IC): 1:100-1:1,000

Note: This product is for research use only.

Validation Data

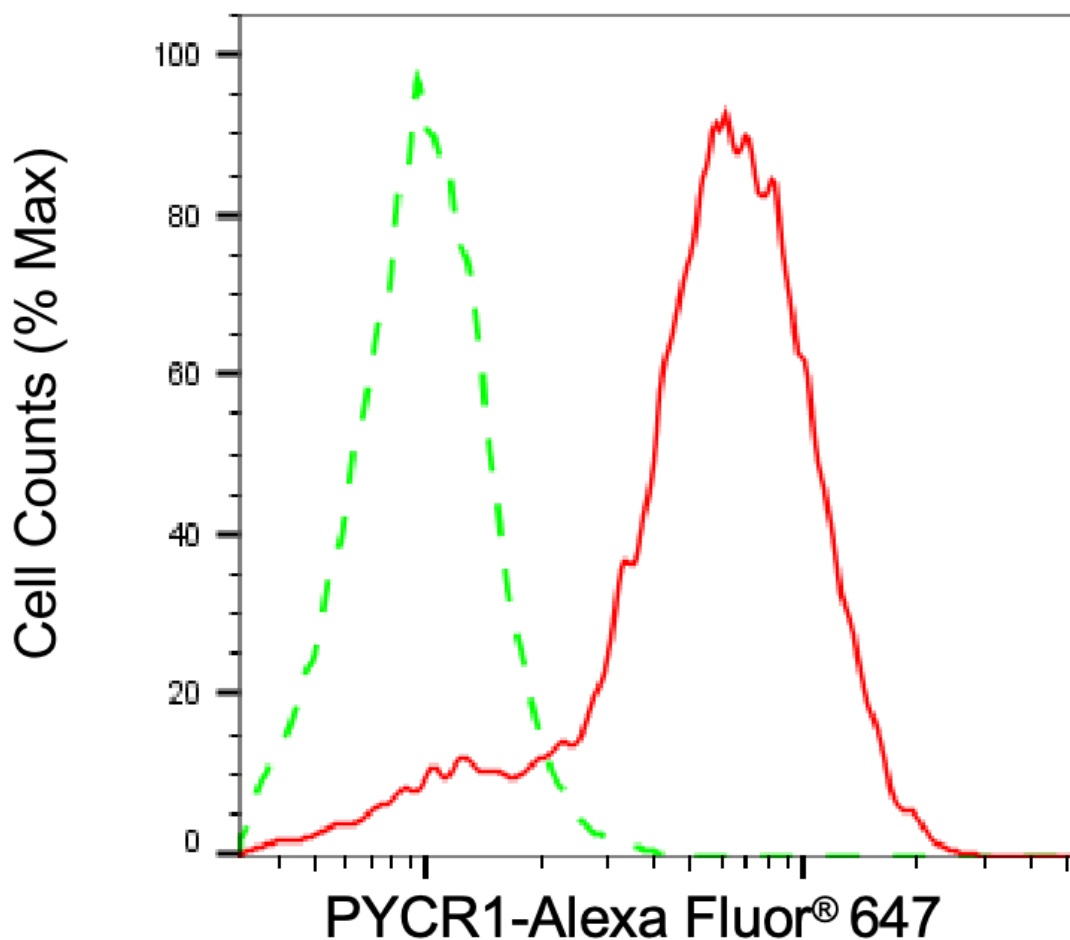
SUPPORT

SUPPORT@GENUINBIOTECH.COM
TEL: +1-540-855-7041

ORDERS

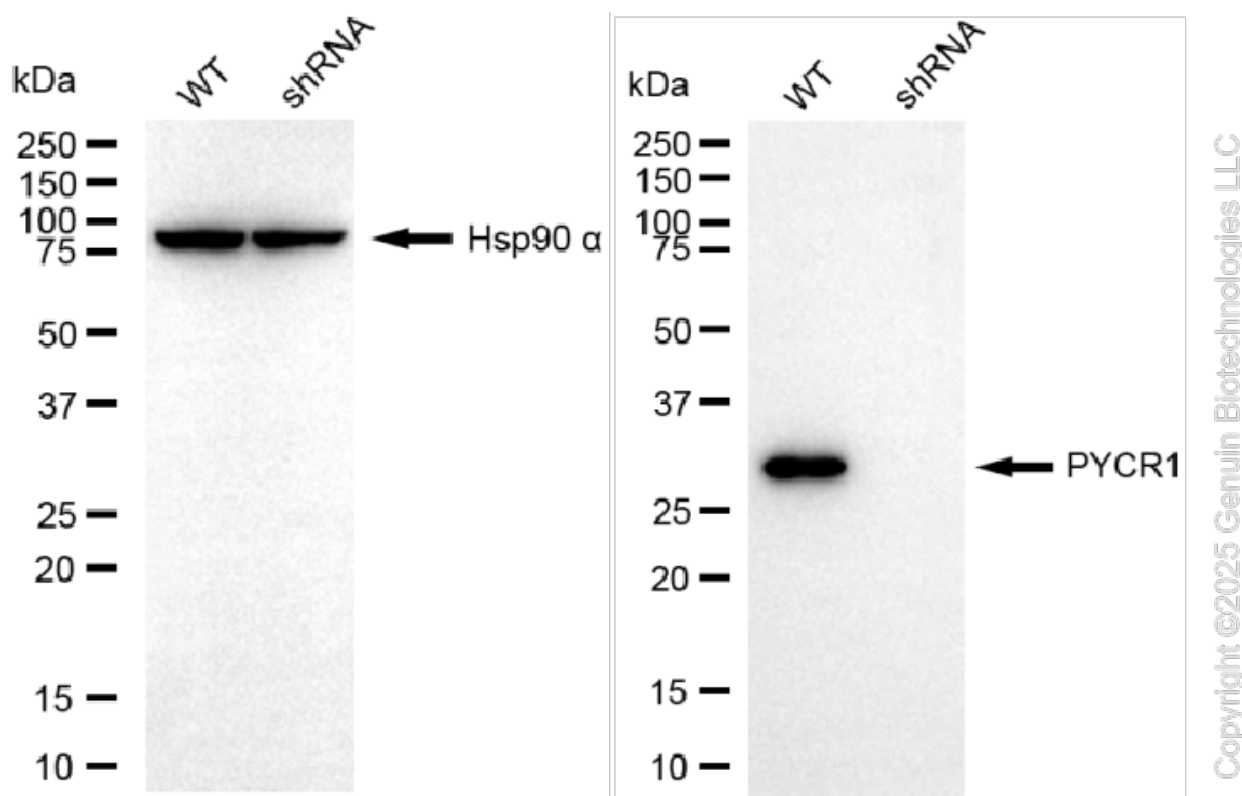
SALES@GENUINBIOTECH.COM
FAX: +1-540-855-7041

WWW.GENUINBIOTECH.COM

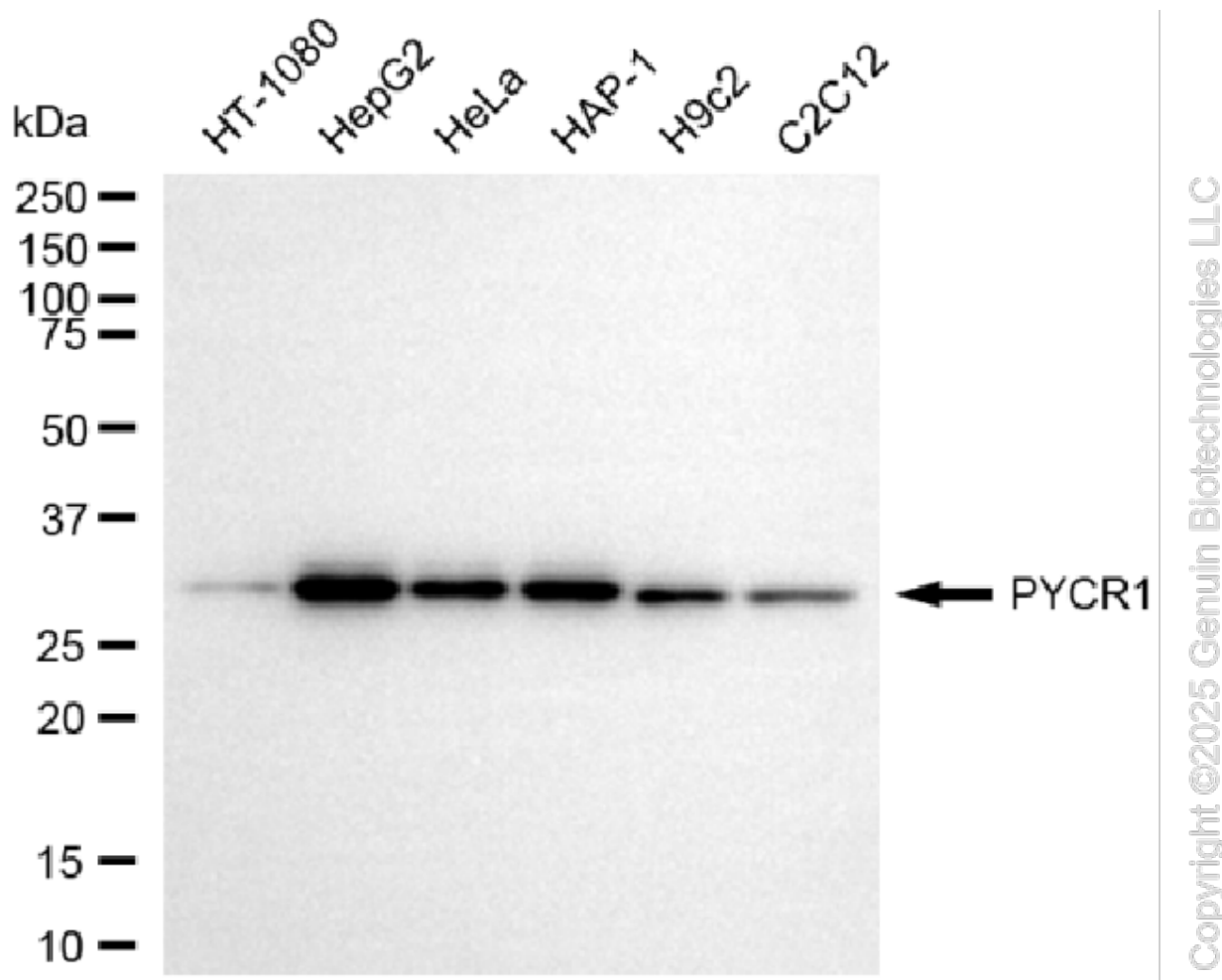


Copyright ©2025 Genuin Biotechnologies LLC

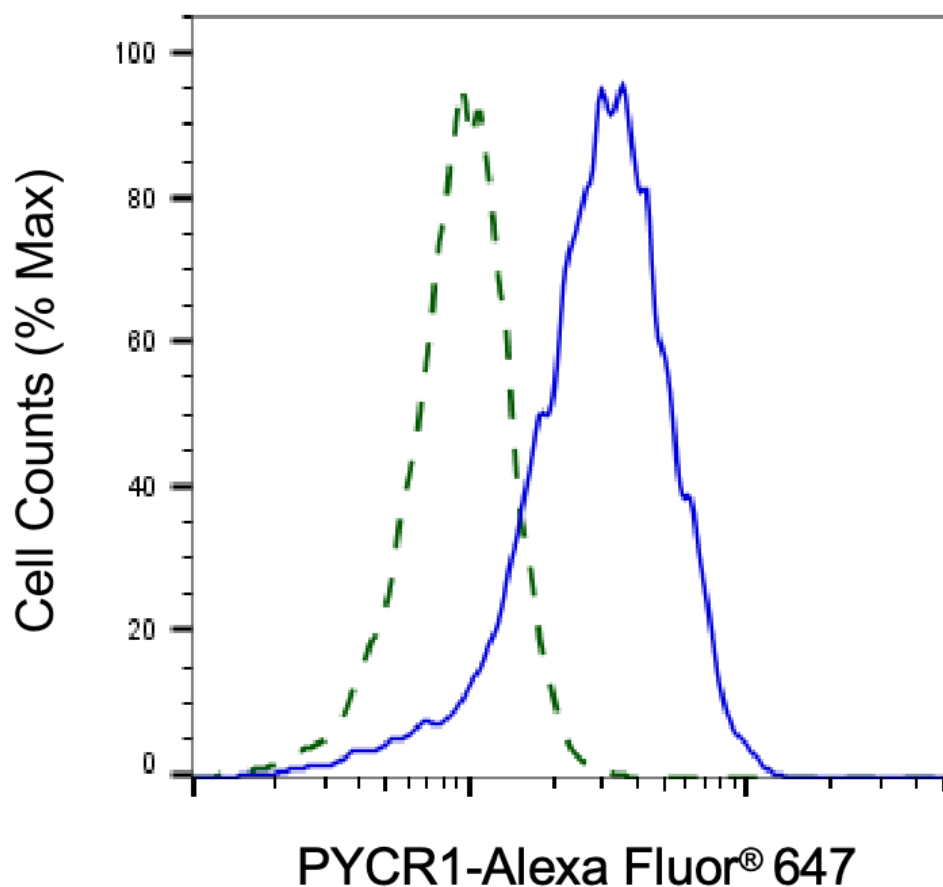
Flow cytometric analysis of PYCR1 expression in HepG2 cells using anti-PYCR1 antibody (Cat#65934, 1:2,000). Green, isotype control; red, PYCR1.



Western blotting analysis using anti-PYCR1 antibody (Cat#65934). PYCR1 expression in wild-type (WT) and PYCR1 shRNA knockdown (KD) HeLa cells with 20 μ g of total cell lysates. Hsp90 α serves as a loading control. The blot was incubated with anti-PYCR1 antibody (Cat#65934, 1:2,500) and HRP-conjugated goat anti-mouse secondary antibody (Cat#101, 1:20,000) respectively. Image was developed using NaQTM ECL Substrate Kit (Cat#716).

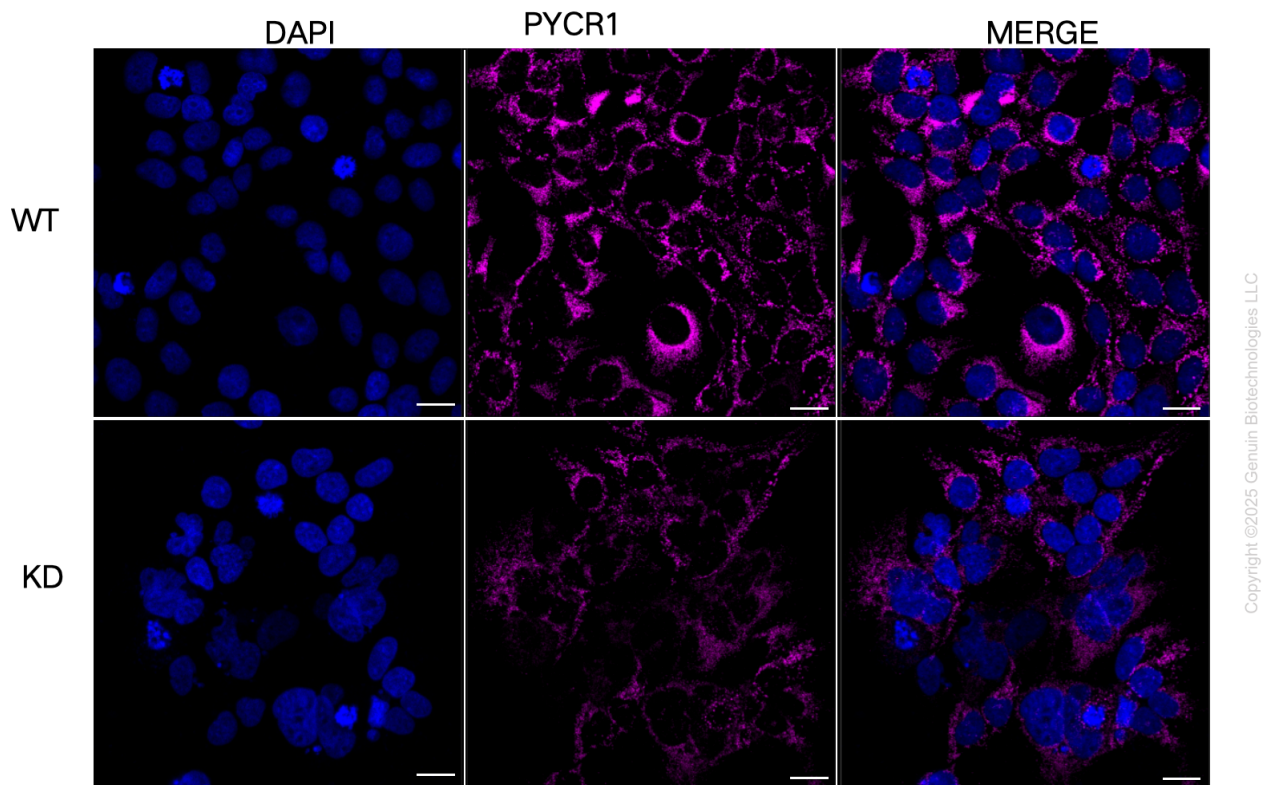


Western blotting analysis using anti-PYCR1 antibody (Cat#65934). Total cell lysates (30 µg) from various cell lines were loaded and separated by SDS-PAGE. The blot was incubated with anti-PYCR1 antibody (Cat#65934, 1:2,500) and HRP-conjugated goat anti-mouse secondary antibody (Cat#101, 1:20,000) respectively. Image was developed using NaQ™ ECL Substrate Kit (Cat#716).



Copyright ©2025 Genuin Biotechnologies LLC

Validation of PYCR1 knockdown using flow cytometry. Wild-type(WT, Blue) and knockdown(KD, Green) HeLa cells were stained with anti-PYCR1 antibody (Cat#65934, 1:2,000) and analyzed using BD flow cytometer.



Immunocytochemical staining of HeLa cells using anti-PYCR1 antibody (Cat#65934, 1:1,000), Top panel: wild-type (WT); Bottom panel: PYCR1 shRNA knockdown (KD). Nuclei were stained blue with DAPI; PYCR1 was stained magenta with Alexa Fluor® 647. Scale bar, 20 μ m.