

KD-Validated Anti-M6PR Mouse Monoclonal Antibody



Catalog #: 65936

Aliases

M6PR; Mannose-6-Phosphate Receptor, Cation Dependent; CD-MPR; CD-M6PR; Cation-Dependent Mannose-6-Phosphate Receptor; CD Man-6-P Receptor; MPR 46; MPR46; Mannose-6-Phosphate Receptor (Cation Dependent); 46-KDa Mannose 6-Phosphate Receptor; 46 KDa Mannose 6-Phosphate Receptor; Small Mannose 6-Phosphate Receptor; Mr 46,000 Man6PR; MPR-46; SMPR; MPRD

Background

NCBI Gene Entry: [4074](#)

UniProt Entry: [P20645](#)

Application Information

Molecular Weight: Predicted, 31 kDa; observed, 37 kDa

Clonality: Mouse monoclonal antibody

Clone ID: 25GB5915

Species Reactivity: Human

Applications Tested: Western blotting (WB), flow cytometry (FCM)

Immunogen

Recombinant protein of human M6PR

Isotype

Mouse IgG1

Storage Buffer

Supplied in PBS (pH 7.4) containing 50% glycerol, and 0.02% sodium azide.

Storage

Store at -20 °C for one year.

Recommended Dilutions

Western Blotting (WB): 1:200-1:1,000

Flow Cytometry (FCM): 1:200-1:2,000

Note: This product is for research use only.

SUPPORT

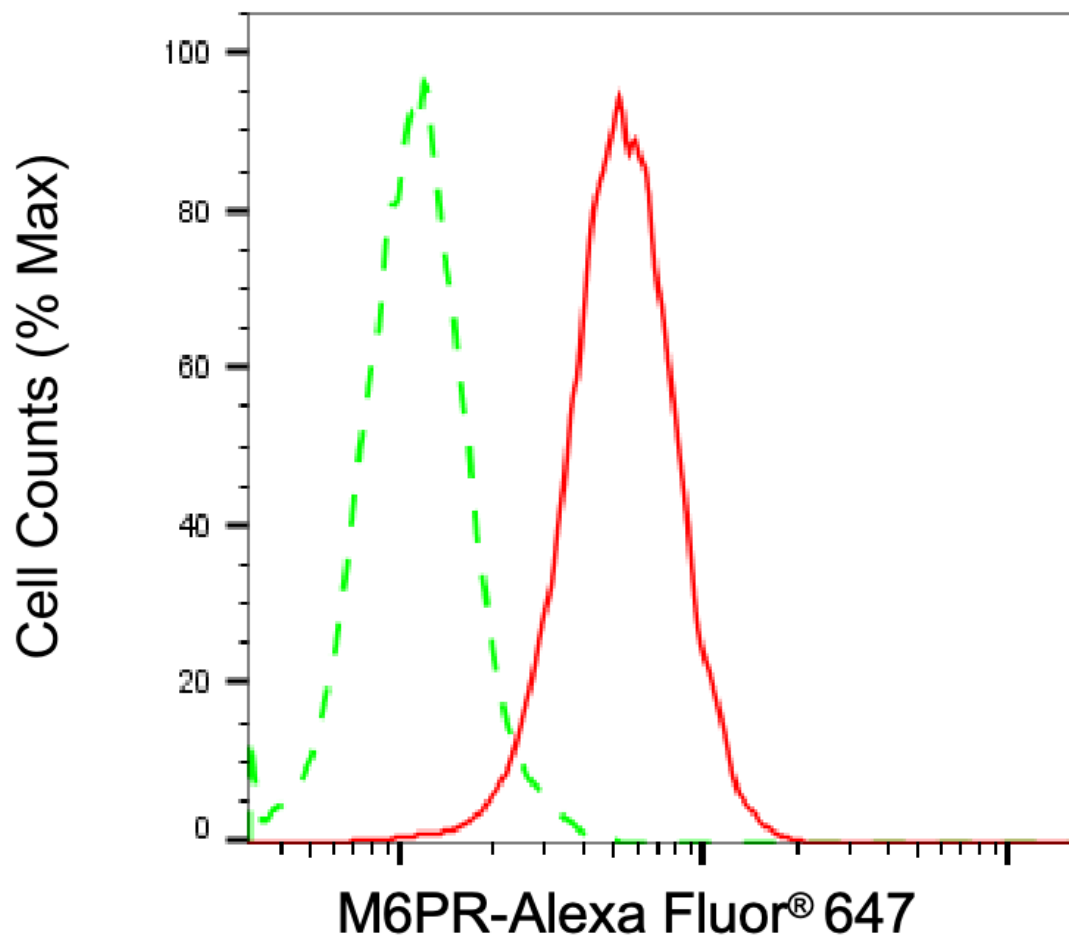
SUPPORT@GENUINBIOTECH.COM
TEL: +1-540-855-7041

ORDERS

SALES@GENUINBIOTECH.COM
FAX: +1-540-855-7041

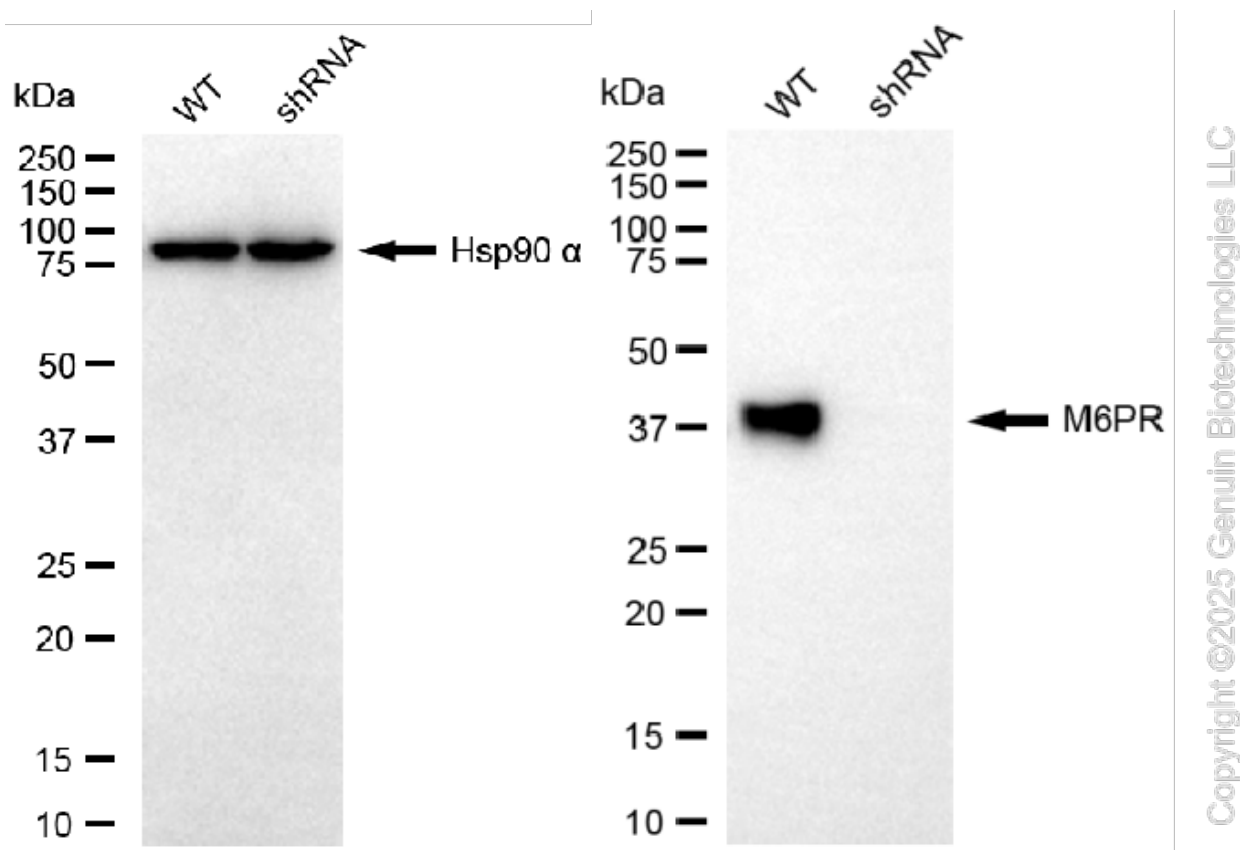
WWW.GENUINBIOTECH.COM

Validation Data

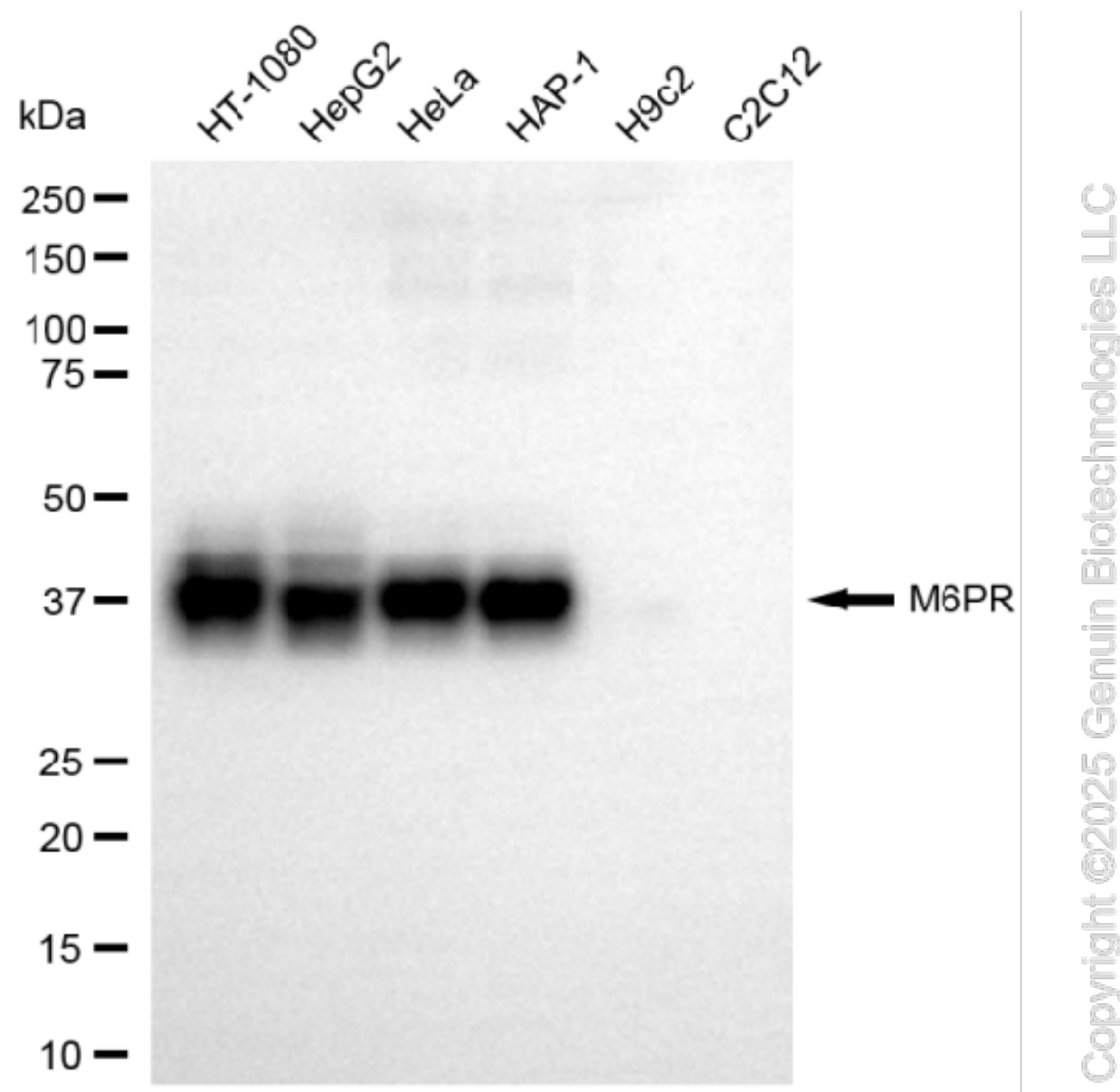


Copyright ©2025 Genuin Biotechnologies LLC

Flow cytometric analysis of M6PR expression in HAP-1 cells using anti-M6PR antibody (Cat#65936, 1:2,000). Green, isotype control; red, M6PR.



Western blotting analysis using anti-M6PR antibody (Cat#65936). M6PR expression in wild-type (WT) and M6PR shRNA knockdown (KD) HeLa cells with 20 µg of total cell lysates. Hsp90 α serves as a loading control. The blot was incubated with anti-M6PR antibody (Cat#65936, 1:1,000) and HRP-conjugated goat anti-mouse secondary antibody (Cat#101, 1:20,000) respectively. Image was developed using NaQ™ ECL Substrate Kit (Cat#716).



Western blotting analysis using anti-M6PR antibody (Cat#65936). Total cell lysates (30 μ g) from various cell lines were loaded and separated by SDS-PAGE. The blot was incubated with anti-M6PR antibody (Cat#65936, 1:1,000) and HRP-conjugated goat anti-mouse secondary antibody (Cat#101, 1:20,000) respectively. Image was developed using FeQ™ ECL Substrate Kit (Cat#226).