

KD-Validated Anti-PCCA Mouse Monoclonal Antibody



Catalog #: 66110

Aliases

PCCA; Propionyl-CoA Carboxylase Subunit Alpha; Propionyl-CoA Carboxylase Alpha Chain, Mitochondrial; Propionyl Coenzyme A Carboxylase, Alpha Polypeptide; EC 6.4.1.3; Propanoyl-CoA:Carbon Dioxide Ligase Alpha Subunit; Propanoyl-CoA:Carbon Dioxide Ligase Subunit Alpha; Propionyl CoA Carboxylase, Alpha Polypeptide; Propionyl-CoA Carboxylase Alpha Subunit; PccA Complementation Group; PCCase Alpha Subunit; PCCase Subunit Alpha; EC 6.4.1

Background

NCBI Gene Entry: [5095](#)

UniProt Entry: [P05165](#)

Application Information

Molecular Weight: Predicted, 80 kDa; observed, 70 kDa

Clonality: Mouse monoclonal antibody

Clone ID: 25GB6905

Species Reactivity: Human, mouse, rat

Applications Tested: Western blotting (WB), immunocytochemistry (IC)

Immunogen

Recombinant protein of human PCCA

Isotype

Mouse IgG1

Storage Buffer

Supplied in PBS (pH 7.4) containing 50% glycerol, and 0.02% sodium azide.

Storage

Store at -20 °C for one year.

Recommended Dilutions

Western Blotting (WB): 1:500-1:2,500

Immunocytochemistry (IC): 1:100-1:1,000

Note: This product is for research use only.

SUPPORT

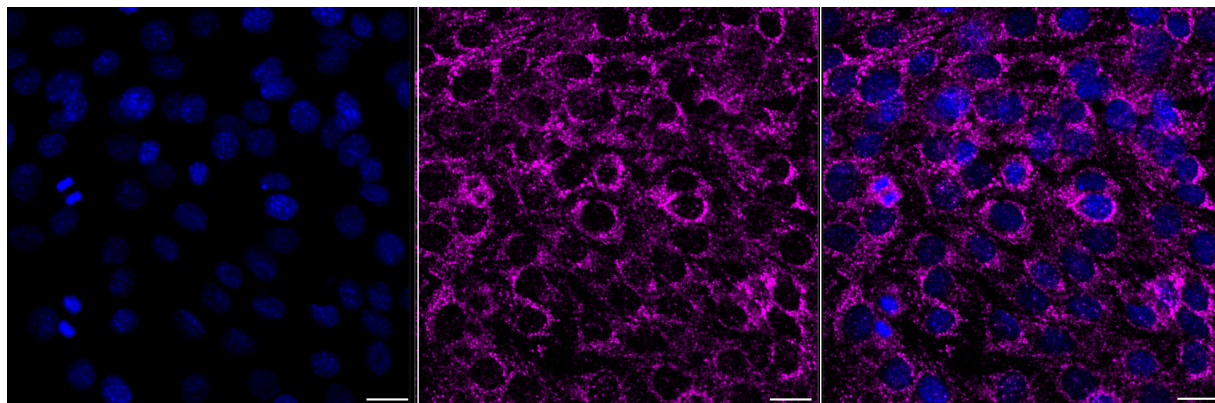
SUPPORT@GENUINBIOTECH.COM
TEL: +1-540-855-7041

ORDERS

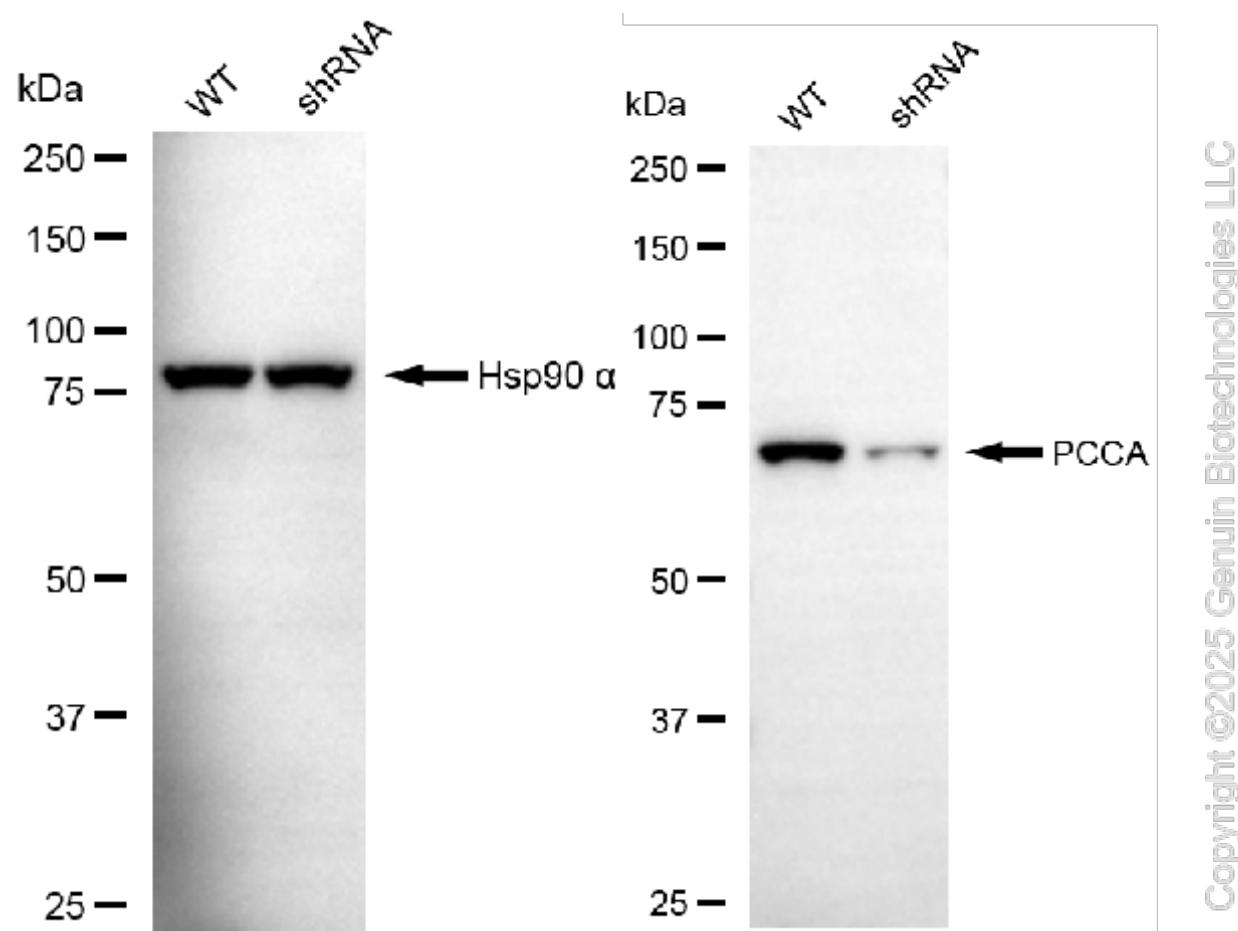
SALES@GENUINBIOTECH.COM
FAX: +1-540-855-7041

WWW.GENUINBIOTECH.COM

Validation Data



Immunocytochemical staining of C2C12 cells with anti-PCCA antibody (Cat#66110, 1:1,000) . Nuclei were stained blue with DAPI; PCCA was stained magenta with Alexa Fluor® 647. Images were taken using Leica stellaris 5. Protein abundance based on laser Intensity and smart gain: Medium. Scale bar, 20 μ m.

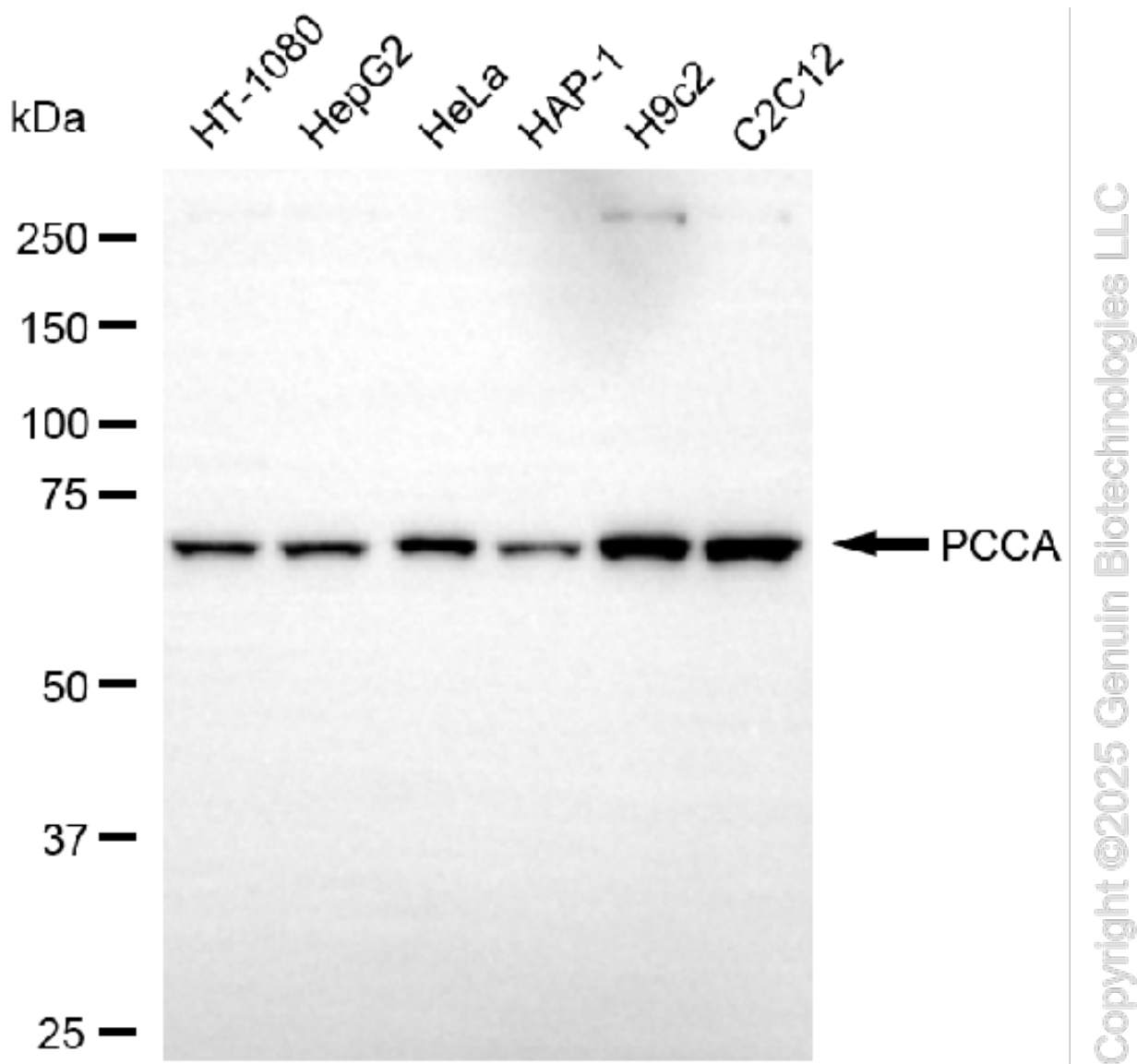


Western blotting analysis using anti-PCCA antibody (Cat#66110). PCCA expression in wild-type (WT) and PCCA shRNA knockdown (KD) HeLa cells with 30 μ g of total cell lysates. Hsp90 α

KD-Validated Anti-PCCA Mouse Monoclonal Antibody

PAGE 3

serves as a loading control. The blot was incubated with anti-PCCA antibody (Cat#66110, 1:2,500) and HRP-conjugated goat anti-mouse secondary antibody (Cat#101, 1:20,000) respectively. Image was developed using FeQ™ ECL Substrate Kit (Cat#226).



Western blotting analysis using anti-PCCA antibody (Cat#66110). Total cell lysates (30 µg) from various cell lines were loaded and separated by SDS-PAGE. The blot was incubated with anti-PCCA antibody (Cat#66110, 1:2,500) and HRP-conjugated goat anti-mouse secondary antibody (Cat#101, 1:20,000) respectively. Image was developed using FeQ™ ECL Substrate Kit (Cat#226).

SUPPORT

SUPPORT@GENUINBIOTECH.COM
TEL: +1-540-855-7041

ORDERS

SALES@GENUINBIOTECH.COM
FAX: +1-540-855-7041

WWW.GENUINBIOTECH.COM