

KD-Validated Anti-Integrin β 1/CD29 Recombinant Rabbit Monoclonal Antibody



Catalog #: 66731

Aliases

GPIIA; MSK12; CD29; FNRB; MDF2; Integrin, Beta 1 (Fibronectin Receptor, Beta Polypeptide, Antigen CD29 Includes MDF2, MSK12); Glycoprotein IIa; Integrin Beta-1; Very Late Activation Protein, Beta Polypeptide; Fibronectin Receptor Subunit Beta; Integrin VLA-4 Beta Subunit; VLA-4 Subunit Beta; Integrin Beta 1; CD29 Antigen; VLA-BETA; VLAB

Background

Gene Name: ITGB1/CD29

NCBI Gene Entry: [3688](#)

UniProt Entry: [P05556](#)

Application Information

Molecular Weight: Predicted, 88 kDa, observed, 115/135 kDa

Clonality: Rabbit monoclonal antibody

Clone ID: 23GB885

Species Reactivity: Human

Applications Tested: Western blotting (WB), flow cytometry (FCM), immunocytochemistry (IC)

Immunogen

A synthesized peptide derived from human integrin beta-1/CD29

Isotype

Rabbit IgG

Storage Buffer

Supplied in PBS (pH 7.4) containing 50% glycerol, and 0.02% sodium azide.

Storage

Store at -20 °C for one year.

Recommended Dilutions

Western Blotting (WB): 1:1,000-1:5,000

Flow Cytometry (FCM): 1:2,000

Immunocytochemistry (IC): 1:100-1:1,000

SUPPORT

SUPPORT@GENUINBIOTECH.COM
TEL: +1-540-855-7041

ORDERS

SALES@GENUINBIOTECH.COM
FAX: +1-540-855-7041

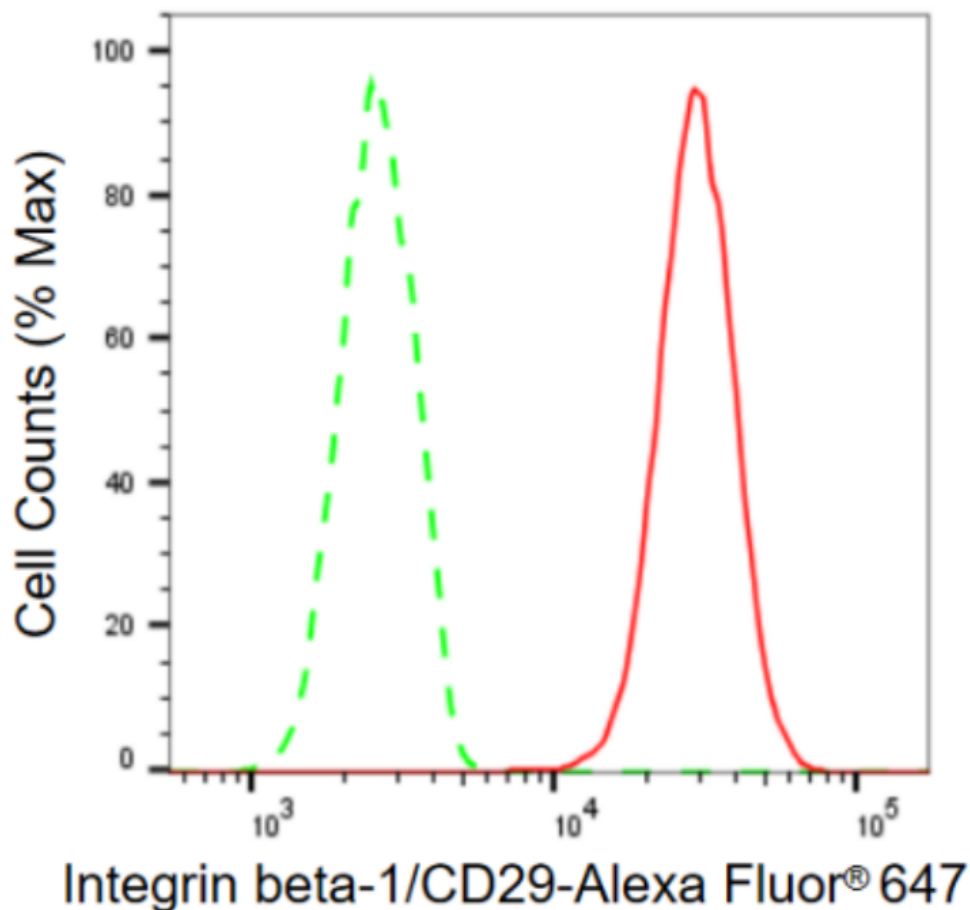
WWW.GENUINBIOTECH.COM

KD-Validated Anti-Integrin β 1/CD29 Recombinant Rabbit Monoclonal Antibody

PAGE 2

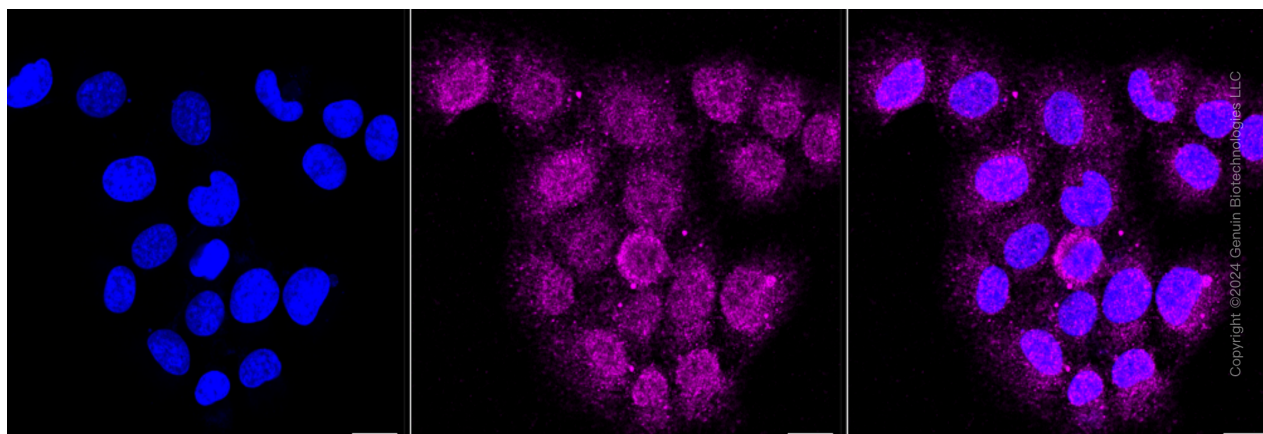
Note: This product is for research use only.

Validation Data



Copyright ©2024 Genuin Biotechnologies LLC

Flow cytometric analysis of Integrin beta-1/CD29 expression in HT-1080 cells using Integrin beta-1/CD29 antibody (Cat#66731,1:2,000). Green, isotype control; red, Integrin beta-1/CD29.



Immunocytochemical staining of HT-1080 cells with Integrin beta-1/CD29 antibody (Cat#66731,

SUPPORT

SUPPORT@GENUINBIOTECH.COM
TEL: +1-540-855-7041

ORDERS

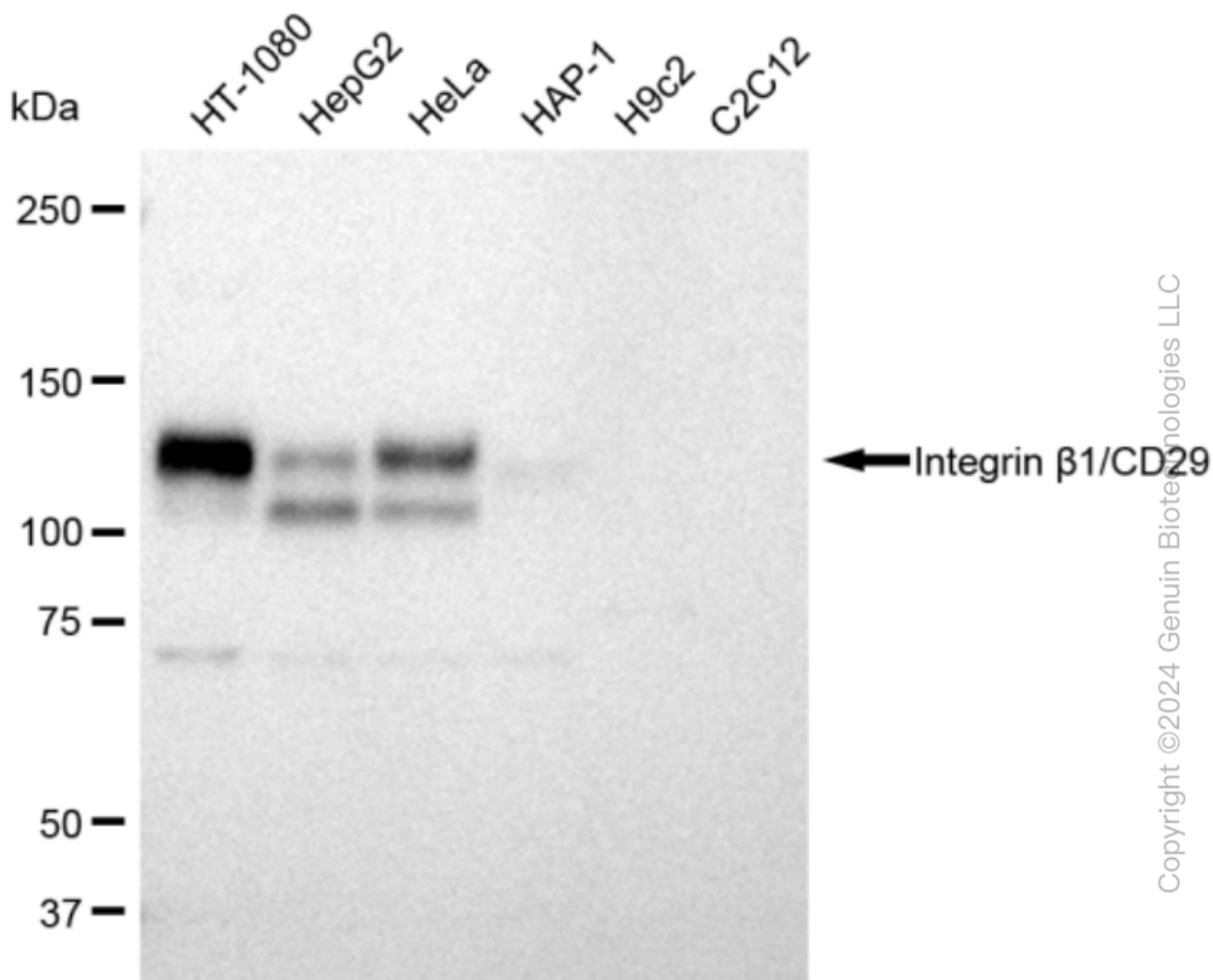
SALES@GENUINBIOTECH.COM
FAX: +1-540-855-7041

WWW.GENUINBIOTECH.COM

KD-Validated Anti-Integrin β 1/CD29 Recombinant Rabbit Monoclonal Antibody

PAGE 3

1:1,000). Nuclei were stained blue with DAPI; Integrin beta-1/CD29 was stained magenta with Alexa Fluor® 647. Images were taken using Leica stellaris 5. Protein abundance based on laser Intensity and smart gain: Medium. Scale bar: 20 μ m.



Western blotting analysis using anti-Integrin β 1/CD29 antibody (Cat#66731). Total cell lysates (30 μ g) from various cell lines were loaded and separated by SDS-PAGE. The blot was incubated with anti-Integrin β 1/CD29 antibody (Cat#66731, 1:5,000) and HRP-conjugated goat anti rabbit secondary antibody (Cat#201, 1:20,000) respectively. Image was developed using FeQ™ ECL Substrate Kit (Cat#226).

SUPPORT

SUPPORT@GENUINBIOTECH.COM
TEL: +1-540-855-7041

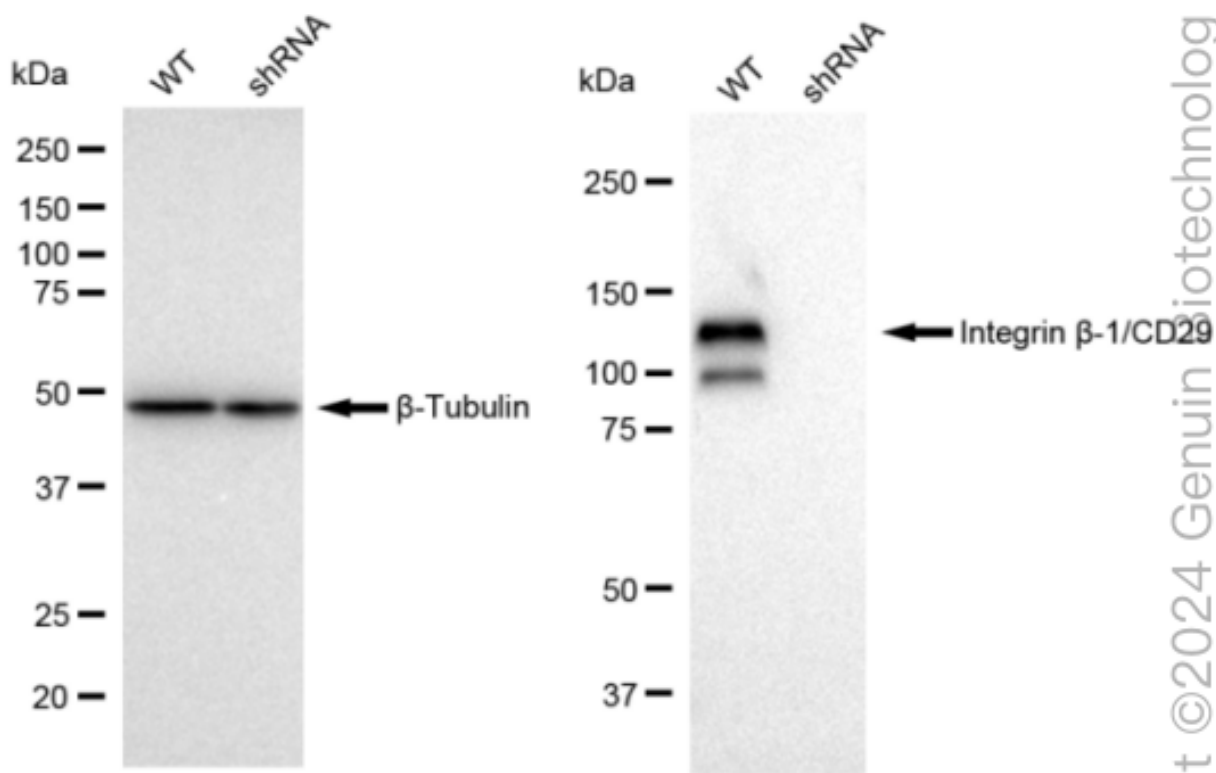
ORDERS

SALES@GENUINBIOTECH.COM
FAX: +1-540-855-7041

WWW.GENUINBIOTECH.COM

KD-Validated Anti-Integrin β 1/CD29 Recombinant Rabbit Monoclonal Antibody

PAGE 4



Western blotting analysis using anti-Integrin beta-1/CD29 antibody (Cat#66731). Integrin beta-1/CD29 expression in wild type (WT) and Integrin beta-1/CD29 shRNA knockdown (KD) HeLa cells with 30 μ g of total cell lysates. β -Tubulin serves as a loading control. The blot was incubated with anti-Integrin beta-1/CD29 antibody (Cat#66731, 1:5,000) and HRP-conjugated goat anti rabbit secondary antibody (Cat#201, 1:50,000) respectively. Image was developed using FeQ™ ECL Substrate Kit (Cat#226).

SUPPORT

SUPPORT@GENUINBIOTECH.COM
TEL: +1-540-855-7041

ORDERS

SALES@GENUINBIOTECH.COM
FAX: +1-540-855-7041

WWW.GENUINBIOTECH.COM