

KD-Validated Anti-Cyclin A2 Recombinant Rabbit Monoclonal Antibody



Catalog #: 67151

Aliases

CCNA2; Cyclin A2; CCN1; CCNA; Cyclin-A2; Cyclin-A; Cyclin A

Background

Gene Name: CCNA2

NCBI Gene Entry: [890](#)

UniProt Entry: [P20248](#)

Application Information

Molecular Weight: Predicted, 49 kDa, observed, 50 kDa

Clonality: Rabbit monoclonal antibody

Clone ID: 23GB1875

Species Reactivity: Human, mouse, rat

Applications Tested: Western blotting (WB), flow cytometry (FCM), immunocytochemistry (IC), Immunohistochemistry (IHC)

Immunogen

A synthesized peptide derived from human Cyclin A2

Isotype

Rabbit IgG

Storage Buffer

Supplied in PBS (pH 7.4) containing 50% glycerol, and 0.02% sodium azide.

Storage

Store at -20 °C for one year.

Recommended Dilutions

Western Blotting (WB): 1:1,000-1:5,000

Flow Cytometry (FCM): 1:2,000

Immunocytochemistry (IC): 1:100-1:1,000

Immunohistochemistry (IHC): 1:100-1:200

Note: This product is for research use only.

SUPPORT

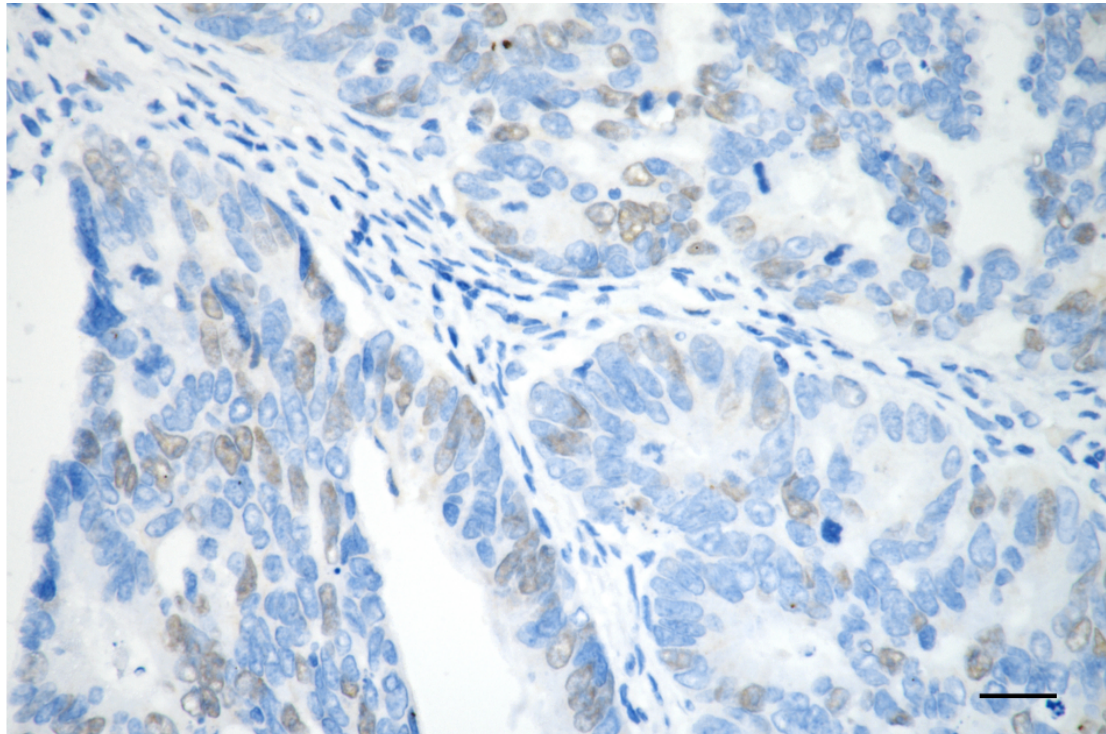
SUPPORT@GENUINBIOTECH.COM
TEL: +1-540-855-7041

ORDERS

SALES@GENUINBIOTECH.COM
FAX: +1-540-855-7041

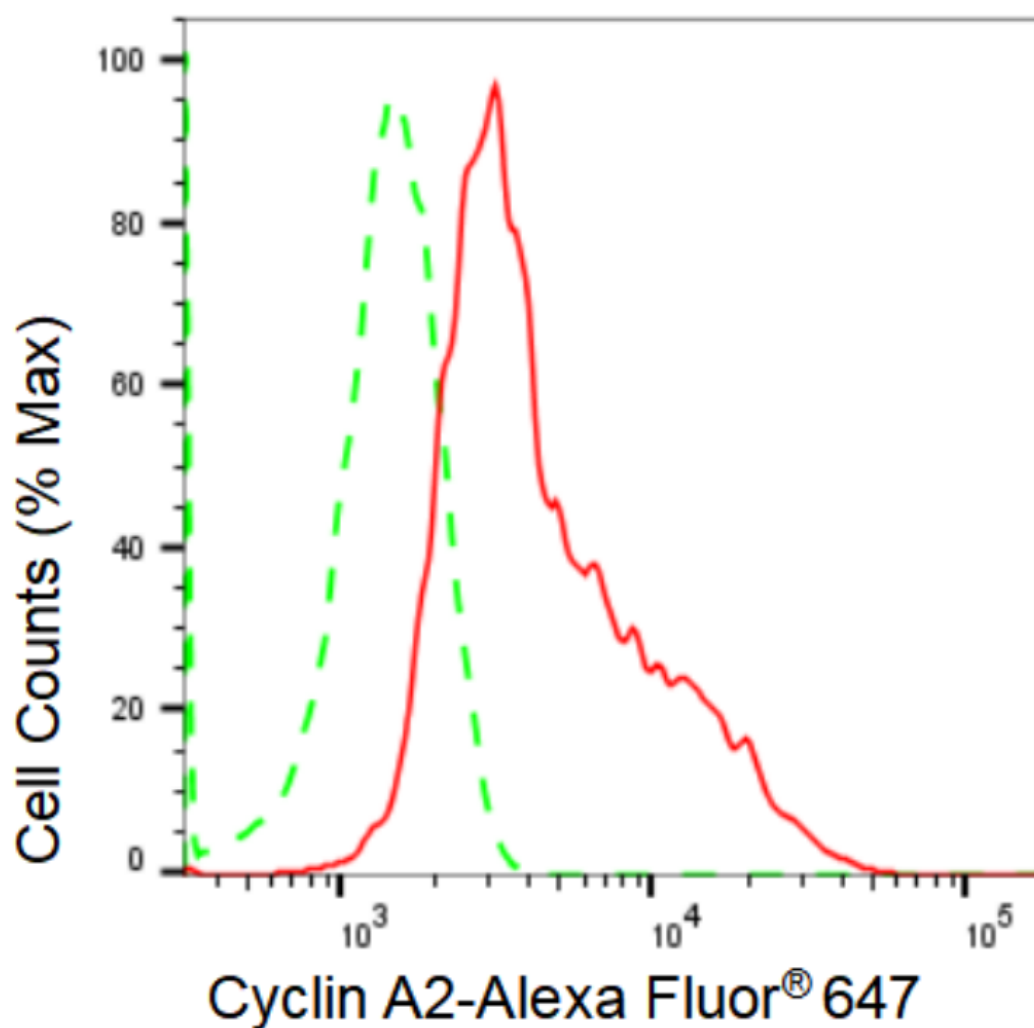
WWW.GENUINBIOTECH.COM

Validation Data



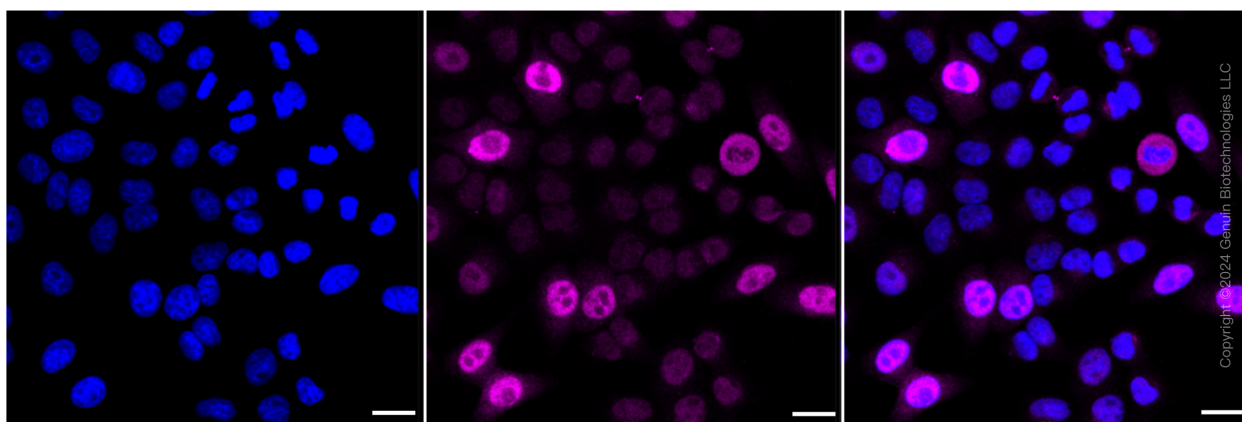
Copyright ©2025 Genuin Biotechnologies LLC

Immunohistochemistry was performed on paraffin-embedded human sigmoid colon carcinoma using anti-cyclin A2 antibody (Cat#67151, 1:200). Antigen retrieval was done in sodium citrate buffer (pH 6.0). DAB was used for detection, with hematoxylin counterstaining. Images were acquired using a Nikon Ci-L Plus microscope (40× objective). Scale bar: 25 μ m.



Copyright ©2024 Genuin Biotechnologies LLC

Flow cytometric analysis of Cyclin A2 expression in HepG2 cells using Cyclin A2 antibody (Cat#67151, 1:2,000). Green, isotype control; red, Cyclin A2.

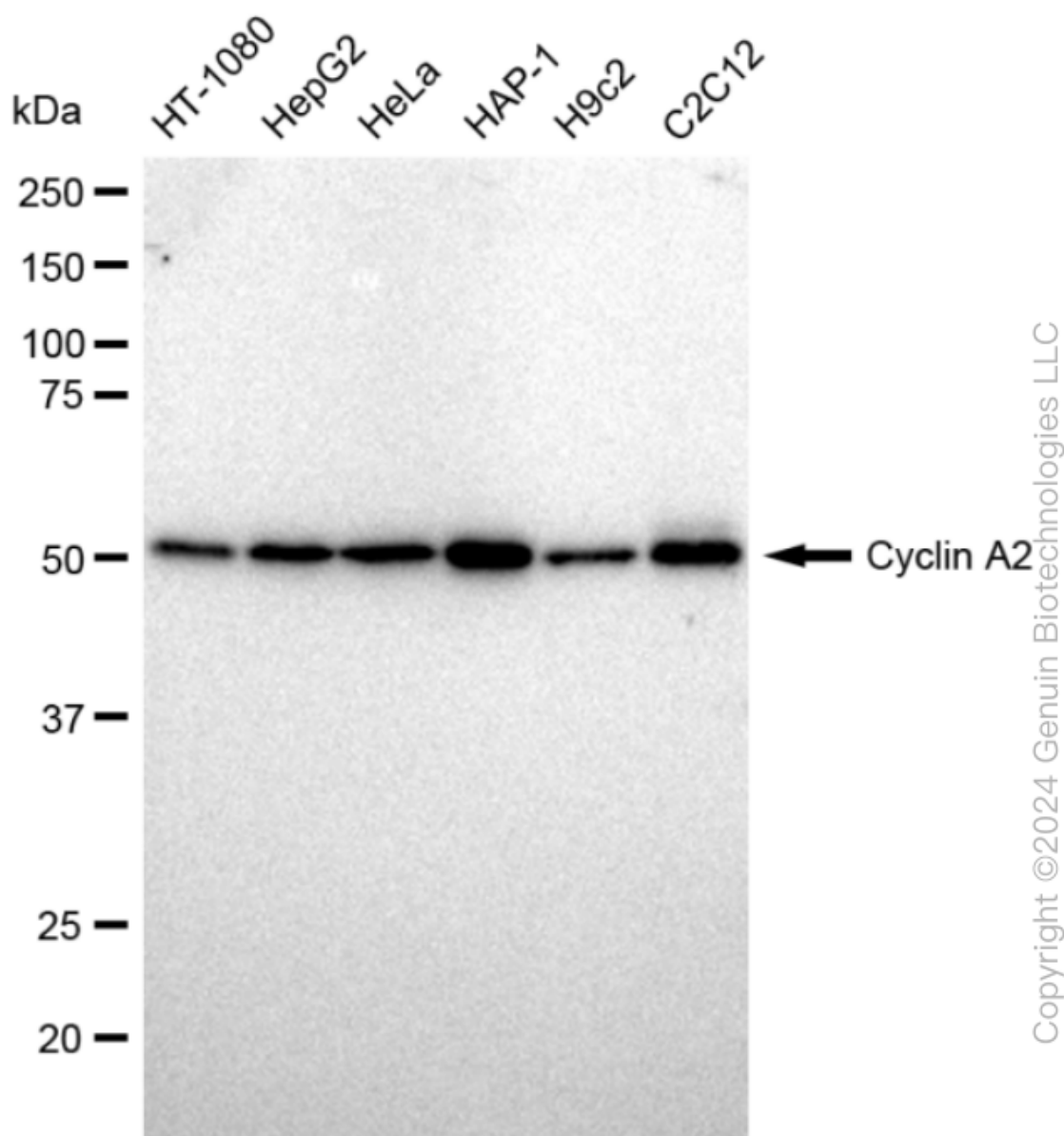


Copyright ©2024 Genuin Biotechnologies LLC

KD-Validated Anti-Cyclin A2 Recombinant Rabbit Monoclonal Antibody

PAGE 4

Images were taken using Leica stellaris 5. Protein abundance based on laser Intensity and smart gain: High. Scale bar: 20 μ m.



Western blotting analysis using anti-Cyclin A2 antibody (Cat#67151). Total cell lysates (30 μ g) from various cell lines were loaded and separated by SDS-PAGE. The blot was incubated with anti-Cyclin A2 antibody (Cat#67151, 1:5,000) and HRP-conjugated goat anti-rabbit secondary antibody (Cat#201, 1:20,000) respectively. Image was developed using FeQ™ ECL Substrate Kit (Cat#226).

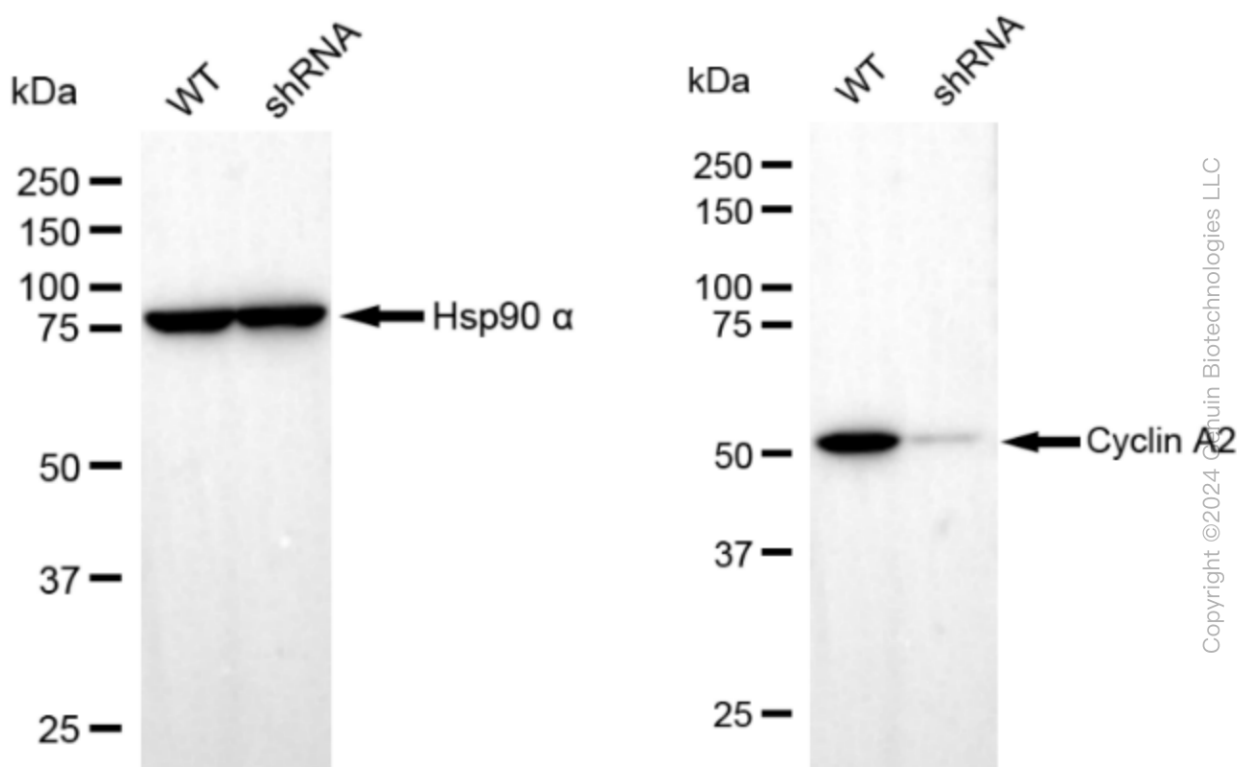
SUPPORT

SUPPORT@GENUINBIOTECH.COM
TEL: +1-540-855-7041

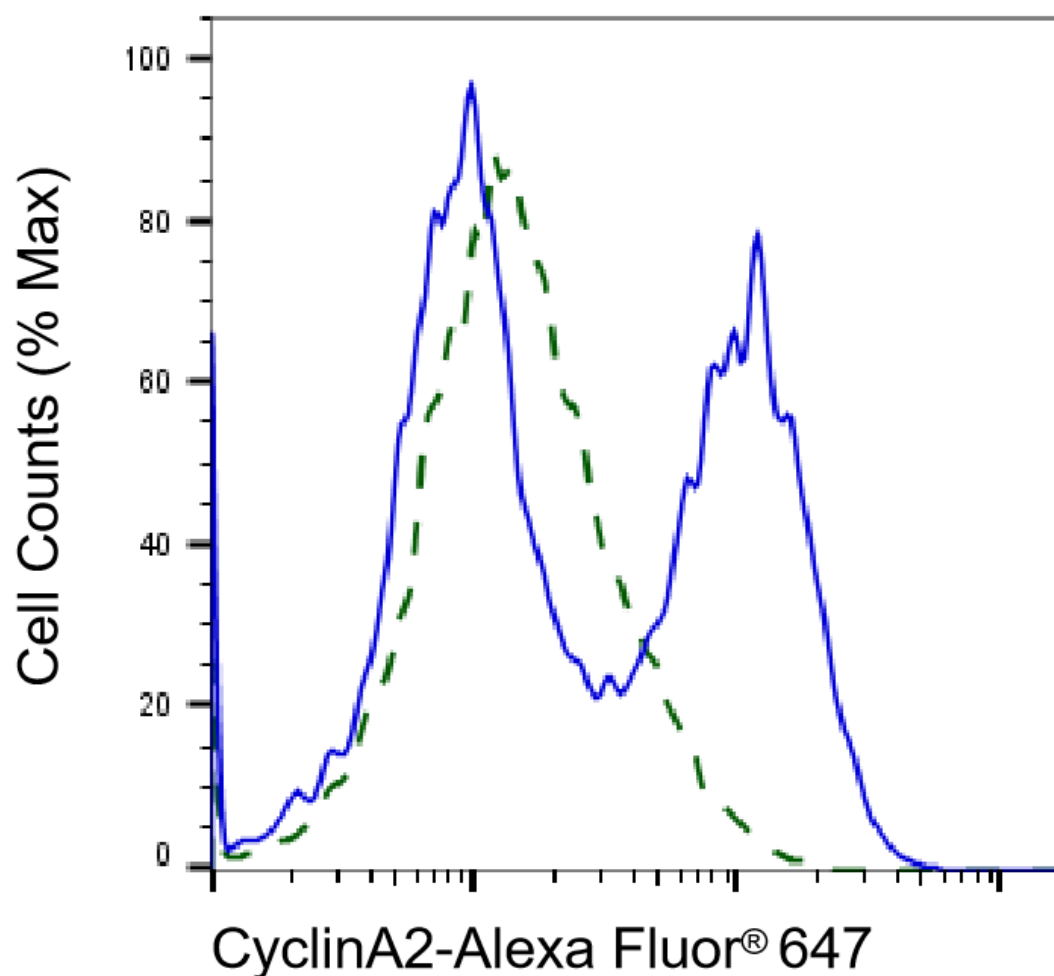
ORDERS

SALES@GENUINBIOTECH.COM
FAX: +1-540-855-7041

WWW.GENUINBIOTECH.COM

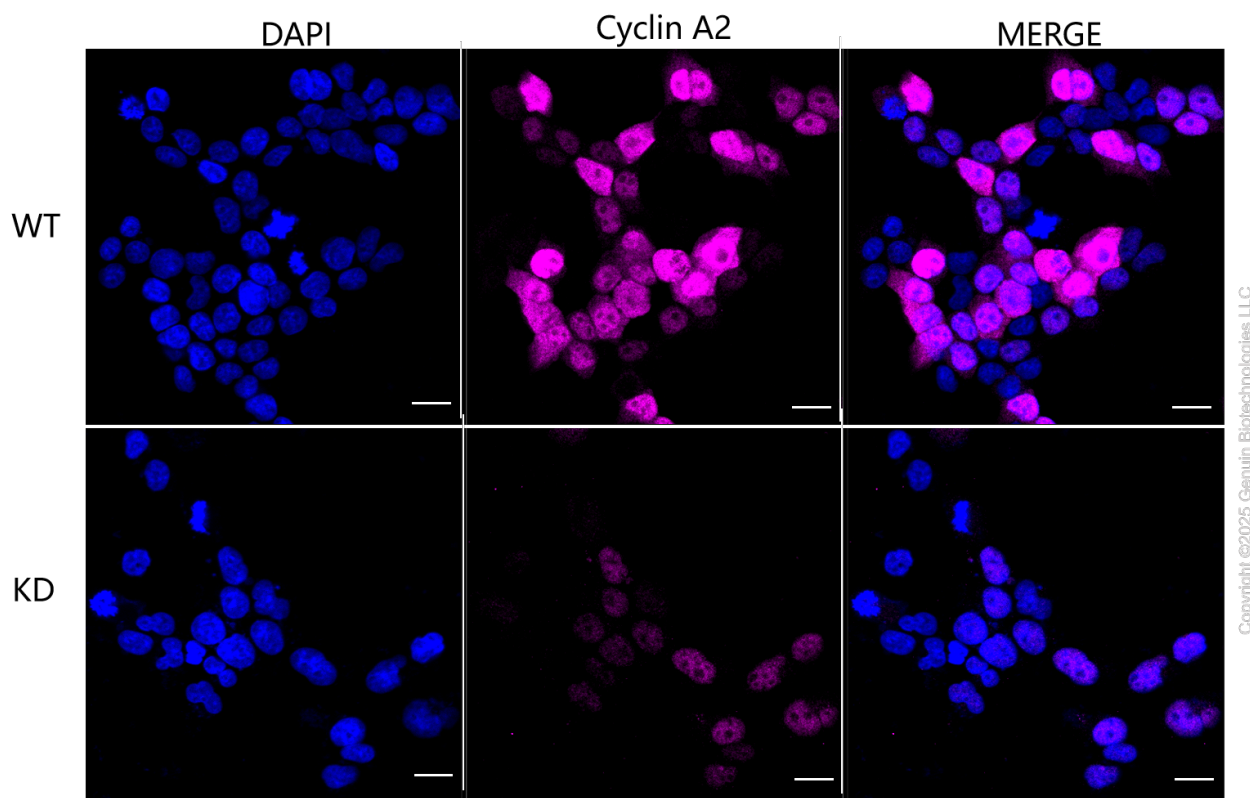


Western blotting analysis using anti-Cyclin A2 antibody (Cat#67151). Cyclin A2 expression in wild type (WT) and Cyclin A2 shRNA knockdown (KD) HeLa cells with 30 µg of total cell lysates. Hsp90 α serves as a loading control. The blot was incubated with anti-Cyclin A2 antibody (Cat#67151, 1:5,000) and HRP-conjugated goat anti-rabbit secondary antibody (Cat#201, 1:20,000) respectively. Image was developed using FeQ™ ECL Substrate Kit (Cat#226).



Copyright ©2025 Genuin Biotechnologies LLC

Validation of CyclinA2 knockdown using flow cytometry. Wild-type(WT, Blue) and knockdown(KD, Green) HeLa cells were stained with anti-CyclinA2 antibody (Cat#67151, 1:2,000) and analyzed using BD flow cytometer.



Immunocytochemical staining of HeLa cells using anti-Cyclin A2 antibody (Cat#67151, 1:1,000), Top panel: wild-type (WT); Bottom panel: Cyclin A2 shRNA knockdown (KD). Nuclei were stained blue with DAPI; Cyclin A2 was stained magenta with Alexa Fluor® 647. Scale bar, 20 μ m. Permeabilization: Triton.