

KD-Validated Anti-MCM7 Recombinant Rabbit Monoclonal Antibody



Catalog #: 67157

Aliases

Minichromosome Maintenance Complex Component 7; CDC47; PPP1R104; MCM2; Protein Phosphatase 1, Regulatory Subunit 104; DNA Replication Licensing Factor MCM7; CDC47 Homolog; P1.1-MCM3; MCM7 Minichromosome Maintenance Deficient 7 (S. Cerevisiae); Minichromosome Maintenance Deficient (S. Cerevisiae) 7; Minichromosome Maintenance Deficient 7; Homolog Of S. Cerevisiae Cdc47; EC 3.6.4.12; P1CDC47; PNAS146; P85MCM

Background

Gene Name: MCM7

NCBI Gene Entry: [4176](#)

UniProt Entry: [P33993](#)

Application Information

Molecular Weight: Predicted, 81 kDa, observed, 81 kDa

Clonality: Rabbit monoclonal antibody

Clone ID: 23GB930

Species Reactivity: Human, rat

Applications Tested: Western blotting (WB), flow cytometry (FCM), immunocytochemistry (IC)

Immunogen

A synthesized peptide derived from human MCM7

Isotype

Rabbit IgG

Storage Buffer

Supplied in PBS (pH 7.4) containing 50% glycerol, and 0.02% sodium azide.

Storage

Store at -20 °C for one year.

Recommended Dilutions

Western Blotting (WB): 1:1,000-1:5,000

Flow Cytometry (FCM): 1:2,000

Immunocytochemistry (IC): 1:100-1:1,000

SUPPORT

SUPPORT@GENUINBIOTECH.COM
TEL: +1-540-855-7041

ORDERS

SALES@GENUINBIOTECH.COM
FAX: +1-540-855-7041

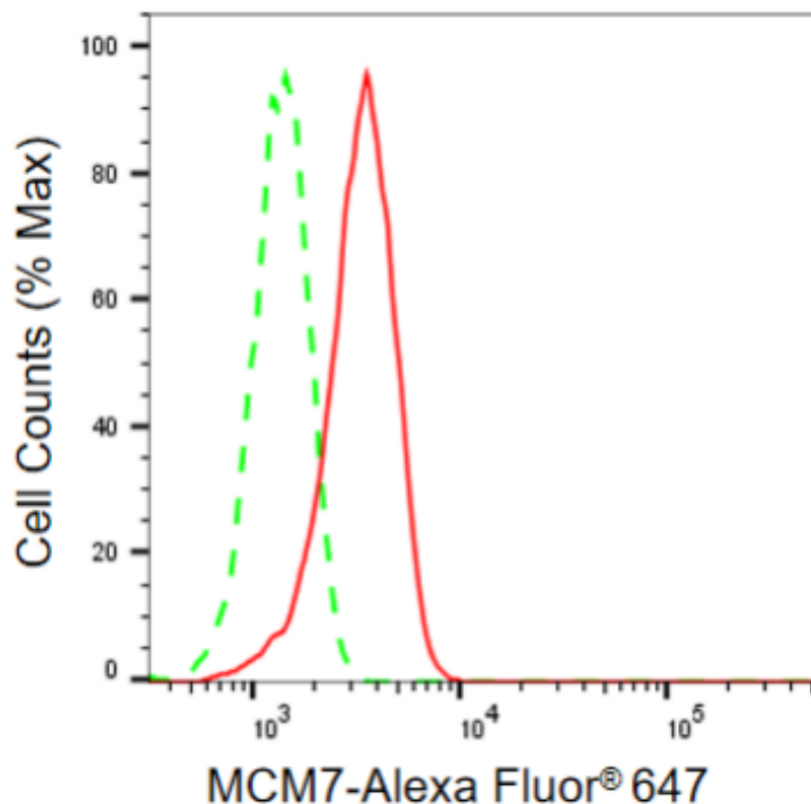
WWW.GENUINBIOTECH.COM

KD-Validated Anti-MCM7 Recombinant Rabbit Monoclonal Antibody

PAGE 2

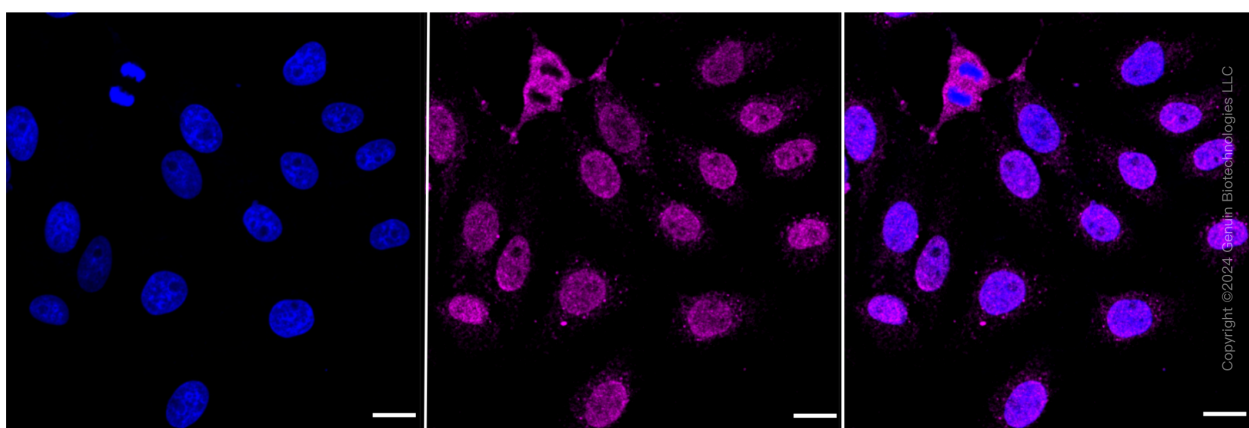
Note: This product is for research use only.

Validation Data



Copyright ©2024 Genuin Biotechnologies LLC

Flow cytometric analysis of MCM7 expression in HepG2 cells using MCM7 antibody (Cat#67157, 1:2,000). Green, isotype control; red, MCM7.



Copyright ©2024 Genuin Biotechnologies LLC

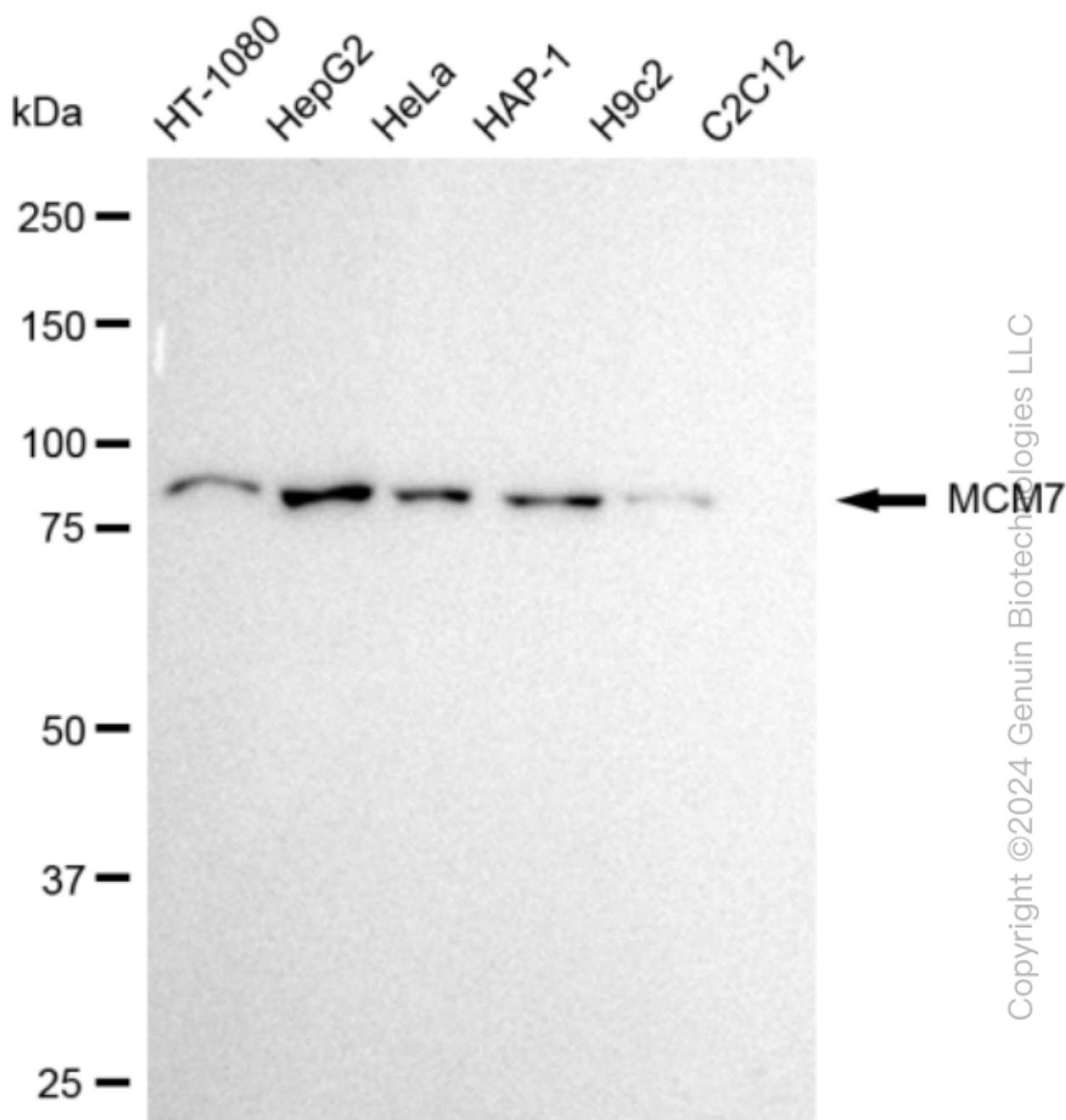
SUPPORT

SUPPORT@GENUINBIOTECH.COM
TEL: +1-540-855-7041

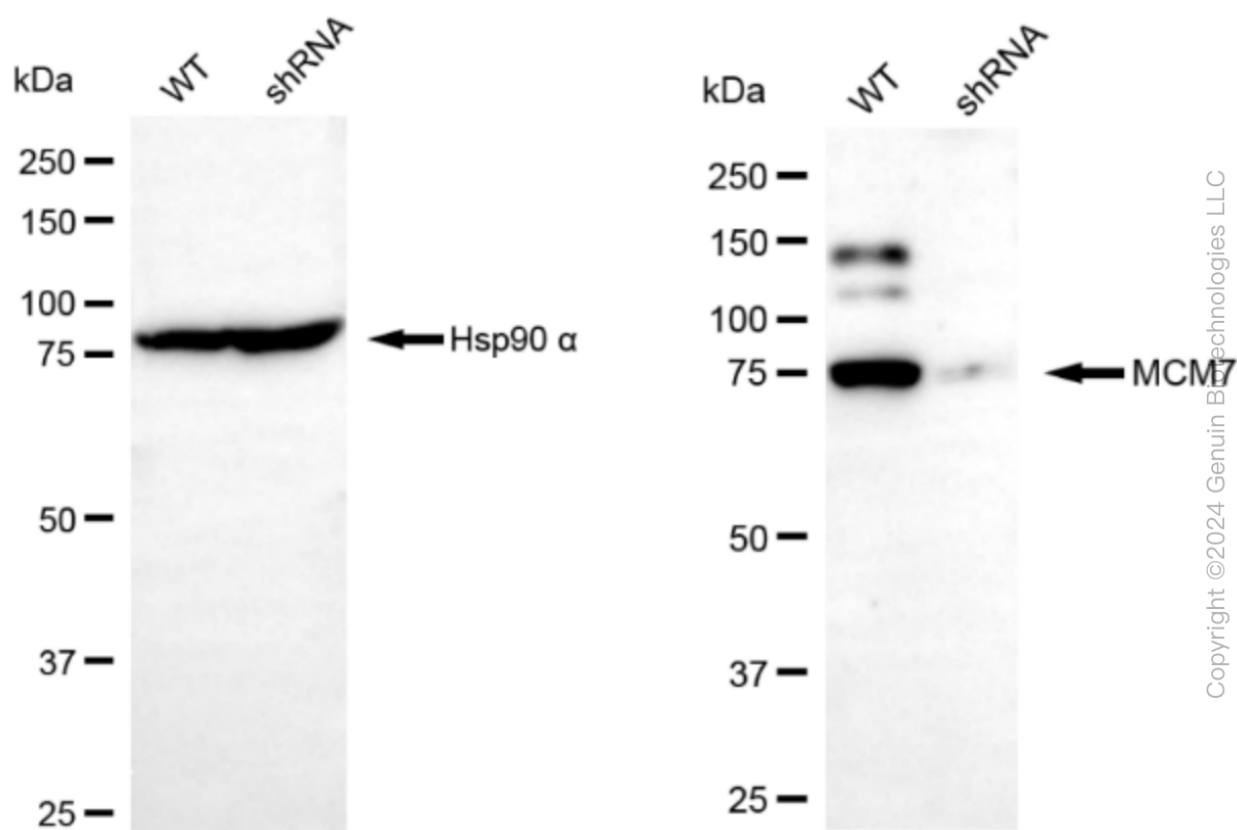
ORDERS

SALES@GENUINBIOTECH.COM
FAX: +1-540-855-7041

WWW.GENUINBIOTECH.COM



Western blotting analysis using anti-MCM7 antibody (Cat#67157). Total cell lysates (30 μ g) from various cell lines were loaded and separated by SDS-PAGE. The blot was incubated with anti-MCM7 antibody (Cat#67157, 1:5,000) and HRP-conjugated goat anti-rabbit secondary antibody (Cat#201, 1:50,000) respectively. Image was developed using FeQ™ ECL Substrate Kit (Cat#226).



Western blotting analysis using anti-MCM7 antibody (Cat#67157). MCM7 expression in wild type (WT) and MCM7 shRNA knockdown (KD) HT-1080 cells with 30 μ g of total cell lysates. GAPDH serves as a loading control. The blot was incubated with anti-MCM7 antibody (Cat#67157, 1:5,000) and HRP-conjugated goat anti-rabbit secondary antibody (Cat#201, 1:50,000) respectively. Image was developed using FeQ™ ECL Substrate Kit (Cat#226).