

KD-Validated Anti-Cdk4 Recombinant Rabbit Monoclonal Antibody



Catalog #: 67244

Aliases

CDK4; Cyclin Dependent Kinase 4; PSK-J3; Cell Division Protein Kinase 4; Cyclin-Dependent Kinase 4; EC 2.7.11.22; EC 2.7.11; CMM3

Background

Gene Name: CDK4

NCBI Gene Entry: [1019](#)

UniProt Entry: [P11802](#)

Application Information

Molecular Weight: Predicted, 34 kDa, observed, 30 kDa

Clonality: Rabbit monoclonal antibody

Clone ID: 23GB745

Species Reactivity: Human

Applications Tested: Western blotting (WB), flow cytometry (FCM), immunocytochemistry (IC)

Immunogen

A synthesized peptide derived from human Cdk4

Isotype

Rabbit IgG

Storage Buffer

Supplied in PBS (pH 7.4) containing 50% glycerol, and 0.02% sodium azide.

Storage

Store at -20 °C for one year.

Recommended Dilutions

Western Blotting (WB): 1:1,000-1:5,000

Immunocytochemistry (IC): 1:100-1:1,000

Flow Cytometry (FCM): 1:2,000

Note: This product is for research use only.

Validation Data

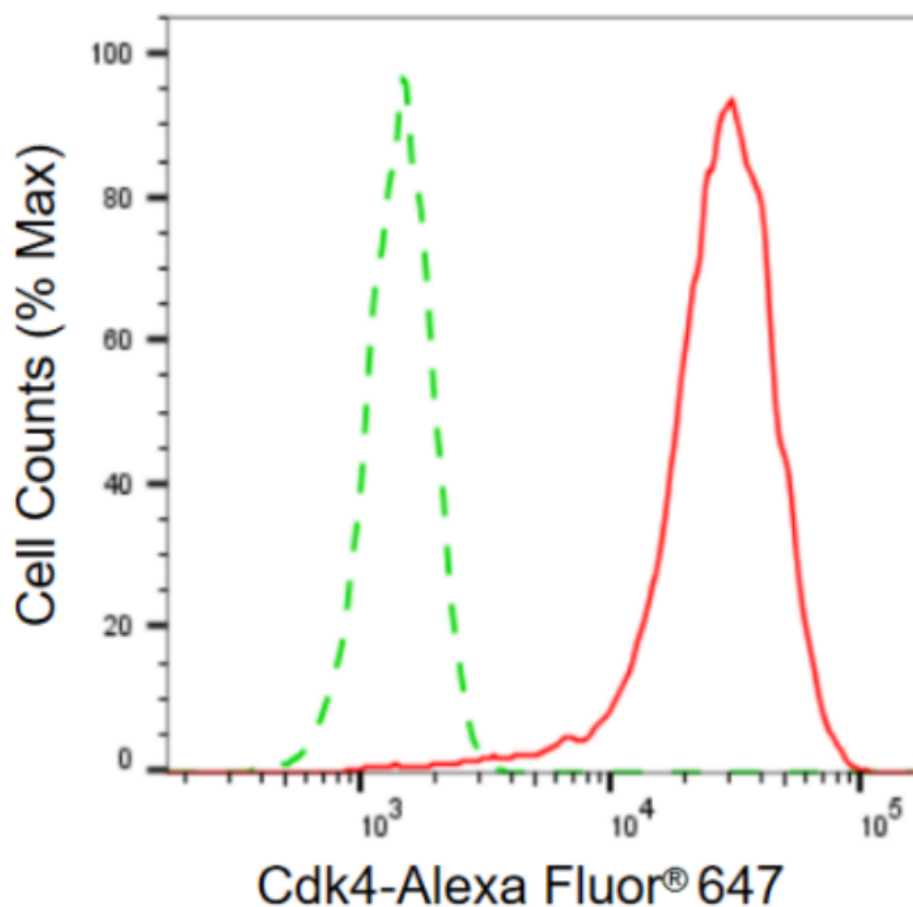
SUPPORT

SUPPORT@GENUINBIOTECH.COM
TEL: +1-540-855-7041

ORDERS

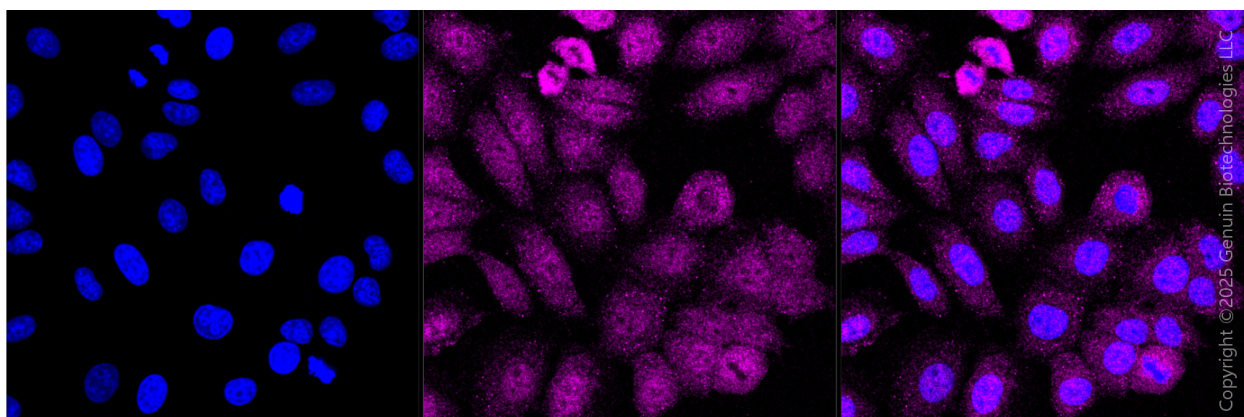
SALES@GENUINBIOTECH.COM
FAX: +1-540-855-7041

WWW.GENUINBIOTECH.COM



Copyright ©2024 Genuin Biotechnologies LLC

Flow cytometric analysis of Cdk4 expression in HepG2 cells using Cdk4 antibody (Cat#67244, 1:2,000). Green, isotype control; red, Cdk4.



Copyright ©2025 Genuin Biotechnologies LLC

Immunocytochemical staining of HepG2 cells with CDK4 antibody (Cat#67244, 1:1,000). Nuclei were stained blue with DAPI; CDK4 was stained magenta with Alexa Fluor® 647. Images were taken using Leica stellaris 5. Protein abundance based on laser Intensity and smart gain: Medium. Scale bar, 20 μ m.

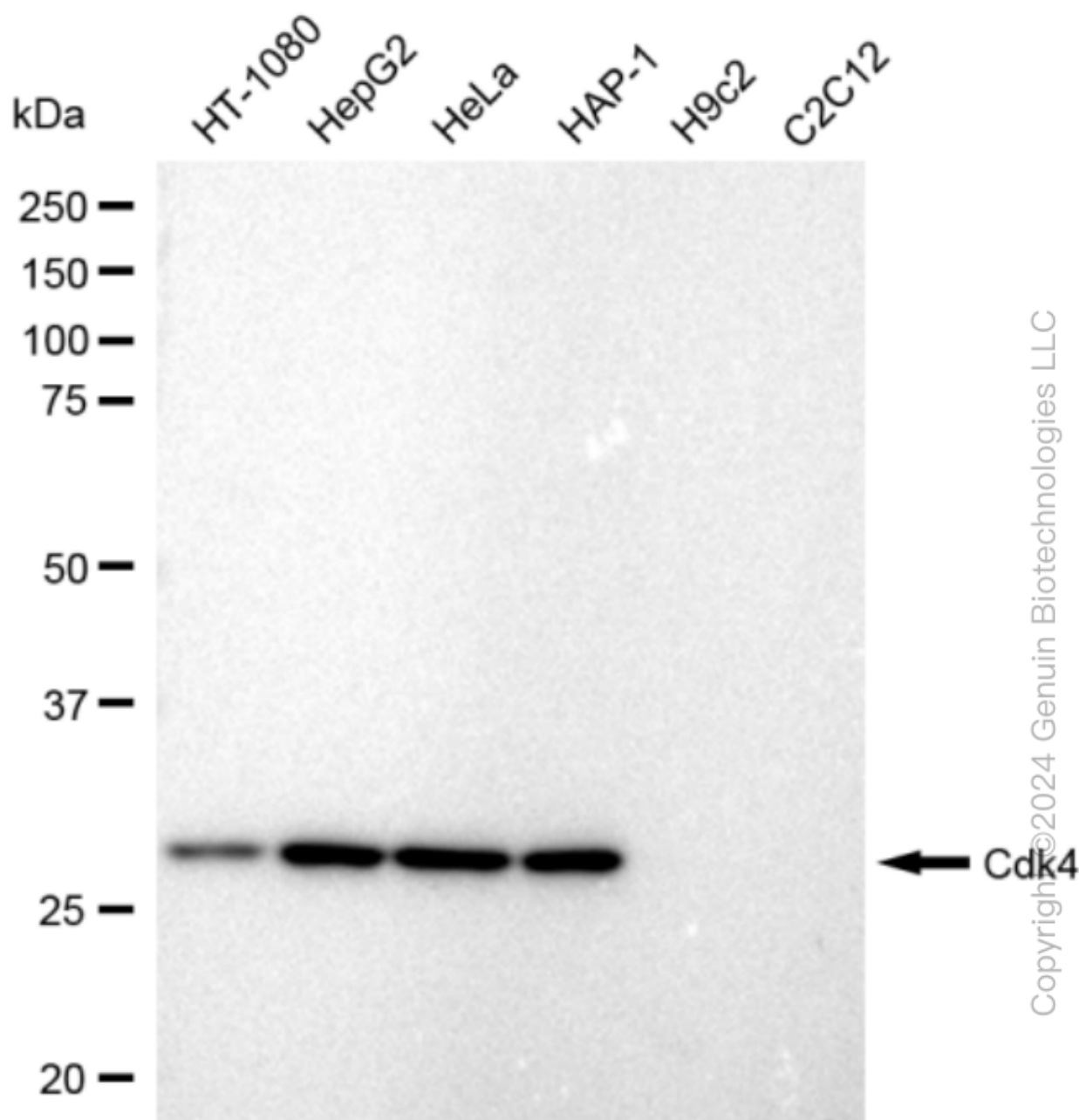
SUPPORT

SUPPORT@GENUINBIOTECH.COM
TEL: +1-540-855-7041

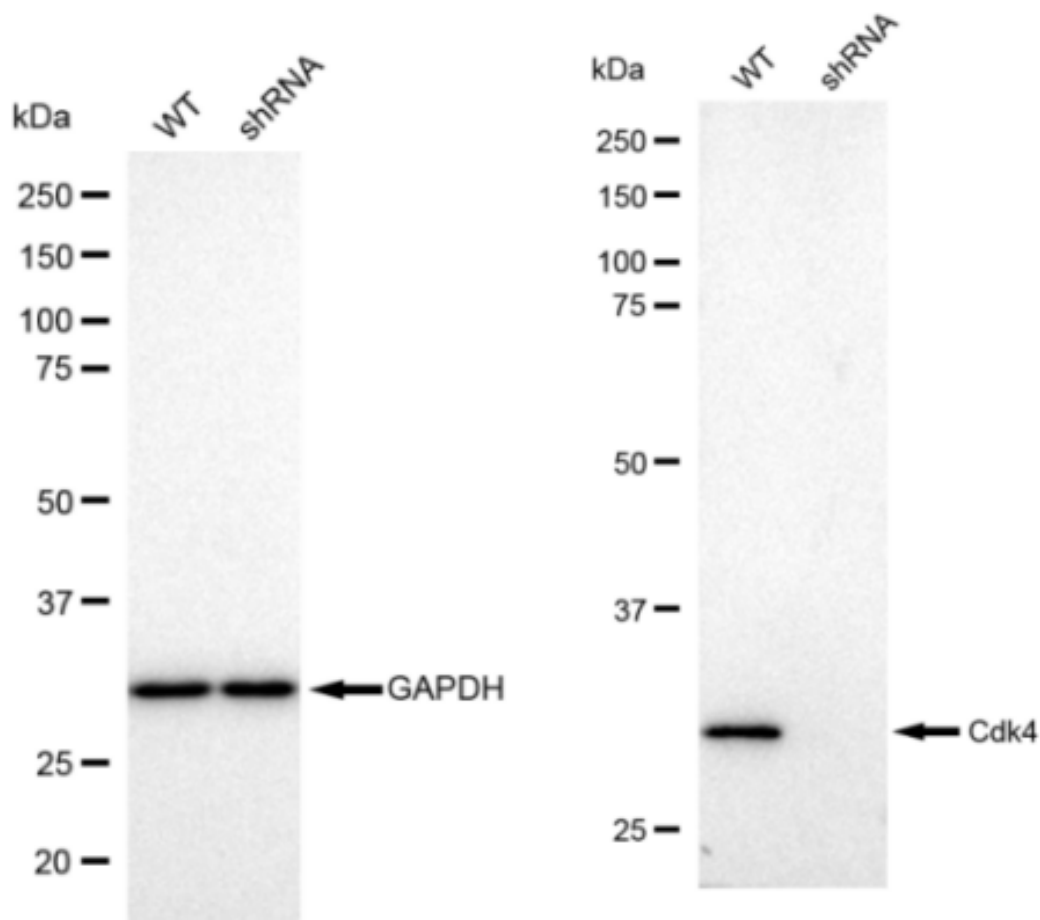
ORDERS

SALES@GENUINBIOTECH.COM
FAX: +1-540-855-7041

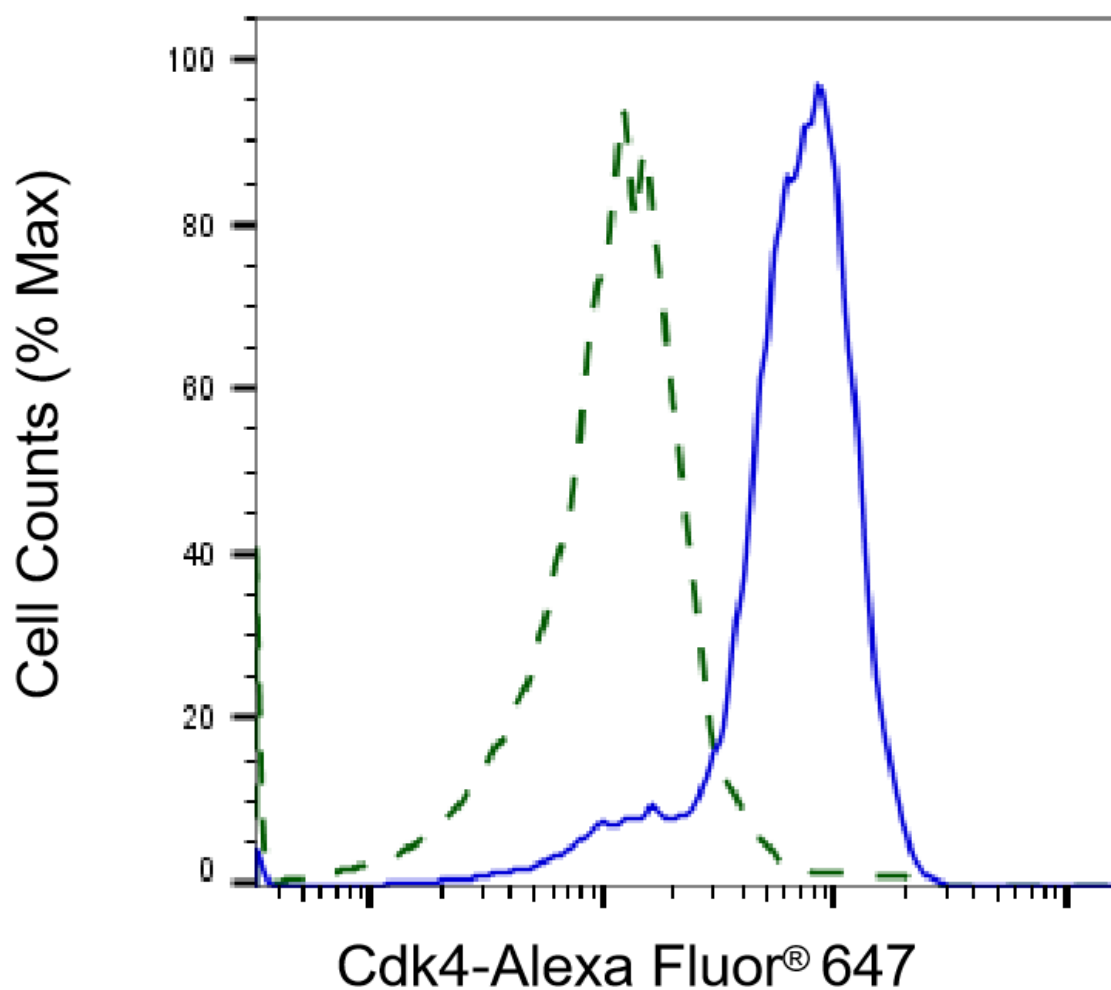
WWW.GENUINBIOTECH.COM



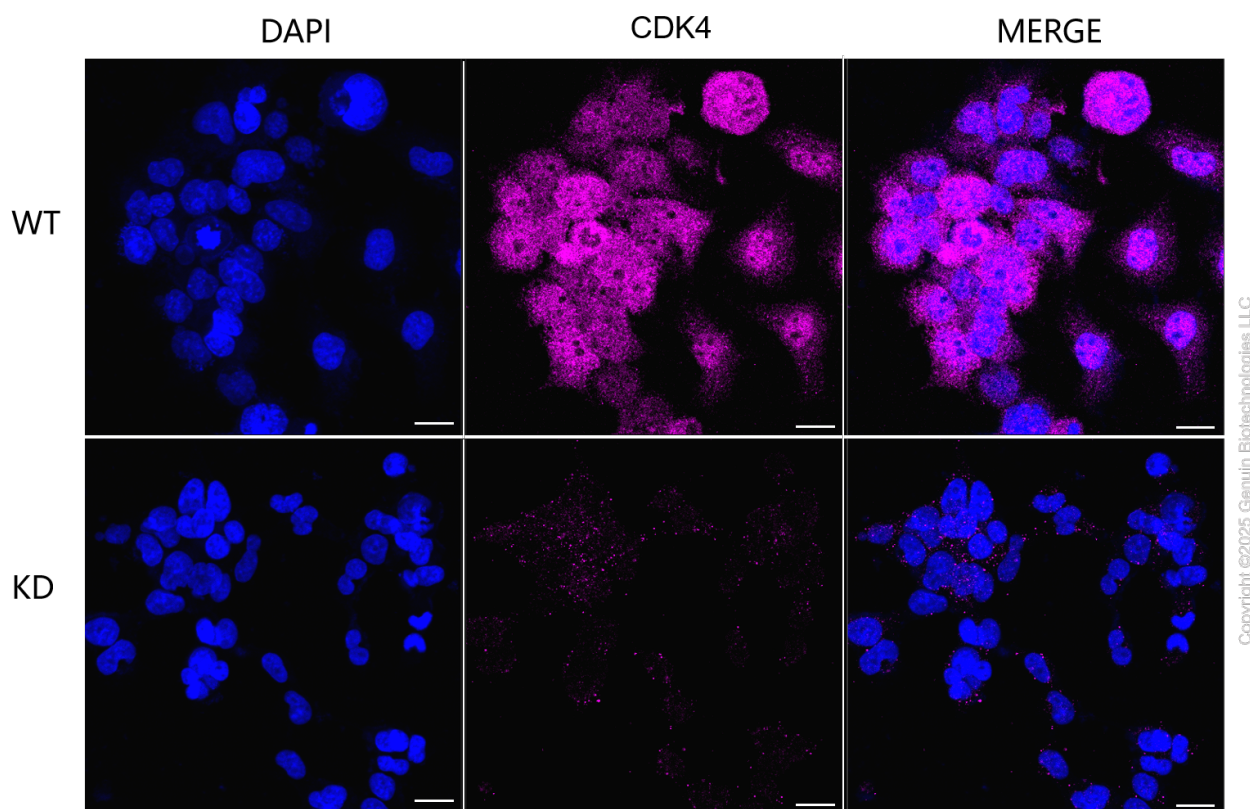
Western blotting analysis using anti-Cdk4 antibody (Cat#67244). Total cell lysates (30 µg) from various cell lines were loaded and separated by SDS-PAGE. The blot was incubated with anti-Cdk4 antibody (Cat#67244, 1:5,000) and HRP-conjugated goat anti rabbit secondary antibody (Cat#201, 1:50,000) respectively. Image was developed using FeQ™ ECL Substrate Kit (Cat#226).



Western blotting analysis using anti-Cdk4 antibody (Cat#67244). Cdk4 expression in wild type (WT) and Cdk4 shRNA knockdown (KD) HT-1080 cells with 30 μ g of total cell lysates. GAPDH serves as a loading control. The blot was incubated with anti-Cdk4 antibody (Cat#67244,1:5,000) and HRP-conjugated goat anti rabbit secondary antibody (Cat.#201,1:50,000) respectively. Image was developed using FeQ™ ECL Substrate Kit (Cat#226).



Validation of Cdk4 knockdown using flow cytometry. Wild-type(WT, Blue) and knockdown(KD, Green) HeLa cells were stained with anti-Cdk4 antibody (Cat#67244, 1:2,000) and analyzed using BD flow cytometer.



Immunocytochemical staining of HeLa cells using anti-CDK4 antibody (Cat#67244, 1:1,000), Top panel: wild-type (WT); Bottom panel: CDK4 shRNA knockdown (KD). Nuclei were stained blue with DAPI; CDK4 was stained magenta with Alexa Fluor® 647. Scale bar, 20 μ m. Permeabilization: Triton.