

KD-Validated Anti-Integrin alpha 5 Rabbit Monoclonal Antibody



Catalog #: 67315

Aliases

Integrin; Alpha 5 (Fibronectin Receptor, Alpha Polypeptide); VLA5A FNRA; CD49e; Fibronectin Receptor Subunit Alpha; Fibronectin Receptor Alpha Subunit; Integrin Alpha-F; Integrin Alpha-5; VLA-5; Very Late Activation Protein 5; Alpha Subunit; CD49 Antigen-Like Family Member E; CD49e Antigen

Background

Gene Name: ITGA5

NCBI Gene Entry: [3678](#)

UniProt Entry: [P08648](#)

Application Information

Molecular Weight: Predicted, 115 kDa, observed, 150 kDa

Clonality: Rabbit monoclonal antibody

Clone ID: 23GB1050

Species Reactivity: Human, mouse, rat

Applications Tested: Western blotting (WB), flow cytometry (FCM), immunocytochemistry (IC)

Immunogen

A synthesized peptide derived from human Integrin alpha 5

Isotype

Rabbit IgG

Storage Buffer

Supplied in PBS (pH 7.4) containing 50% glycerol, and 0.02% sodium azide.

Storage

Store at -20 °C for one year.

Recommended Dilutions

Western Blotting (WB): 1:1,000-1:5,000

Flow Cytometry (FCM): 1:2,000

Immunocytochemistry (IC): 1:100-1:1,000

SUPPORT

SUPPORT@GENUINBIOTECH.COM
TEL: +1-540-855-7041

ORDERS

SALES@GENUINBIOTECH.COM
FAX: +1-540-855-7041

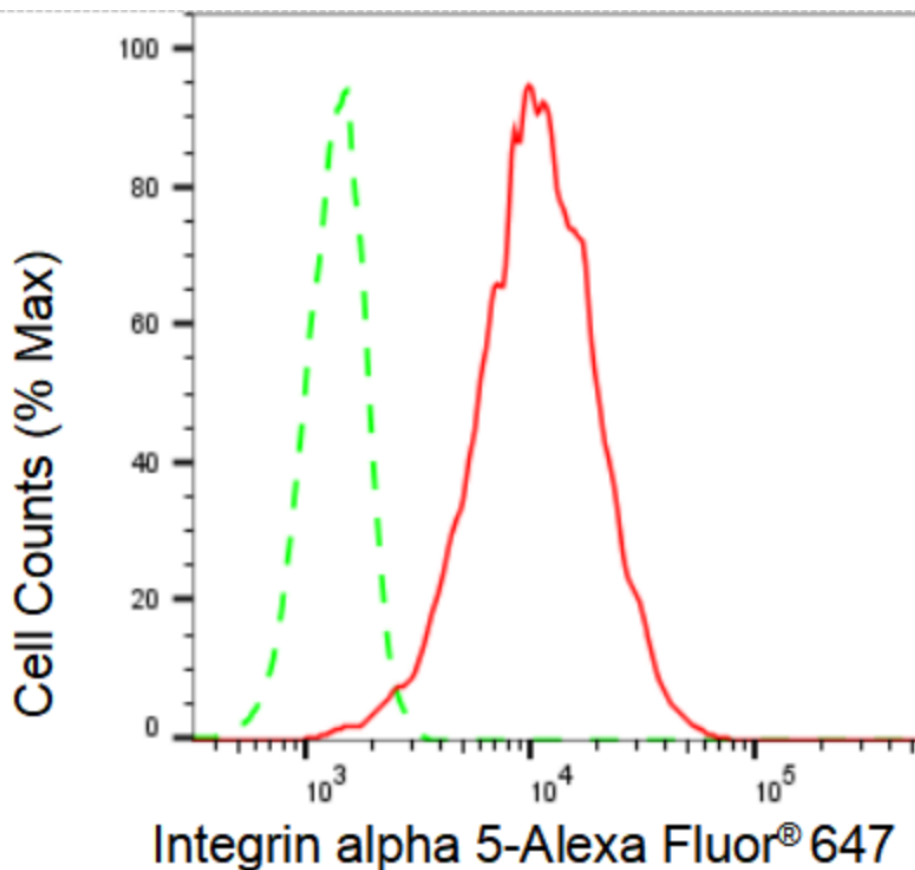
WWW.GENUINBIOTECH.COM

KD-Validated Anti-Integrin alpha 5 Rabbit Monoclonal Antibody

PAGE 2

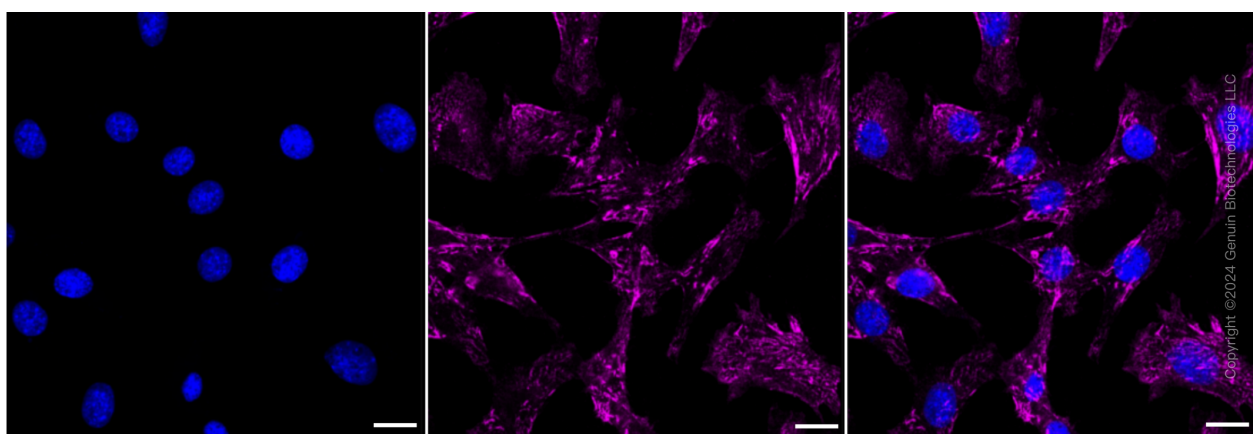
Note: This product is for research use only.

Validation Data



Copyright ©2024 Genuin Biotechnologies LLC

Flow cytometric analysis of Integrin alpha 5 expression in C2C12 cells using Integrin alpha 5 antibody (Cat#67315, 1:2,000). Green, isotype control; red, Integrin alpha 5.



Copyright ©2024 Genuin Biotechnologies LLC

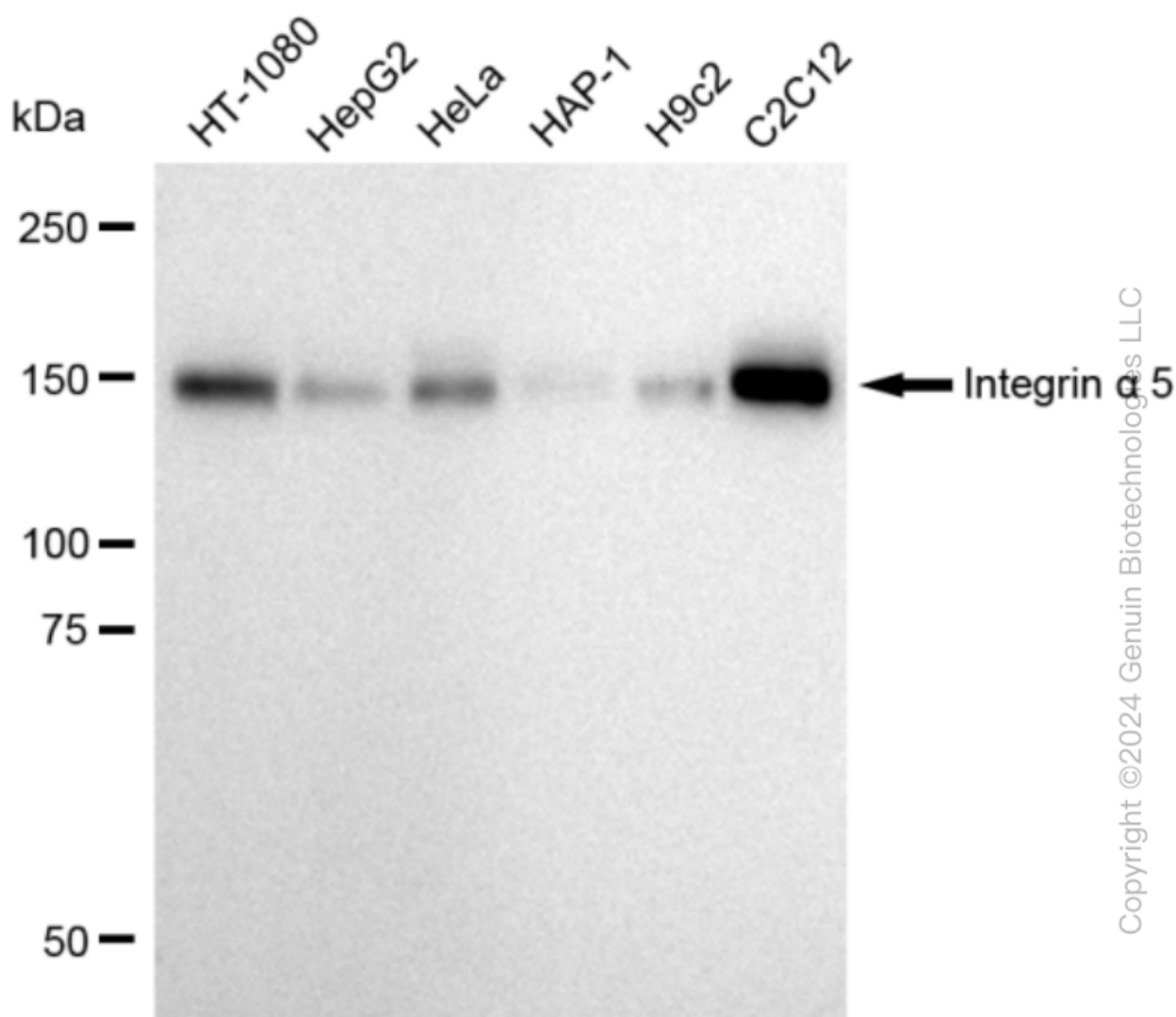
SUPPORT

SUPPORT@GENUINBIOTECH.COM
TEL: +1-540-855-7041

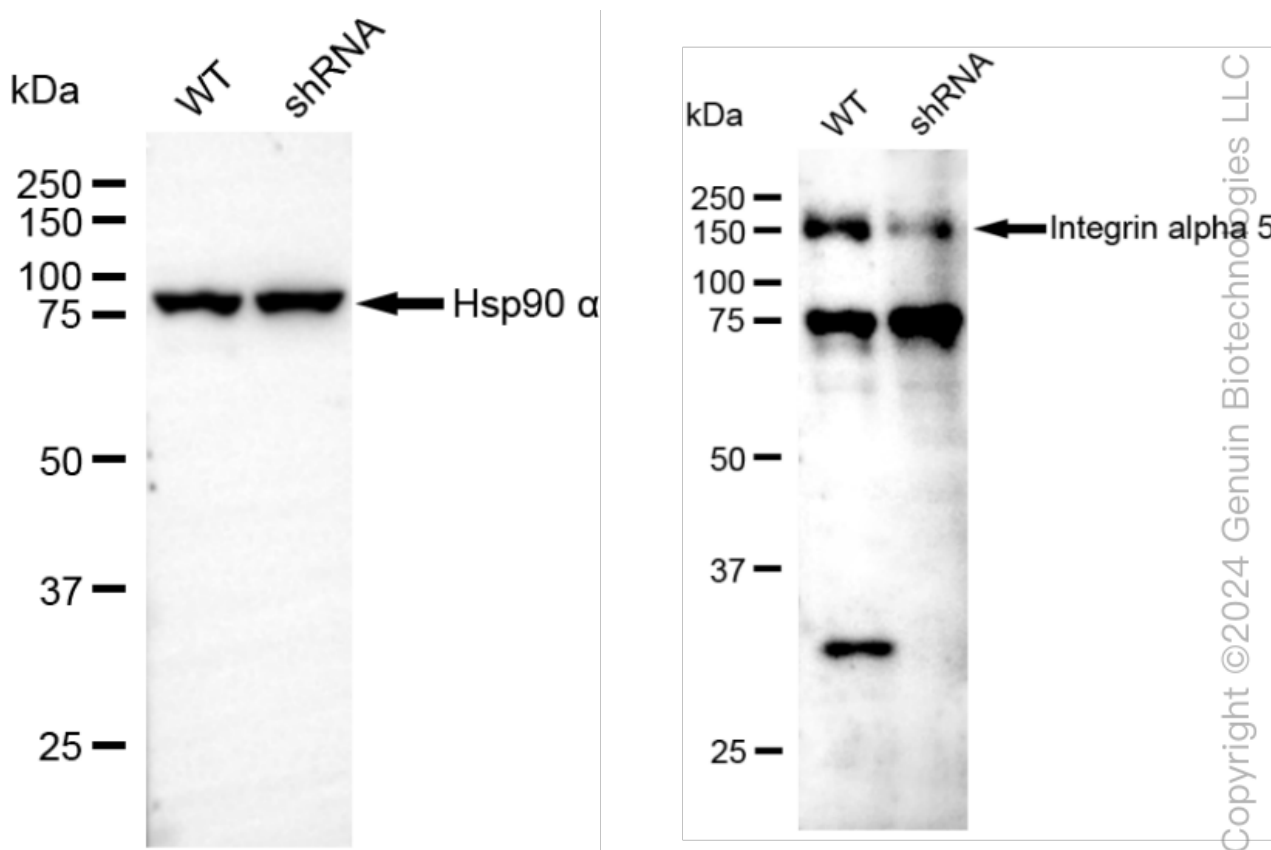
ORDERS

SALES@GENUINBIOTECH.COM
FAX: +1-540-855-7041

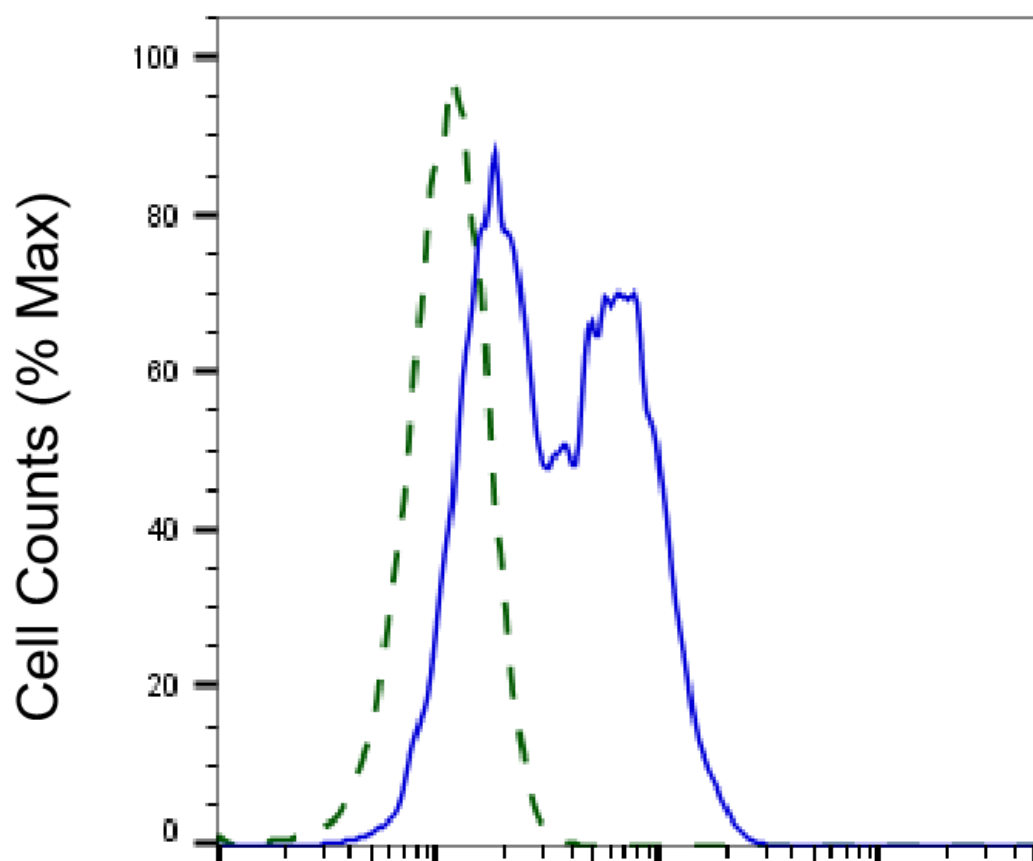
WWW.GENUINBIOTECH.COM



Western blotting analysis using anti-Integrin alpha 5 antibody (Cat#67315). Total cell lysates (30 µg) from various cell lines were loaded and separated by SDS-PAGE. The blot was incubated with anti-Integrin alpha 5 antibody (Cat#67315, 1:5,000) and HRP-conjugated goat anti-rabbit secondary antibody (Cat#201, 1:50,000) respectively. Image was developed using FeQ™ ECL Substrate Kit (Cat#226).



Western blotting analysis using anti-Integrin alpha 5 antibody (Cat#67315). Integrin alpha 5 expression in wild type (WT) and Integrin alpha 5 shRNA knockdown (KD) HeLa cells with 30 μ g of total cell lysates. β -Tubulin serves as a loading control. The blot was incubated with anti-Integrin alpha 5 antibody (Cat#67315, 1:5,000) and HRP-conjugated goat anti-rabbit secondary antibody (Cat#201, 1:20,000) respectively. Image was developed using FeQ™ ECL Substrate Kit (Cat#226).



Copyright ©2025 Genuin Biotechnologies LLC

Integrin alpha 5-Alexa Fluor® 647

Validation of Integrin alpha 5 knockdown using flow cytometry. Wild-type(WT, Blue) and knockdown(KD, Green) HeLa cells were stained with anti-Integrin alpha 5 antibody (Cat#67315, 1:2,000) and analyzed using CytoFLEX.