

KD-Validated Anti-Argonaute RISC catalytic component 2 Recombinant Rabbit Monoclonal



Catalog #: 67352

Aliases

AGO2; Argonaute RISC Catalytic Component 2; LINC00980; EIF2C2; Q10; Cancer Susceptibility Candidate 7 (Non-Protein Coding); Eukaryotic Translation Initiation Factor 2C, 2; PAZ Piwi Domain Protein; Protein Argonaute-2; Protein Slicer; HAGO2; CASC7; PPD; Eukaryotic Translation Initiation Factor 2C 2; Long Intergenic Non-Protein Coding RNA 980; Argonaute 2, RISC Catalytic Component; EC 3.1.26.N2; EC 3.1.26.N1; Argonaute 2; Argonaute2; EIF-2C 2; LESKRES; EIF2C 2; HAgo2

Background

Gene Name: AGO2

NCBI Gene Entry: [27161](#)

UniProt Entry: [Q9UKV8](#)

Application Information

Molecular Weight: Predicted, 97 kDa, observed, 97 kDa

Clonality: Rabbit monoclonal antibody

Clone ID: 23GB1790

Species Reactivity: Human, mouse, rat

Applications Tested: Western blotting (WB), flow cytometry (FCM), immunocytochemistry (IC)

Immunogen

A synthesized peptide derived from human Argonaute 2

Isotype

Rabbit IgG

Storage Buffer

Supplied in PBS (pH 7.4) containing 50% glycerol, and 0.02% sodium azide.

Storage

Store at -20 °C for one year.

Recommended Dilutions

Western Blotting (WB): 1:1,000-1:5,000

Flow Cytometry (FCM): 1:2,000

Immunocytochemistry (IC): 1:100-1:1,000

SUPPORT

SUPPORT@GENUINBIOTECH.COM
TEL: +1-540-855-7041

ORDERS

SALES@GENUINBIOTECH.COM
FAX: +1-540-855-7041

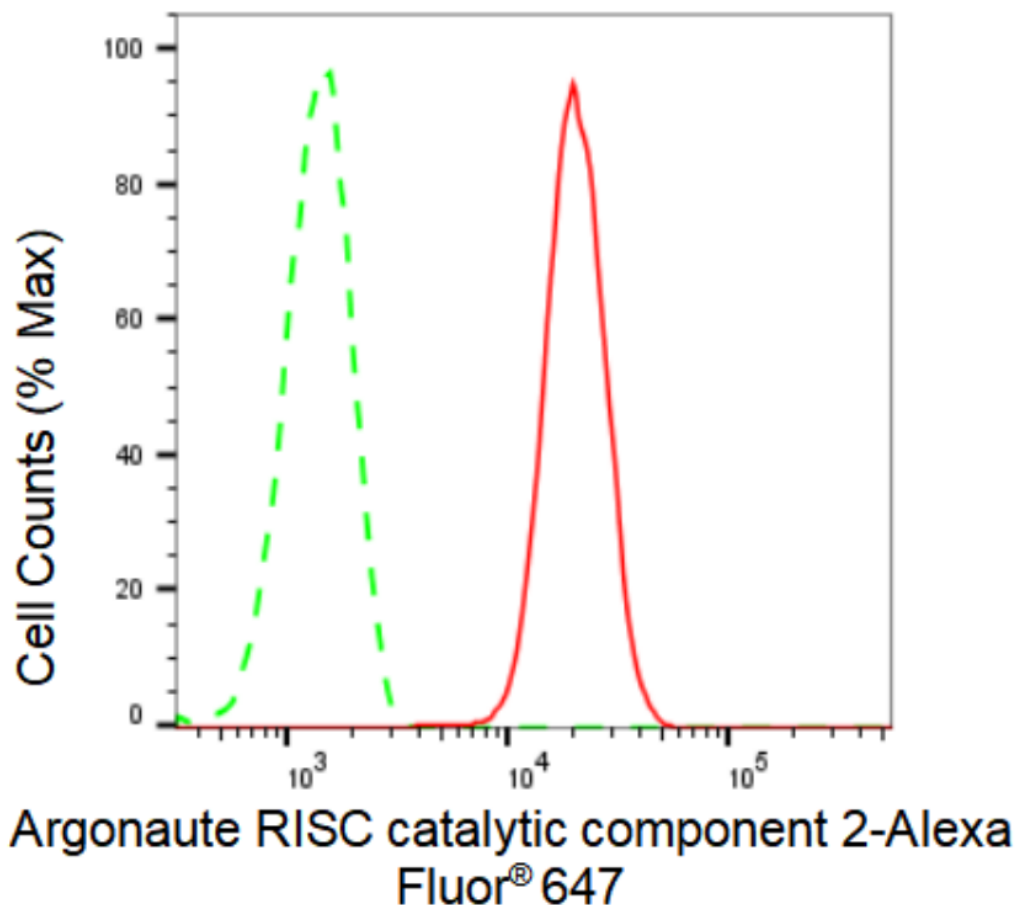
WWW.GENUINBIOTECH.COM

KD-Validated Anti-Argonaute RISC catalytic component 2 Recombinant Rabbit Monoclonal

PAGE 2

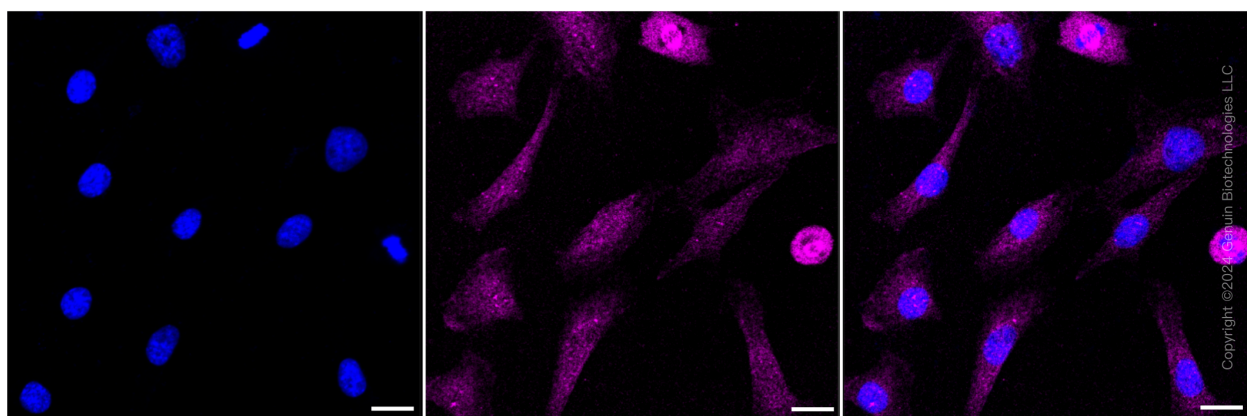
Note: This product is for research use only.

Validation Data



Copyright ©2024 Genuin Biotechnologies LLC

Flow cytometric analysis of Argonaute RISC catalytic component 2 expression in C2C12 cells using Argonaute RISC catalytic component 2 antibody (Cat#67352, 1:2,000). Green, isotype control; red, Argonaute RISC catalytic component 2.



Immunocytochemical staining of C2C12 cells with Argonaute RISC catalytic component 2

SUPPORT

SUPPORT@GENUINBIOTECH.COM
TEL: +1-540-855-7041

ORDERS

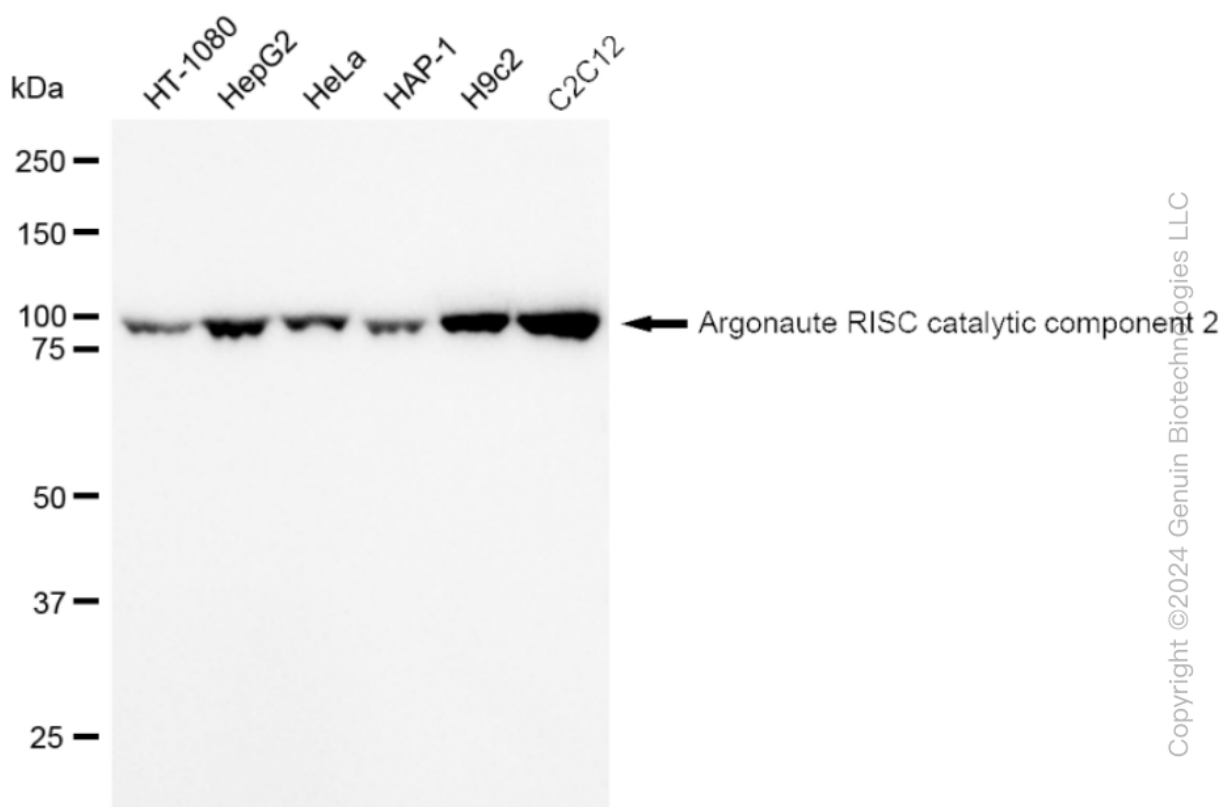
SALES@GENUINBIOTECH.COM
FAX: +1-540-855-7041

WWW.GENUINBIOTECH.COM

KD-Validated Anti-Argonaute RISC catalytic component 2 Recombinant Rabbit Monoclonal

PAGE 3

antibody (Cat#67352, 1:1,000). Nuclei were stained blue with DAPI; Argonaute RISC catalytic component 2 was stained magenta with Alexa Fluor® 647. Images were taken using Leica stellaris 5. Protein abundance based on laser Intensity and smart gain: Medium. Scale bar: 20 μ m.



Western blotting analysis using anti-Argonaute RISC catalytic component 2 antibody (Cat#67352). Total cell lysates (30 μ g) from various cell lines were loaded and separated by SDS-PAGE. The blot was incubated with anti-Argonaute RISC catalytic component 2 antibody (Cat#67352, 1:5,000) and HRP-conjugated goat anti-rabbit secondary antibody (Cat#201, 1:20,000) respectively. Image was developed using FeQ™ ECL Substrate Kit (Cat#226).

SUPPORT

SUPPORT@GENUINBIOTECH.COM
TEL: +1-540-855-7041

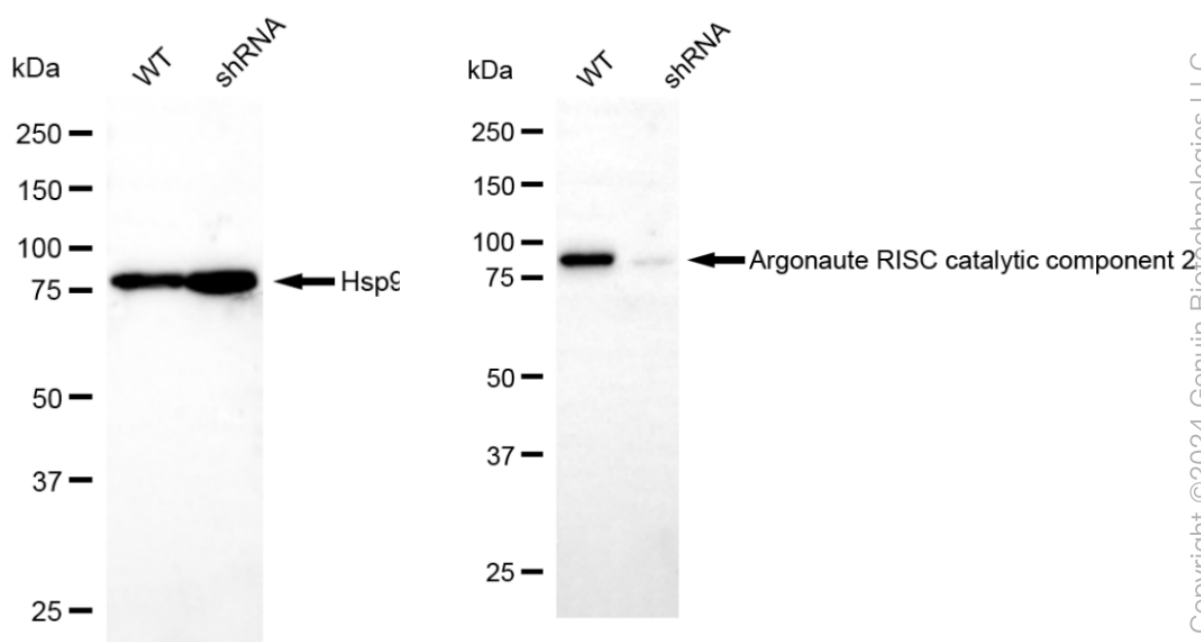
ORDERS

SALES@GENUINBIOTECH.COM
FAX: +1-540-855-7041

WWW.GENUINBIOTECH.COM

KD-Validated Anti-Argonaute RISC catalytic component 2 Recombinant Rabbit Monoclonal

PAGE 4



Copyright ©2024 Genuin Biotechnologies LLC

Western blotting analysis using anti-Argonaute RISC catalytic component 2 antibody (Cat#67352). Argonaute RISC catalytic component 2 expression in wild type (WT) and Argonaute RISC catalytic component 2 shRNA knockdown (KD) HeLa cells with 30 μ g of total cell lysates. β -Tubulin serves as a loading control. The blot was incubated with anti-Argonaute RISC catalytic component 2 antibody (Cat#67352, 1:5,000) and HRP-conjugated goat anti-rabbit secondary antibody (Cat#201, 1:20,000) respectively. Image was developed using FeQ™ ECL Substrate Kit (Cat#226).

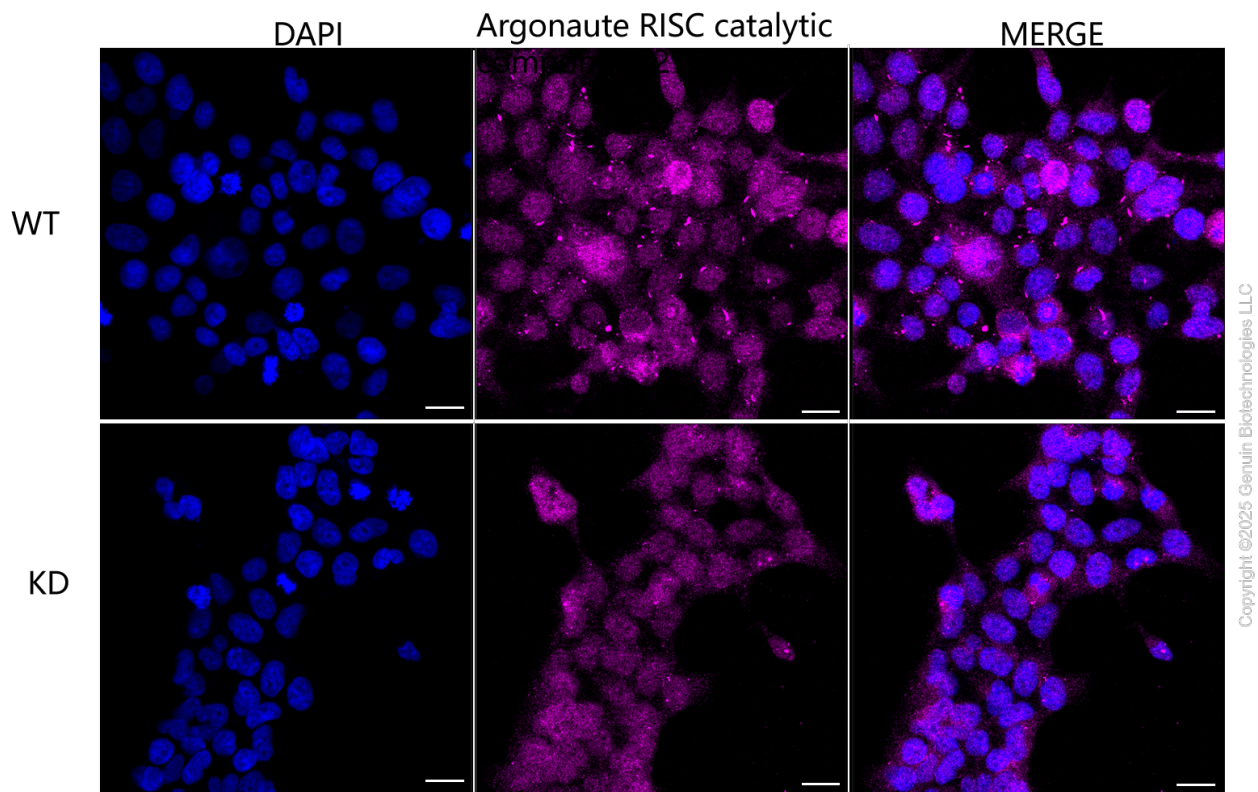
SUPPORT

SUPPORT@GENUINBIOTECH.COM
TEL: +1-540-855-7041

ORDERS

SALES@GENUINBIOTECH.COM
FAX: +1-540-855-7041

WWW.GENUINBIOTECH.COM



Immunocytochemical staining of HeLa cells using anti-Argonaute RISC catalytic component 2 antibody (Cat#67352, 1:1,000), Top panel: wild-type (WT); Bottom panel: Argonaute RISC catalytic component 2 shRNA knockdown (KD). Nuclei were stained blue with DAPI; Argonaute RISC catalytic component 2 was stained magenta with Alexa Fluor® 647. Scale bar, 20 μ m.