

KD-Validated Anti-GSK3 alpha/beta Rabbit Monoclonal Antibody



Catalog #: 67431

Aliases

GSK3A; Glycogen Synthase Kinase 3 Alpha; Serine/Threonine-Protein Kinase GSK3A; Glycogen Synthase Kinase-3 Alpha; EC 2.7.11.26; GSK-3 Alpha; EC 2.7.11.1; EC 2.7.11; Glycogen Synthase Kinase 3 Beta; Serine/Threonine-Protein Kinase GSK3B; Glycogen Synthase Kinase-3 Beta; EC 2.7.11.26; GSK-3 Beta; EC 2.7.11.1; EC 2.7.11

Background

Gene Name: GSK3A/GSK3B

NCBI Gene Entry: [2931/2932](#)

UniProt Entry: [P49840/P49841](#)

Application Information

Molecular Weight: Predicted, 51 kDa, observed, 51,47 kDa

Clonality: Rabbit monoclonal antibody

Clone ID: 23GB1100

Species Reactivity: Human, mouse, rat

Applications Tested: Western blotting (WB), flow cytometry (FCM), immunocytochemistry (IC)

Immunogen

Recombinant protein of human GSK3 alpha

Isotype

Rabbit IgG

Storage Buffer

Supplied in PBS (pH 7.4) containing 50% glycerol, and 0.02% sodium azide.

Storage

Store at -20 °C for one year.

Recommended Dilutions

Western Blotting (WB): 1:1,000-1:2,500

Flow Cytometry (FCM): 1:2,000

Immunocytochemistry (IC): 1:100-1:1,000

SUPPORT

SUPPORT@GENUINBIOTECH.COM
TEL: +1-540-855-7041

ORDERS

SALES@GENUINBIOTECH.COM
FAX: +1-540-855-7041

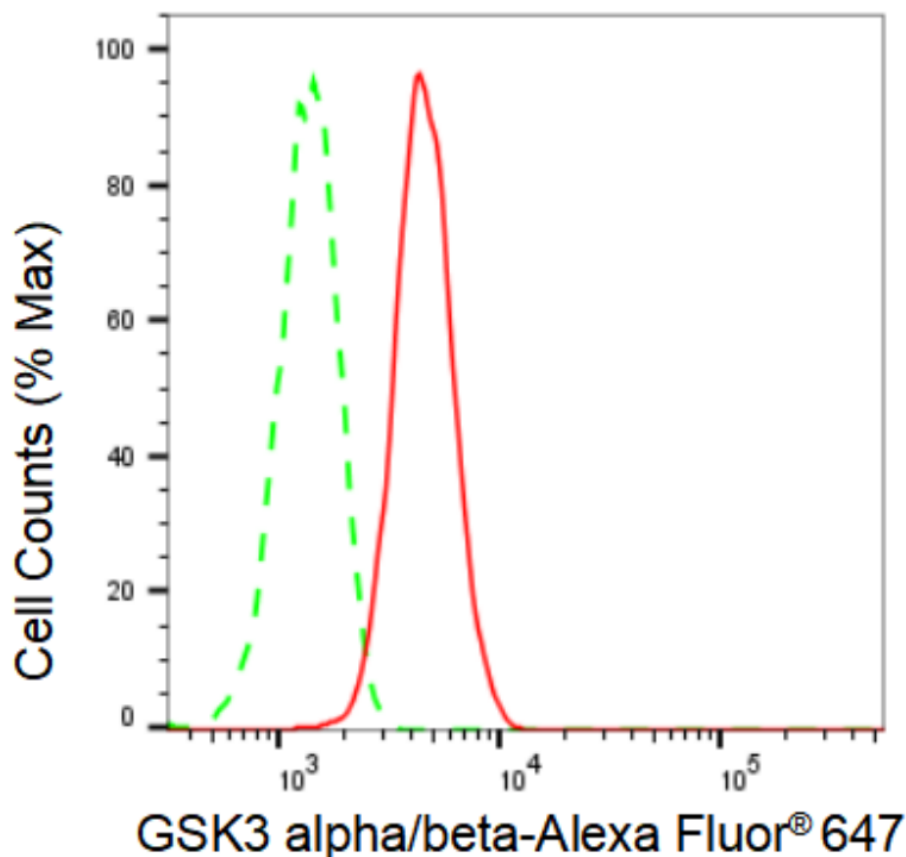
WWW.GENUINBIOTECH.COM

KD-Validated Anti-GSK3 alpha/beta Rabbit Monoclonal Antibody

PAGE 2

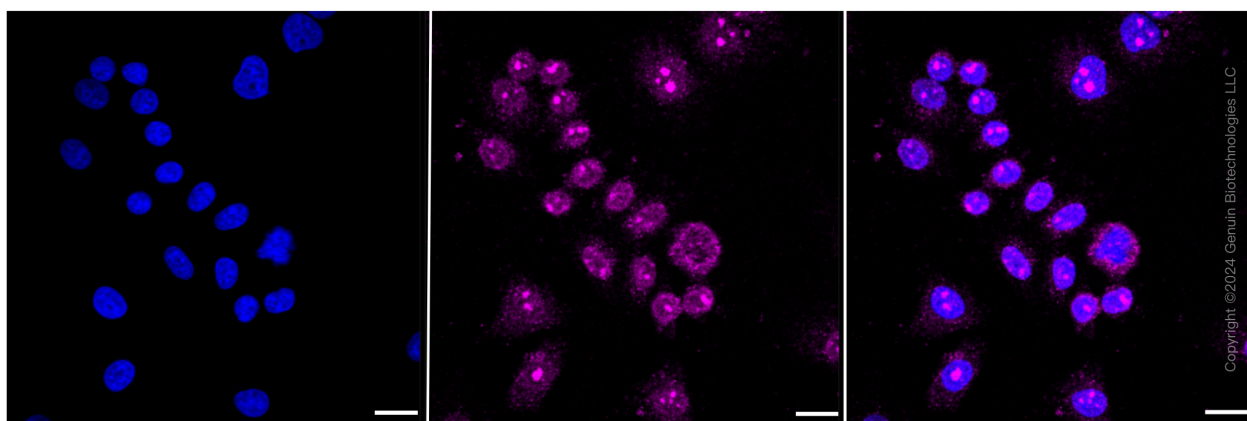
Note: This product is for research use only.

Validation Data



Copyright ©2024 Genuin Biotechnologies LLC

Flow cytometric analysis of GSK3 alpha/beta expression in HepG2 cells using GSK3 alpha/beta antibody (Cat#67431, 1:2,000). Green, isotype control; red, GSK3 alpha/beta.



Copyright ©2024 Genuin Biotechnologies LLC

Immunocytochemical staining of HepG2 cells with GSK3 alpha/beta antibody (Cat#67431, 1:1,000). Nuclei were stained blue with DAPI; GSK3 alpha/beta was stained magenta with Alexa Fluor® 647. Images were taken using Leica stellaris 5. Protein abundance based on laser Intensity and smart gain: Medium. Scale bar: 20 μm.

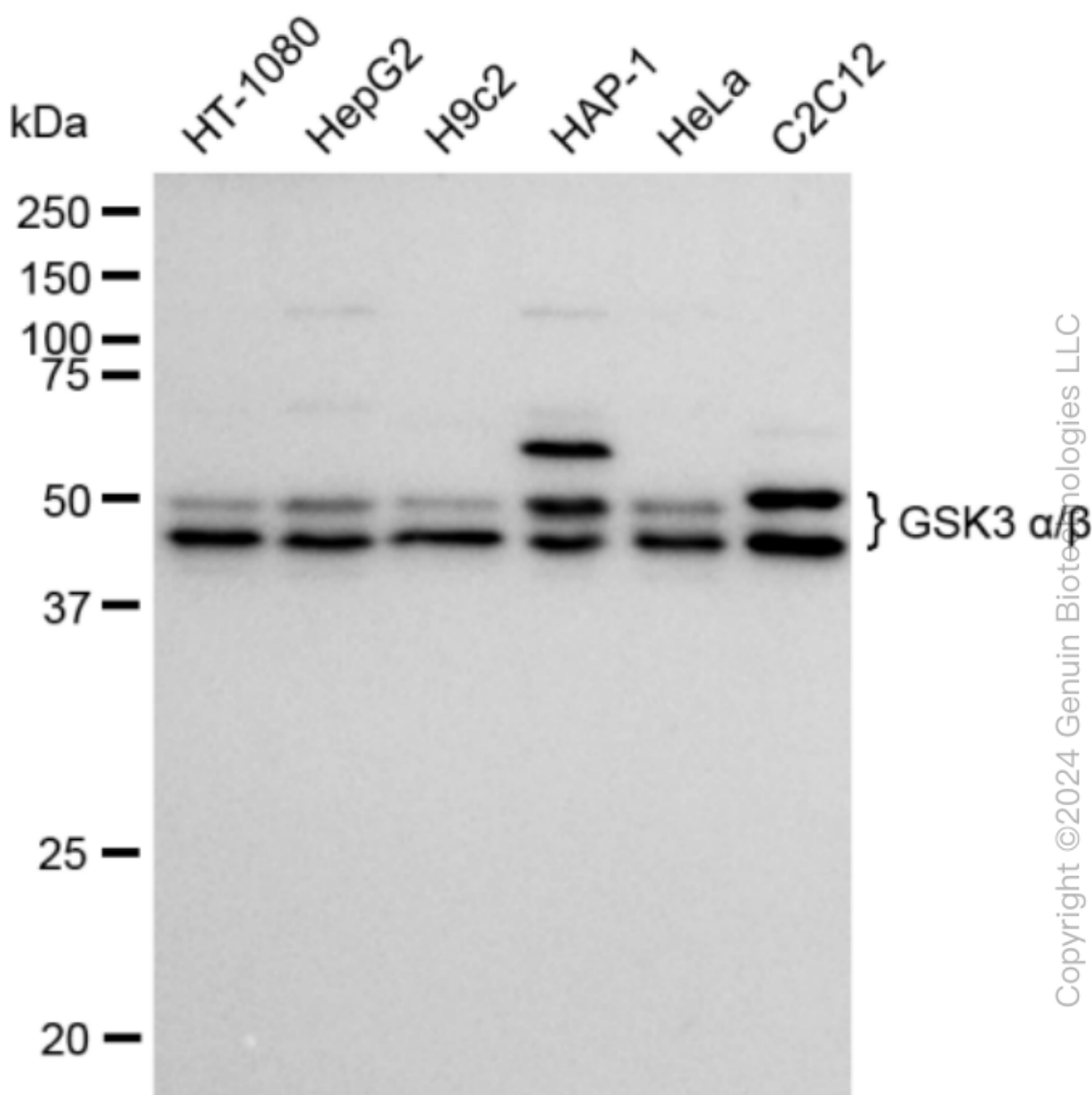
SUPPORT

SUPPORT@GENUINBIOTECH.COM
TEL: +1-540-855-7041

ORDERS

SALES@GENUINBIOTECH.COM
FAX: +1-540-855-7041

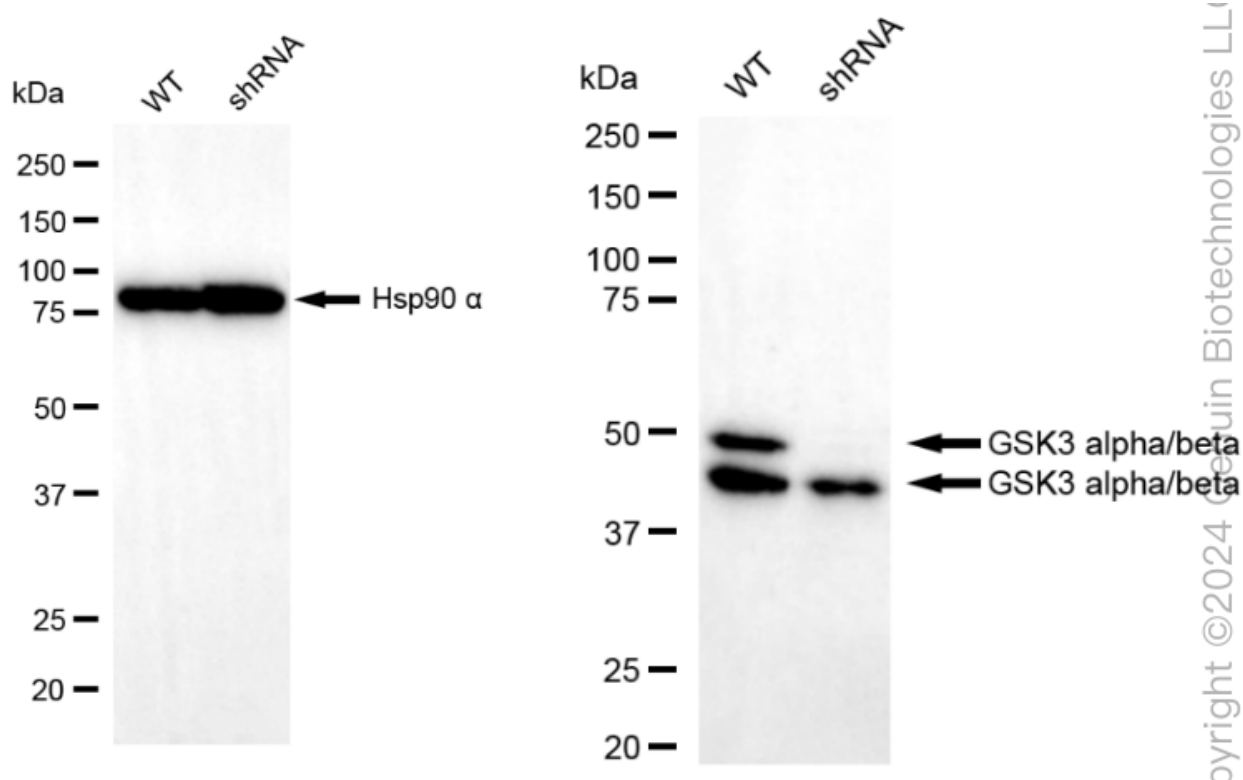
WWW.GENUINBIOTECH.COM



Western blotting analysis using anti-GSK3 alpha/beta antibody (Cat#67431). Total cell lysates (30 µg) from various cell lines were loaded and separated by SDS-PAGE. The blot was incubated with anti-GSK3 alpha/beta antibody (Cat#67431, 1:2,500) and HRP-conjugated goat anti-rabbit secondary antibody (Cat#201, 1:50,000) respectively. Image was developed using FeQ™ ECL Substrate Kit (Cat#226).

KD-Validated Anti-GSK3 alpha/beta Rabbit Monoclonal Antibody

PAGE 4



Western blotting analysis using anti-GSK3 α/ antibody (Cat#67431). GSK3 α/ expression in wildtype (WT) and GSK3 α/3 shRNA knockdown (KD) HeLa cells with 30 ug of total cell lysates. B-Tubulin serves as a loading control. The blot was incubated with anti-GSK3 α/ antibody (Cat#67431, 1:2,500) and HRP-conjugated goat anti-rabbit secondary antibody (Cat#201, 1:20,000) respectively. Image was developed using FeQ™ ECL Substrate Kit (Cat#226).

SUPPORT

SUPPORT@GENUINBIOTECH.COM
TEL: +1-540-855-7041

ORDERS

SALES@GENUINBIOTECH.COM
FAX: +1-540-855-7041

WWW.GENUINBIOTECH.COM