

KD-Validated Anti-Smad4 Recombinant Rabbit Monoclonal Antibody



Catalog #: 67514

Aliases

DPC4; MADH4; Mothers Against Decapentaplegic Homolog 4; Deletion Target In Pancreatic Carcinoma 4; MAD Homolog 4; MAD, Mothers Against Decapentaplegic Homolog 4 (Drosophila); Mothers Against Decapentaplegic, Drosophila, Homolog Of, 4; SMAD, Mothers Against DPP Homolog 4 (Drosophila); Deleted In Pancreatic Carcinoma Locus 4; SMAD, Mothers Against DPP Homolog 4; Mothers Against DPP Homolog 4; SMAD 4; HSMAD4; MYHRS; Smad4; JIP

Background

Gene Name: SMAD4

NCBI Gene Entry: [4089](#)

UniProt Entry: [Q13485](#)

Application Information

Molecular Weight: Predicted, 60 kDa, observed, 65 kDa

Clonality: Rabbit monoclonal antibody

Clone ID: 23GB975

Species Reactivity: Human, mouse, rat

Applications Tested: Western blotting (WB), flow cytometry (FCM), immunocytochemistry (IC)

Immunogen

A synthesized peptide derived from human Smad4

Isotype

Rabbit IgG

Storage Buffer

Supplied in PBS (pH 7.4) containing 50% glycerol, and 0.02% sodium azide.

Storage

Store at -20 °C for one year.

Recommended Dilutions

Western Blotting (WB): 1:1,000-1:5,000

Flow Cytometry (FCM): 1:2,000

Immunocytochemistry (IC): 1:100-1:1,000

SUPPORT

SUPPORT@GENUINBIOTECH.COM
TEL: +1-540-855-7041

ORDERS

SALES@GENUINBIOTECH.COM
FAX: +1-540-855-7041

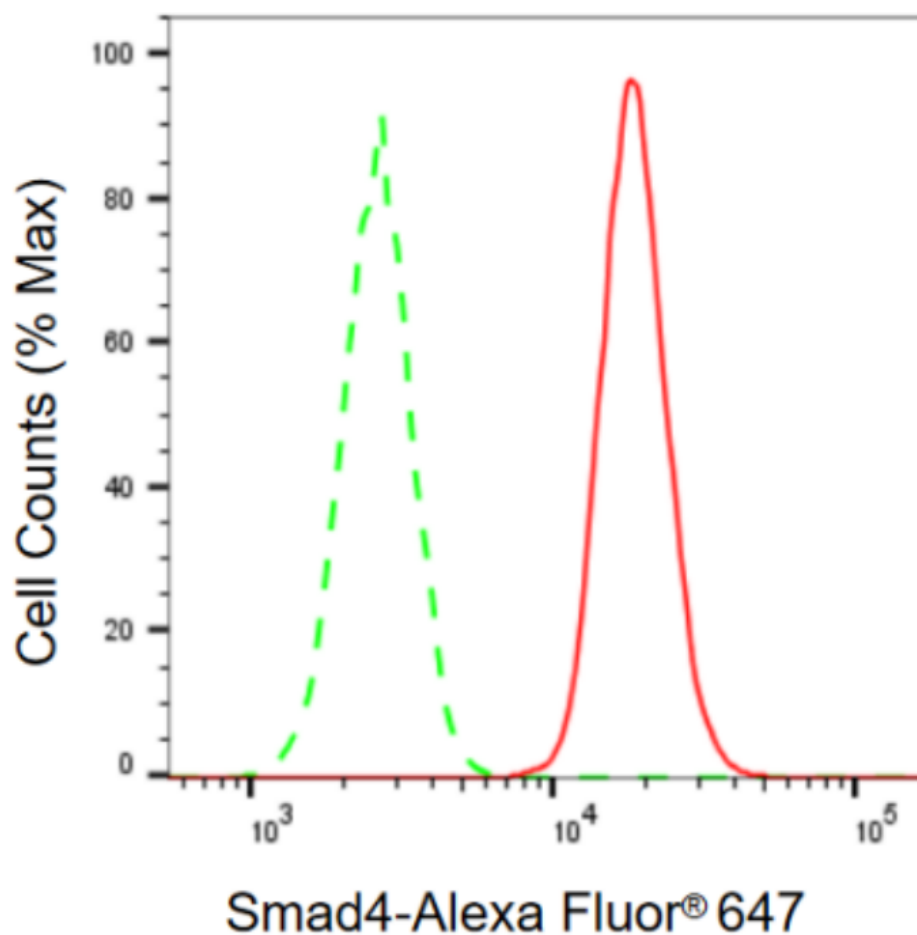
WWW.GENUINBIOTECH.COM

KD-Validated Anti-Smad4 Recombinant Rabbit Monoclonal Antibody

PAGE 2

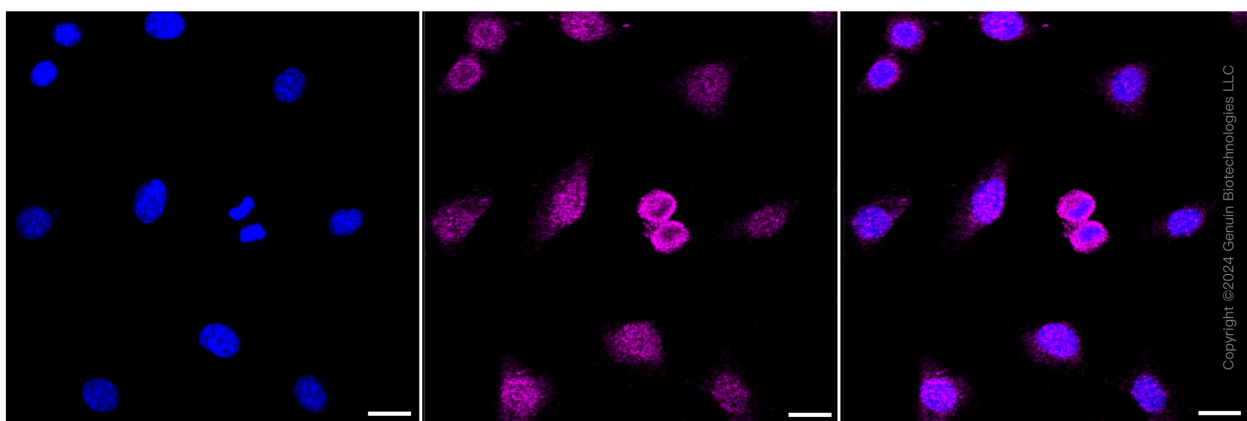
Note: This product is for research use only.

Validation Data



Copyright ©2024 Genuin Biotechnologies LLC

Flow cytometric analysis of Smad4 expression in C2C12 cells using Smad4 antibody (Cat#67514,1:2,000). Green, isotype control; red, Smad4.



Copyright ©2024 Genuin Biotechnologies LLC

SUPPORT

SUPPORT@GENUINBIOTECH.COM
TEL: +1-540-855-7041

ORDERS

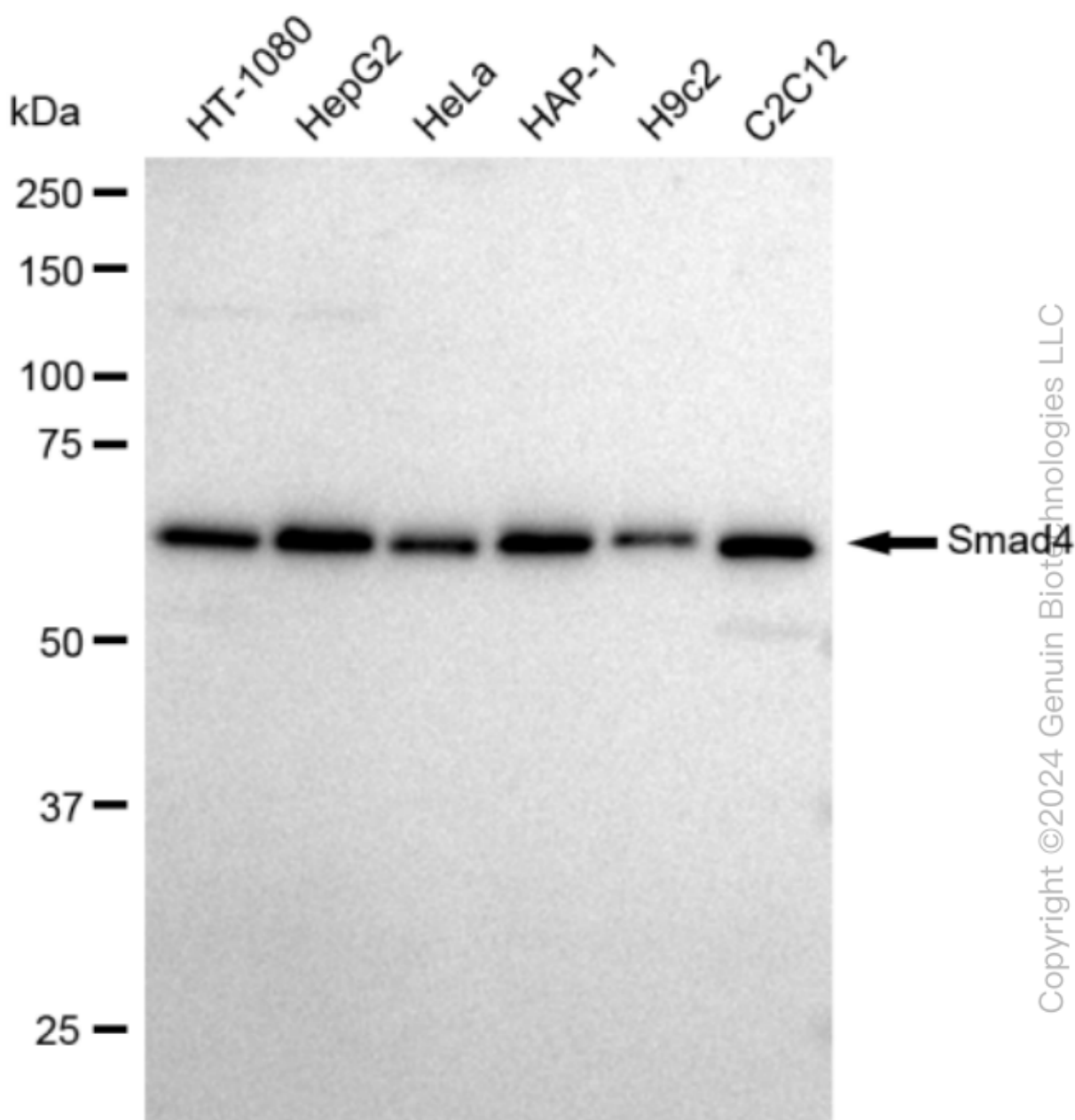
SALES@GENUINBIOTECH.COM
FAX: +1-540-855-7041

WWW.GENUINBIOTECH.COM

KD-Validated Anti-Smad4 Recombinant Rabbit Monoclonal Antibody

PAGE 3

Immunocytochemical staining of C2C12 cells with Smad4 antibody (Cat#67514, 1:1,000). Nuclei were stained blue with DAPI; Smad4 was stained magenta with Alexa Fluor® 647. Images were taken using Leica stellaris 5. Protein abundance based on laser Intensity and smart gain: Medium. Scale bar: 20 μ m.



Western blotting analysis using anti-Smad4 antibody (Cat#67514). Total cell lysates (30 μ g) from various cell lines were loaded and separated by SDS-PAGE. The blot was incubated with anti-Smad4 antibody (Cat#67514, 1:5,000) and HRP-conjugated goat anti rabbit secondary antibody (Cat#201, 1:50,000) respectively. Image was developed using FeQ™ ECL Substrate Kit (Cat#226).

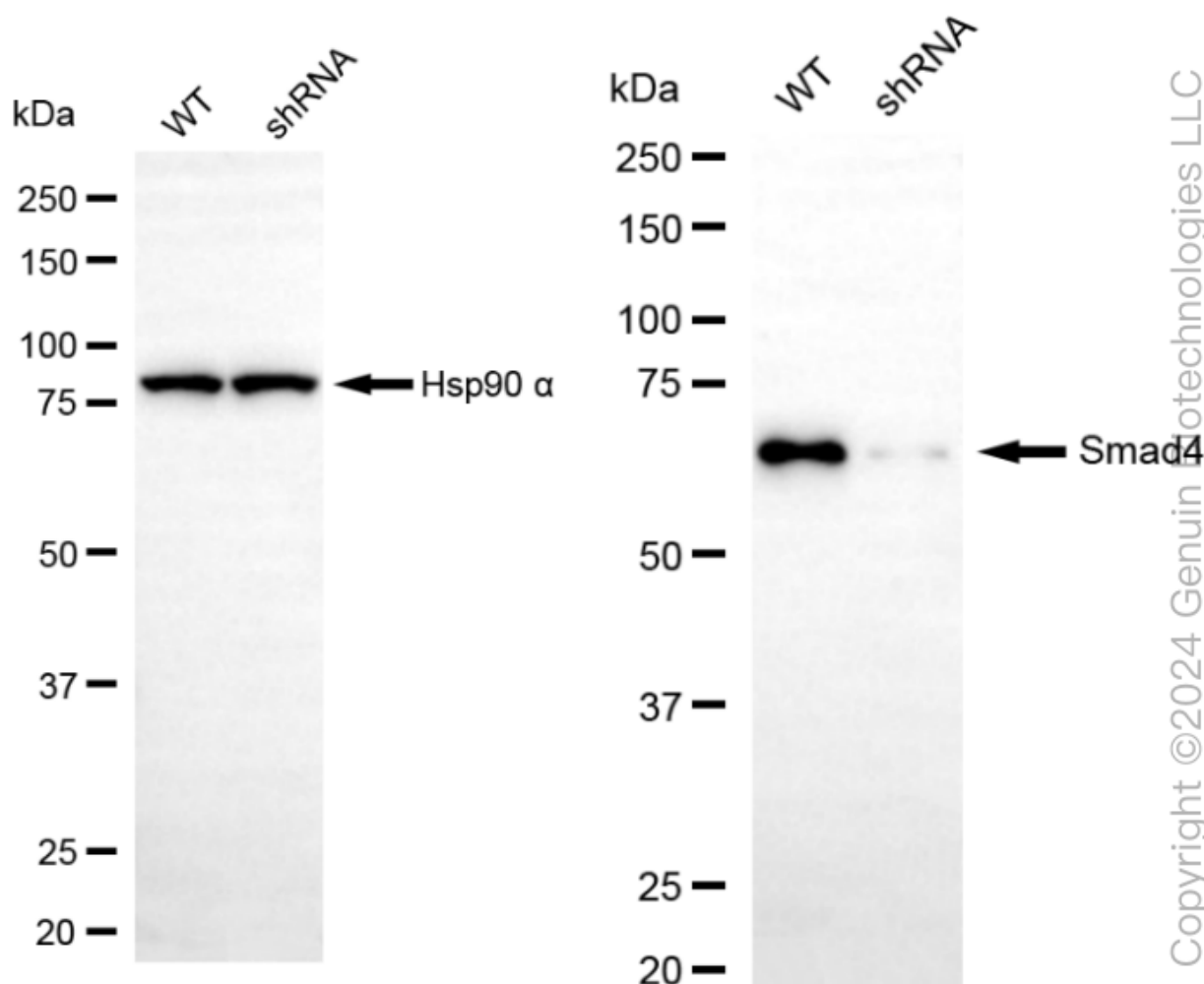
SUPPORT

SUPPORT@GENUINBIOTECH.COM
TEL: +1-540-855-7041

ORDERS

SALES@GENUINBIOTECH.COM
FAX: +1-540-855-7041

WWW.GENUINBIOTECH.COM



Western blotting analysis using anti-Smad4 antibody (Cat#67514). Smad4 expression in wild type (WT) and Smad4 shRNA knockdown (KD) HT-1080 cells with 30 µg of total cell lysates. Hsp90 α serves as a loading control. The blot was incubated with anti-Smad4 antibody (Cat#67514,1:5,000) and HRP-conjugated goat anti rabbit secondary antibody (Cat#201,1:50,000) respectively. Image was developed using FeQ™ ECL Substrate Kit (Cat#226).