

# KD-Validated Anti-Bcl-2 Recombinant Rabbit Monoclonal Antibody



**Catalog #: 68142**

## Aliases

BCL2 Apoptosis Regulator; PPP1R50; Bcl-2; Protein Phosphatase 1, Regulatory Subunit 50; Apoptosis Regulator Bcl-2; B-Cell CLL/Lymphoma 2; BCL2, Apoptosis Regulator

## Background

Gene Name: BCL2

NCBI Gene Entry: [596](#)

UniProt Entry: [P10415](#)

## Application Information

Molecular Weight: Predicted, 26 kDa, observed, 26 kDa

Clonality: Rabbit monoclonal antibody

Clone ID: 23GB675

Species Reactivity: Human

Applications Tested: Western blotting (WB), flow cytometry (FCM), immunocytochemistry (IC)

## Immunogen

A synthesized peptide derived from human Bcl-2

## Isotype

Rabbit IgG

## Storage Buffer

Supplied in PBS (pH 7.4) containing 50% glycerol, and 0.02% sodium azide.

## Storage

Store at -20 °C for one year.

## Recommended Dilutions

Western Blotting (WB): 1:1,000-1:5,000

Flow Cytometry (FCM): 1:2,000

Immunocytochemistry (IC): 1:100-1:1,000

**Note:** This product is for research use only.

## Validation Data

---

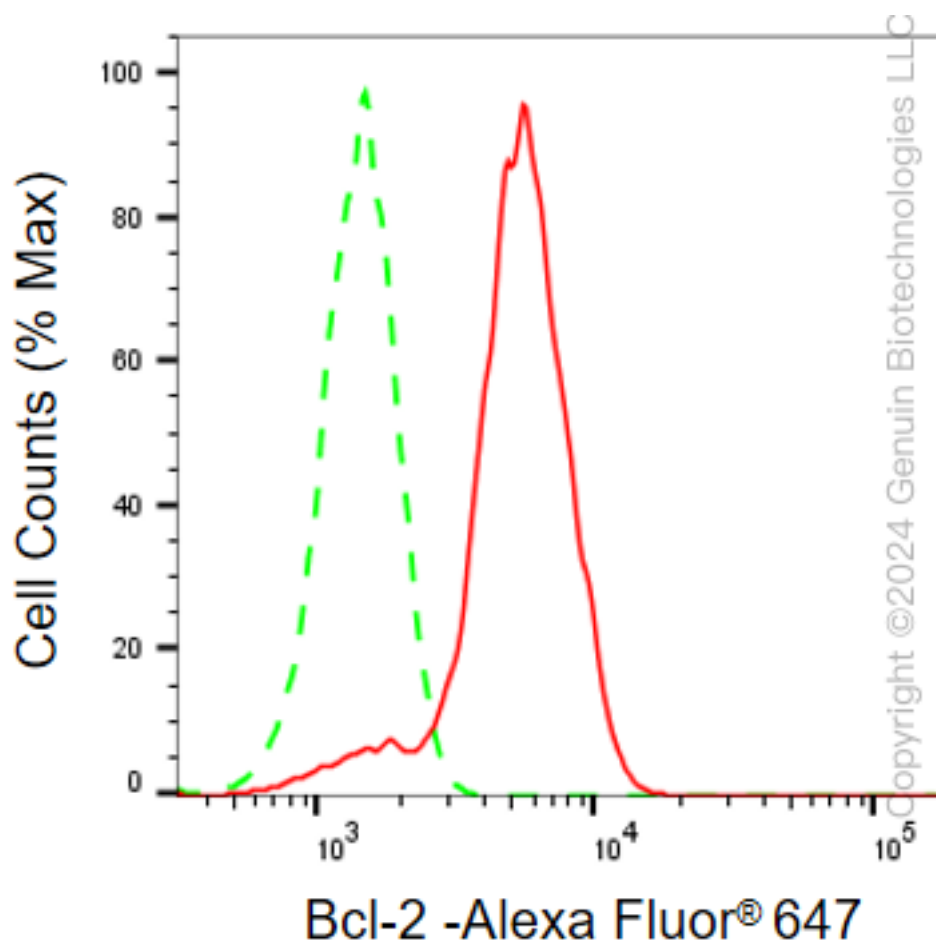
### SUPPORT

SUPPORT@GENUINBIOTECH.COM  
TEL: +1-540-855-7041

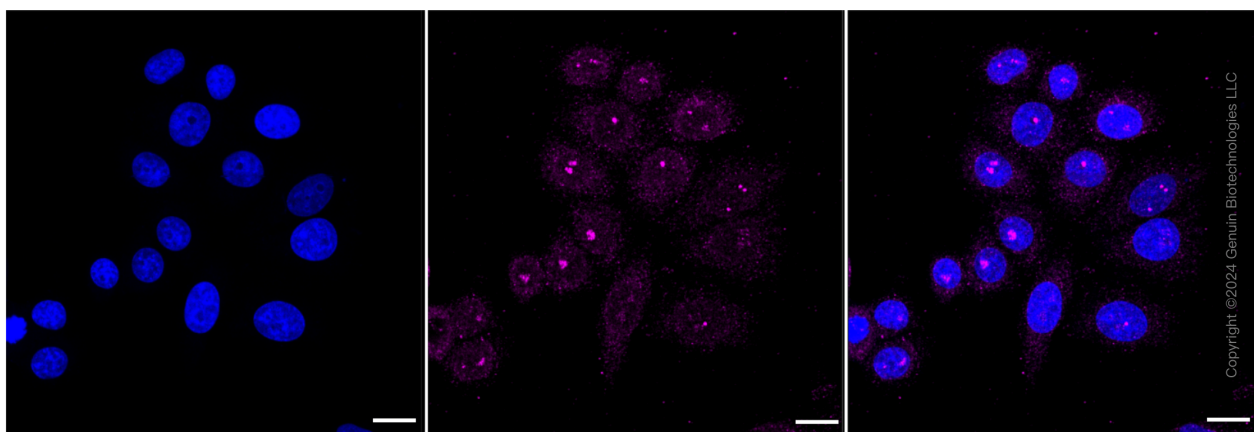
### ORDERS

SALES@GENUINBIOTECH.COM  
FAX: +1-540-855-7041

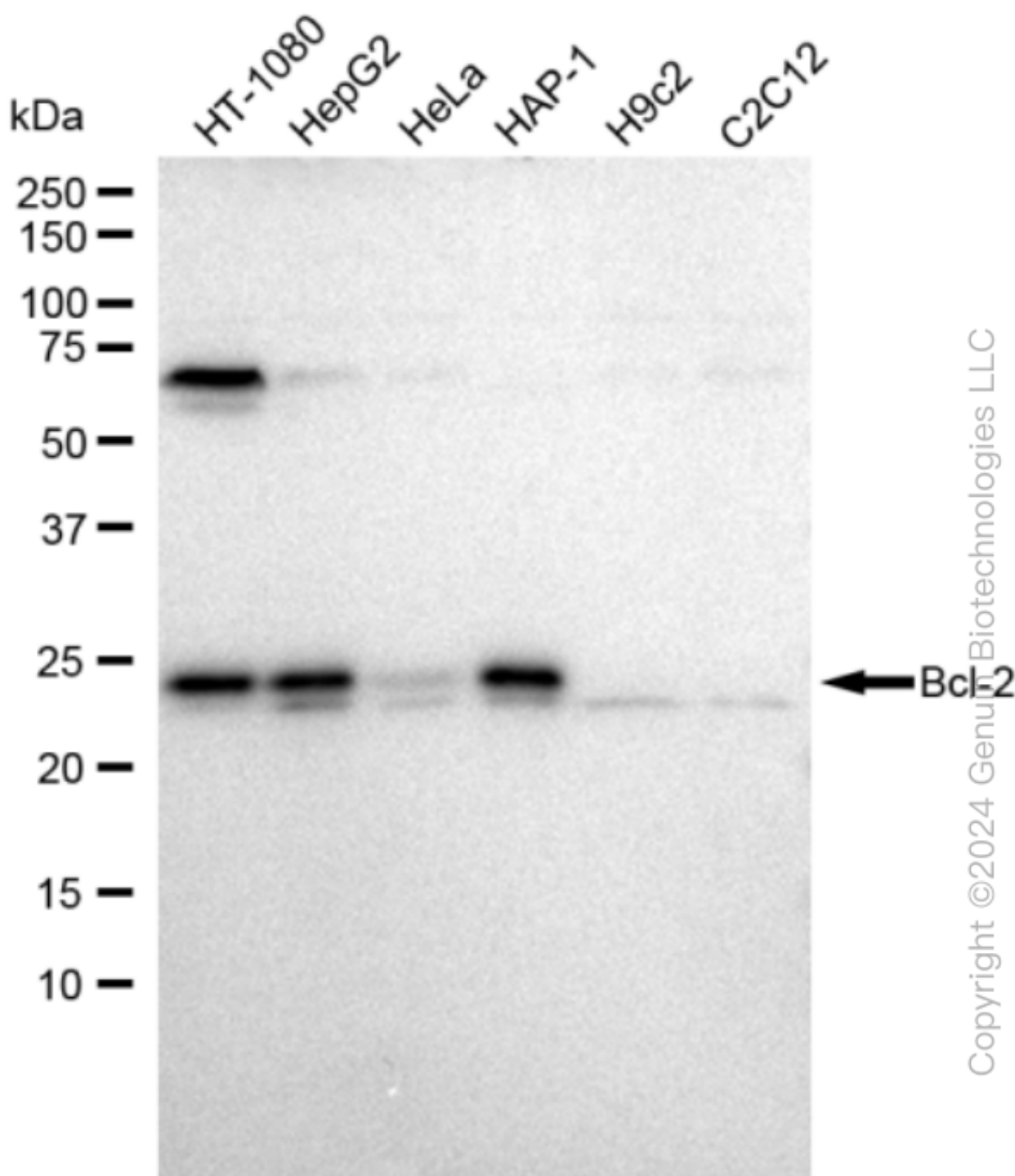
[WWW.GENUINBIOTECH.COM](http://WWW.GENUINBIOTECH.COM)



Flow cytometric analysis of Bcl-2 expression in HepG2 cells using anti-Bcl-2 antibody (Cat#68142, 1:2,000). Green, isotype control;red, Bcl-2.



Immunocytochemical staining of HepG2 cells with Bcl-2 antibody (Cat#68142, 1:1,000). Nuclei were stained blue with DAPI; Bcl-2 was stained magenta with Alexa Fluor® 647. Images were taken using Leica stellaris 5. Protein abundance based on laser Intensity and smart gain: Medium. Scale bar: 20  $\mu$ m.



Western blotting analysis using anti-Bcl 2 antibody (Cat#68142). Total cell lysates (30 µg) from various cell lines were loaded and separated by SDS-PAGE. The blot was incubated with anti-Bcl 2 antibody (Cat#68142, 1:5,000) and HRP-conjugated goat anti-rabbit secondary antibody (Cat#201, 1:20,000) respectively. Image was developed using FeQ™ ECL Substrate Kit (Cat#226).

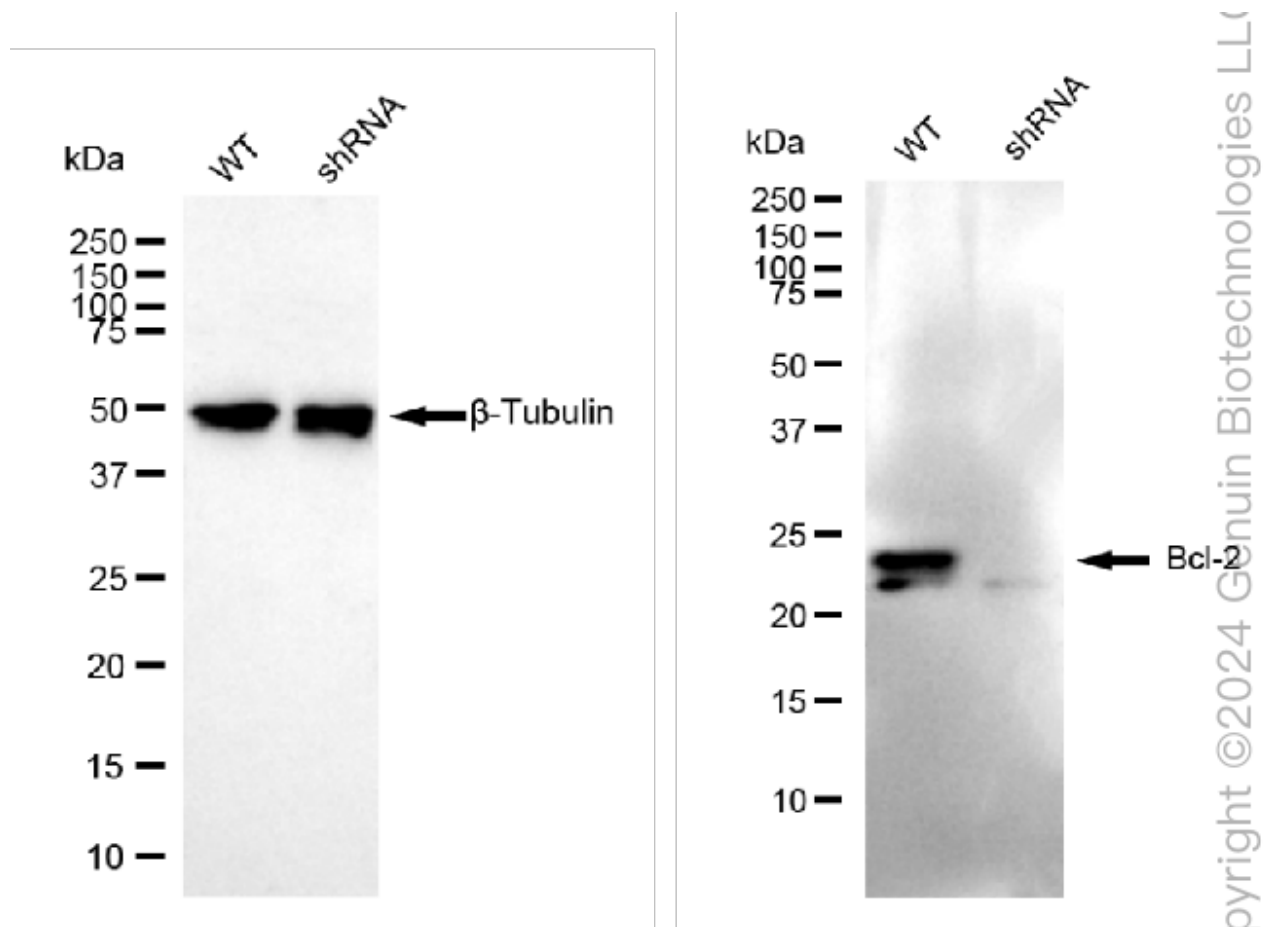
**SUPPORT**

SUPPORT@GENUINBIOTECH.COM  
TEL: +1-540-855-7041

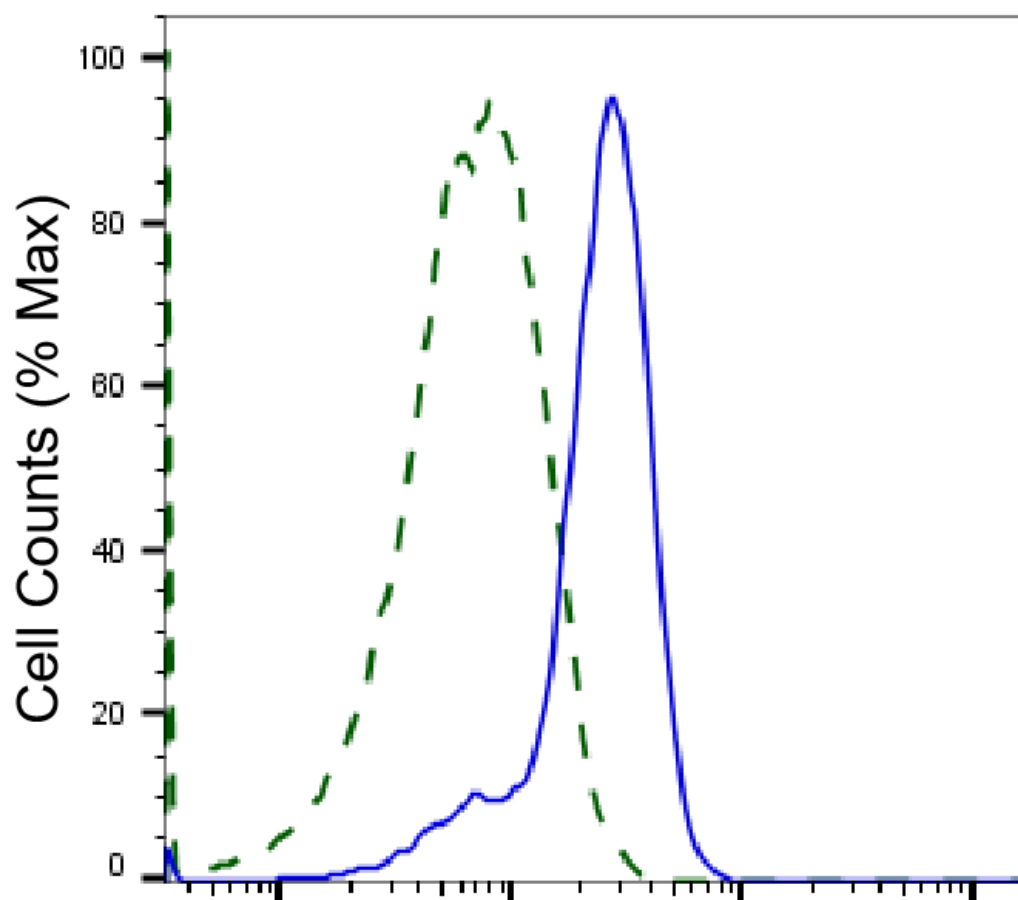
**ORDERS**

SALES@GENUINBIOTECH.COM  
FAX: +1-540-855-7041

**WWW.GENUINBIOTECH.COM**



Western blotting analysis using anti-Bcl-2 antibody (Cat#68142). Bcl-2 expression in wild type (WT) and Bcl-2 shRNA knockdown (KD) HeLa cells with 20  $\mu$ g of total cell lysates.  $\beta$ -Tubulin serves as a loading control. The blot was incubated with anti-Bcl-2 antibody (Cat#68142, 1:5,000) and HRP-conjugated goat anti-rabbit secondary antibody (Cat#201, 1:20,000) respectively. Image was developed using NaQ™ ECL Substrate Kit (Cat#716).



Copyright ©2025 Genuin Biotechnologies LLC

## Bcl-2-Alexa Fluor® 647

Validation of Bcl-2 knockdown using flow cytometry. Wild-type(WT, Blue) and knockdown(KD, Green) HeLa cells were stained with anti-Bcl-2 antibody (Cat#68142, 1:2,000) and analyzed using BD flow cytometer.