

KD-Validated Anti-ATP citrate lyase Recombinant Rabbit Monoclonal Antibody



Catalog #: 68149

Aliases

ACLY; ATP Citrate Lyase; ACL; ATPCL; CLATP; ATP-Citrate (Pro-S-)-Lyase; Citrate Cleavage Enzyme; ATP-Citrate Synthase; EC 2.3.3.8; ATP Citrate Synthase

Background

Gene Name: ACLY

NCBI Gene Entry: [47](#)

UniProt Entry: [P53396](#)

Application Information

Molecular Weight: Predicted, 121 kDa, observed, 121 kDa

Clonality: Rabbit monoclonal antibody

Clone ID: 23GB1620

Species Reactivity: Human, mouse, rat

Applications Tested: Western blotting (WB), flow cytometry (FCM), immunocytochemistry (IC)

Immunogen

A synthesized peptide derived from human ATP citrate lyase

Isotype

Rabbit IgG

Storage Buffer

Supplied in PBS (pH 7.4) containing 50% glycerol, and 0.02% sodium azide.

Storage

Store at -20 °C for one year.

Recommended Dilutions

Western Blotting (WB): 1:1,000-1:5,000

Flow Cytometry (FCM): 1:2,000

Immunocytochemistry (IC): 1:100-1:1,000

Note: This product is for research use only.

Validation Data

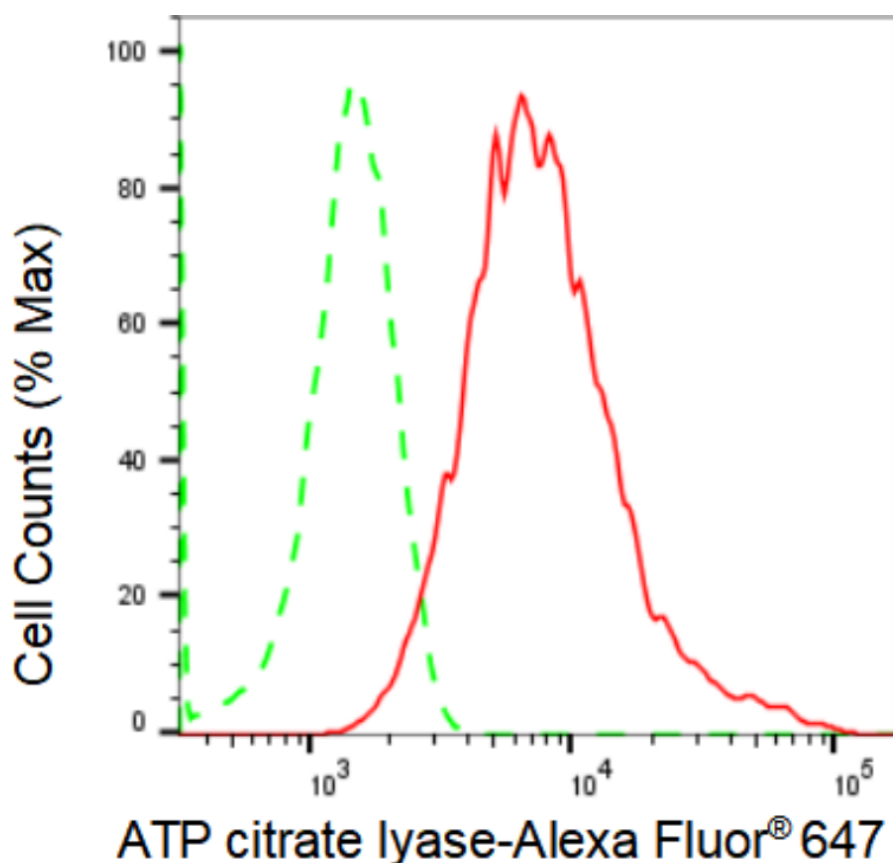
SUPPORT

SUPPORT@GENUINBIOTECH.COM
TEL: +1-540-855-7041

ORDERS

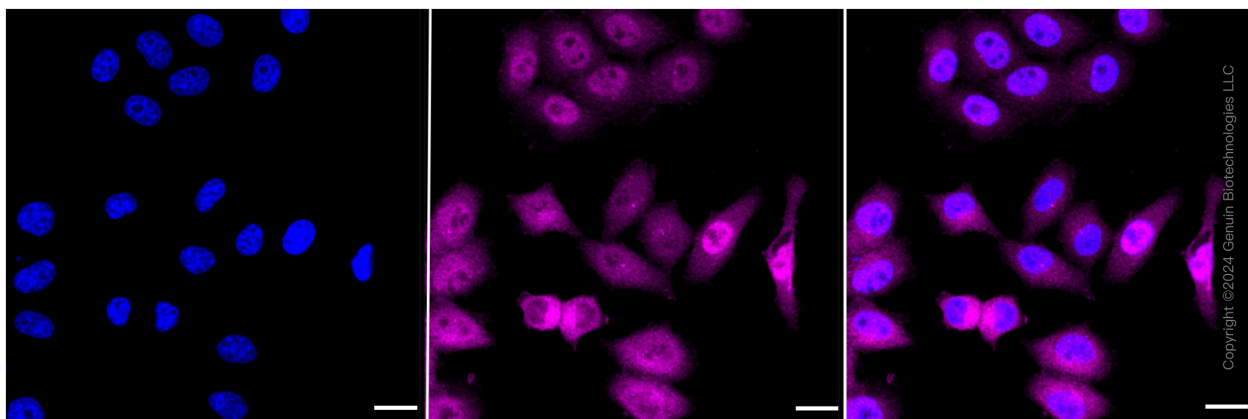
SALES@GENUINBIOTECH.COM
FAX: +1-540-855-7041

WWW.GENUINBIOTECH.COM



Copyright ©2024 Genuin Biotechnologies LLC

Flow cytometric analysis of ATP citrate lyase expression in HepG2 cells using ATP citrate lyase antibody (Cat#68149, 1:2,000). Green, isotype control; red, ATP citrate lyase.

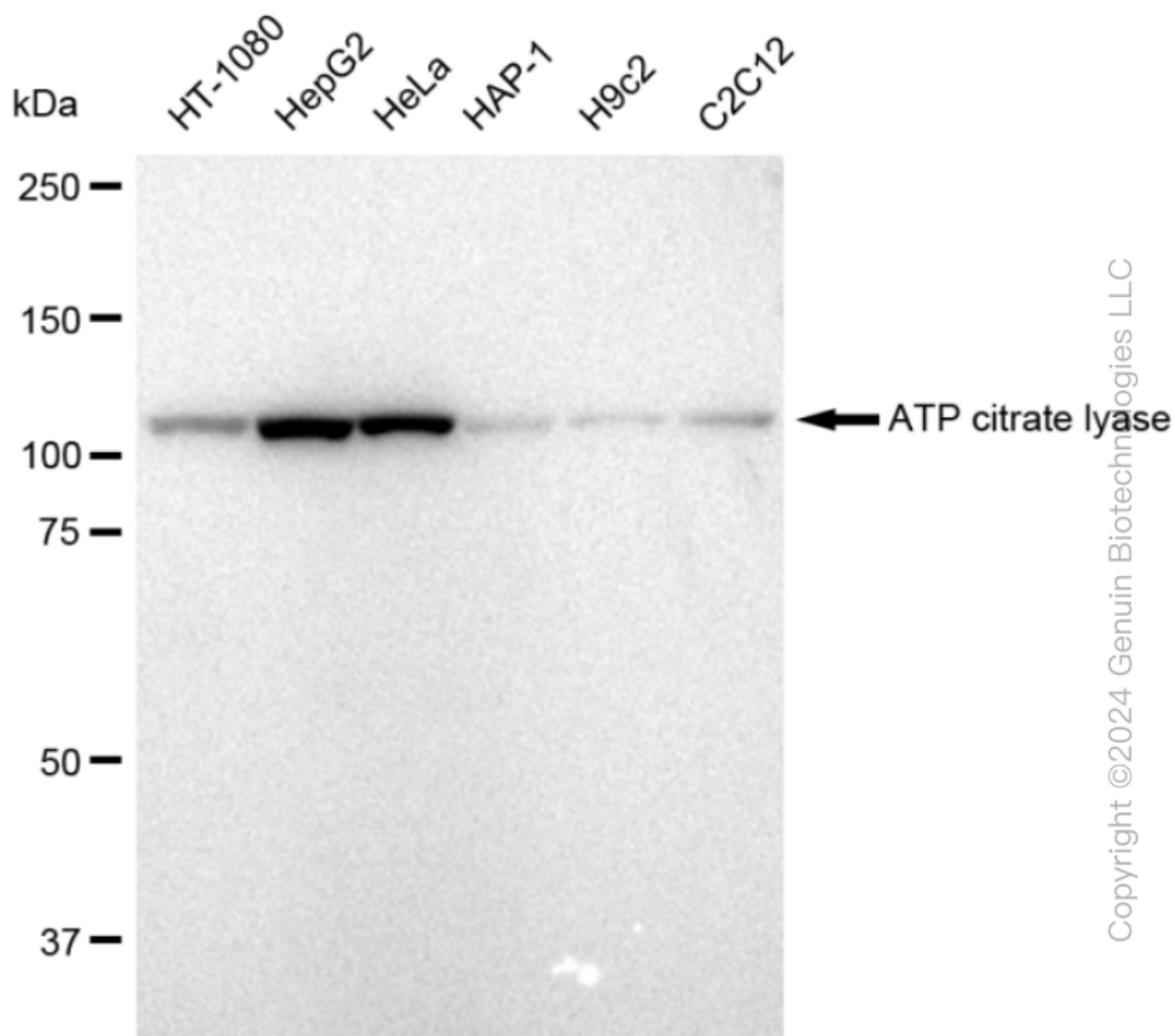


Copyright ©2024 Genuin Biotechnologies LLC

Immunocytochemical staining of HepG2 cells with ATP citrate lyase antibody (Cat#68149, 1:1,000). Nuclei were stained blue with DAPI; ATP citrate lyase was stained magenta with Alexa Fluor® 647. Images were taken using Leica stellaris 5. Protein abundance based on laser Intensity and smart gain: High. Scale bar, 20 μ m.

KD-Validated Anti-ATP citrate lyase Recombinant Rabbit Monoclonal Antibody

PAGE 3



Copyright ©2024 Genuin Biotechnologies LLC

Western blotting analysis using anti-ATP citrate lyase antibody (Cat#68149). Total cell lysates (30 μ g) from various cell lines were loaded and separated by SDS-PAGE. The blot was incubated with anti-ATP citrate lyase antibody (Cat#68149, 1:5,000) and HRP-conjugated goat anti-rabbit secondary antibody (Cat#201, 1:20,000) respectively. Image was developed using FeQ™ ECL Substrate Kit (Cat#226).

SUPPORT

SUPPORT@GENUINBIOTECH.COM
TEL: +1-540-855-7041

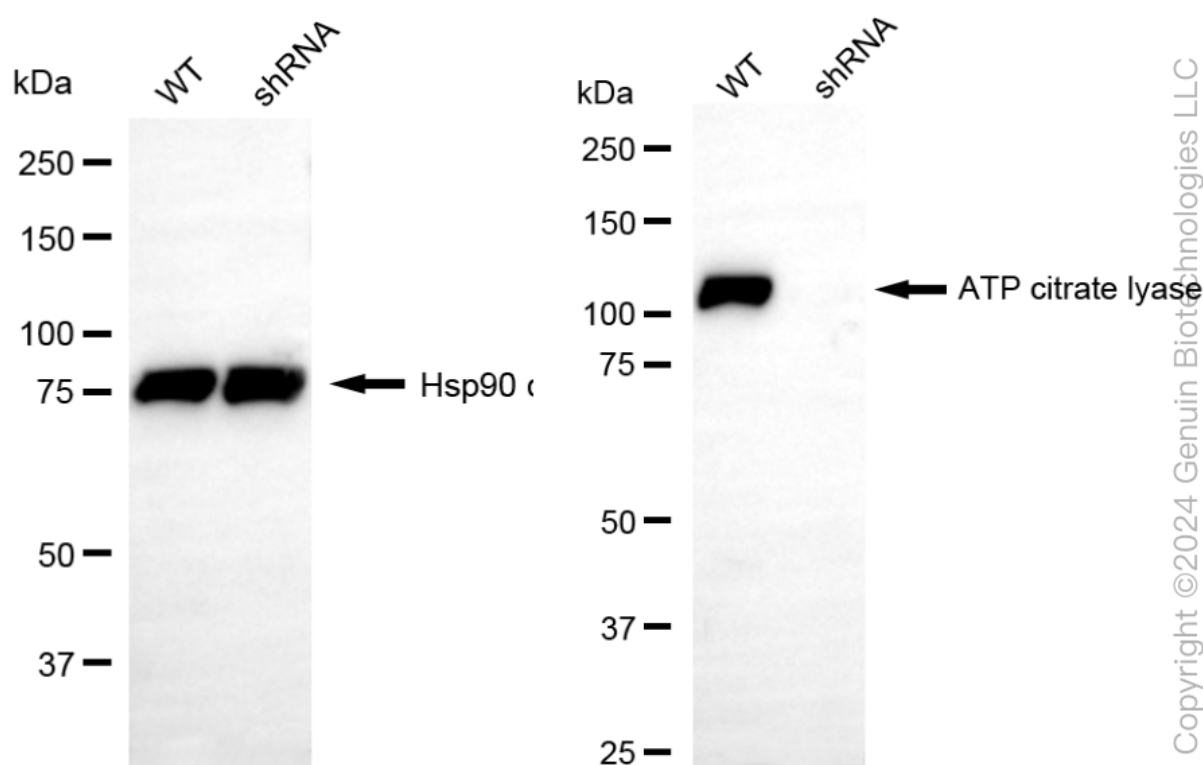
ORDERS

SALES@GENUINBIOTECH.COM
FAX: +1-540-855-7041

WWW.GENUINBIOTECH.COM

KD-Validated Anti-ATP citrate lyase Recombinant Rabbit Monoclonal Antibody

PAGE 4



Western blotting analysis using anti-ATP citrate lyase antibody (Cat#68149). ATP citrate lyase expression in wild type (WT) and ATP citrate lyase shRNA knockdown (KD) HeLa cells with 30 µg of total cell lysates. β -Tubulin serves as a loading control. The blot was incubated with anti-ATP citrate lyase antibody (Cat#68149, 1:5,000) and HRP-conjugated goat anti-rabbit secondary antibody (Cat#201, 1:20,000) respectively. Image was developed using FeQ™ ECL Substrate Kit (Cat#226).

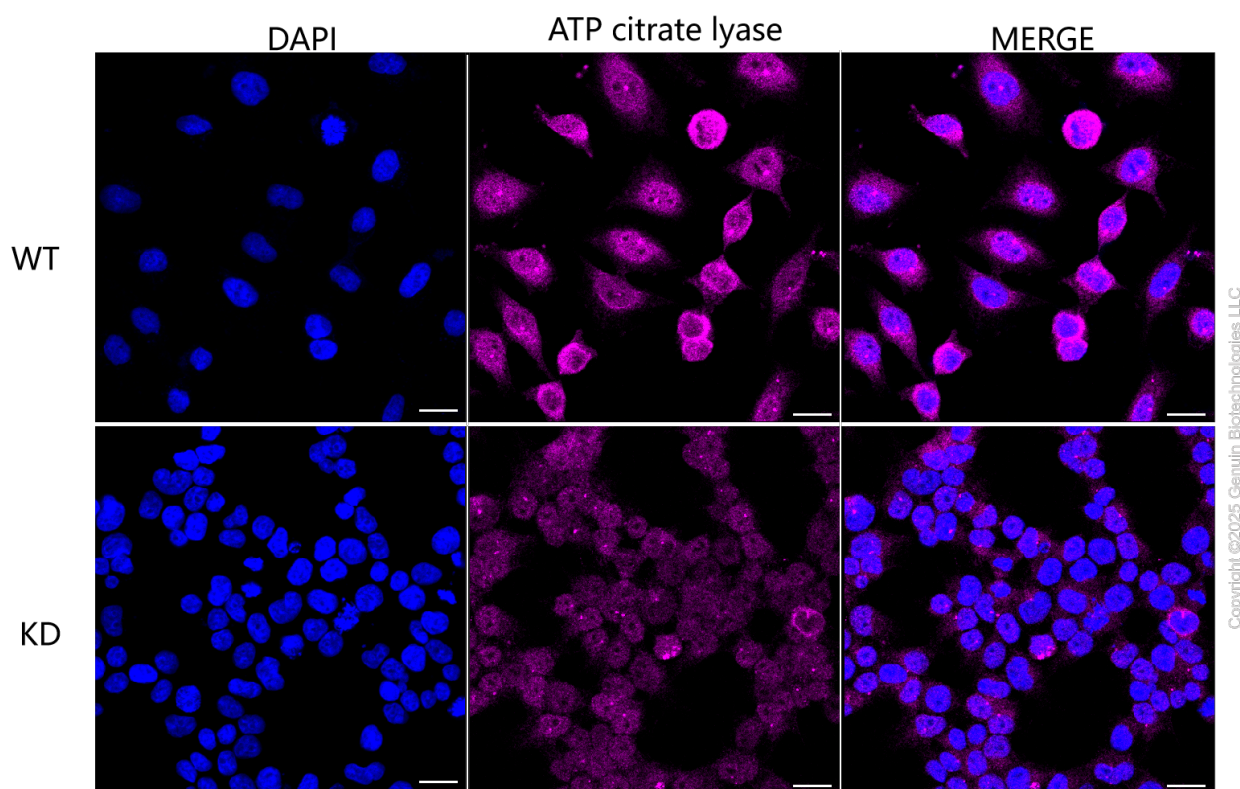
SUPPORT

SUPPORT@GENUINBIOTECH.COM
TEL: +1-540-855-7041

ORDERS

SALES@GENUINBIOTECH.COM
FAX: +1-540-855-7041

WWW.GENUINBIOTECH.COM



Immunocytochemical staining of HeLa cells using anti-ATP citrate lyase antibody (Cat#68149, 1:1,000), Top panel: wild-type (WT); Bottom panel: ATP citrate lyase shRNA knockdown (KD). Nuclei were stained blue with DAPI; ATP citrate lyase was stained magenta with Alexa Fluor® 647. Scale bar, 20 μ m. Permeabilization: Triton.