

# KD-Validated Anti-MCM7 Recombinant Rabbit Monoclonal Antibody



**Catalog #: 68157**

## Aliases

Minichromosome Maintenance Complex Component 7; CDC47; PPP1R104; MCM2; Protein Phosphatase 1, Regulatory Subunit 104; DNA Replication Licensing Factor MCM7; CDC47 Homolog; P1.1-MCM3; MCM7 Minichromosome Maintenance Deficient 7 (S. Cerevisiae); Minichromosome Maintenance Deficient (S. Cerevisiae) 7; Minichromosome Maintenance Deficient 7; Homolog Of S. Cerevisiae Cdc47; EC 3.6.4.12; P1CDC47; PNAS146; P85MCM

## Background

Gene Name: MCM7

NCBI Gene Entry: [4176](#)

UniProt Entry: [P33993](#)

## Application Information

Molecular Weight: Predicted, 81 kDa, observed, 81 kDa

Clonality: Rabbit monoclonal antibody

Clone ID: 23GB925

Species Reactivity: Human, rat

Applications Tested: Western blotting (WB), flow cytometry (FCM), immunocytochemistry (IC)

## Immunogen

A synthesized peptide derived from human MCM7

## Isotype

Rabbit IgG

## Storage Buffer

Supplied in PBS (pH 7.4) containing 50% glycerol, and 0.02% sodium azide.

## Storage

Store at -20 °C for one year.

## Recommended Dilutions

Western Blotting (WB): 1:1,000-1:5,000

Flow Cytometry (FCM): 1:2,000

Immunocytochemistry (IC): 1:100-1:1,000

---

### SUPPORT

SUPPORT@GENUINBIOTECH.COM  
TEL: +1-540-855-7041

### ORDERS

SALES@GENUINBIOTECH.COM  
FAX: +1-540-855-7041

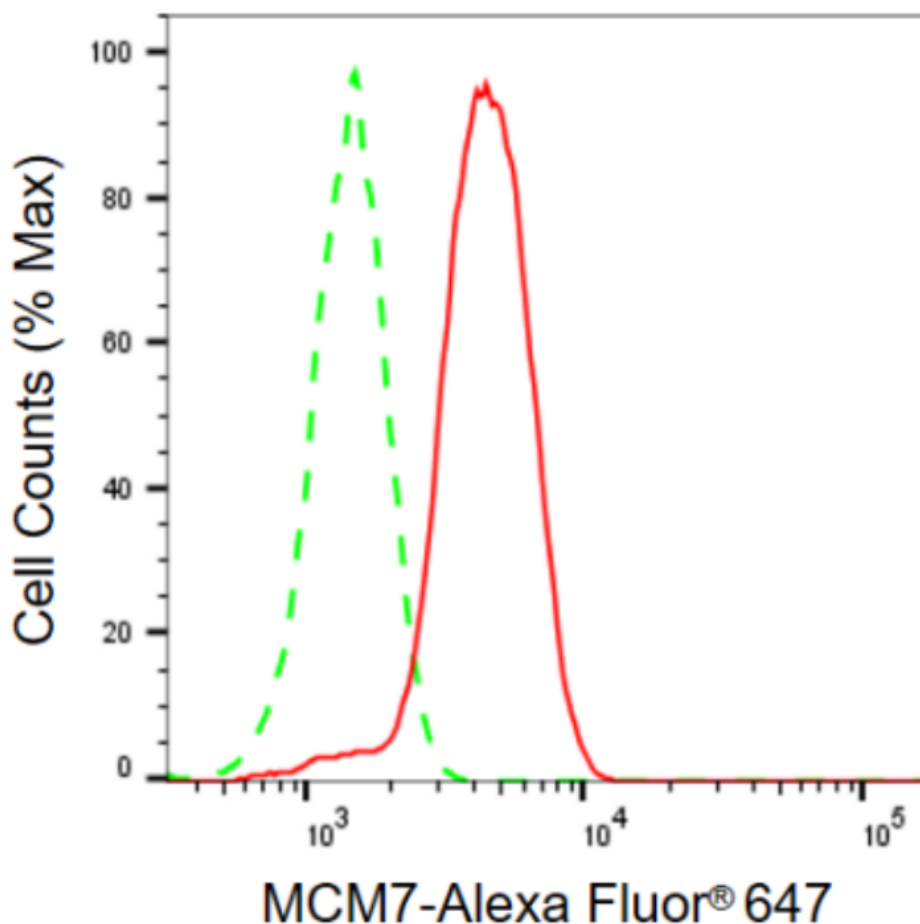
[WWW.GENUINBIOTECH.COM](http://WWW.GENUINBIOTECH.COM)

## KD-Validated Anti-MCM7 Recombinant Rabbit Monoclonal Antibody

PAGE 2

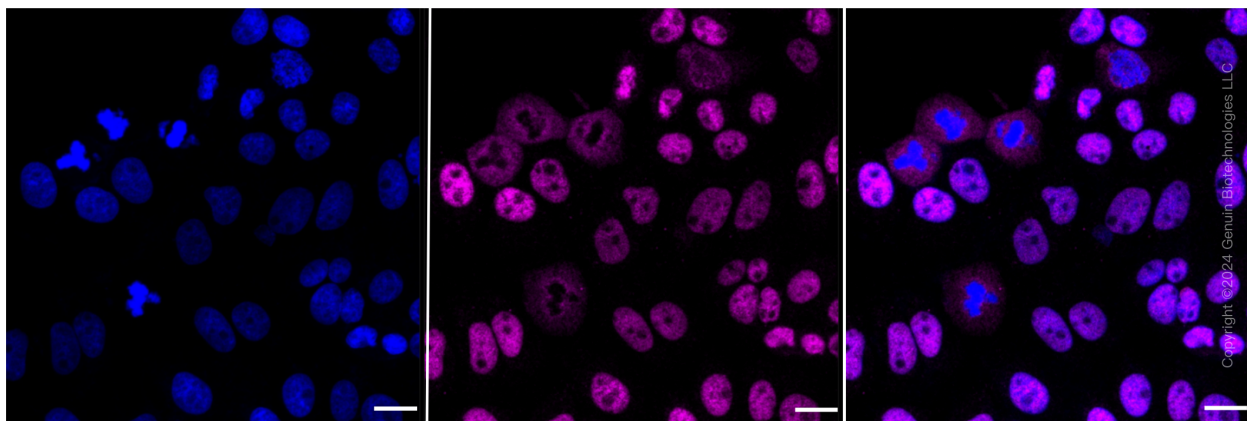
**Note:** This product is for research use only.

### Validation Data



Copyright ©2024 Genuin Biotechnologies LLC

Flow cytometric analysis of MCM7 expression in HepG2 cells using MCM7 antibody (Cat#68157, 1:2,000). Green, isotype control; red, MCM7.



Copyright ©2024 Genuin Biotechnologies LLC

Immunocytochemical staining of HepG2 cells with MCM7 antibody (Cat#68157, 1:1,000). Nuclei

#### SUPPORT

SUPPORT@GENUINBIOTECH.COM  
TEL: +1-540-855-7041

#### ORDERS

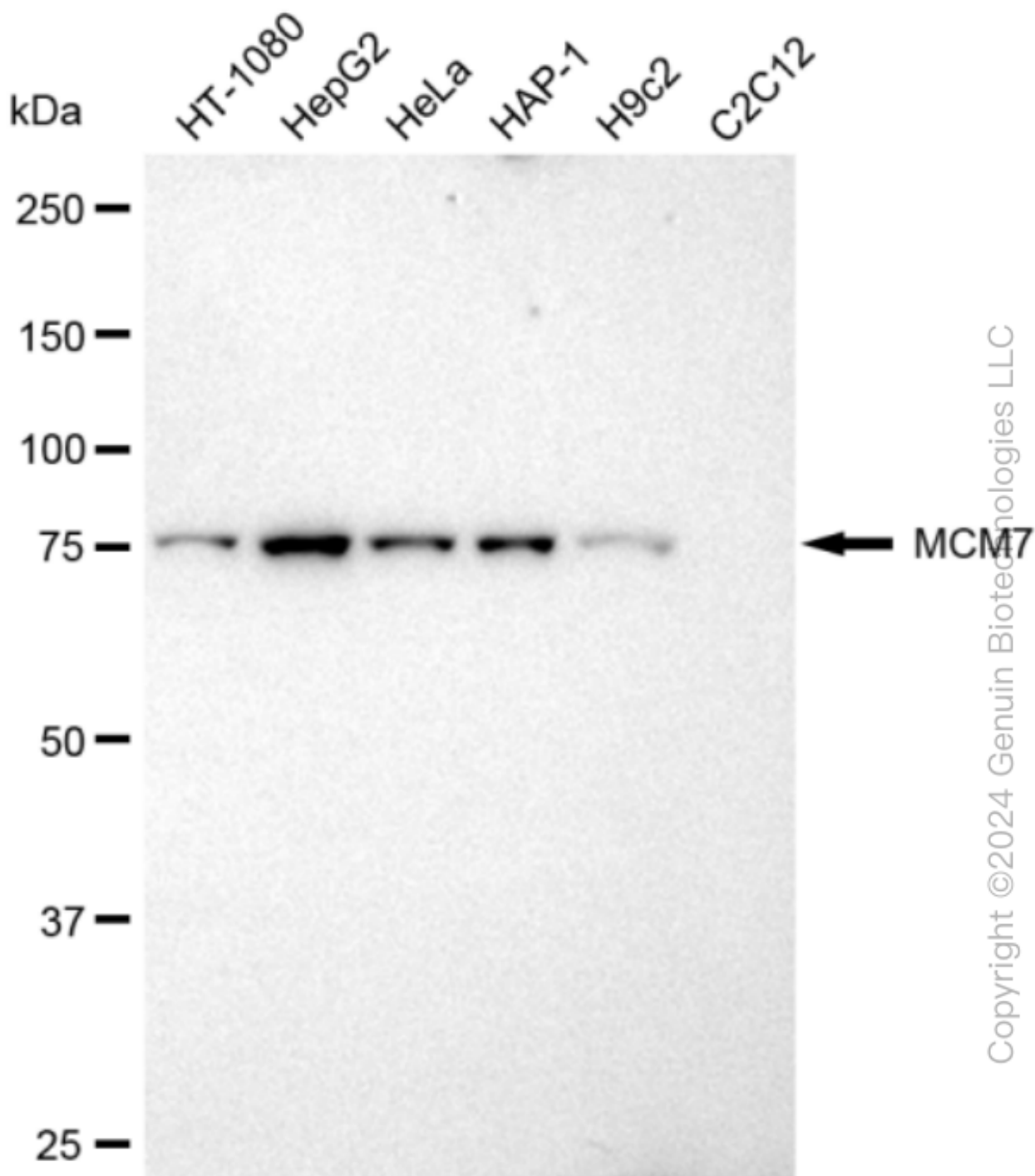
SALES@GENUINBIOTECH.COM  
FAX: +1-540-855-7041

WWW.GENUINBIOTECH.COM

## KD-Validated Anti-MCM7 Recombinant Rabbit Monoclonal Antibody

PAGE 3

were stained blue with DAPI; MCM7 was stained magenta with Alexa Fluor® 647. Images were taken using Leica stellaris 5. Protein abundance based on laser Intensity and smart gain: Medium. Scale bar: 20 µm.



Western blotting analysis using anti-MCM7 antibody (Cat#68157). Total cell lysates (30 µg) from various cell lines were loaded and separated by SDS-PAGE. The blot was incubated with anti-MCM7 antibody (Cat#68157, 1:5,000) and HRP-conjugated goat anti-rabbit secondary antibody

### SUPPORT

SUPPORT@GENUINBIOTECH.COM  
TEL: +1-540-855-7041

### ORDERS

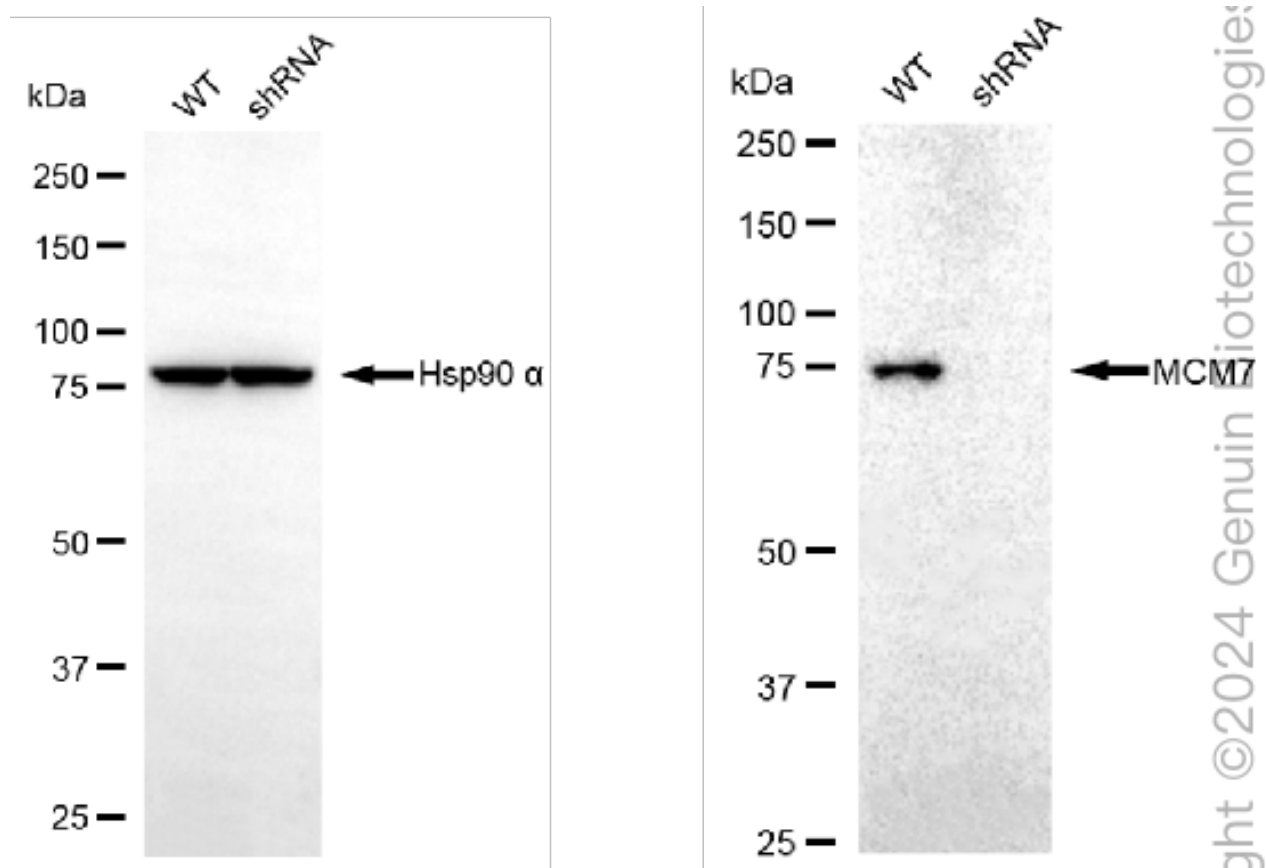
SALES@GENUINBIOTECH.COM  
FAX: +1-540-855-7041

[WWW.GENUINBIOTECH.COM](http://WWW.GENUINBIOTECH.COM)

## KD-Validated Anti-MCM7 Recombinant Rabbit Monoclonal Antibody

PAGE 4

(Cat#201, 1:50,000) respectively. Image was developed using FeQ™ ECL Substrate Kit (Cat#226).



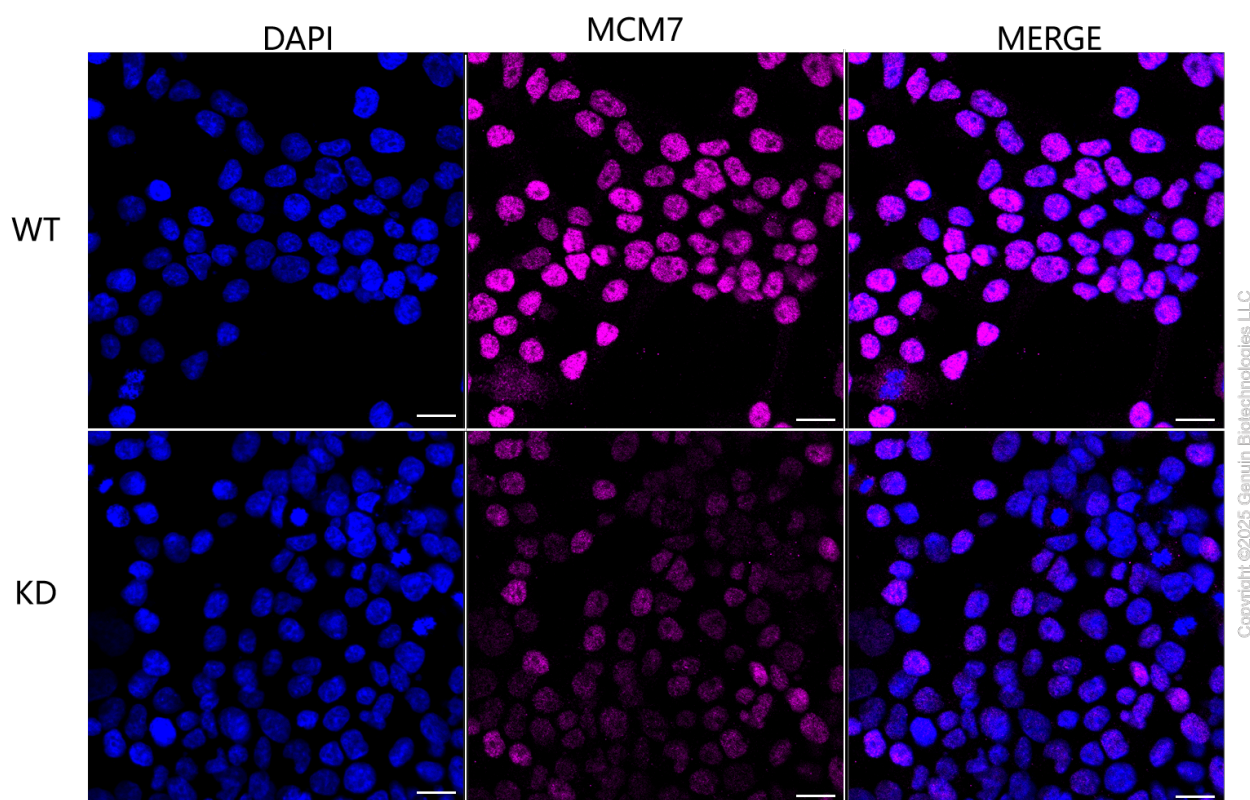
### SUPPORT

SUPPORT@GENUINBIOTECH.COM  
TEL: +1-540-855-7041

### ORDERS

SALES@GENUINBIOTECH.COM  
FAX: +1-540-855-7041

WWW.GENUINBIOTECH.COM



Immunocytochemical staining of HeLa cells using anti-MCM7 antibody (Cat#68157, 1:1,000), Top panel: wild-type (WT); Bottom panel: MCM7 shRNA knockdown (KD). Nuclei were stained blue with DAPI; MCM7 was stained magenta with Alexa Fluor® 647. Scale bar, 20  $\mu$ m. Permeabilization: Triton.