

KD-Validated Anti-PRKRA Recombinant Rabbit Monoclonal Antibody



Catalog #: 68240

Aliases

PRKRA; Protein Activator Of Interferon Induced Protein Kinase EIF2AK2; PACT; RAX; Protein Activator Of The Interferon-Induced Protein Kinase; PKR-Associated Protein X ; HSD14 ; DYT16; Interferon-Inducible Double-Stranded RNA-Dependent Protein Kinase Activator A; Protein Kinase, Interferon-Inducible Double-Stranded RNA-Dependent Activator; PKR-Associating Protein X; Protein Kinase, Interferon-Inducible Double Stranded RNA Dependent Activator

Background

Gene Name: PRKRA

NCBI Gene Entry: [8575](#)

UniProt Entry: [O75569](#)

Application Information

Molecular Weight: Predicted, 34 kDa, observed, 34 kDa

Clonality: Rabbit monoclonal antibody

Clone ID: 23GB2340

Species Reactivity: Human, mouse, rat

Applications Tested: Western blotting (WB), flow cytometry (FCM), immunocytochemistry (IC)

Immunogen

A synthesized peptide derived from human PRKRA

Isotype

Rabbit IgG

Storage Buffer

Supplied in PBS (pH 7.4) containing 50% glycerol, and 0.02% sodium azide.

Storage

Store at -20 °C for one year.

Recommended Dilutions

Western Blotting (WB): 1:1,000-1:5,000

Flow Cytometry (FCM): 1:2,000

Immunocytochemistry (IC): 1:100-1:1,000

SUPPORT

SUPPORT@GENUINBIOTECH.COM
TEL: +1-540-855-7041

ORDERS

SALES@GENUINBIOTECH.COM
FAX: +1-540-855-7041

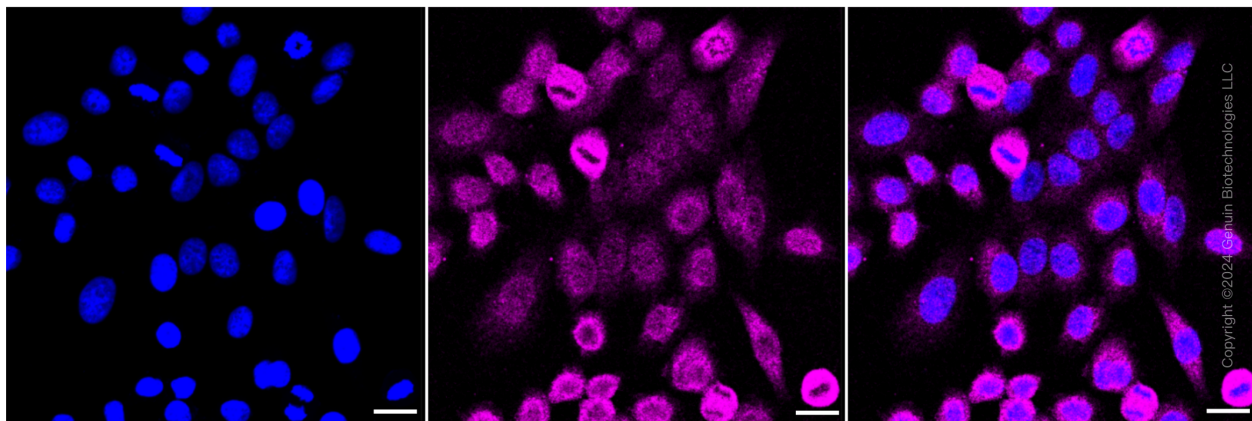
WWW.GENUINBIOTECH.COM

KD-Validated Anti-PRKRA Recombinant Rabbit Monoclonal Antibody

PAGE 2

Note: This product is for research use only.

Validation Data



Immunocytochemical staining of HepG2 cells with PRKRA antibody (Cat#68240, 1:1,000). Nuclei were stained blue with DAPI; PRKRA was stained magenta with Alexa Fluor® 647. Images were taken using Leica stellaris 5. Protein abundance based on laser Intensity and smart gain: Medium. Scale bar: 20 μ m.

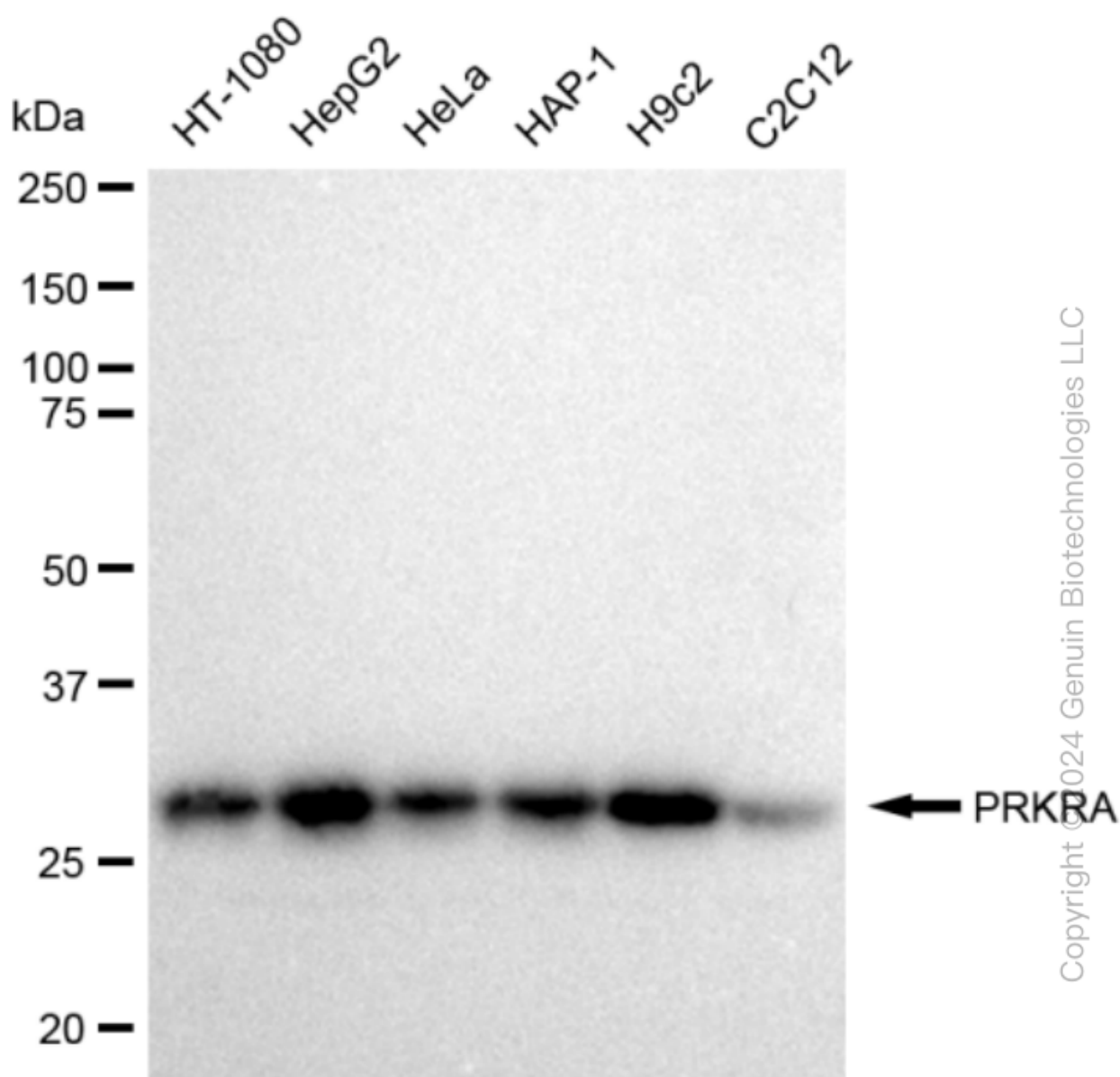
SUPPORT

SUPPORT@GENUINBIOTECH.COM
TEL: +1-540-855-7041

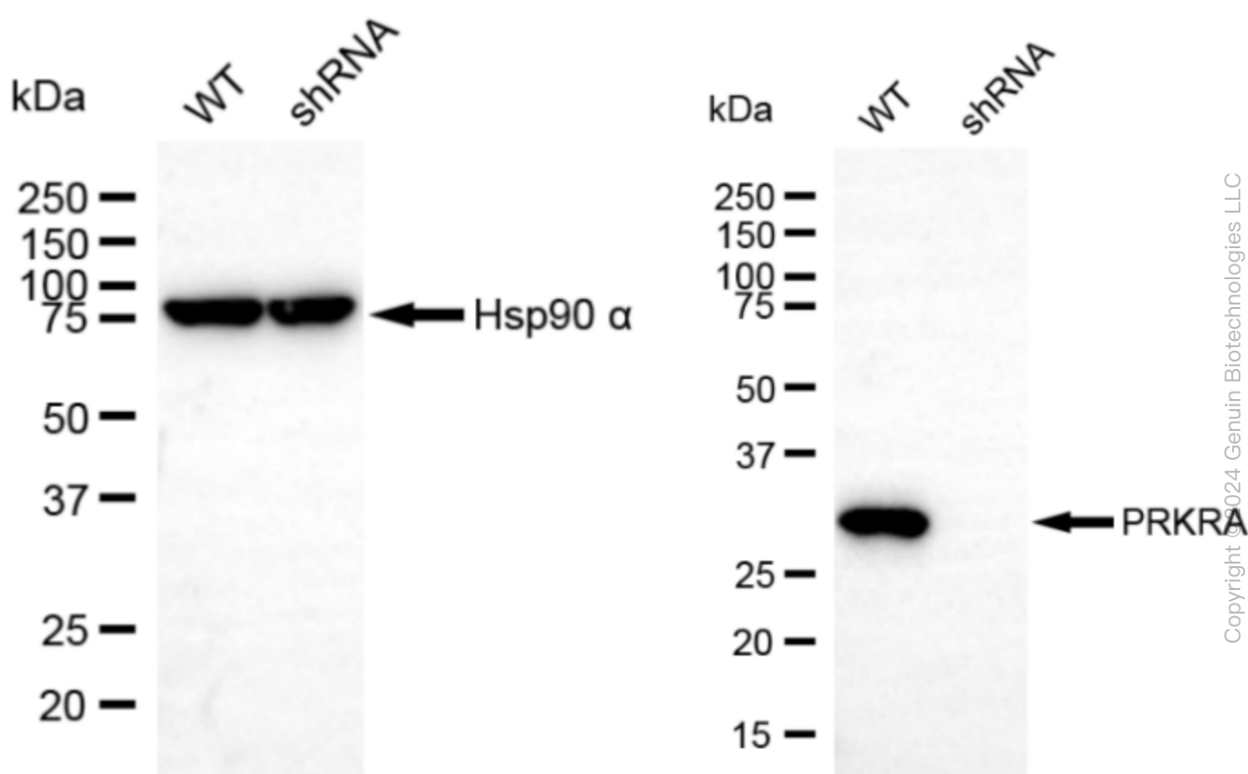
ORDERS

SALES@GENUINBIOTECH.COM
FAX: +1-540-855-7041

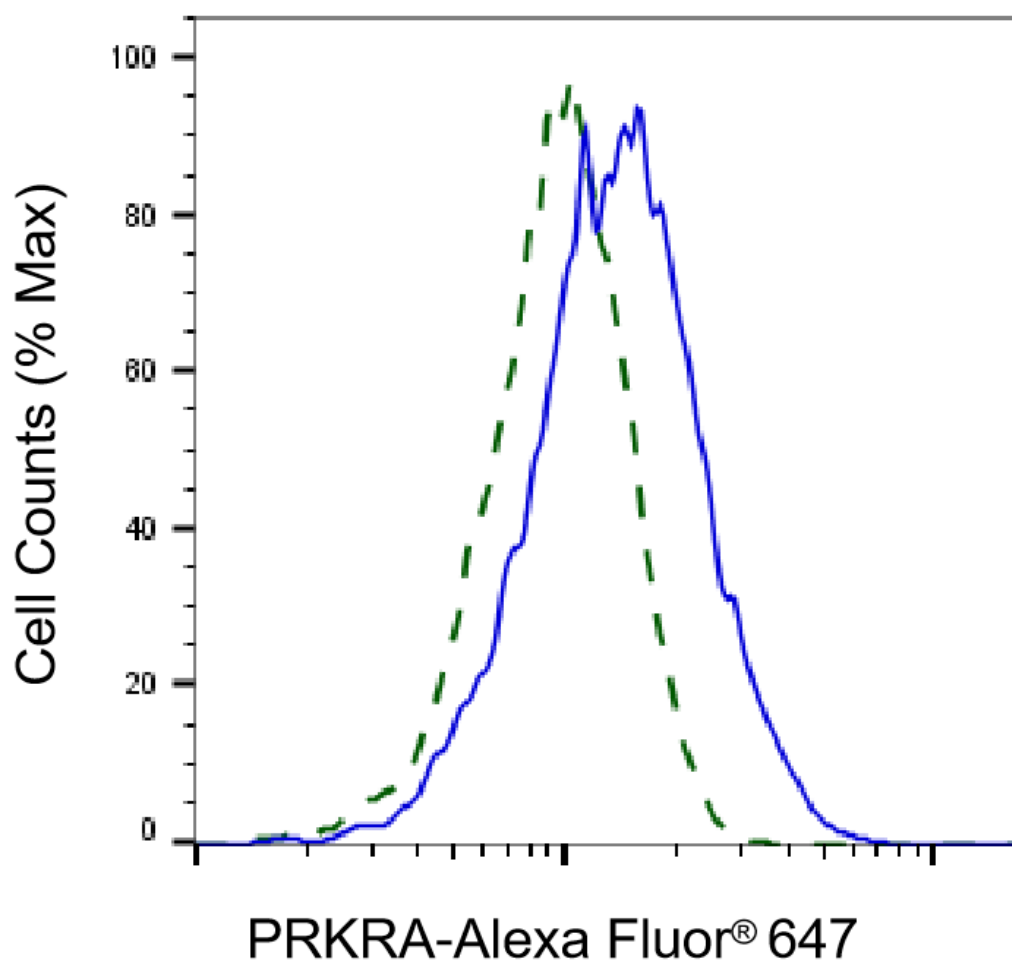
WWW.GENUINBIOTECH.COM



Western blotting analysis using anti-PRKRA antibody (Cat#68240). Total cell lysates (30 μ g) from various cell lines were loaded and separated by SDS-PAGE. The blot was incubated with anti-PRKRA antibody (Cat#68240, 1:5,000) and HRP-conjugated goat anti-rabbit secondary antibody (Cat#201, 1:20,000) respectively. Image was developed using FeQ™ ECL Substrate Kit (Cat#226).

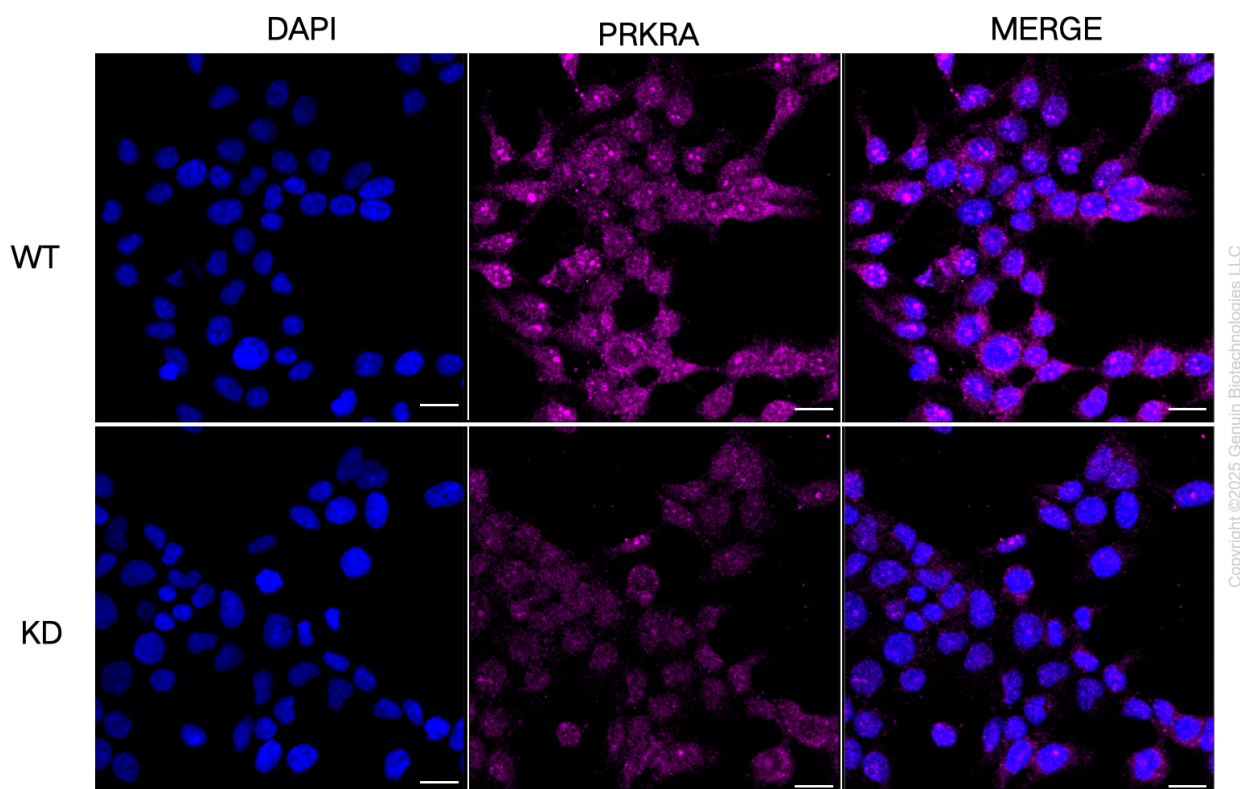


Western blotting analysis using anti-PRKRA antibody (Cat#68240). PRKRA expression in wild type (WT) and PRKRA shRNA knockdown (KD) HeLa cells with 30 μ g of total cell lysates. β -Tubulin serves as a loading control. The blot was incubated with anti-PRKRA antibody (Cat#68240, 1:5,000) and HRP-conjugated goat anti-rabbit secondary antibody (Cat#201, 1:20,000) respectively. Image was developed using FeQ™ ECL Substrate Kit (Cat#226).



Copyright ©2025 Genuin Biotechnologies LLC

Validation of PRKRA knockdown using flow cytometry. Wild-type(WT, Blue) and knockdown(KD, Green) HeLa cells were stained with anti-PRKRA antibody (Cat#68240, 1:2,000) and analyzed using BD flow cytometer.



Immunocytochemical staining of HeLa cells using anti-PRKRA antibody (Cat#68240, 1:1,000), Top panel: wild-type (WT); Bottom panel: PRKRA shRNA knockdown (KD). Nuclei were stained blue with DAPI; PRKRA was stained magenta with Alexa Fluor® 647. Scale bar, 20 μ m.