

KD-Validated Anti-EHMT2 Recombinant Rabbit Monoclonal Antibody



Catalog #: 68352

Aliases

Euchromatic Histone Lysine Methyltransferase 2; KMT1C; G9A; C6orf30; BAT8; Euchromatic Histone-Lysine N-Methyltransferase 2; Histone-Lysine N-Methyltransferase EHMT2; Histone H3-K9 Methyltransferase 3; HLA-B Associated Transcript 8; Lysine N-Methyltransferase 1C; H3-K9-HMTase 3; Em:AF134726.3; NG36/G9a; NG36; Histone-Lysine N-Methyltransferase, H3 Lysine-9 Specific 3; Chromosome 6 Open Reading Frame 30; Ankyrin Repeat-Containing Protein; G9A Histone Methyltransferase; HLA-B-Associated Transcript 8; EC 2.1.1.367; Protein G9a; EC 2.1.1.-; GAT8

Background

Gene Name: EHMT2

NCBI Gene Entry: [10919](#)

UniProt Entry: [Q96KQ7](#)

Application Information

Molecular Weight: Predicted, 132 kDa, observed, 160-170 kDa

Clonality: Rabbit monoclonal antibody

Clone ID: 23GB825

Species Reactivity: Human, mouse, rat

Applications Tested: Western blotting (WB), flow cytometry (FCM), immunocytochemistry (IC), Immunohistochemistry (IHC)

Immunogen

A synthesized peptide derived from human EHMT2

Isotype

Rabbit IgG

Storage Buffer

Supplied in PBS (pH 7.4) containing 50% glycerol, and 0.02% sodium azide.

Storage

Store at -20 °C for one year.

Recommended Dilutions

Western Blotting (WB): 1:1,000-1:5,000

SUPPORT

SUPPORT@GENUINBIOTECH.COM
TEL: +1-540-855-7041

ORDERS

SALES@GENUINBIOTECH.COM
FAX: +1-540-855-7041

WWW.GENUINBIOTECH.COM

KD-Validated Anti-EHMT2 Recombinant Rabbit Monoclonal Antibody

PAGE 2

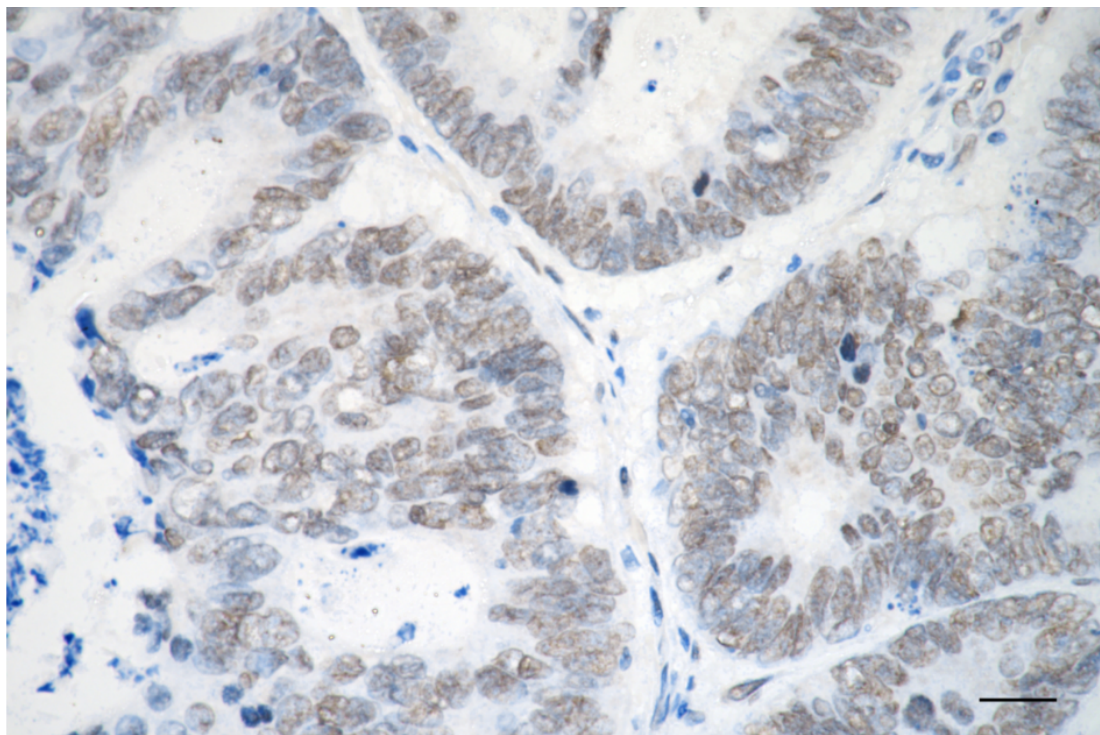
Flow Cytometry (FCM): 1:2,000

Immunocytochemistry (IC): 1:100-1:1,000

Immunohistochemistry (IHC): 1:100-1:200

Note: This product is for research use only.

Validation Data



Copyright ©2025 Genuin Biotechnologies LLC

Immunohistochemistry was performed on paraffin-embedded human sigmoid colon carcinoma using anti-EHMT2 antibody (Cat#68352, 1:200). Antigen retrieval was done in sodium citrate buffer (pH 6.0). DAB was used for detection, with hematoxylin counterstaining. Images were acquired using a Nikon Ci-L Plus microscope (40× objective). Scale bar: 25 μ m.

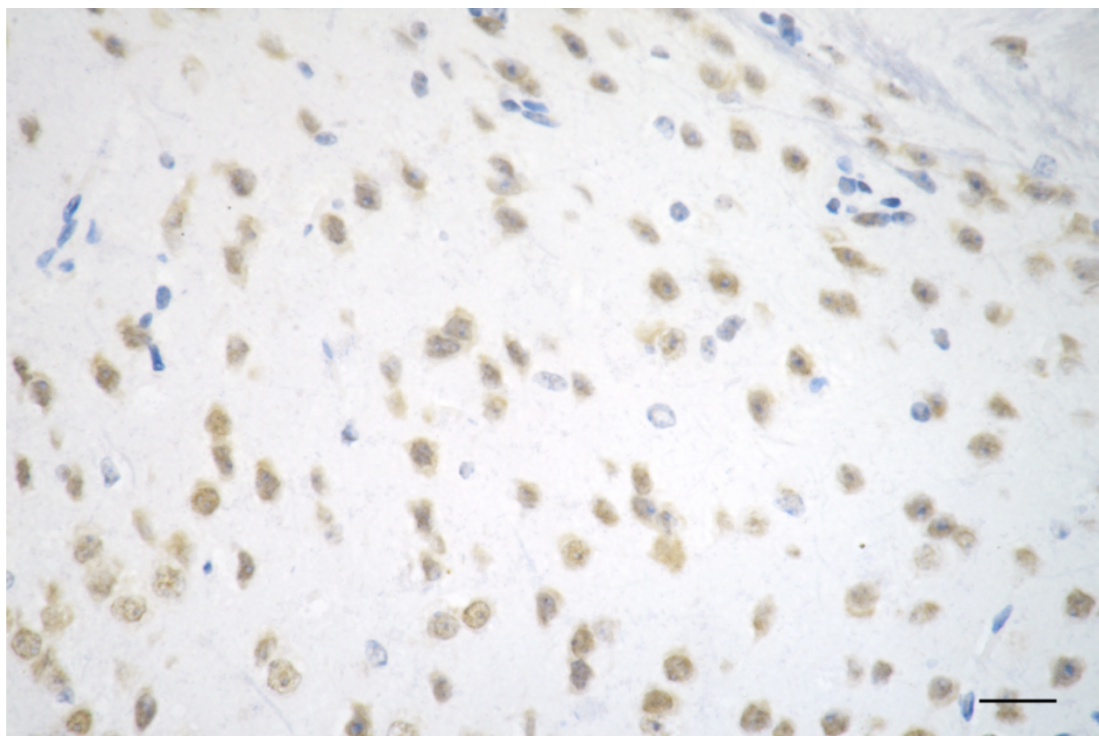
SUPPORT

SUPPORT@GENUINBIOTECH.COM
TEL: +1-540-855-7041

ORDERS

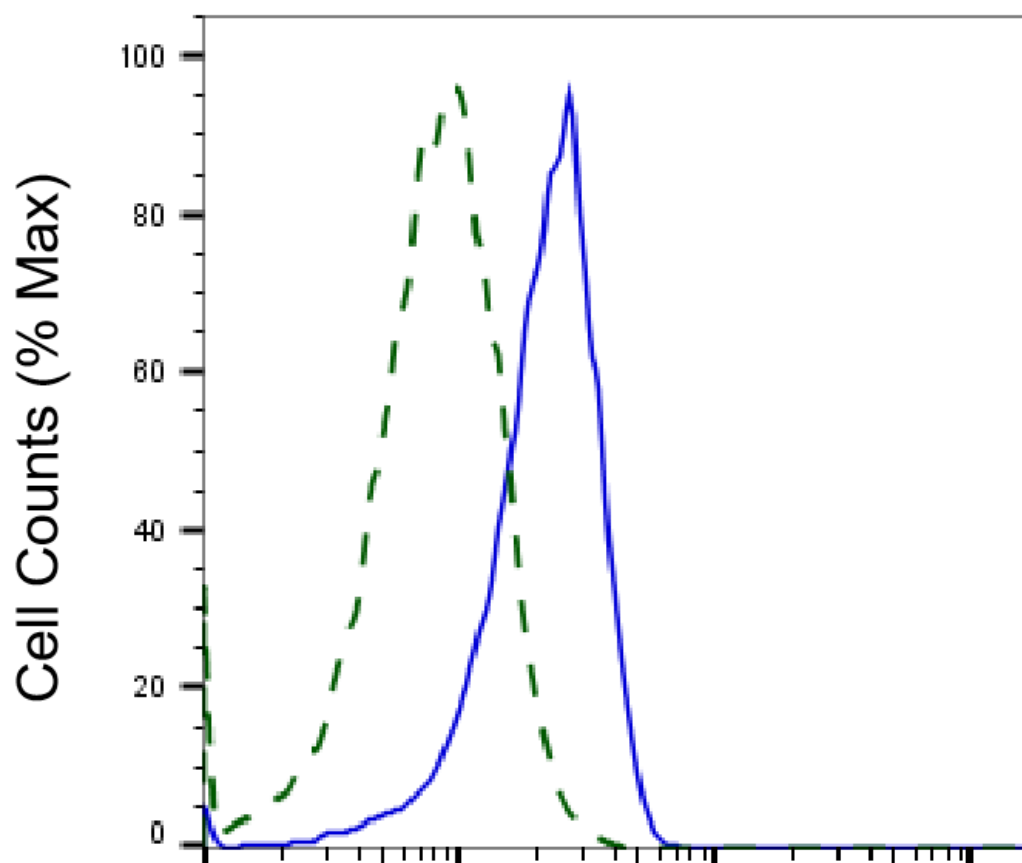
SALES@GENUINBIOTECH.COM
FAX: +1-540-855-7041

WWW.GENUINBIOTECH.COM



Copyright ©2025 Genuin Biotechnologies LLC

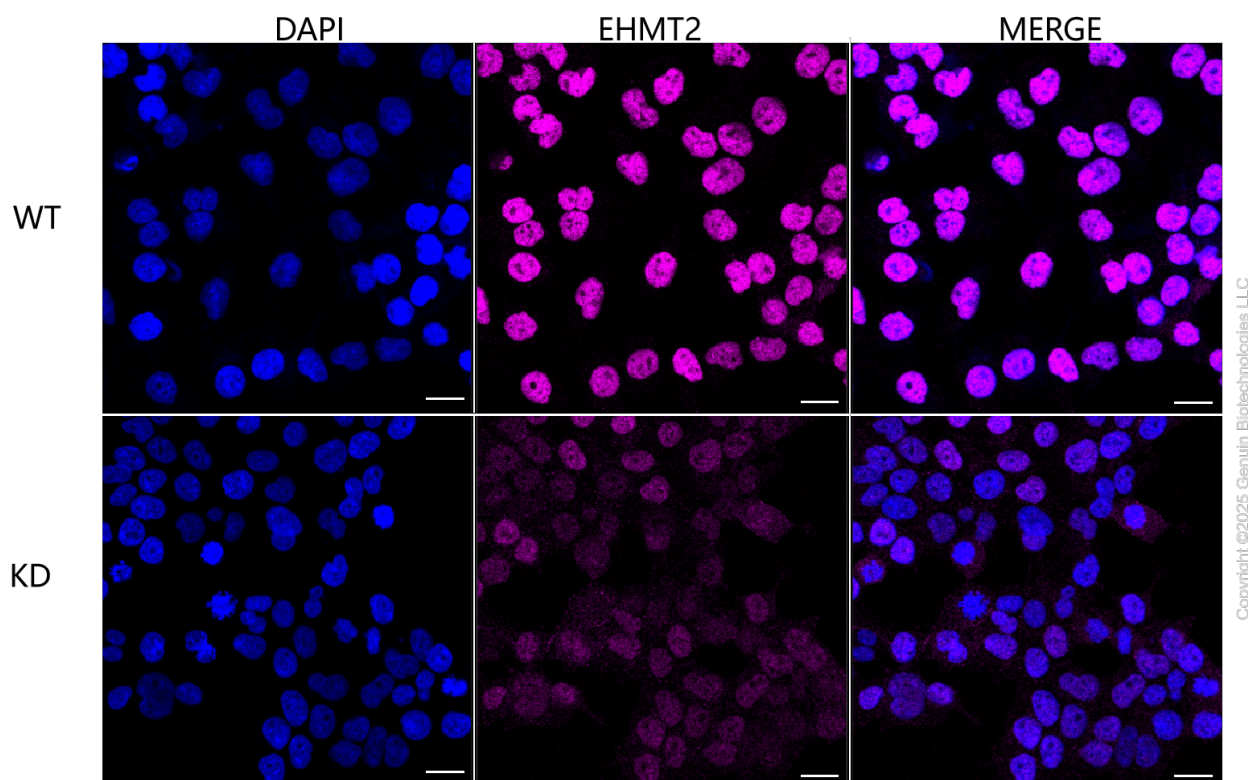
Immunohistochemistry was performed on paraffin-embedded mouse brain using anti-EHMT2 antibody (Cat#68352, 1:200). Antigen retrieval was done in sodium citrate buffer (pH 6.0). DAB was used for detection, with hematoxylin counterstaining. Images were acquired using a Nikon Ci-L Plus microscope (40× objective). Scale bar: 25 μ m.



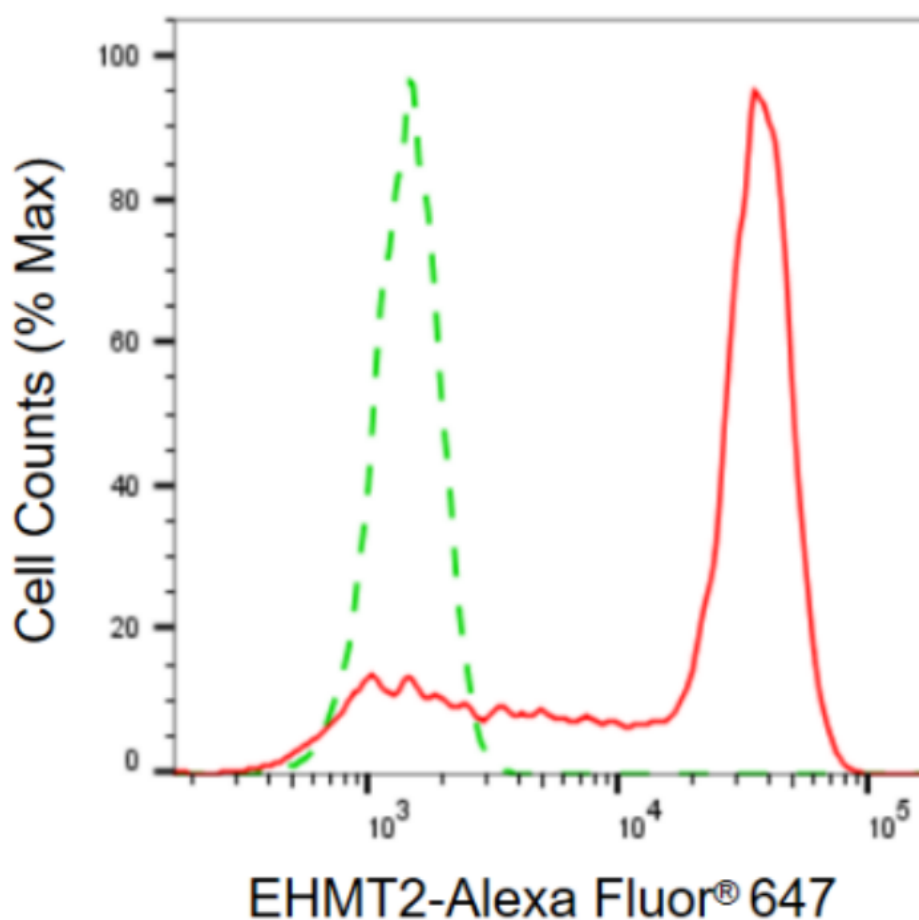
Copyright ©2025 Genuin Biotechnologies LLC

EHMT2-Alexa Fluor® 647

Validation of EHMT2 knockdown using flow cytometry. Wild-type(WT, Blue) and knockdown(KD, Green) HeLa cells were stained with anti-EHMT2 antibody (Cat#68352, 1:2,000) and analyzed using CytoFLEX.

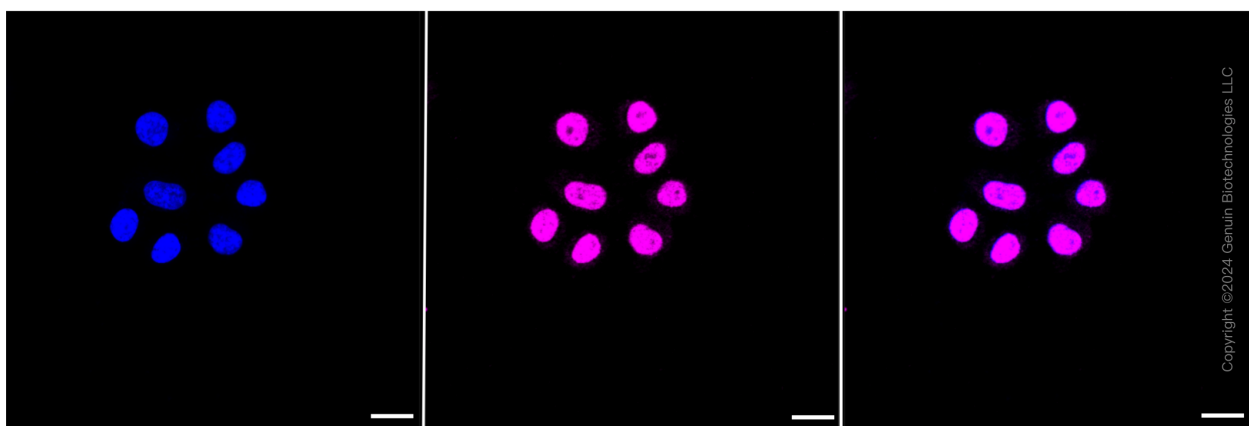


Immunocytochemical staining of HeLa cells using anti-EHMT2 antibody (Cat#68352, 1:1,000), Top panel: wild-type (WT); Bottom panel: EHMT2 shRNA knockdown (KD). Nuclei were stained blue with DAPI; EHMT2 was stained magenta with Alexa Fluor® 647. Scale bar, 20 μ m. Permeabilization: Triton.

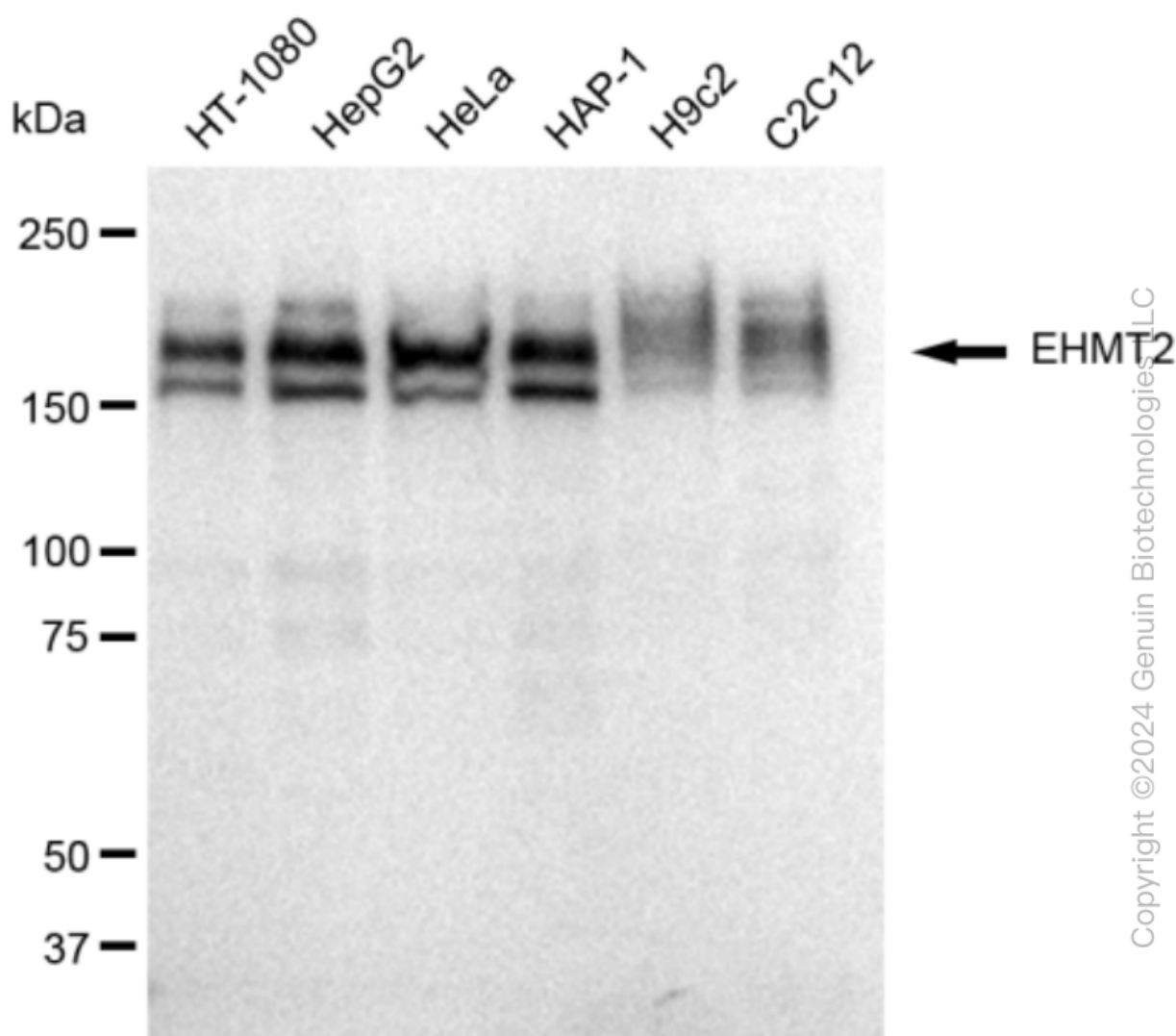


Copyright ©2024 Genuin Biotechnologies LLC

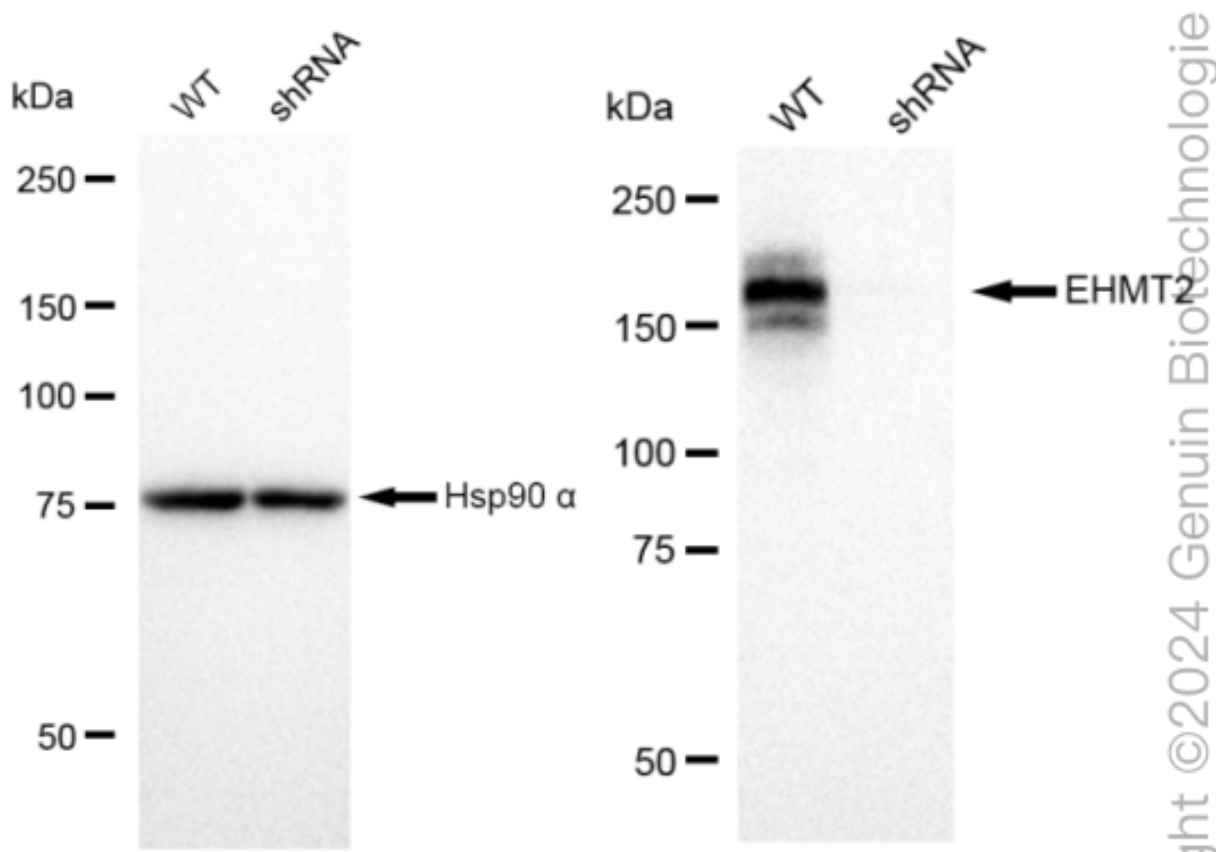
Flow cytometric analysis of EHMT2 expression in HepG2 cells using EHMT2 antibody (Cat#68352, 1:2,000). Green, isotype control; red, EHMT2 .



Immunocytochemical staining of HepG2 cells with EHMT2 antibody (Cat#68352, 1:1,000). Nuclei were stained blue with DAPI; EHMT2 was stained magenta with Alexa Fluor® 647. Scale bar: 20 μ m.



Western blotting analysis using anti-EHMT2 antibody (Cat#68352). Total cell lysates (30 μ g) from various cell lines were loaded and separated by SDS-PAGE. The blot was incubated with anti-EHMT2 antibody (Cat#68352, 1:5,000) and HRP-conjugated goat anti-rabbit secondary antibody (Cat#201, 1:20,000) respectively. Image was developed using FeQ™ ECL Substrate Kit (Cat#226).



Western blotting analysis using anti-EHMT2 antibody (Cat#68352). EHMT2 expression in wild type (WT) and EHMT2 shRNA knockdown (KD) HeLa cells with 30 µg of total cell lysates. Hsp90 α serves as a loading control. The blot was incubated with anti-EHMT2 antibody (Cat#68352, 1:5,000) and HRP-conjugated goat anti-rabbit secondary antibody (Cat#201, 1:20,000) respectively. Image was developed using FeQ™ ECL Substrate Kit (Cat#226).