

KD-Validated Anti-IKK alpha Rabbit Monoclonal Antibody



Catalog #: 68374

Aliases

CHUK; Component Of Inhibitor Of Nuclear Factor Kappa B Kinase Complex; IKK-Alpha; NFKB1A; IKK1; IKKA; Inhibitor Of Nuclear Factor Kappa-B Kinase Subunit Alpha; Conserved Helix-Loop-Helix Ubiquitous Kinase; IkbKA; TCF16; Transcription Factor 16; I-Kappa-B Kinase 1; EC 2.7.11.10; IKK-1; Nuclear Factor NF-Kappa-B Inhibitor Kinase Alpha; Nuclear Factor NfKappaB Inhibitor Kinase Alpha; Ikb Kinase Alpha Subunit; I-Kappa-B Kinase-Alpha; I-Kappa-B Kinase Alpha; I-Kappa-B Kinase; IkappaB Kinase; IKK-A Kinase; EC 2.7.11; TCF-16; IKBKA; IKK-A; BPS2

Background

Gene Name: CHUK

NCBI Gene Entry: [1147](#)

UniProt Entry: [O15111](#)

Application Information

Molecular Weight: Predicted, 85 kDa, observed, 85 kDa

Clonality: Rabbit monoclonal antibody

Clone ID: 23GB1065

Species Reactivity: Human, mouse, rat

Applications Tested: Western blotting (WB), flow cytometry (FCM), immunocytochemistry (IC)

Immunogen

A synthesized peptide derived from human IKK alpha

Isotype

Rabbit IgG

Storage Buffer

Supplied in PBS (pH 7.4) containing 50% glycerol, and 0.02% sodium azide.

Storage

Store at -20 °C for one year.

Recommended Dilutions

Western Blotting (WB): 1:1,000-1:5,000

Flow Cytometry (FCM): 1:2,000

SUPPORT

SUPPORT@GENUINBIOTECH.COM
TEL: +1-540-855-7041

ORDERS

SALES@GENUINBIOTECH.COM
FAX: +1-540-855-7041

WWW.GENUINBIOTECH.COM

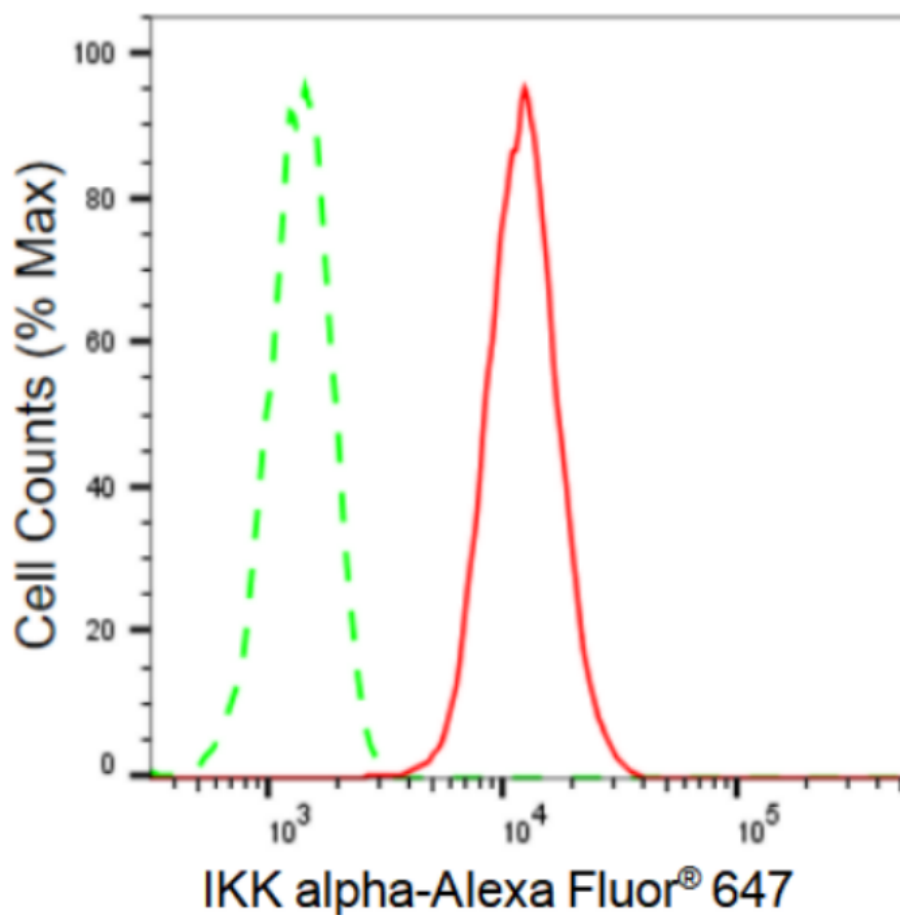
KD-Validated Anti-IKK alpha Rabbit Monoclonal Antibody

PAGE 2

Immunocytochemistry (IC): 1:100-1:1,000

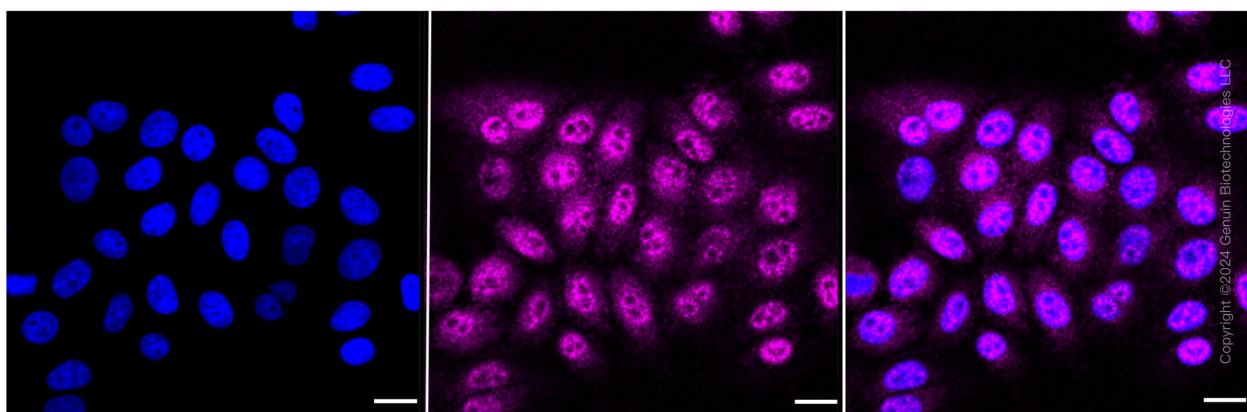
Note: This product is for research use only.

Validation Data



Copyright ©2024 Genuin Biotechnologies LLC

Flow cytometric analysis of IKK alpha expression in HepG2 cells using IKK alpha antibody (Cat#68374, 1:2,000). Green, isotype control; red, IKK alpha.



Copyright ©2024 Genuin Biotechnologies LLC

SUPPORT

SUPPORT@GENUINBIOTECH.COM
TEL: +1-540-855-7041

ORDERS

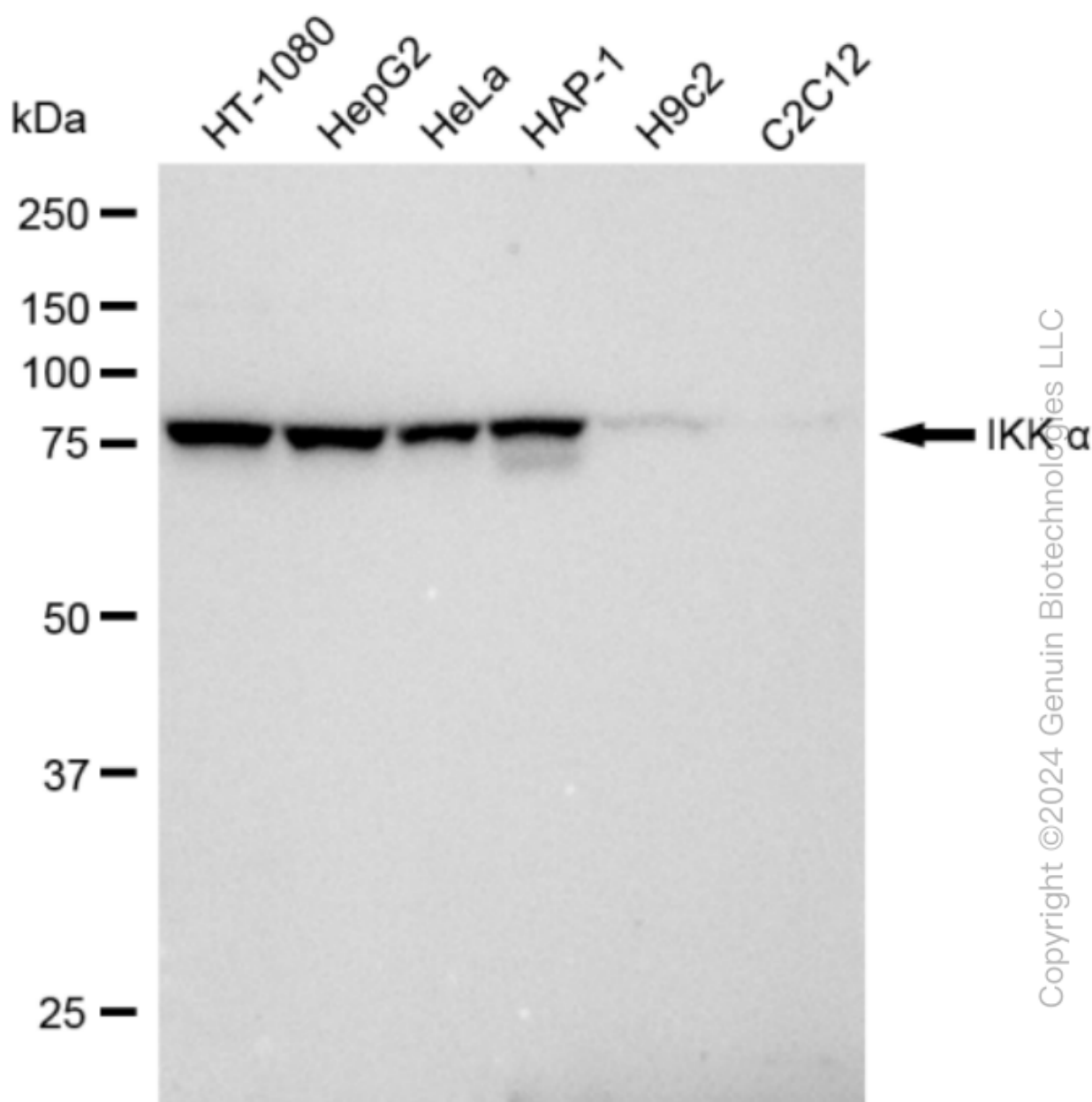
SALES@GENUINBIOTECH.COM
FAX: +1-540-855-7041

WWW.GENUINBIOTECH.COM

KD-Validated Anti-IKK alpha Rabbit Monoclonal Antibody

PAGE 3

Immunocytochemical staining of HepG2 cells with component of inhibitor of IKK alpha antibody (Cat#68374, 1:1,000). Nuclei were stained blue with DAPI; Component of inhibitor of IKK alpha was stained magenta with Alexa Fluor® 647. Images were taken using Leica stellaris 5. Protein abundance based on laser Intensity and smart gain: medium. Scale bar: 20 µm.



Western blotting analysis using anti-IKK alpha antibody (Cat#68374). Total cell lysates (30 µg) from various cell lines were loaded and separated by SDS-PAGE. The blot was incubated with anti-IKK alpha antibody (Cat#68374, 1:5,000) and HRP-conjugated goat anti-rabbit secondary antibody (Cat#201, 1:20,000) respectively. Image was developed using FeQ™ ECL Substrate Kit (Cat#226).

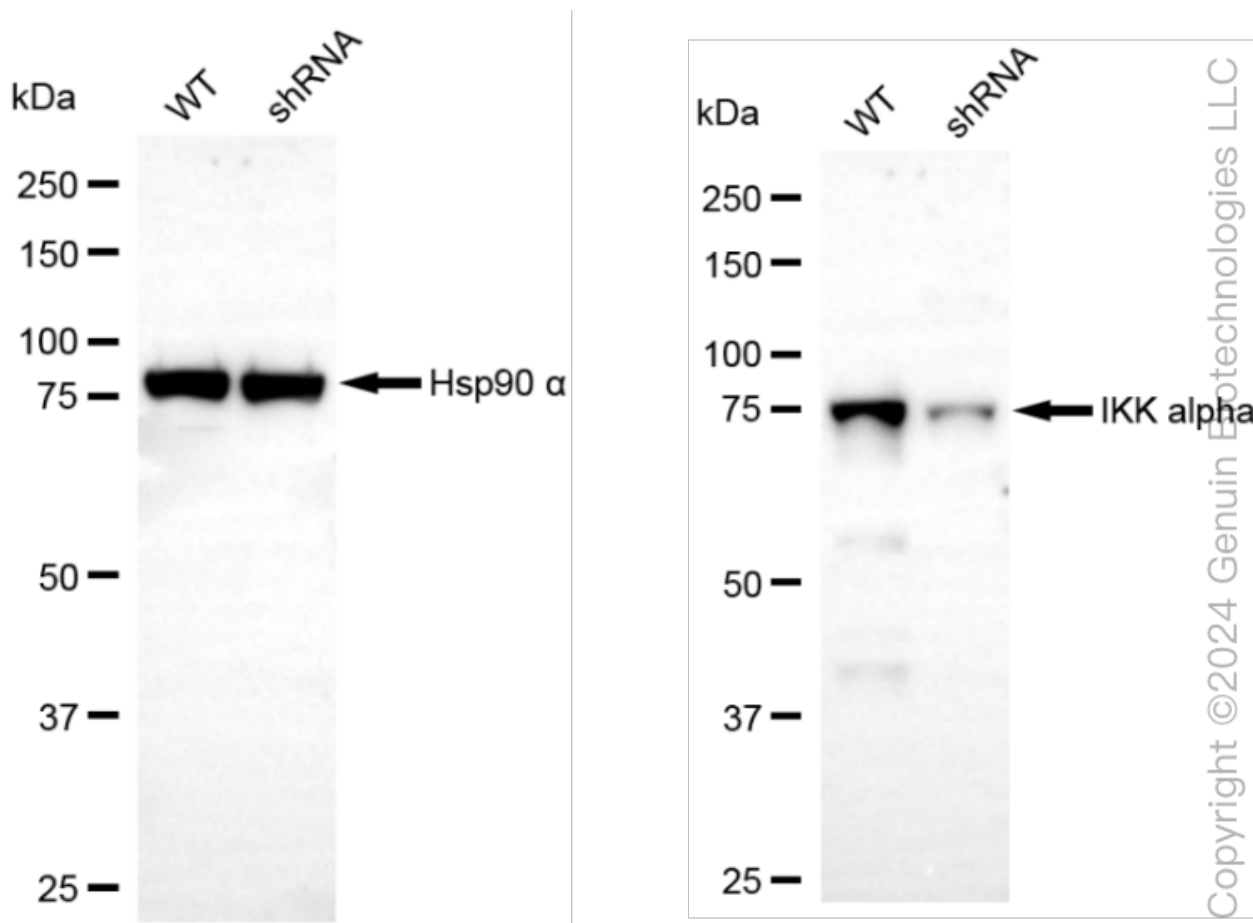
SUPPORT

SUPPORT@GENUINBIOTECH.COM
TEL: +1-540-855-7041

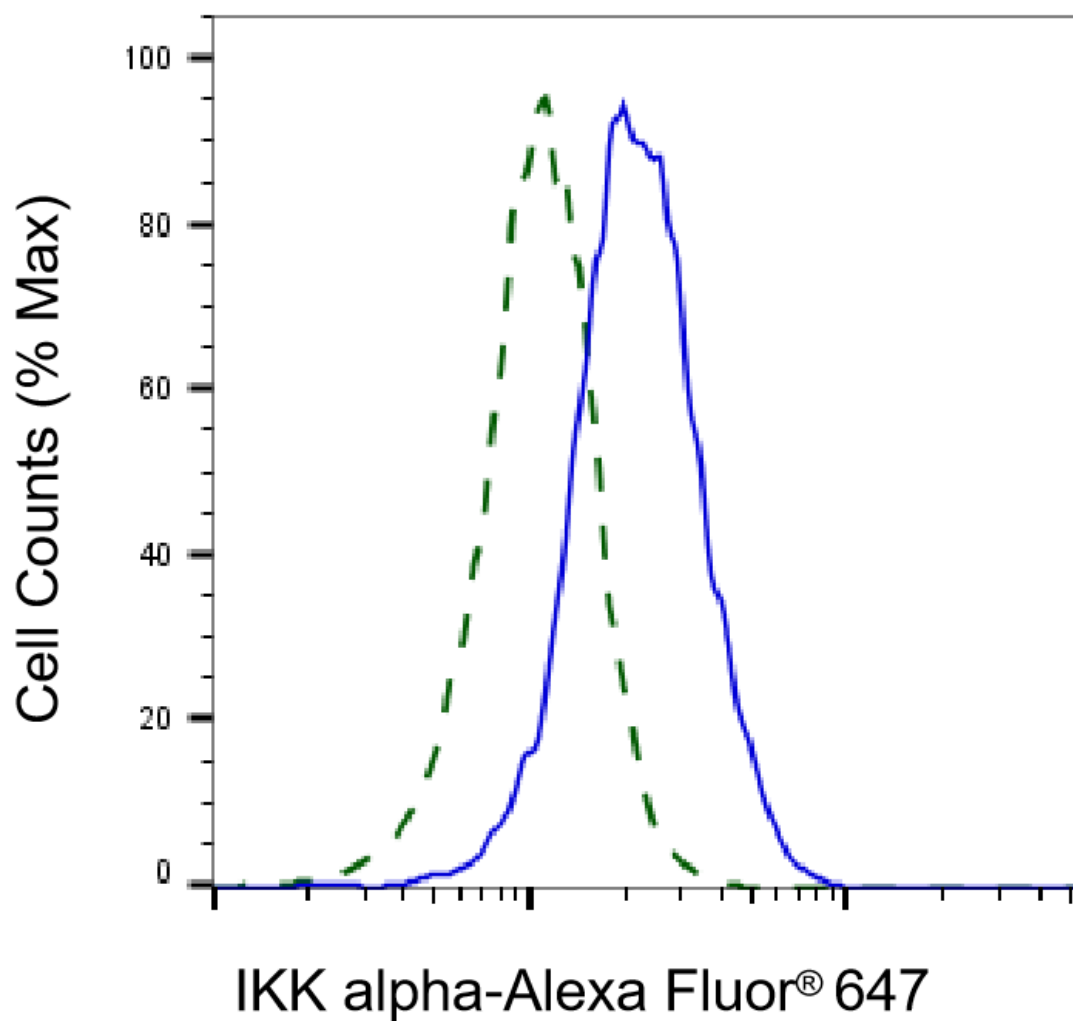
ORDERS

SALES@GENUINBIOTECH.COM
FAX: +1-540-855-7041

WWW.GENUINBIOTECH.COM

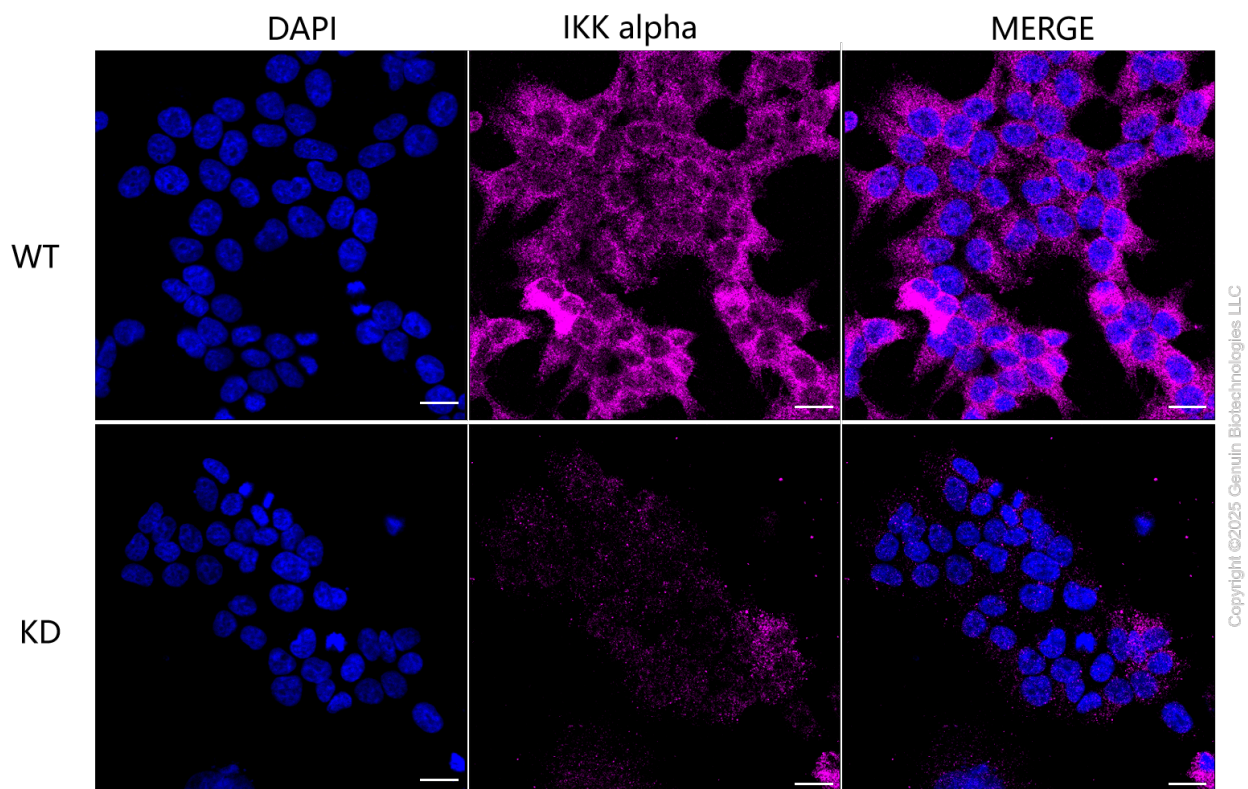


Western blotting analysis using anti-IKK alpha antibody (Cat#68374). IKK alpha expression in wild type (WT) and IKK alpha shRNA knockdown (KD) HeLa cells with 30 µg of total cell lysates. β-Tubulin serves as a loading control. The blot was incubated with anti-IKK alpha antibody (Cat#68374, 1:5,000) and HRP-conjugated goat anti-rabbit secondary antibody (Cat#201, 1:20,000) respectively. Image was developed using FeQ™ ECL Substrate Kit (Cat#226).



Copyright ©2025 Genuin Biotechnologies LLC

Validation of IKK alpha knockdown using flow cytometry. Wild-type(WT, Blue) and knockdown(KD, Green) HeLa cells were stained with anti-IKK alpha antibody (Cat#68374, 1:2,000) and analyzed using BD flow cytometer.



Immunocytochemical staining of HeLa cells using anti-IKK alpha antibody (Cat#68374, 1:1,000), Top panel: wild-type (WT); Bottom panel: IKK alpha shRNA knockdown (KD). Nuclei were stained blue with DAPI; IKK alpha was stained magenta with Alexa Fluor® 647. Scale bar, 20 μ m. Permeabilization: Triton.