

# KD-Validated Anti-Flotillin 1 Recombinant Rabbit Monoclonal Antibody



**Catalog #: 68451**

## Aliases

Flotillin 1; Flotillin-1; Integral Membrane Component Of Caveolae

## Background

Gene Name: FLOT1

NCBI Gene Entry: [10211](#)

UniProt Entry: [O75955](#)

## Application Information

Molecular Weight: Predicted, 47 kDa, observed, 48 kDa

Clonality: Rabbit monoclonal antibody

Clone ID: 23GB840

Species Reactivity: Human, mouse, rat

Applications Tested: Western blotting (WB), flow cytometry (FCM), immunocytochemistry (IC)

## Immunogen

A synthesized peptide derived from human Flotillin 1

## Isotype

Rabbit IgG

## Storage Buffer

Supplied in PBS (pH 7.4) containing 50% glycerol, and 0.02% sodium azide.

## Storage

Store at -20 °C for one year.

## Recommended Dilutions

Western Blotting (WB): 1:2,000-1:10,000

Flow Cytometry (FCM): 1:2,000

Immunocytochemistry (IC): 1:100-1:1,000

**Note:** This product is for research use only.

## Validation Data

---

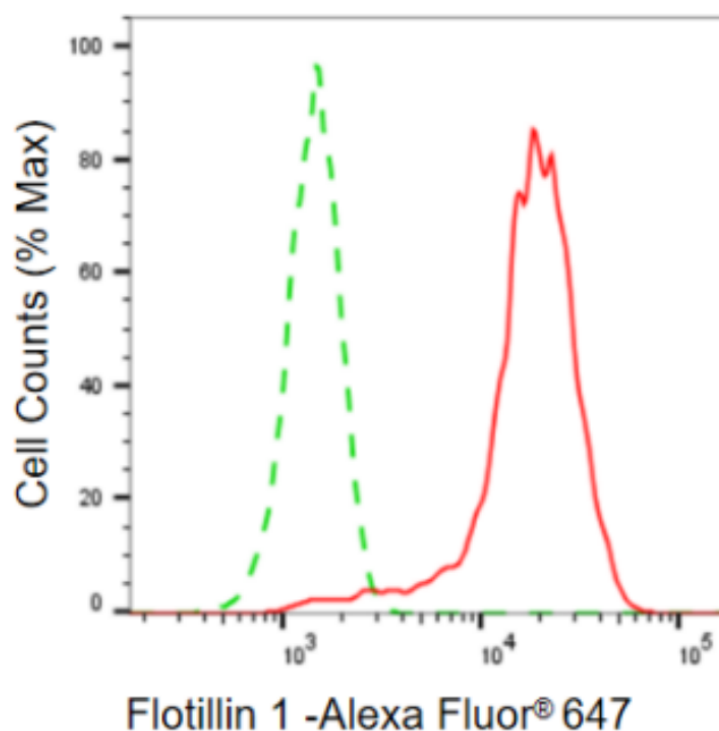
### SUPPORT

SUPPORT@GENUINBIOTECH.COM  
TEL: +1-540-855-7041

### ORDERS

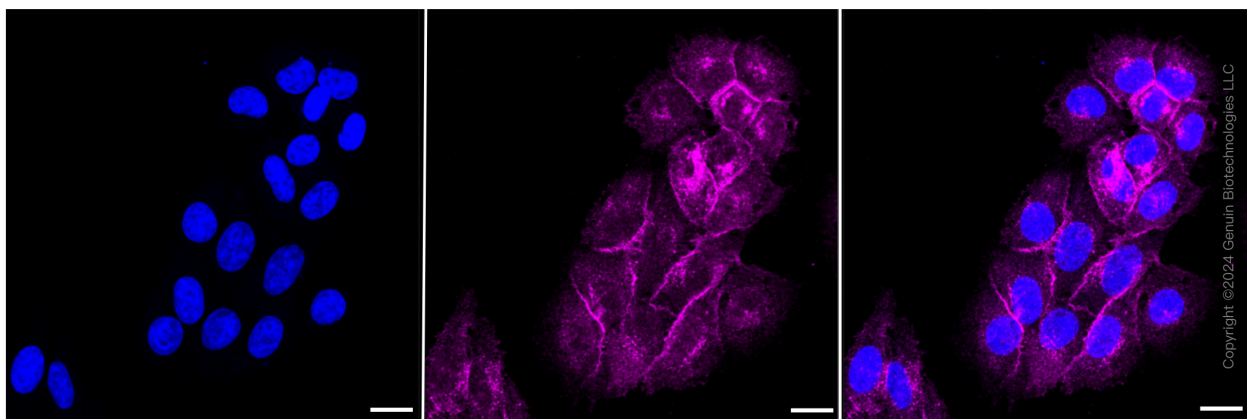
SALES@GENUINBIOTECH.COM  
FAX: +1-540-855-7041

[WWW.GENUINBIOTECH.COM](http://WWW.GENUINBIOTECH.COM)

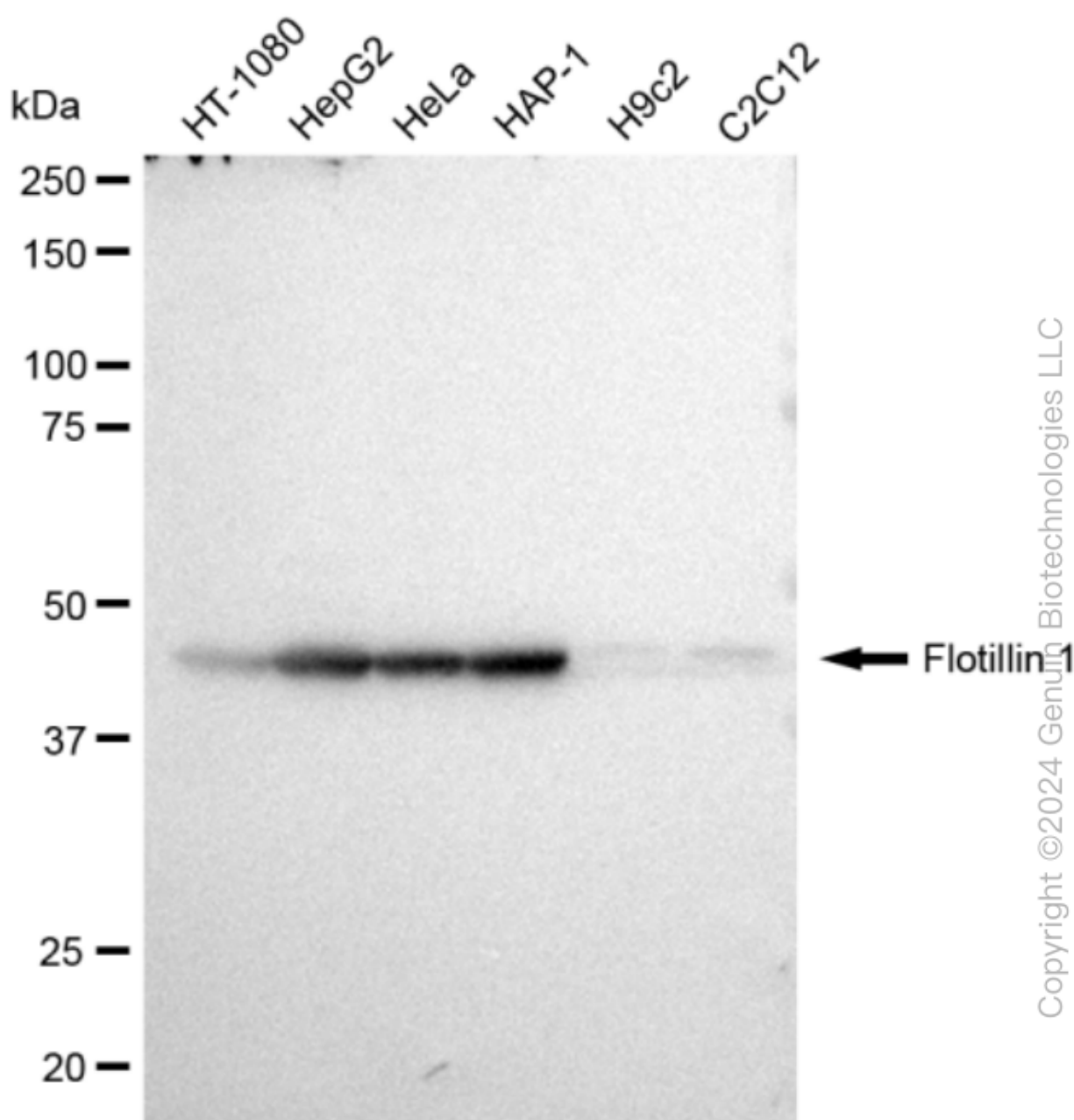


Copyright ©2024 Genuin Biotechnologies LLC

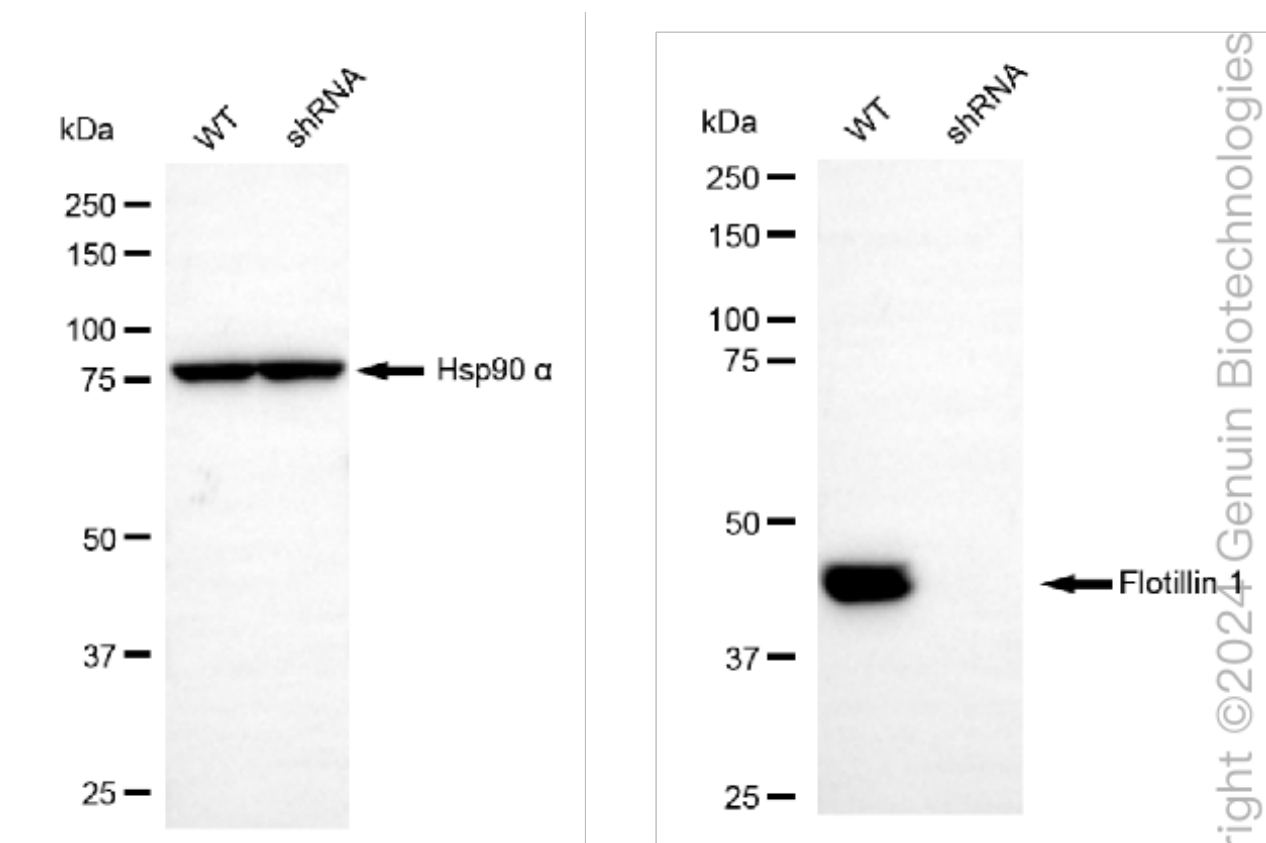
Flow cytometric analysis of Flotillin 1 expression in HepG2 cells using anti-Flotillin 1 antibody (Cat#68451, 1:2,000). Green, isotype control; red, Flotillin 1.



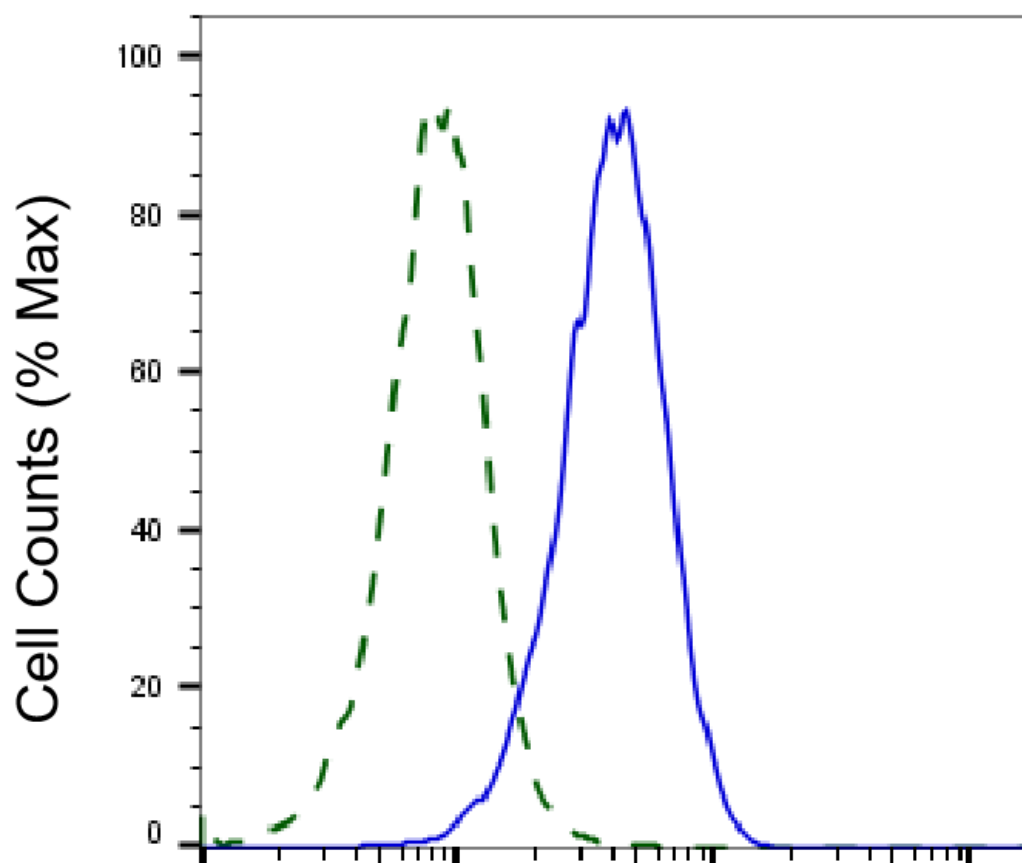
Immunocytochemical staining of HepG2 cells with Flotillin 1 antibody (Cat#68451, 1:1,000). Nuclei were stained blue with DAPI; Flotillin 1 was stained magenta with Alexa Fluor® 647. Images were taken using Leica stellaris 5. Protein abundance based on laser Intensity and smart gain: Medium. Scale bar: 20  $\mu$ m.



Western blotting analysis using anti-Flotillin 1 antibody (Cat#68451). Total cell lysates (30 µg) from various cell lines were loaded and separated by SDS-PAGE. The blot was incubated with anti-Flotillin 1 antibody (Cat#68451, 1:10,000) and HRP-conjugated goat anti-rabbit secondary antibody (Cat#201, 1:50,000) respectively. Image was developed using FeQ™ ECL Substrate Kit (Cat#226).



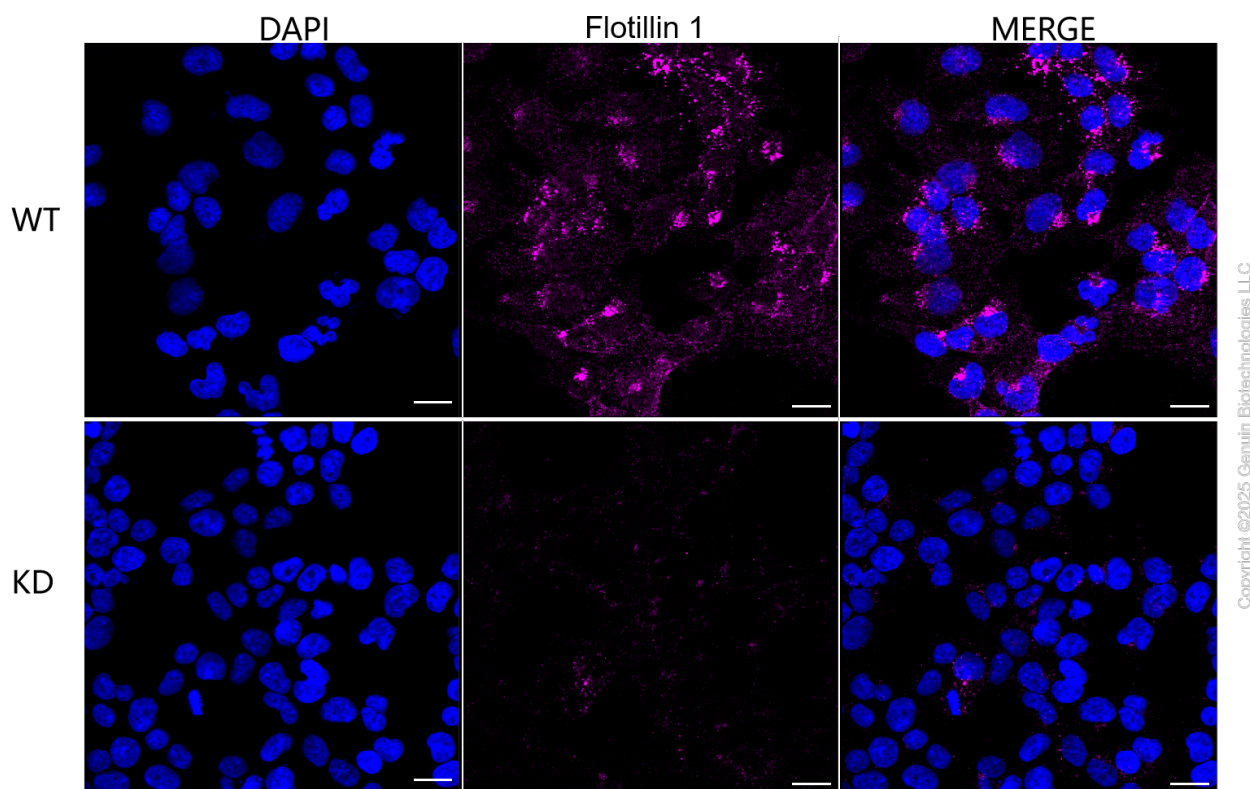
Western blotting analysis using anti-Flotillin 1 antibody (Cat#68451). Flotillin 1 expression in wild type (WT) and Flotillin 1 shRNA knockdown (KD) HeLa cells with 30  $\mu$ g of total cell lysates.  $\beta$ -Tubulin serves as a loading control. The blot was incubated with anti-Flotillin 1 antibody (Cat#68451, 1:10,000) and HRP-conjugated goat anti-rabbit secondary antibody (Cat#201, 1:50,000) respectively. Image was developed using FeQ<sup>TM</sup> ECL Substrate Kit (Cat#226).



Copyright ©2025 Genuin Biotechnologies LLC

## Flotillin 1-Alexa Fluor® 647

Validation of Flotillin 1 knockdown using flow cytometry. Wild-type(WT, Blue) and knockdown(KD, Green) HeLa cells were stained with anti-Flotillin 1 antibody (Cat#68451, 1:2,000) and analyzed using CytoFLEX.



Immunocytochemical staining of HeLa cells using anti-Flotillin 1 antibody (Cat#68451, 1:1,000), Top panel: wild-type (WT); Bottom panel: Flotillin 1 shRNA knockdown (KD). Nuclei were stained blue with DAPI; Flotillin 1 was stained magenta with Alexa Fluor® 647. Scale bar, 20  $\mu$ m. Permeabilization: Triton.