

# KD-Validated Anti-Forkhead box A1 Recombinant Rabbit Monoclonal Antibody



**Catalog #: 68581**

## Aliases

FOXA1; Forkhead Box A1; HNF3A; Hepatocyte Nuclear Factor 3-Alpha; Forkhead Box Protein A1; Transcription Factor 3A; HNF-3-Alpha; HNF-3A; TCF-3A; TCF3A; Hepatocyte Nuclear Factor 3, Alpha

## Background

Gene Name: FOXA1

NCBI Gene Entry: [3169](#)

UniProt Entry: [P55317](#)

## Application Information

Molecular Weight: Predicted, 49 kDa, observed, 49 kDa

Clonality: Rabbit monoclonal antibody

Clone ID: 23GB1170

Species Reactivity: Human, rat

Applications Tested: Western blotting (WB), flow cytometry (FCM), immunocytochemistry (IC)

## Immunogen

A synthesized peptide derived from human FOXA1

## Isotype

Rabbit IgG

## Storage Buffer

Supplied in PBS (pH 7.4) containing 50% glycerol, and 0.02% sodium azide.

## Storage

Store at -20 °C for one year.

## Recommended Dilutions

Western Blotting (WB): 1:1,000-1:5,000

Flow Cytometry (FCM): 1:2,000

Immunocytochemistry (IC): 1:100-1:1,000

**Note:** This product is for research use only.

---

### SUPPORT

SUPPORT@GENUINBIOTECH.COM  
TEL: +1-540-855-7041

### ORDERS

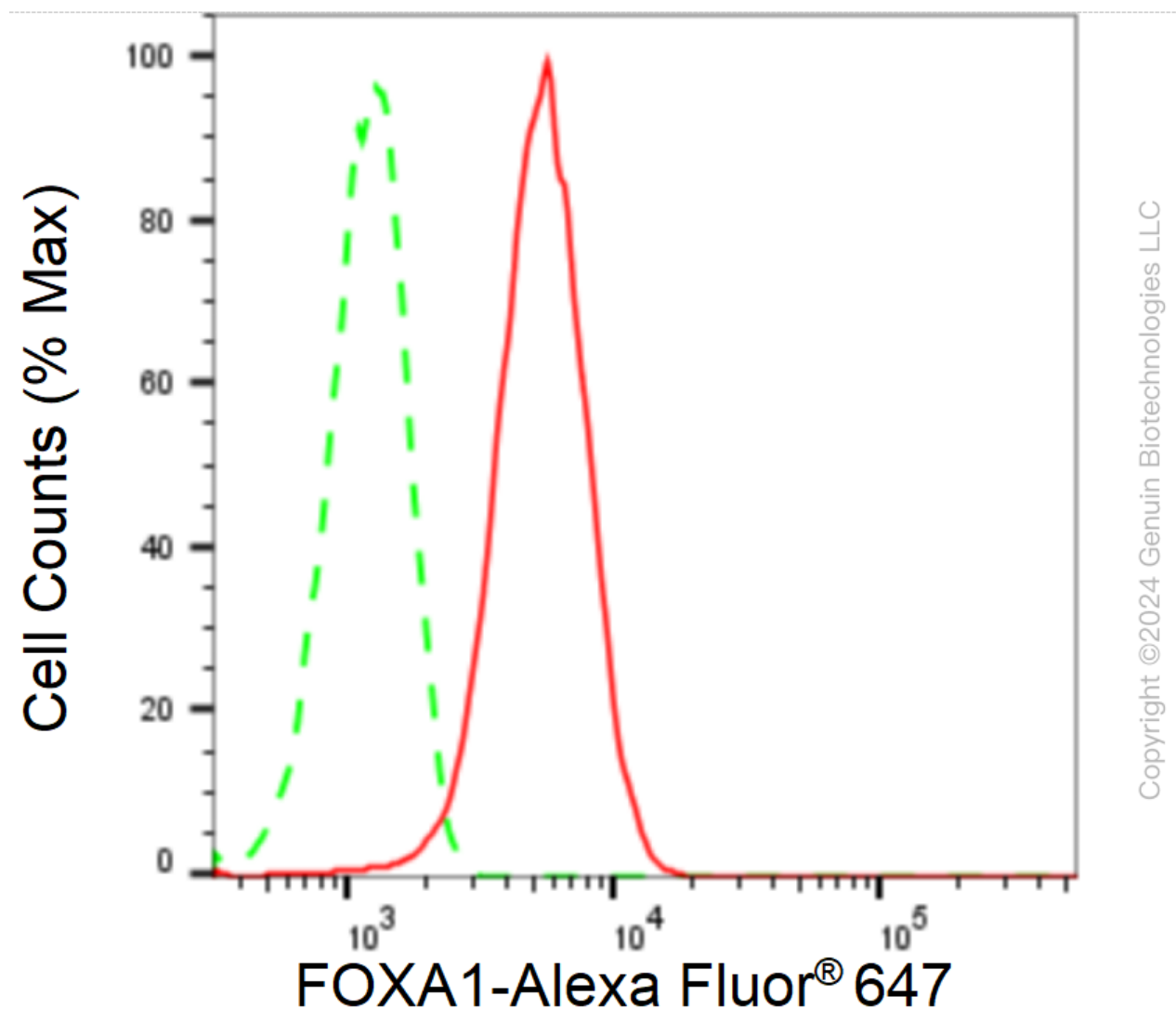
SALES@GENUINBIOTECH.COM  
FAX: +1-540-855-7041

[WWW.GENUINBIOTECH.COM](http://WWW.GENUINBIOTECH.COM)

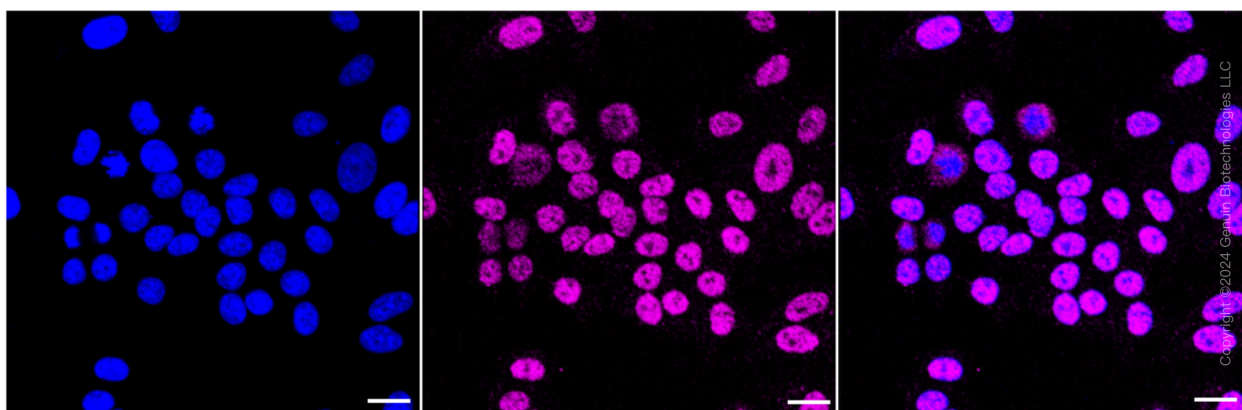
# KD-Validated Anti-Forkhead box A1 Recombinant Rabbit Monoclonal Antibody

PAGE 2

## Validation Data



Flow cytometric analysis of FOXA1 expression in HepG2 cells using anti-FOXA1 antibody (Cat#68581, 1:2,000). Green, isotype control; red, FOXA1.



### SUPPORT

SUPPORT@GENUINBIOTECH.COM  
TEL: +1-540-855-7041

### ORDERS

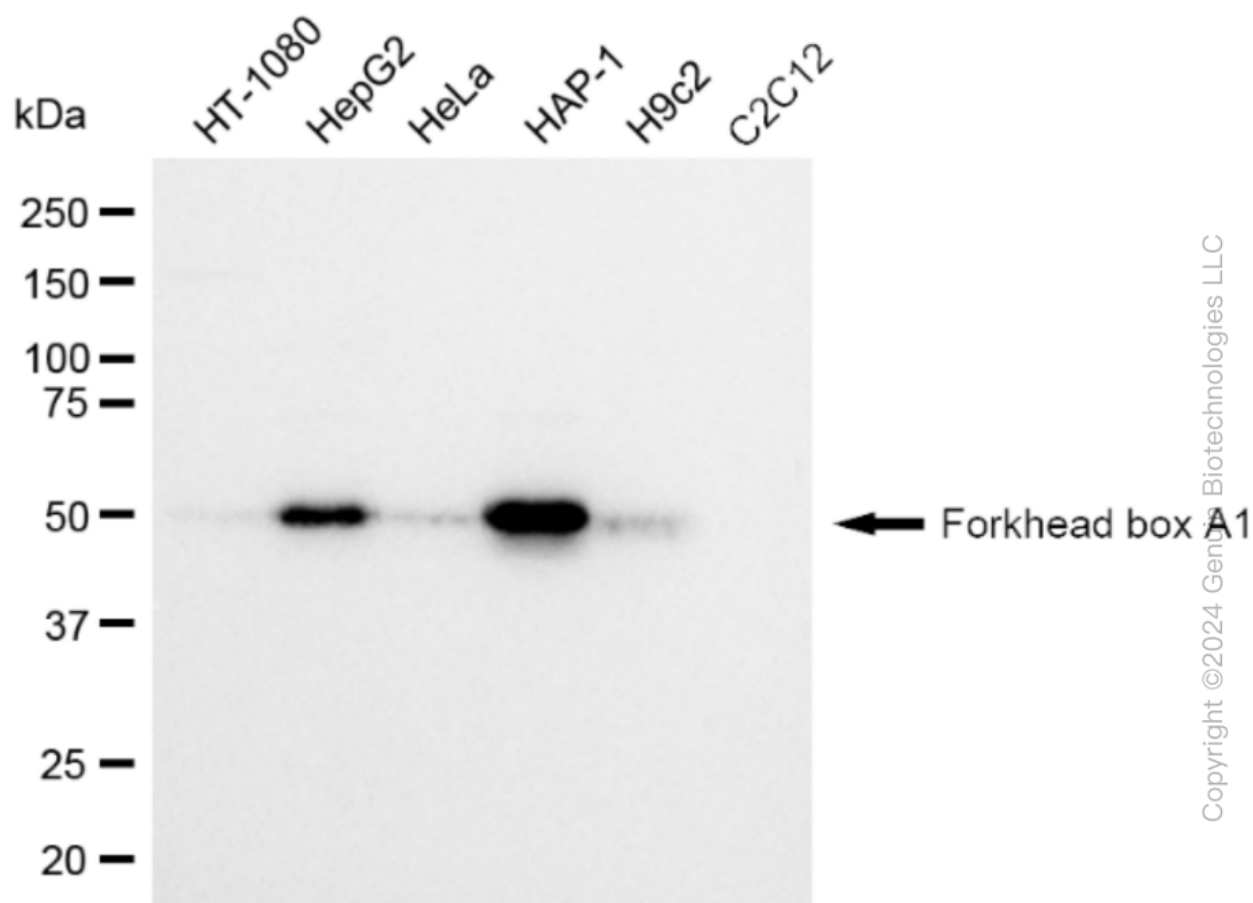
SALES@GENUINBIOTECH.COM  
FAX: +1-540-855-7041

WWW.GENUINBIOTECH.COM

## KD-Validated Anti-Forkhead box A1 Recombinant Rabbit Monoclonal Antibody

PAGE 3

Immunocytochemical staining of HepG2 cells with Forkhead box A1 antibody (Cat#68581, 1:1,000). Nuclei were stained blue with DAPI; Forkhead box A1 was stained magenta with Alexa Fluor® 647. Images were taken using Leica stellaris 5. Protein abundance based on laser Intensity and smart gain: Medium. Scale bar: 20  $\mu$ m.



Western blotting analysis using anti-Forkhead box A1 antibody (Cat#68581). Total cell lysates (30  $\mu$ g) from various cell lines were loaded and separated by SDS-PAGE. The blot was incubated with anti-Forkhead box A1 antibody (Cat#68581, 1:5,000) and HRP-conjugated goat anti-rabbit secondary antibody (Cat#201, 1:20,000) respectively. Image was developed using FeQ™ ECL Substrate Kit (Cat#226).

### SUPPORT

SUPPORT@GENUINBIOTECH.COM  
TEL: +1-540-855-7041

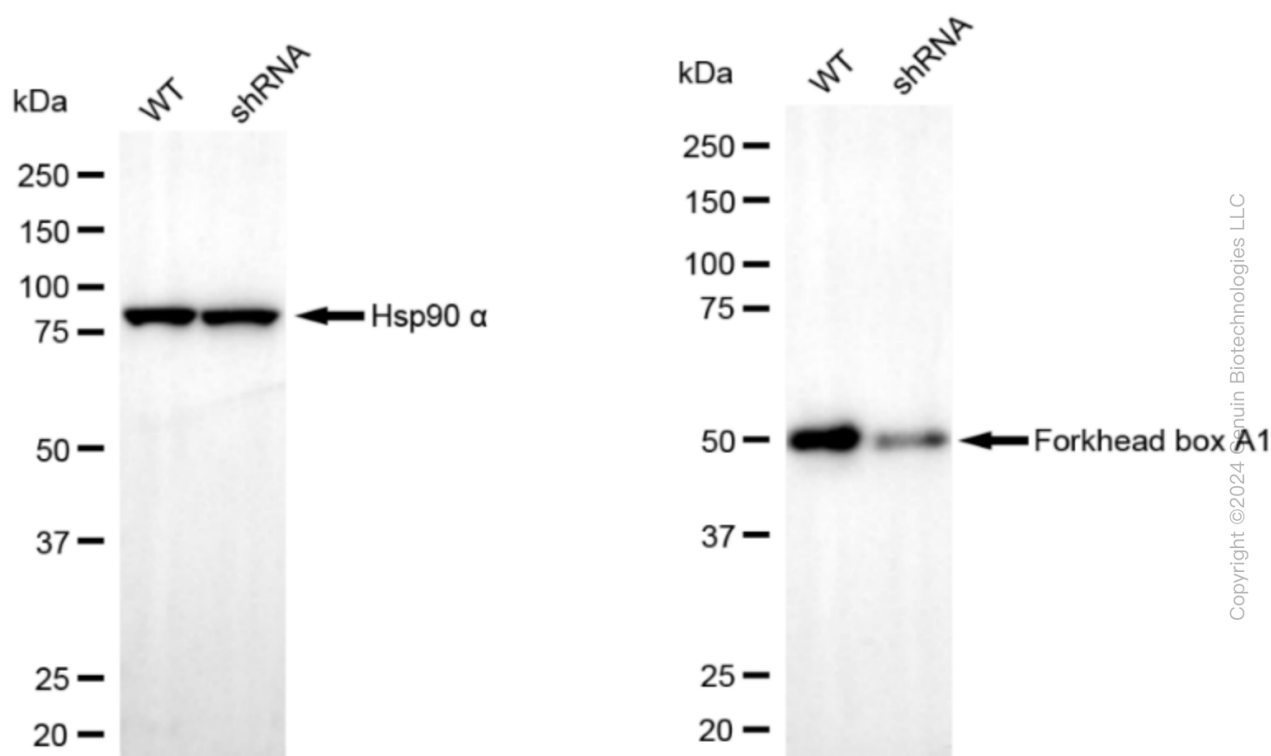
### ORDERS

SALES@GENUINBIOTECH.COM  
FAX: +1-540-855-7041

WWW.GENUINBIOTECH.COM

## KD-Validated Anti-Forkhead box A1 Recombinant Rabbit Monoclonal Antibody

PAGE 4



Copyright ©2024 Genuin Biotechnologies LLC

Western blotting analysis using anti-forkhead box A1 antibody (Cat#68581). Forkhead box A1 expression in wild-type (WT) and forkhead box A1 (FOXA1) shRNA knockdown (KD) HepG2 cells with 30  $\mu$ g of total cell lysates. Hsp90  $\alpha$  serves as a loading control. The blot was incubated with anti-forkhead box A1 antibody (Cat#68581, 1:5,000) and HRP-conjugated goat anti-rabbit secondary antibody (Cat#201, 1:20,000) respectively. Image was developed using FeQ™ ECL Substrate Kit (Cat#226).

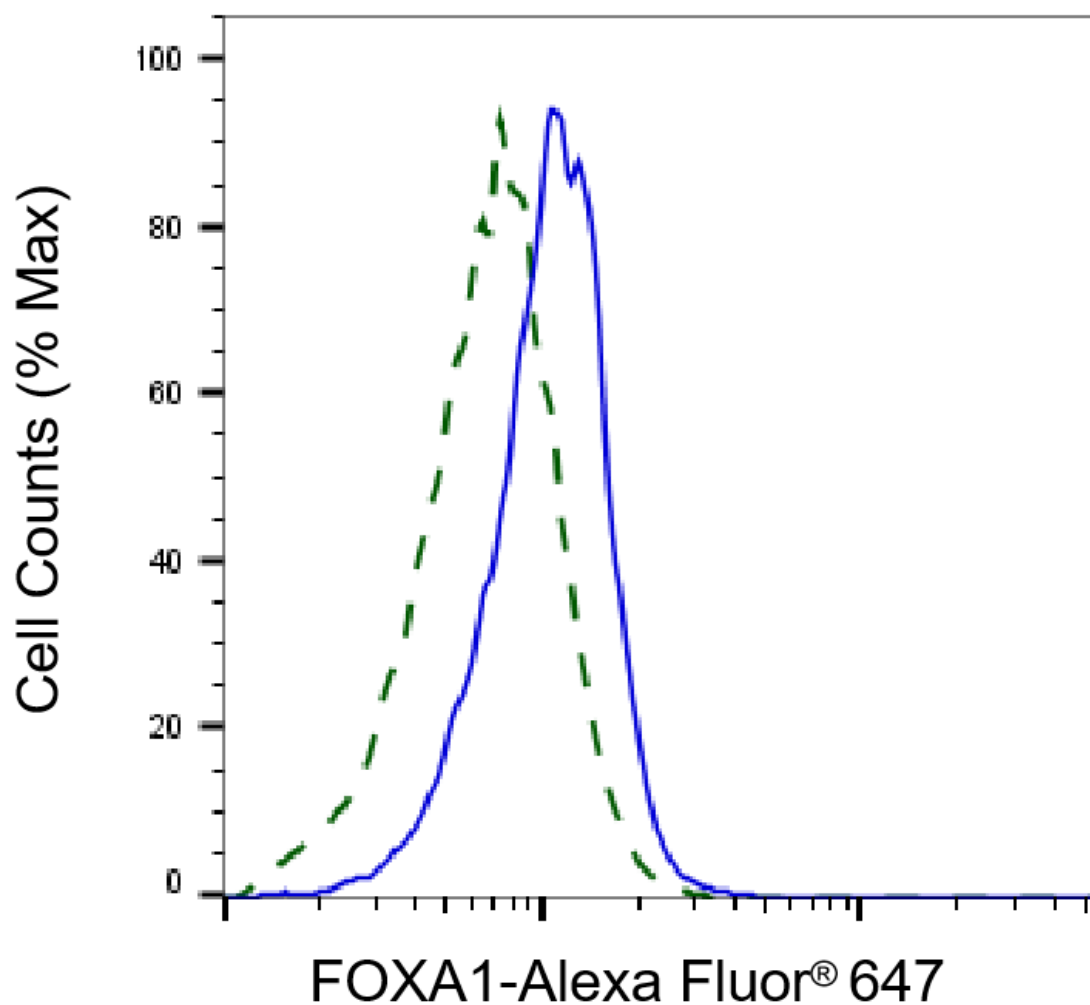
### SUPPORT

SUPPORT@GENUINBIOTECH.COM  
TEL: +1-540-855-7041

### ORDERS

SALES@GENUINBIOTECH.COM  
FAX: +1-540-855-7041

[WWW.GENUINBIOTECH.COM](http://WWW.GENUINBIOTECH.COM)



Copyright ©2025 Genuin Biotechnologies LLC

Validation of FOXA1 knockdown using flow cytometry. Wild-type(WT, Blue) and knockdown(KD, Green) HepG2 cells were stained with anti-FOXA1 antibody (Cat#68581, 1:2,000) and analyzed using BD flow cytometer.