

KD-Validated Anti-Bone morphogenetic protein 6 Recombinant Rabbit Monoclonal Antibody



Catalog #: 68616

Aliases

BMP6; Bone Morphogenetic Protein 6; VGR1; VGR; Vegetal Related Growth Factor (TGFB-Related); VG-1-Related Protein; VG-1-R; BMP-6; VGR-1; IO

Background

Gene Name: BMP6

NCBI Gene Entry: [654](#)

UniProt Entry: [P22004](#)

Application Information

Molecular Weight: Predicted, 57 kDa, observed, 42 kDa

Clonality: Rabbit monoclonal antibody

Clone ID: 23GB3705

Species Reactivity: Human, mouse, rat

Applications Tested: Western blotting (WB), flow cytometry (FCM), immunocytochemistry (IC)

Immunogen

A synthesized peptide derived from human BMP6

Isotype

Rabbit IgG

Storage Buffer

Supplied in PBS (pH 7.4) containing 50% glycerol, and 0.02% sodium azide.

Storage

Store at -20 °C for one year.

Recommended Dilutions

Western Blotting (WB): 1:1,000-1:5,000

Flow Cytometry (FCM): 1:2,000

Immunocytochemistry (IC): 1:100-1:1,000

Note: This product is for research use only.

Validation Data

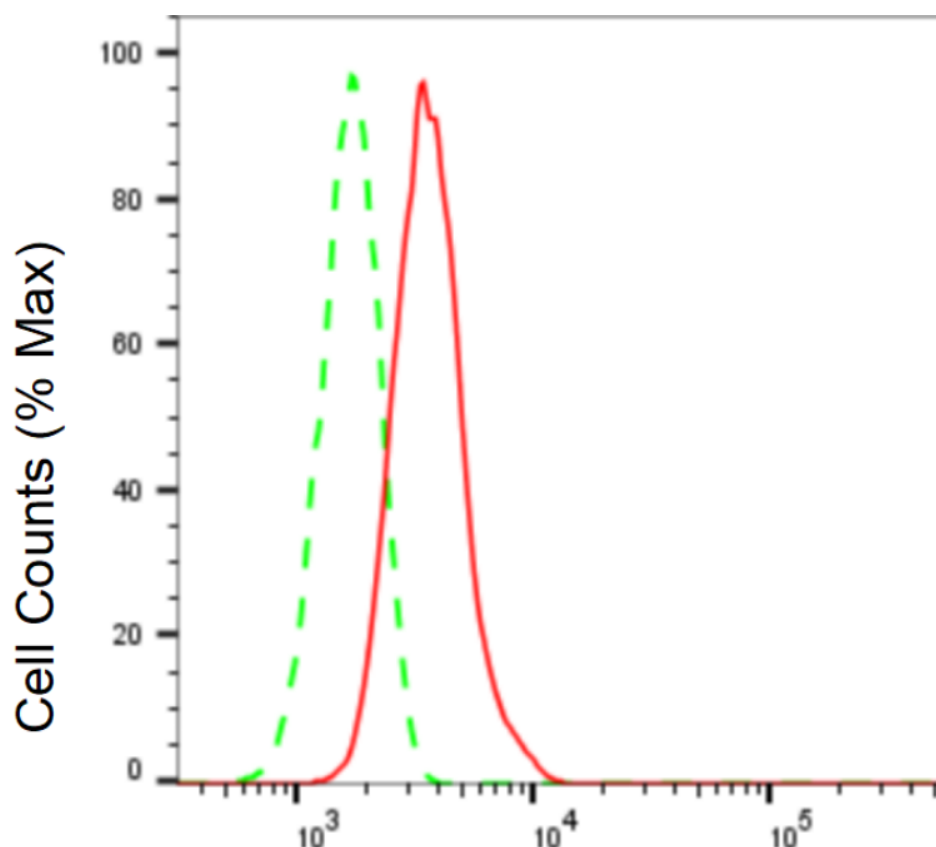
SUPPORT

SUPPORT@GENUINBIOTECH.COM
TEL: +1-540-855-7041

ORDERS

SALES@GENUINBIOTECH.COM
FAX: +1-540-855-7041

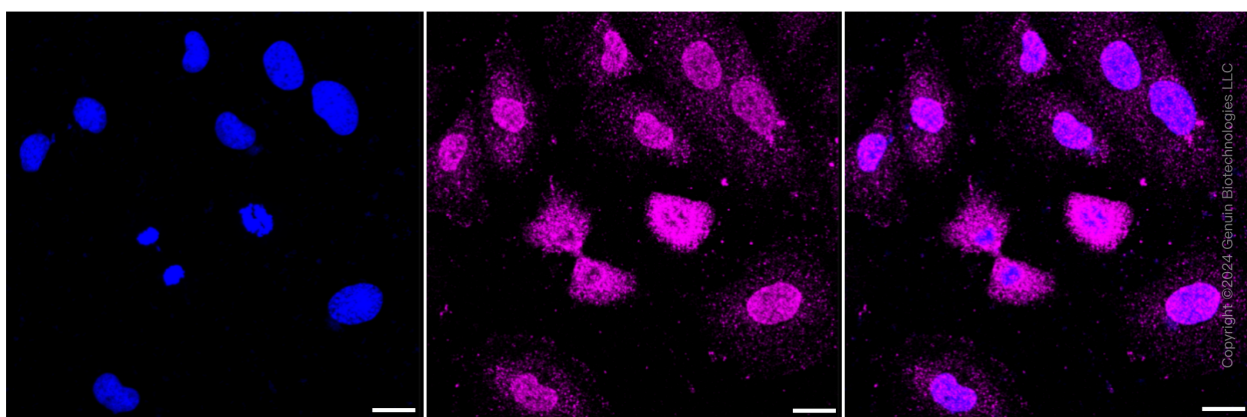
WWW.GENUINBIOTECH.COM



Copyright ©2024 Genuin Biotechnologies LLC

Bone morphogenetic protein 6-Alexa Fluor® 647

Flow cytometric analysis of Bone morphogenetic protein 6 expression in H9c2 cells using Bone morphogenetic protein 6 antibody (Cat#68616, 1:2,000). Green, isotype control; red, Bone morphogenetic protein 6.

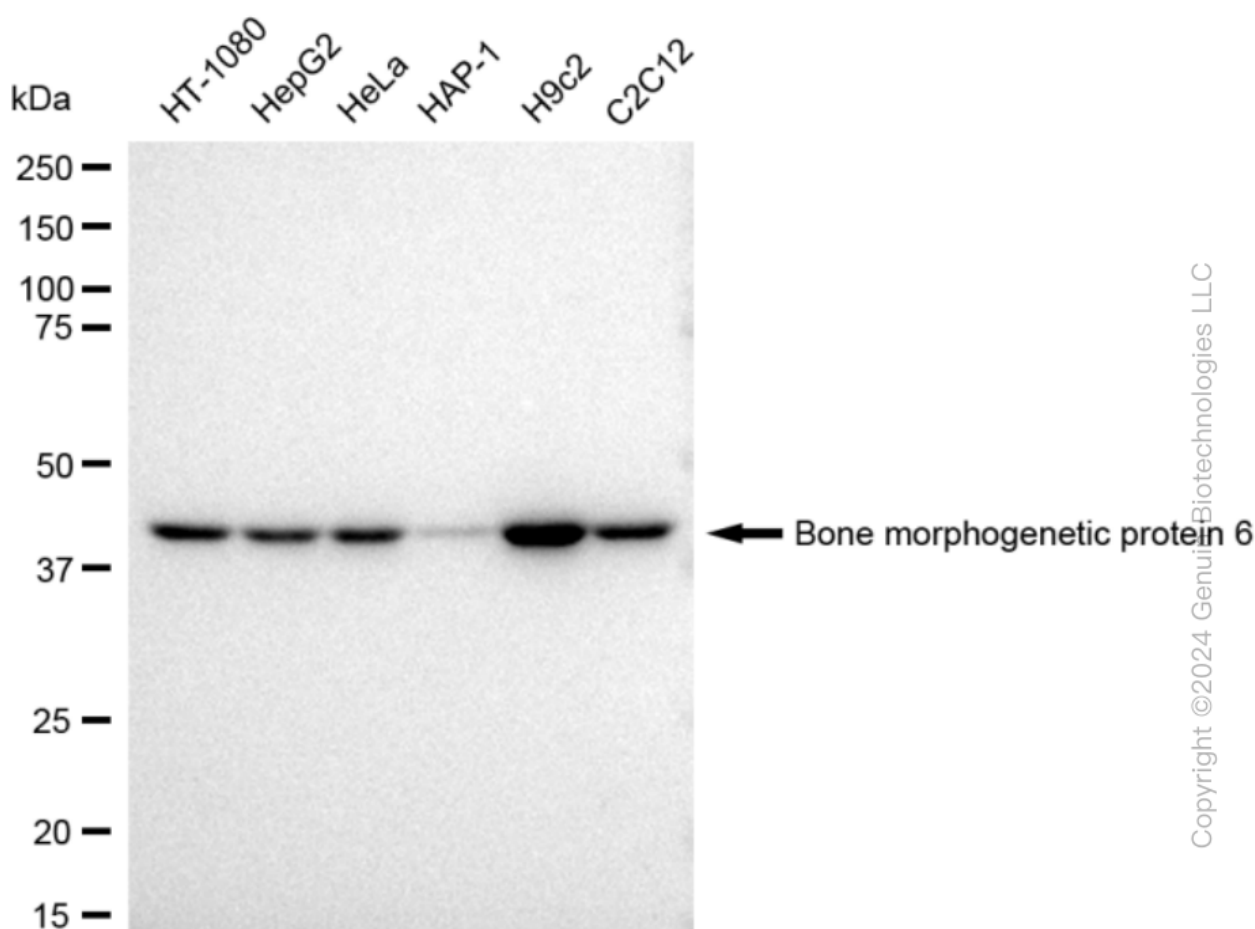


Copyright ©2024 Genuin Biotechnologies LLC

Immunocytochemical staining of H9c2 cells with Bone morphogenetic protein 6 antibody (Cat#68616, 1:1,000). Nuclei were stained blue with DAPI; Bone morphogenetic protein 6 was stained magenta with Alexa Fluor® 647. Images were taken using Leica stellaris 5. Protein abundance based on laser Intensity and smart gain: Medium. Scale bar: 20 μ m.

KD-Validated Anti-Bone morphogenetic protein 6 Recombinant Rabbit Monoclonal Antibody

PAGE 3



Western blotting analysis using anti-Bone morphogenetic protein 6 antibody (Cat#68616). Total cell lysates (30 µg) from various cell lines were loaded and separated by SDS-PAGE. The blot was incubated with anti-Bone morphogenetic protein 6 antibody (Cat#68616, 1:5,000) and HRP-conjugated goat anti-rabbit secondary antibody (Cat#201, 1:20,000) respectively. Image was developed using FeQ™ ECL Substrate Kit (Cat#226).

SUPPORT

SUPPORT@GENUINBIOTECH.COM
TEL: +1-540-855-7041

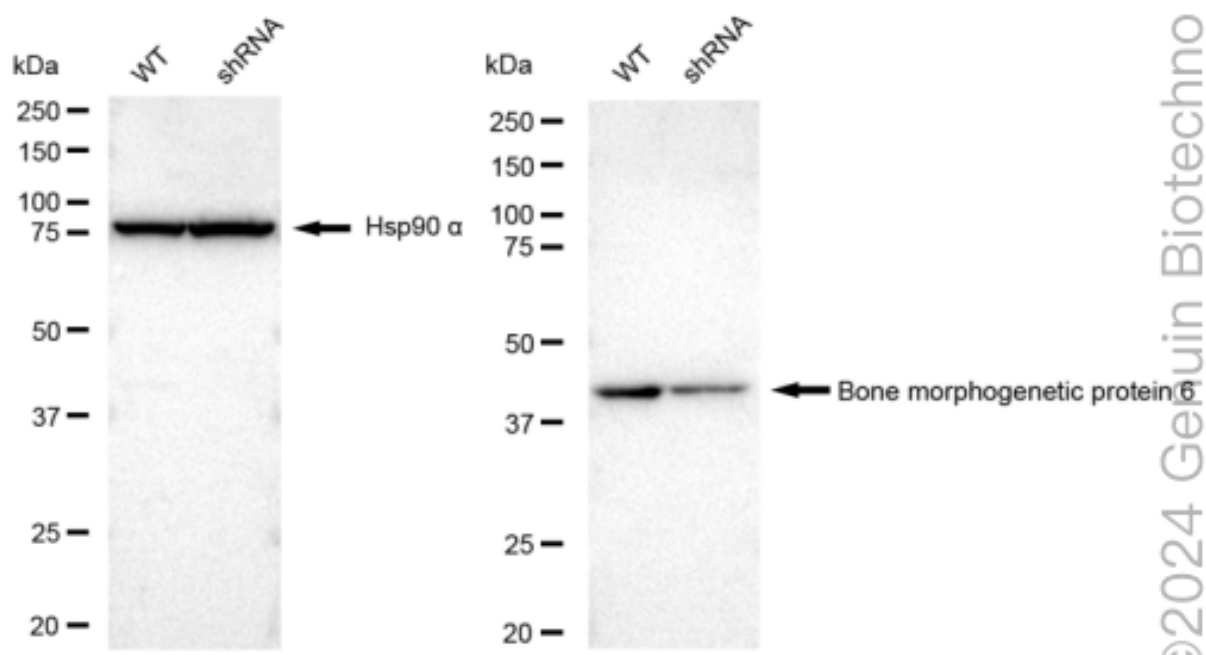
ORDERS

SALES@GENUINBIOTECH.COM
FAX: +1-540-855-7041

WWW.GENUINBIOTECH.COM

KD-Validated Anti-Bone morphogenetic protein 6 Recombinant Rabbit Monoclonal Antibody

PAGE 4



Western blotting analysis using anti-Bone morphogenetic protein 6 antibody (Cat#68616). Bone morphogenetic protein 6 expression in wild type (WT) and Bone morphogenetic protein 6 shRNA knockdown (KD) HeLa cells with 30 µg of total cell lysates. Hsp90 α serves as a loading control. The blot was incubated with anti-Bone morphogenetic protein 6 antibody (Cat#68616, 1:5,000) and HRP-conjugated goat anti-rabbit secondary antibody (Cat#201, 1:20,000) respectively. Image was developed using FeQ™ ECL Substrate Kit (Cat#226).

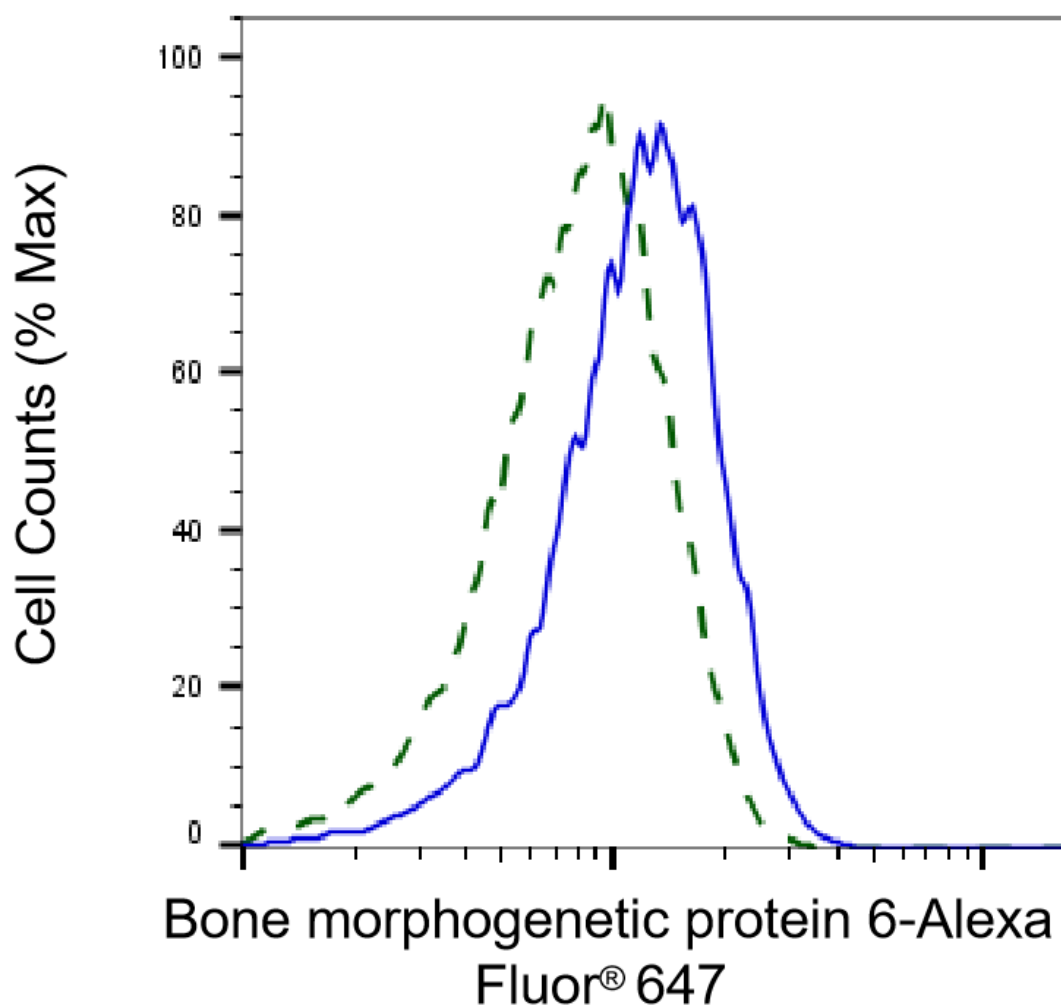
SUPPORT

SUPPORT@GENUINBIOTECH.COM
TEL: +1-540-855-7041

ORDERS

SALES@GENUINBIOTECH.COM
FAX: +1-540-855-7041

WWW.GENUINBIOTECH.COM



Copyright ©2025 Genuin Biotechnologies LLC

Validation of Bone morphogenetic protein 6 knockdown using flow cytometry. Wild-type(WT, Blue) and knockdown(KD, Green) HeLa cells were stained with anti-Bone morphogenetic protein 6 antibody (Cat#68616, 1:2,000) and analyzed using BD flow cytometer.