

# KD-Validated Anti-Aquaporin 1 Recombinant Rabbit Monoclonal Antibody



**Catalog #: 68661**

## Aliases

AQP1; Aquaporin 1 (Colton Blood Group); CHIP28; Aquaporin 1 (Channel-Forming Integral Protein, 28kDa, CO Blood Group); Water Channel Protein For Red Blood Cells And Kidney Proximal Tubule; Urine Water Channel; Aquaporin-CHIP; Aquaporin-1; CO; Aquaporin 1 (Channel-Forming Integral Protein, 28kDa); Channel-Like Integral Membrane Protein, 28-KDa; Aquaporin 1, Colton Blood Group Antigen; Colton Blood Group Antigen; Bloodgroup CO Protein; Colton Blood Group; Aquaporin 1; AQP-CHIP; AQP-1

## Background

Gene Name: AQP1

NCBI Gene Entry: [358](#)

UniProt Entry: [P29972](#)

## Application Information

Molecular Weight: Predicted, 29 kDa, observed, 28 kDa

Clonality: Rabbit monoclonal antibody

Clone ID: 23GB1850

Species Reactivity: Human

Applications Tested: Western blotting (WB), flow cytometry (FCM), immunocytochemistry (IC)

## Immunogen

A synthesized peptide derived from human AQP1

## Isotype

Rabbit IgG

## Storage Buffer

Supplied in PBS (pH 7.4) containing 50% glycerol, and 0.02% sodium azide.

## Storage

Store at -20 °C for one year.

## Recommended Dilutions

Western Blotting (WB): 1:1,000-1:5,000

Flow Cytometry (FCM): 1:2,000

Immunocytochemistry (IC): 1:100-1:1,000

---

### SUPPORT

SUPPORT@GENUINBIOTECH.COM  
TEL: +1-540-855-7041

### ORDERS

SALES@GENUINBIOTECH.COM  
FAX: +1-540-855-7041

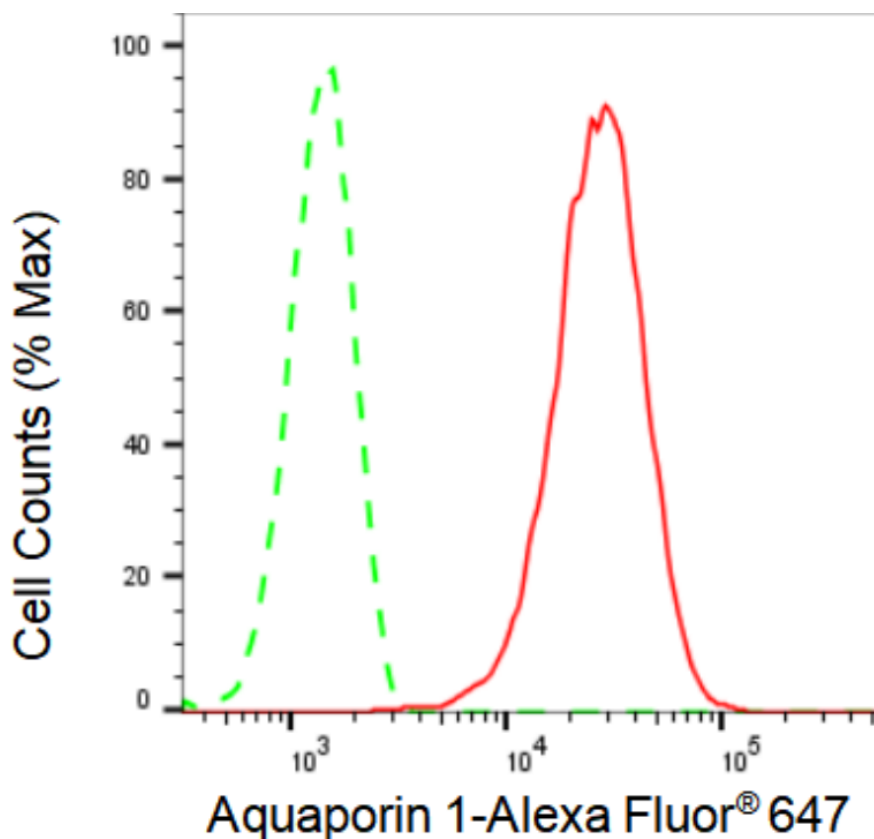
[WWW.GENUINBIOTECH.COM](http://WWW.GENUINBIOTECH.COM)

# KD-Validated Anti-Aquaporin 1 Recombinant Rabbit Monoclonal Antibody

PAGE 2

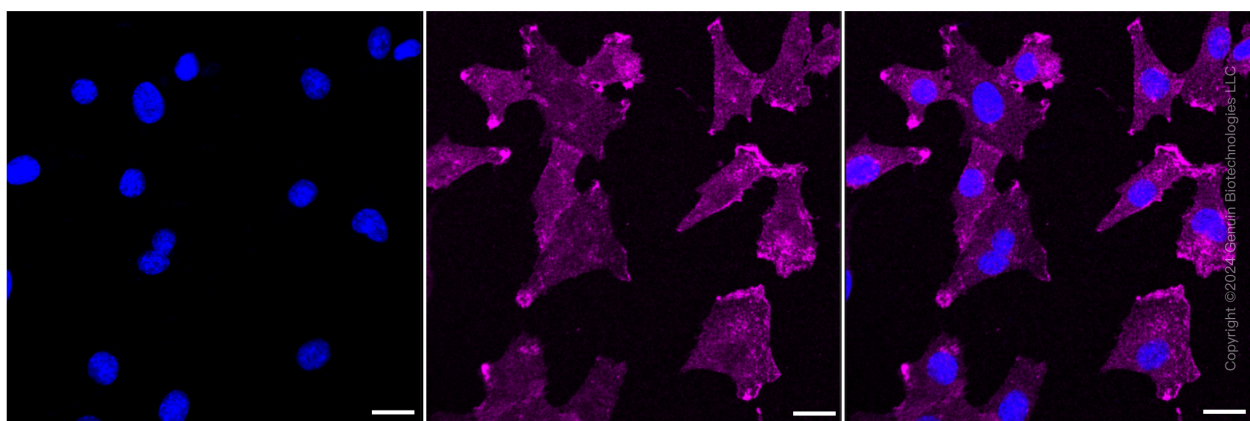
**Note:** This product is for research use only.

## Validation Data



Copyright ©2024 Genuin Biotechnologies LLC

Flow cytometric analysis of Aquaporin 1 expression in C2C12 cells using Aquaporin 1 antibody (Cat#68661, 1:2,000). Green, isotype control; red, Aquaporin 1.



Copyright ©2024 Genuin Biotechnologies LLC

Immunocytochemical staining of C2C12 cells with Aquaporin 1 antibody (Cat#68661, 1:1,000). Nuclei were stained blue with DAPI; Aquaporin 1 was stained magenta with Alexa Fluor® 647. Images were taken using Leica stellaris 5. Protein abundance based on laser Intensity and smart gain: Medium. Scale bar: 20  $\mu$ m.

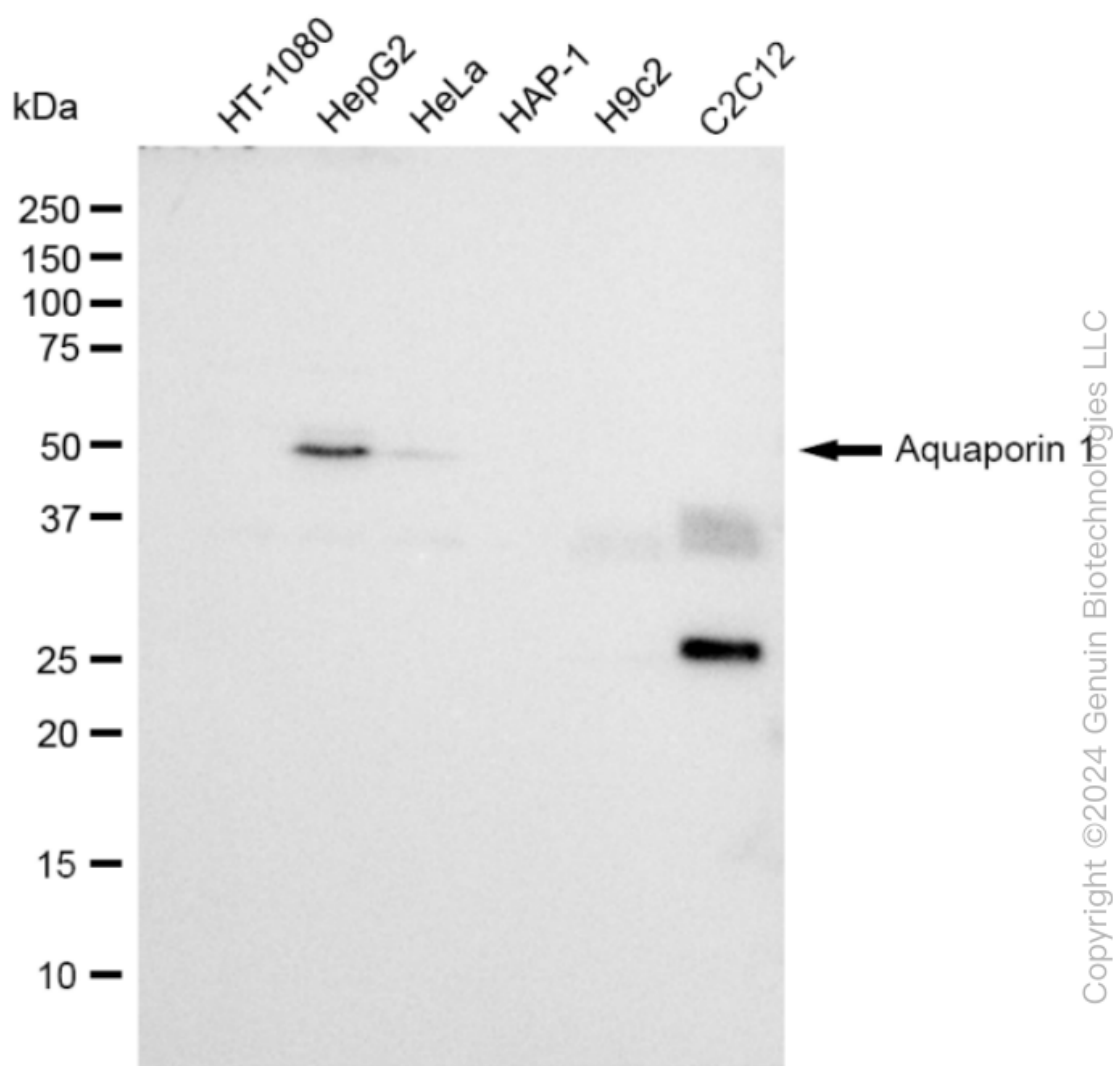
### SUPPORT

SUPPORT@GENUINBIOTECH.COM  
TEL: +1-540-855-7041

### ORDERS

SALES@GENUINBIOTECH.COM  
FAX: +1-540-855-7041

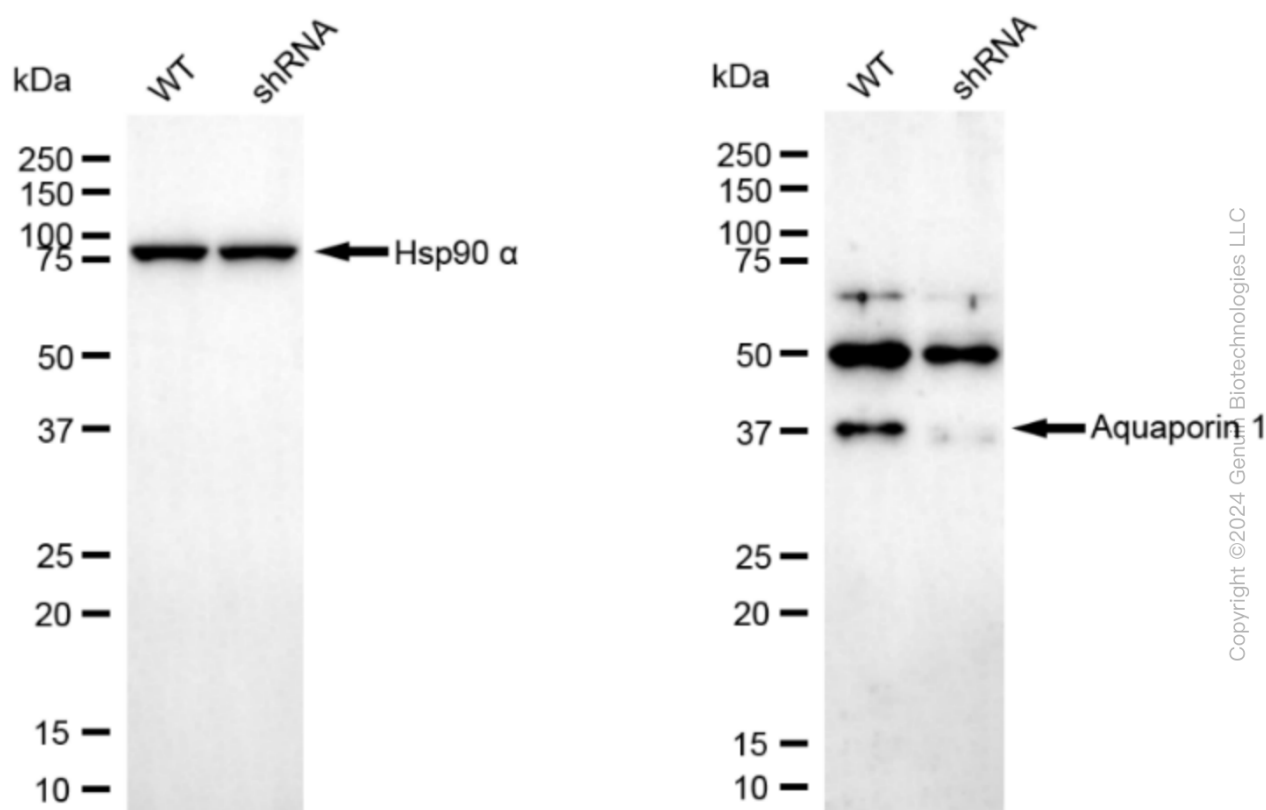
[WWW.GENUINBIOTECH.COM](http://WWW.GENUINBIOTECH.COM)



Western blotting analysis using anti-Aquaporin 1 antibody (Cat#68661). Total cell lysates (30 µg) from various cell lines were loaded and separated by SDS-PAGE. The blot was incubated with anti-Aquaporin 1 antibody (Cat#68661, 1:5,000) and HRP-conjugated goat anti-rabbit secondary antibody (Cat#201, 1:20,000) respectively. Image was developed using FeQ™ ECL Substrate Kit (Cat#226).

## KD-Validated Anti-Aquaporin 1 Recombinant Rabbit Monoclonal Antibody

PAGE 4



Western blotting analysis using anti-Aquaporin 1 antibody (Cat#68661). Aquaporin 1 expression in wild type (WT) and aquaporin 1 shRNA knockdown (KD) HeLa cells with 30 µg of total cell lysates. β-Tubulin serves as a loading control. The blot was incubated with anti-Aquaporin 1 antibody (Cat#68661, 1:5,000) and HRP-conjugated goat anti-rabbit secondary antibody (Cat#201, 1:20,000) respectively. Image was developed using FeQ™ ECL Substrate Kit (Cat#226).

### SUPPORT

SUPPORT@GENUINBIOTECH.COM  
TEL: +1-540-855-7041

### ORDERS

SALES@GENUINBIOTECH.COM  
FAX: +1-540-855-7041

[WWW.GENUINBIOTECH.COM](http://WWW.GENUINBIOTECH.COM)