

KD-Validated Anti-LAMP2 Recombinant Rabbit Monoclonal Antibody



Catalog #: 68679

Aliases

LAMP2; Lysosomal Associated Membrane Protein 2; Lysosome-Associated Membrane Glycoprotein; CD107 Antigen-Like Family Member B; CD107b; LAMP-2; LGP-96; Lysosomal-Associated Membrane Protein 2; Lysosome-Associated Membrane Protein 2; CD107b Antigen; LGP110; CD107B; LAMPB; DND

Background

Gene Name: LAMP2

NCBI Gene Entry: [3920](#)

UniProt Entry: [P13473](#)

Application Information

Molecular Weight: Predicted, 45 kDa, observed, 120 kDa

Clonality: Rabbit monoclonal antibody

Clone ID: 23GB4040

Species Reactivity: Human, mouse, rat

Applications Tested: Western blotting (WB), flow cytometry (FCM), immunocytochemistry (IC)

Immunogen

A synthesized peptide derived from human LAMP2

Isotype

Rabbit IgG

Storage Buffer

Supplied in PBS (pH 7.4) containing 50% glycerol, and 0.02% sodium azide.

Storage

Store at -20 °C for one year.

Recommended Dilutions

Western Blotting (WB): 1:1,000-1:5,000

Flow Cytometry (FCM): 1:2,000

Immunocytochemistry (IC): 1:100-1:1,000

SUPPORT

SUPPORT@GENUINBIOTECH.COM
TEL: +1-540-855-7041

ORDERS

SALES@GENUINBIOTECH.COM
FAX: +1-540-855-7041

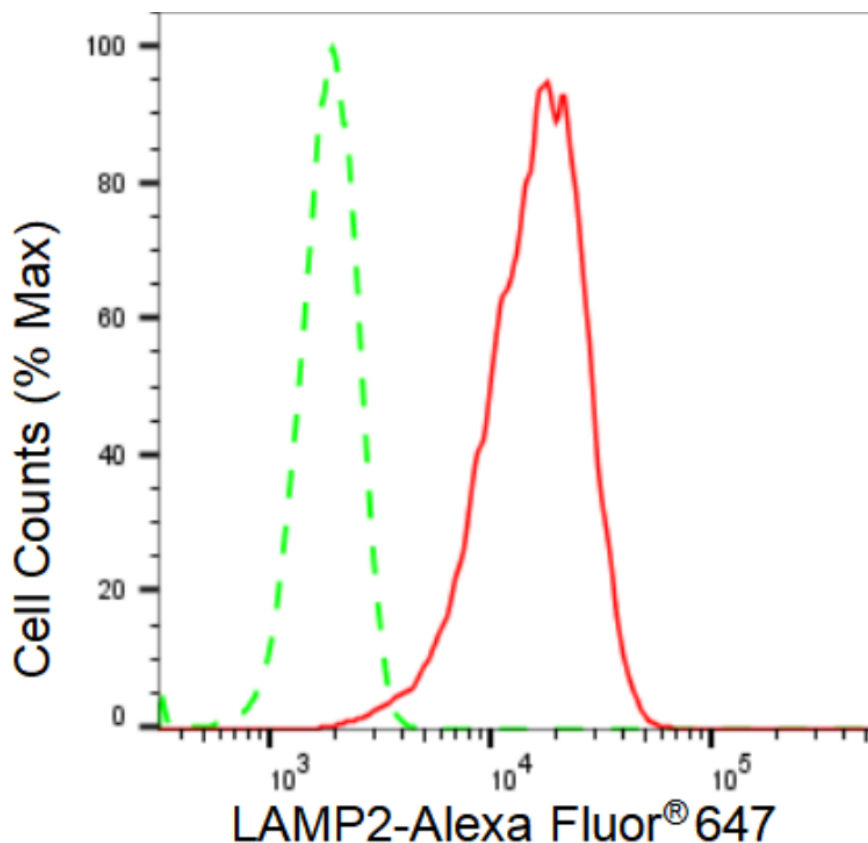
WWW.GENUINBIOTECH.COM

KD-Validated Anti-LAMP2 Recombinant Rabbit Monoclonal Antibody

PAGE 2

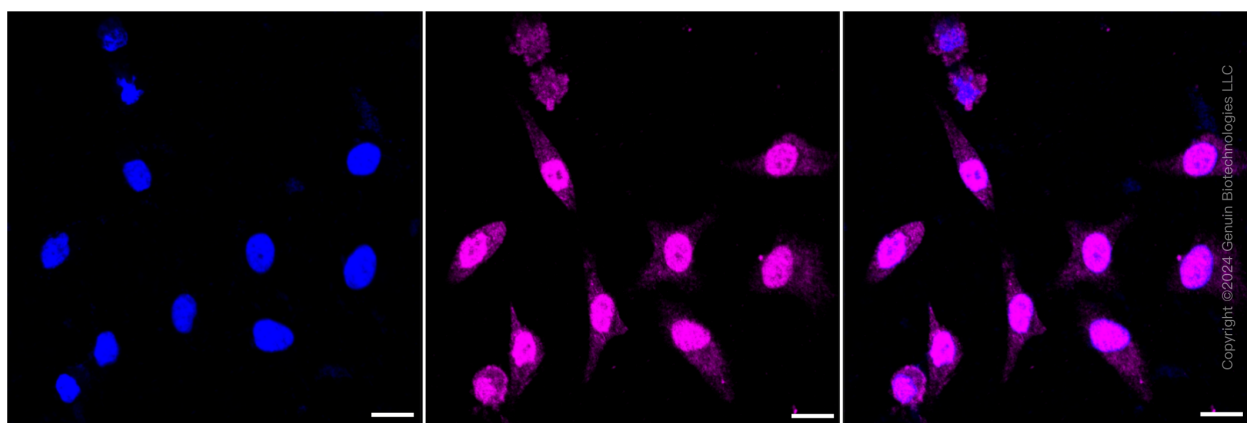
Note: This product is for research use only.

Validation Data



Copyright ©2024 Genuin Biotechnologies LLC

Flow cytometric analysis of LAMP2 expression in HeLa cells using LAMP2 antibody (Cat#68679, 1:2,000). Green, isotype control; red, LAMP2.



Copyright ©2024 Genuin Biotechnologies LLC

Immunocytochemical staining of HeLa cells with LAMP2 antibody (Cat#68679, 1:1,000). Nuclei were stained blue with DAPI; LAMP2 was stained magenta with Alexa Fluor® 647. Images were taken using Leica stellaris 5. Protein abundance based on laser Intensity and smart gain: Medium. Scale bar: 20 μm.

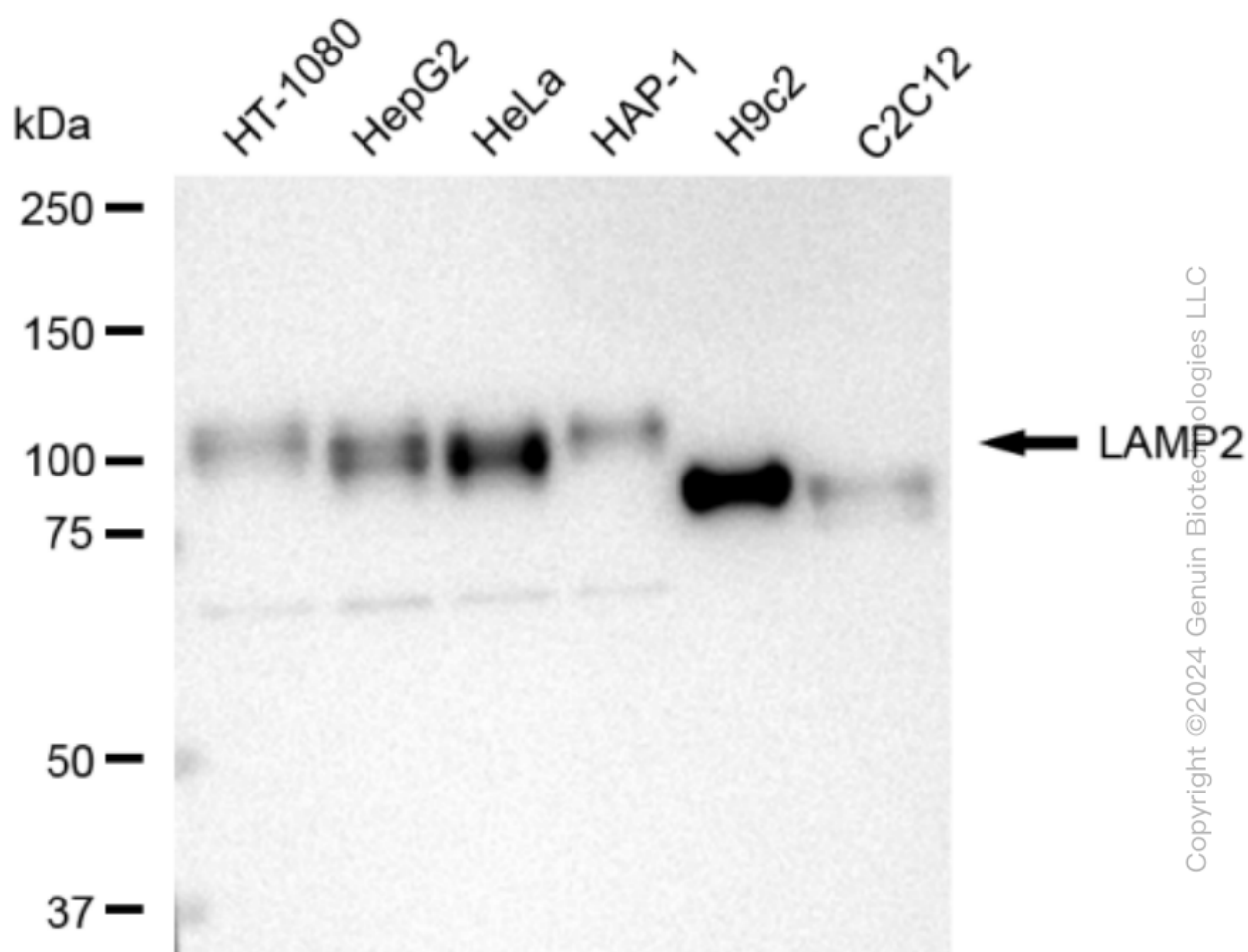
SUPPORT

SUPPORT@GENUINBIOTECH.COM
TEL: +1-540-855-7041

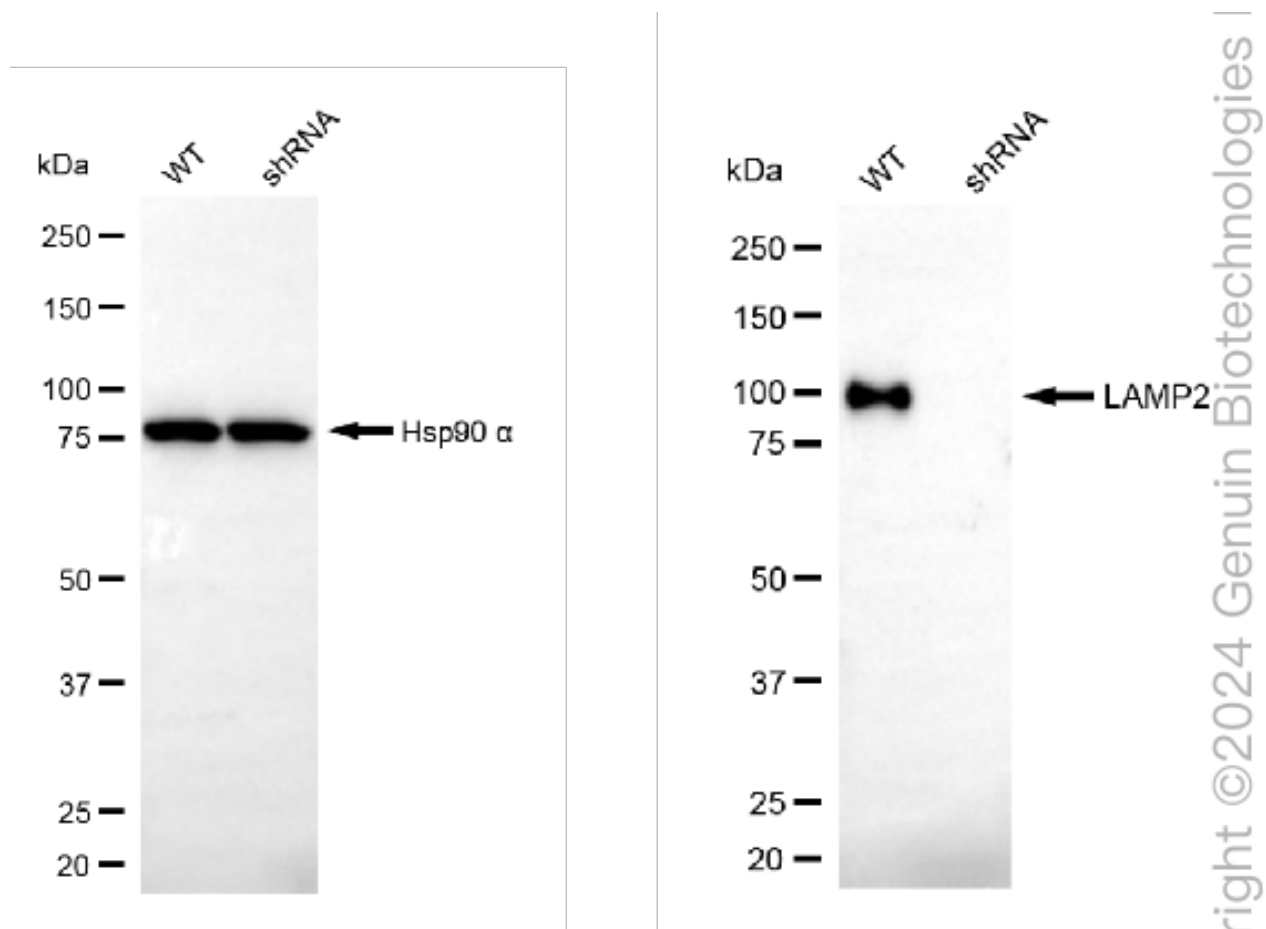
ORDERS

SALES@GENUINBIOTECH.COM
FAX: +1-540-855-7041

WWW.GENUINBIOTECH.COM



Western blotting analysis using anti-LAMP2 antibody (Cat#68679). Total cell lysates (30 μ g) from various cell lines were loaded and separated by SDS-PAGE. The blot was incubated with anti-LAMP2 antibody (Cat#68679, 1:5,000) and HRP-conjugated goat anti-rabbit secondary antibody (Cat#201, 1:20,000) respectively. Image was developed using FeQ™ ECL Substrate Kit (Cat#226).



Western blotting analysis using anti-LAMP2 antibody (Cat#68679). LAMP2 expression in wild type (WT) and LAMP2 shRNA knockdown (KD) HeLa cells with 30 µg of total cell lysates. β-Tubulin serves as a loading control. The blot was incubated with anti-LAMP2 antibody (Cat#68679, 1:5,000) and HRP-conjugated goat anti-rabbit secondary antibody (Cat#201, 1:20,000) respectively. Image was developed using FeQ™ ECL Substrate Kit (Cat#226).