

KD-Validated Anti-BubR1 Recombinant Rabbit Monoclonal Antibody



Catalog #: 68711

Aliases

BUB1 Mitotic Checkpoint Serine/Threonine Kinase B; BUBR1; MAD3L; SSK1; Bub1A; Mitotic Checkpoint Serine/Threonine-Protein Kinase BUB1 Beta; MAD3/BUB1-Related Protein Kinase; Mitotic Checkpoint Kinase MAD3L; HBUBR1; Budding Uninhibited By Benzimidazoles 1 (Yeast Homolog), Beta; Budding Uninhibited By Benzimidazoles 1 Homolog Beta (Yeast); Budding Uninhibited By Benzimidazoles 1 Homolog Beta; BUB1B, Mitotic Checkpoint Serine/Threonine Kinase; Protein SSK1; EC 2.7.11.1; BUB1beta; MVA1

Background

Gene Name: BUB1B

NCBI Gene Entry: [701](#)

UniProt Entry: [O60566](#)

Application Information

Molecular Weight: Predicted, 120 kDa, observed, 120 kDa

Clonality: Rabbit monoclonal antibody

Clone ID: 23GB1640

Species Reactivity: Human

Applications Tested: Western blotting (WB), flow cytometry (FCM), immunocytochemistry (IC)

Immunogen

A synthesized peptide derived from human BubR1

Isotype

Rabbit IgG

Storage Buffer

Supplied in PBS (pH 7.4) containing 50% glycerol, and 0.02% sodium azide.

Storage

Store at -20 °C for one year.

Recommended Dilutions

Western Blotting (WB): 1:1,000-1:5,000

Flow Cytometry (FCM): 1:2,000

Immunocytochemistry (IC): 1:100-1:1,000

SUPPORT

SUPPORT@GENUINBIOTECH.COM
TEL: +1-540-855-7041

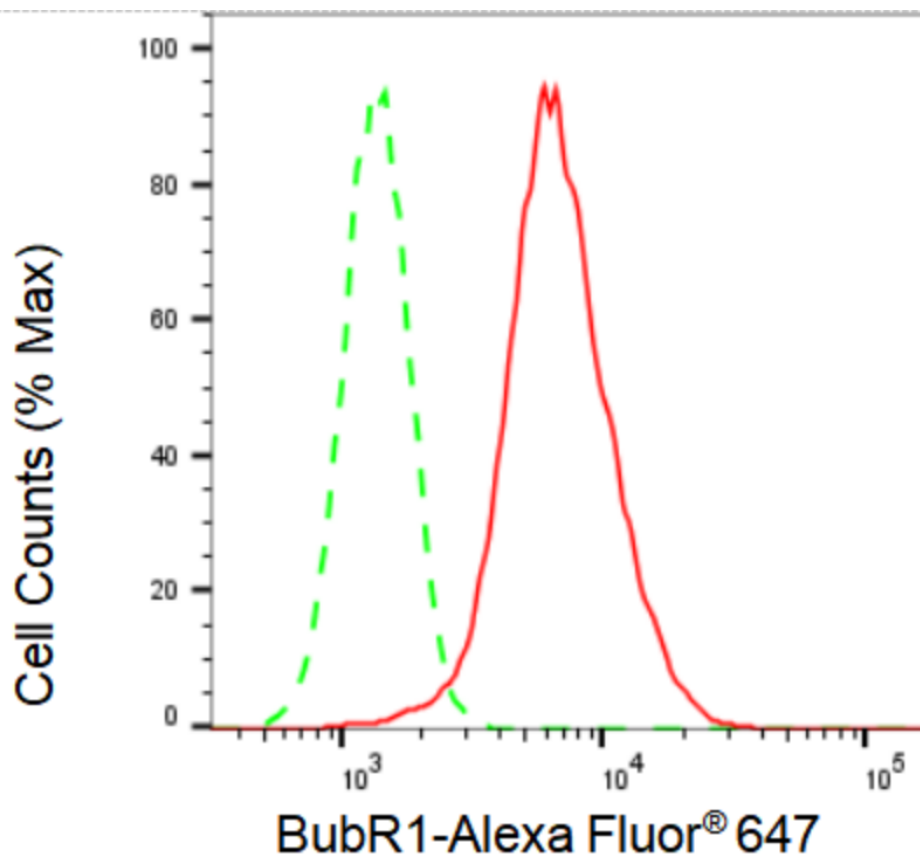
ORDERS

SALES@GENUINBIOTECH.COM
FAX: +1-540-855-7041

WWW.GENUINBIOTECH.COM

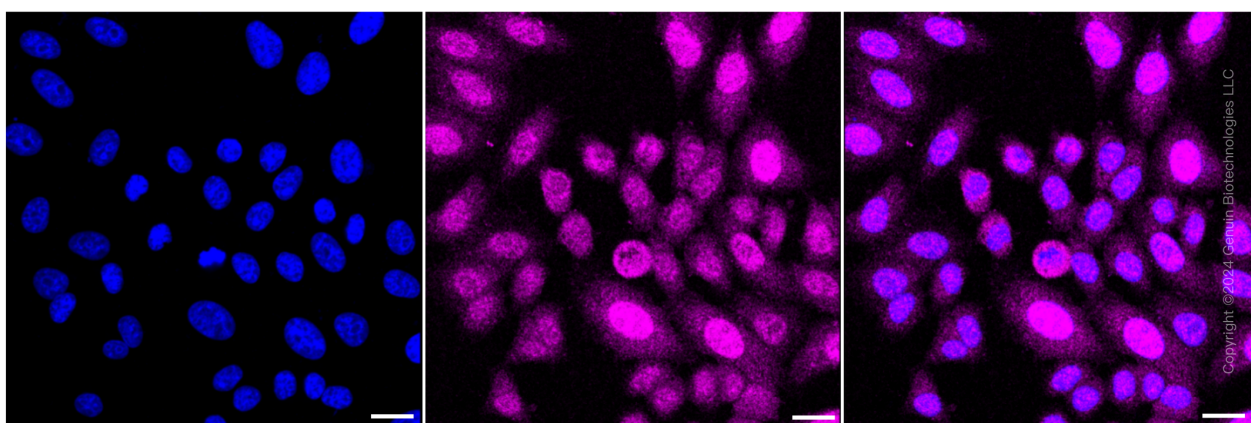
Note: This product is for research use only.

Validation Data



Copyright ©2024 Genuin Biotechnologies LLC

Flow cytometric analysis of BubR1 expression in HepG2 cells using BubR1 antibody (Cat#68711, 1:2,000). Green, isotype control; red, BubR1.



Immunocytochemical staining of HepG2 cells with BubR1 antibody (Cat#68711, 1:1,000). Nuclei were stained blue with DAPI; BubR1 was stained magenta with Alexa Fluor® 647. Images were taken using Leica stellaris 5. Protein abundance based on laser Intensity and smart gain: Medium.

SUPPORT

SUPPORT@GENUINBIOTECH.COM
TEL: +1-540-855-7041

ORDERS

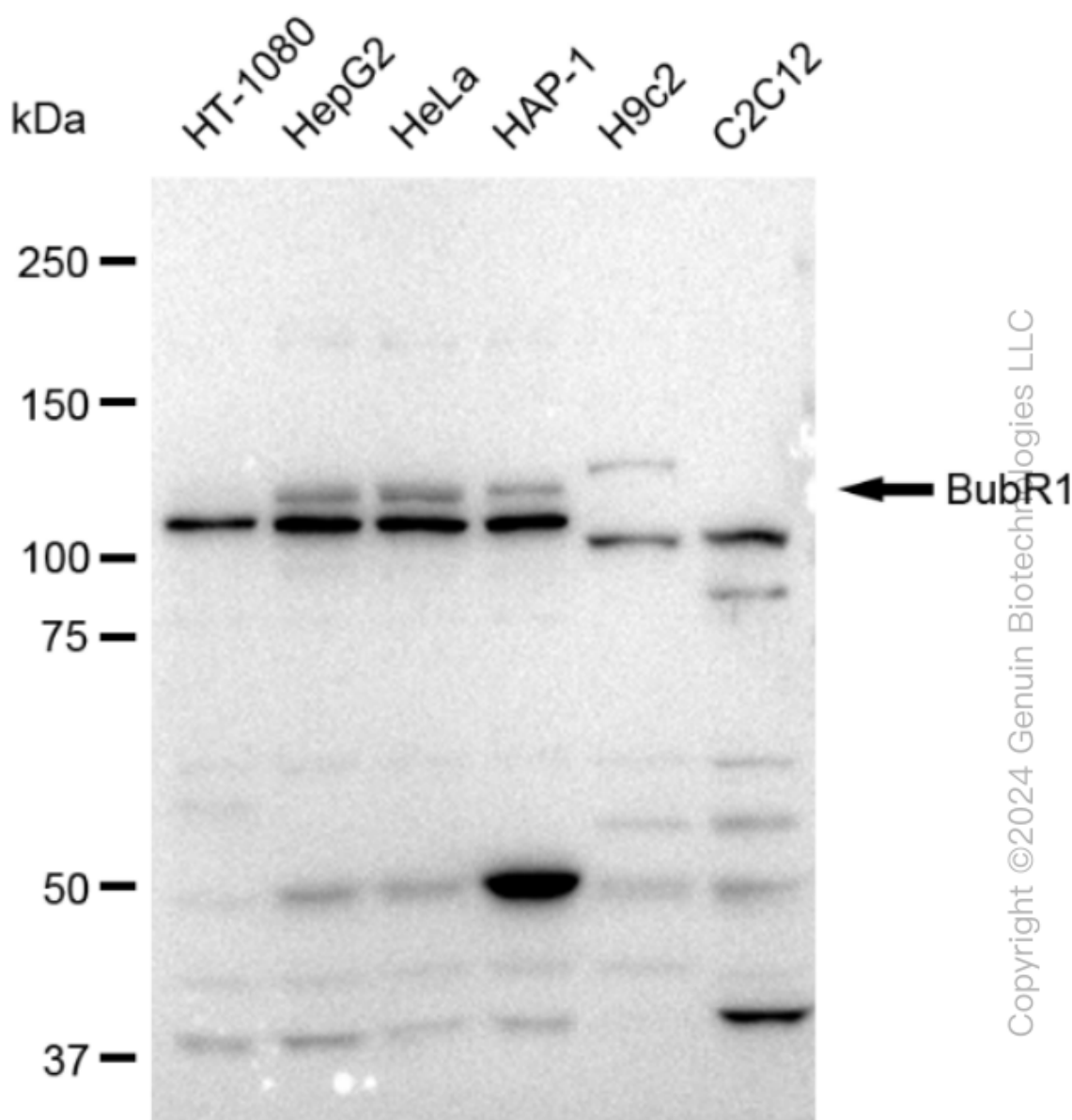
SALES@GENUINBIOTECH.COM
FAX: +1-540-855-7041

WWW.GENUINBIOTECH.COM

KD-Validated Anti-BubR1 Recombinant Rabbit Monoclonal Antibody

PAGE 3

Scale bar: 20 μ m.



Western blotting analysis using anti-BubR1 antibody (Cat#68711). Total cell lysates (30 μ g) from various cell lines were loaded and separated by SDS-PAGE. The blot was incubated with anti-BCL11 transcription factor B antibody (Cat#68711, 1:5,000) and HRP-conjugated goat anti-rabbit secondary antibody (Cat#201, 1:20,000) respectively. Image was developed using FeQ™ ECL Substrate Kit (Cat#226).

SUPPORT

SUPPORT@GENUINBIOTECH.COM
TEL: +1-540-855-7041

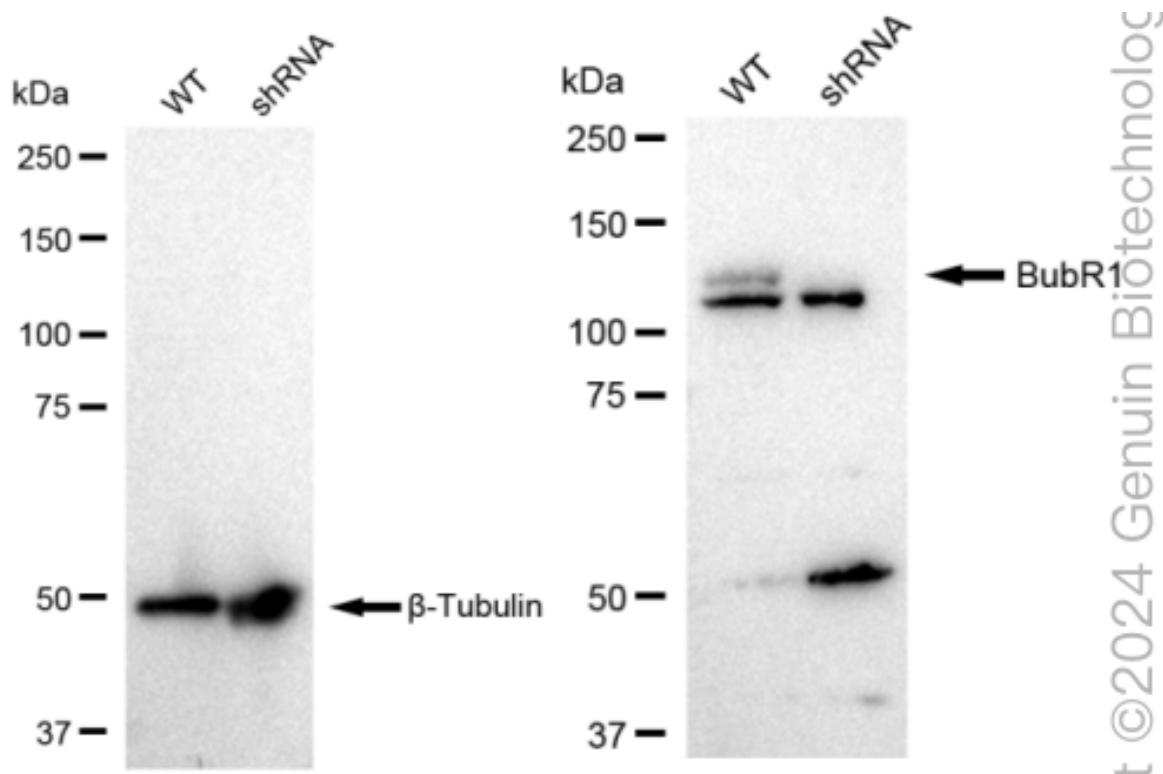
ORDERS

SALES@GENUINBIOTECH.COM
FAX: +1-540-855-7041

WWW.GENUINBIOTECH.COM

KD-Validated Anti-BubR1 Recombinant Rabbit Monoclonal Antibody

PAGE 4



Western blotting analysis using anti-BubR1 antibody (Cat#68711). BubR1 expression in wild type (WT) and BubR1 shRNA knockdown (KD) HeLa cells with 30 μ g of total cell lysates. β -Tubulin serves as a loading control. The blot was incubated with anti-BubR1 antibody (Cat#68711, 1:5000) and HRP-conjugated goat anti-rabbit secondary antibody (Cat#201, 1:20000) respectively. Image was developed using FeQ™ ECL Substrate Kit (Cat#226).

SUPPORT

SUPPORT@GENUINBIOTECH.COM
TEL: +1-540-855-7041

ORDERS

SALES@GENUINBIOTECH.COM
FAX: +1-540-855-7041

WWW.GENUINBIOTECH.COM