

KD-Validated Anti-Tuberin Rabbit Monoclonal Antibody



Catalog #: 68712

Aliases

Tuberin; PPP1R160; TSC4; LAM; Protein Phosphatase 1, Regulatory Subunit 160; Tuberous Sclerosis 2 Protein; Tuberous Sclerosis 2

Background

Gene Name: TSC2

NCBI Gene Entry: [7249](#)

UniProt Entry: [P49815](#)

Application Information

Molecular Weight: Predicted, 201 kDa, observed, 201 kDa

Clonality: Rabbit monoclonal antibody

Clone ID: 23GB1120

Species Reactivity: Human, mouse, rat

Applications Tested: Western blotting (WB), flow cytometry (FCM)

Immunogen

Recombinant protein of human Tuberin

Isotype

Rabbit IgG

Storage Buffer

Supplied in PBS (pH 7.4) containing 50% glycerol, and 0.02% sodium azide.

Storage

Store at -20 °C for one year.

Recommended Dilutions

Western Blotting (WB): 1:1,000-1:2,500

Flow Cytometry (FCM): 1:2,000

Note: This product is for research use only.

Validation Data

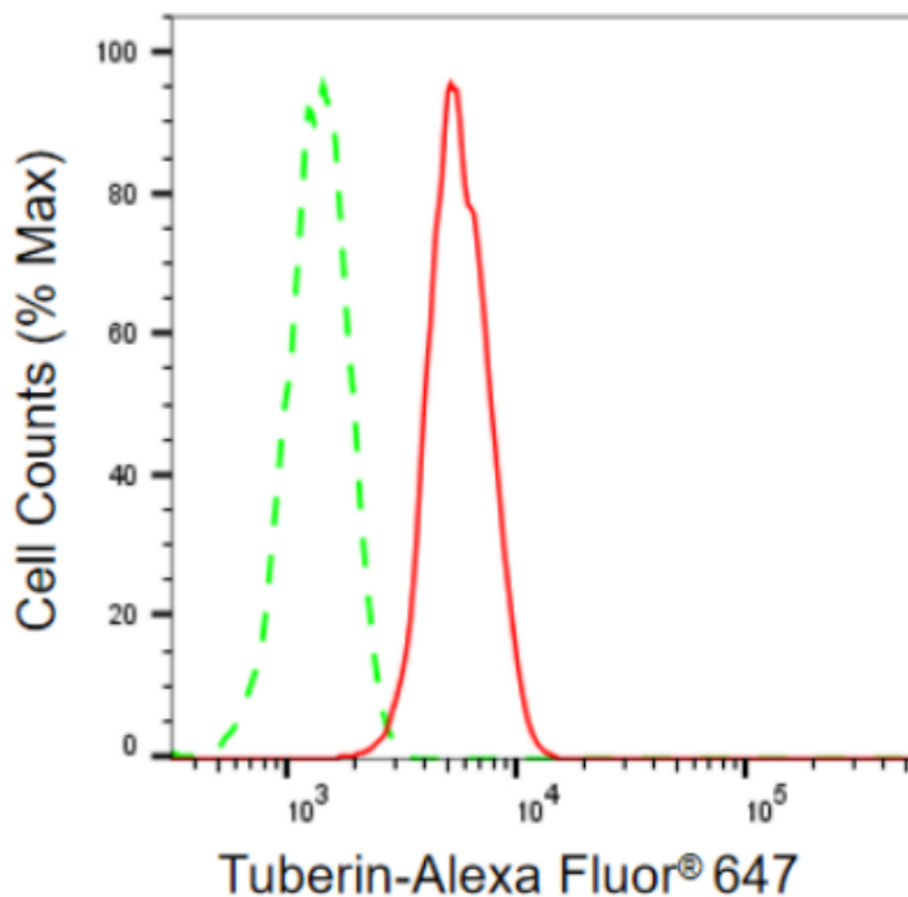
SUPPORT

SUPPORT@GENUINBIOTECH.COM
TEL: +1-540-855-7041

ORDERS

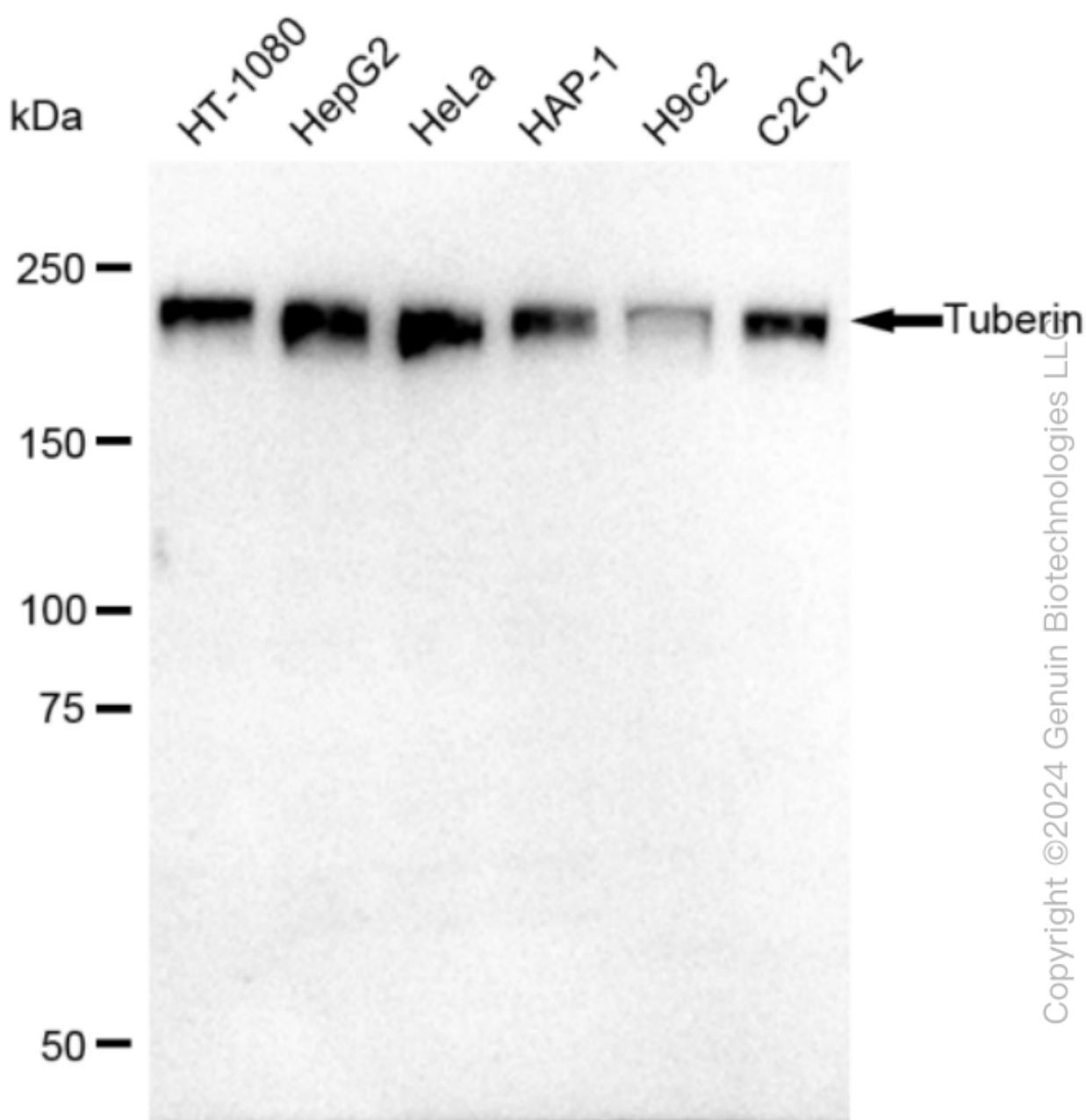
SALES@GENUINBIOTECH.COM
FAX: +1-540-855-7041

WWW.GENUINBIOTECH.COM



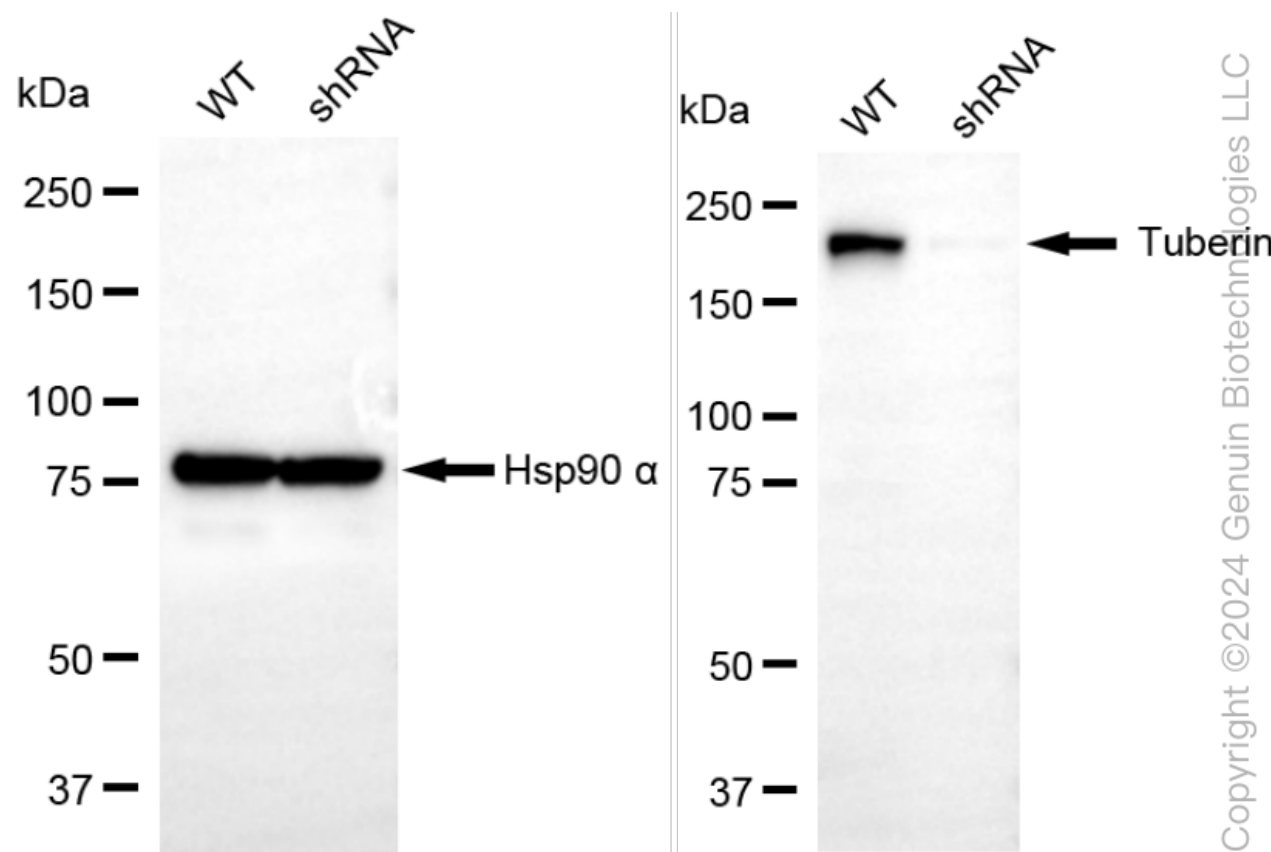
Copyright ©2024 Genuin Biotechnologies LLC

Flow cytometric analysis of Tuberin expression in HepG2 cells using Tuberin antibody (Cat#68712, 1:2,000). Green, isotype control; Red, Tuberin.

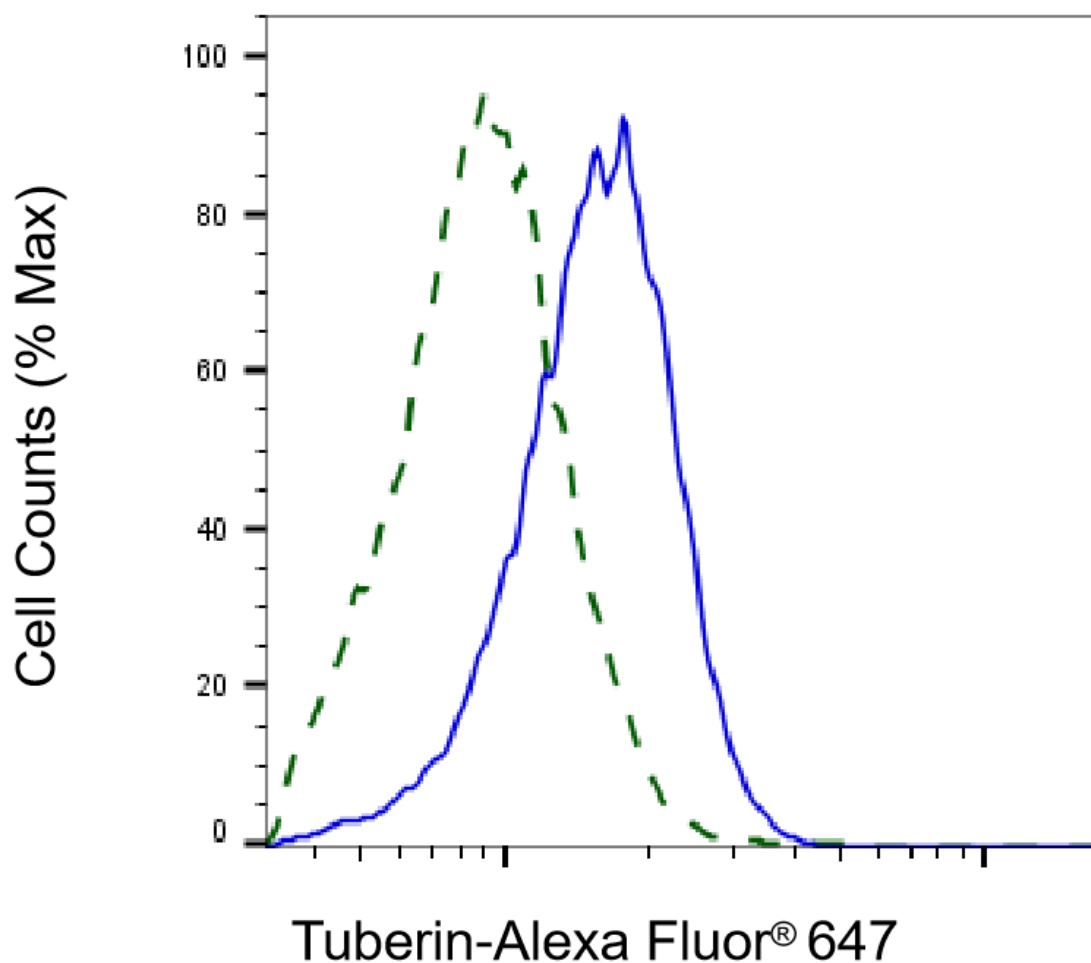


Copyright ©2024 Genuin Biotechnologies LLC

Western blotting analysis using anti-Tuberin antibody (Cat#68712). Total cell lysates (30 µg) from various cell lines were loaded and separated by SDS-PAGE. The blot was incubated with anti-Tuberin antibody (Cat#89712, 1:2,500) and HRP-conjugated goat anti-rabbit secondary antibody (Cat#201, 1:50,000) respectively. Image was developed using FeQ™ ECL Substrate Kit (Cat#226).



Western blotting analysis using anti-Tuberin antibody (Cat#68712). Tuberin expression in wild type (WT) and Tuberin shRNA knockdown (KD) HeLa cells with 30 μ g of total cell lysates. β -Tubulin serves as a loading control. The blot was incubated with anti-Tuberin antibody (Cat#68712, 1:5,000) and HRP-conjugated goat anti-rabbit secondary antibody (Cat#201, 1:20,000) respectively. Image was developed using FeQ™ ECL Substrate Kit (Cat#226).



Copyright ©2025 Genuin Biotechnologies LLC

Validation of Tuberin knockdown using flow cytometry. Wild-type(WT, Blue) and knockdown(KD, Green) HeLa cells were stained with anti-Tuberin antibody (Cat#68712, 1:2,000) and analyzed using BD flow cytometer.