

# KD-Validated Anti-Ferritin heavy chain 1 Recombinant Rabbit Monoclonal Antibody



**Catalog #: 68721**

## Aliases

FTH1; Ferritin Heavy Chain 1; FTH; PIG15; FTHL6; PLIF; FHC; Cell Proliferation-Inducing Gene 15 Protein; Proliferation-Inducing Protein 15; Placenta Immunoregulatory Factor; Ferritin, Heavy; Polypeptide 1; Ferritin Heavy Chain; Ferritin H Subunit; Apoferritin; EC 1.16.3.1; H-Ferritin; HFE5

## Background

Gene Name: FTH1

NCBI Gene Entry: [2495](#)

UniProt Entry: [P02794](#)

## Application Information

Molecular Weight: Predicted, 21 kDa, observed, 15 kDa

Clonality: Rabbit monoclonal antibody

Clone ID: 23GB1835

Species Reactivity: Human, mouse, rat

Applications Tested: Western blotting (WB), flow cytometry (FCM), immunocytochemistry (IC)

## Immunogen

A synthesized peptide derived from human Ferritin

## Isotype

Rabbit IgG

## Storage Buffer

Supplied in PBS (pH 7.4) containing 50% glycerol, and 0.02% sodium azide.

## Storage

Store at -20 °C for one year.

## Recommended Dilutions

Western Blotting (WB): 1:1,000-1:5,000

Flow Cytometry (FCM): 1:2,000

Immunocytochemistry (IC): 1:100-1:1,000

---

### SUPPORT

SUPPORT@GENUINBIOTECH.COM  
TEL: +1-540-855-7041

### ORDERS

SALES@GENUINBIOTECH.COM  
FAX: +1-540-855-7041

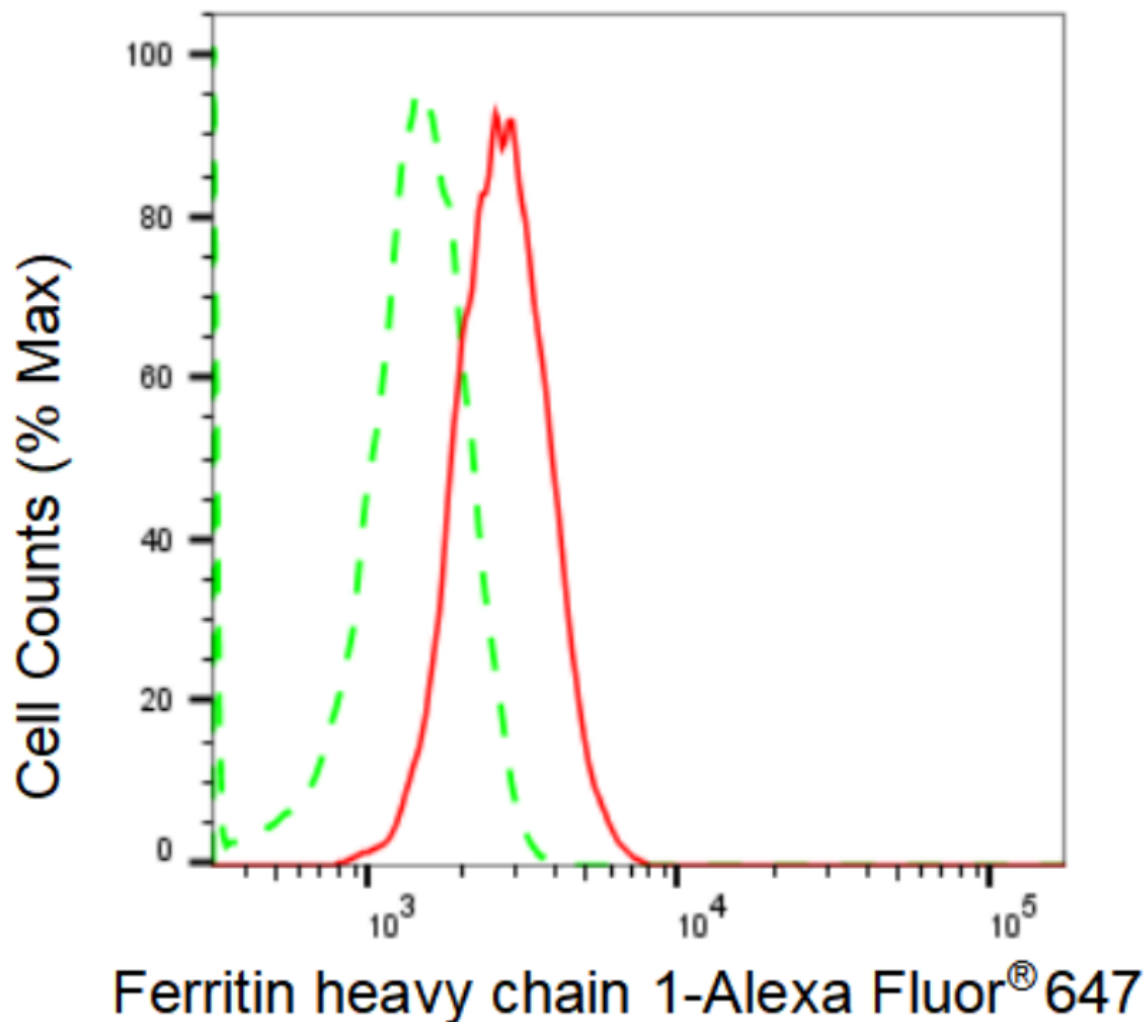
[WWW.GENUINBIOTECH.COM](http://WWW.GENUINBIOTECH.COM)

# KD-Validated Anti-Ferritin heavy chain 1 Recombinant Rabbit Monoclonal Antibody

PAGE 2

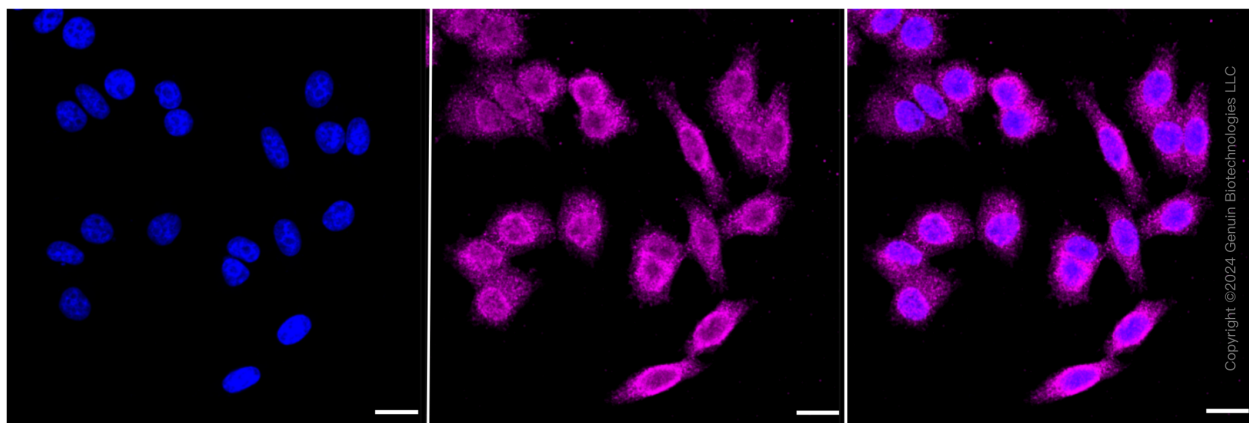
**Note:** This product is for research use only.

## Validation Data



Copyright ©2024 Genuin Biotechnologies LLC

Flow cytometric analysis of Ferritin heavy chain 1 expression in HepG2 cells using Ferritin heavy chain 1 antibody (Cat#68721, 1:2,000). Green, isotype control; red, Ferritin heavy chain 1.



### SUPPORT

SUPPORT@GENUINBIOTECH.COM  
TEL: +1-540-855-7041

### ORDERS

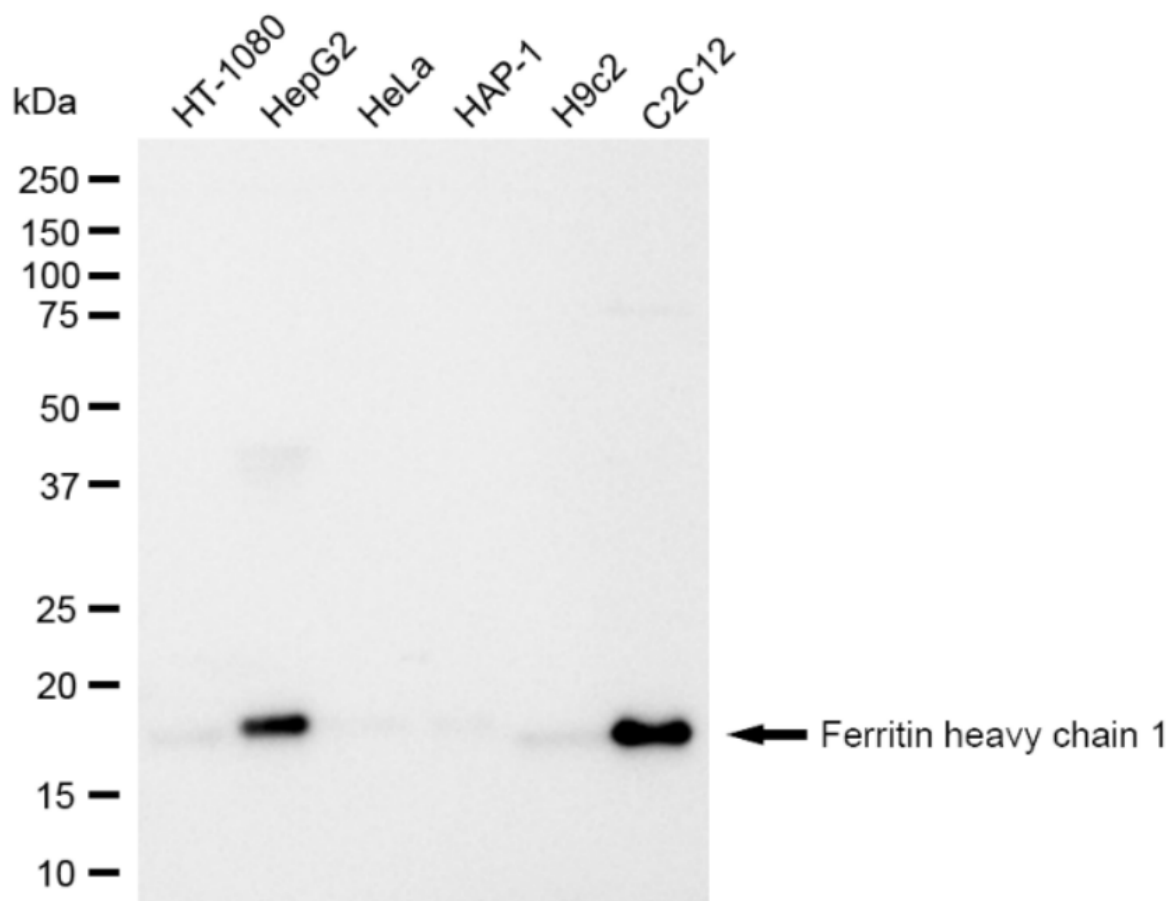
SALES@GENUINBIOTECH.COM  
FAX: +1-540-855-7041

WWW.GENUINBIOTECH.COM

## KD-Validated Anti-Ferritin heavy chain 1 Recombinant Rabbit Monoclonal Antibody

PAGE 3

Immunocytochemical staining of HepG2 cells with Ferritin heavy chain 1 antibody (Cat#68721, 1:1,000). Nuclei were stained blue with DAPI; Ferritin heavy chain 1 was stained magenta with Alexa Fluor® 647. Images were taken using Leica stellaris 5. Protein abundance based on laser Intensity and smart gain: Medium. Scale bar: 20  $\mu$ m.



Western blotting analysis using anti-Ferritin heavy chain 1 antibody (Cat#68721). Total cell lysates (30  $\mu$ g) from various cell lines were loaded and separated by SDS-PAGE. The blot was incubated with anti-Ferritin heavy chain 1 antibody (Cat#68721, 1:5,000) and HRP-conjugated goat anti-rabbit secondary antibody (Cat#201, 1:20,000) respectively. Image was developed using FeQ™ ECL Substrate Kit (Cat#226).

### SUPPORT

SUPPORT@GENUINBIOTECH.COM  
TEL: +1-540-855-7041

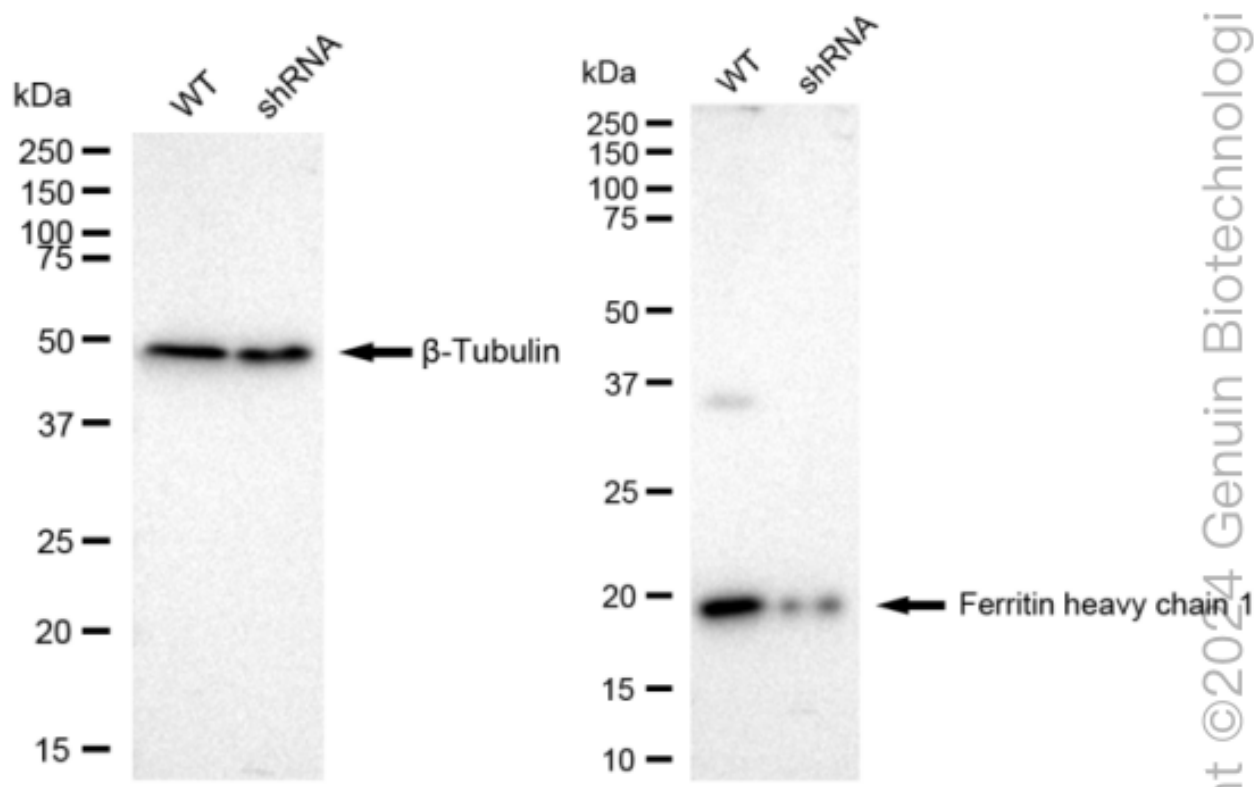
### ORDERS

SALES@GENUINBIOTECH.COM  
FAX: +1-540-855-7041

WWW.GENUINBIOTECH.COM

## KD-Validated Anti-Ferritin heavy chain 1 Recombinant Rabbit Monoclonal Antibody

PAGE 4



Western blotting analysis using anti-Ferritin heavy chain 1 antibody (Cat#68721). Ferritin heavy chain 1 expression in wild type (WT) and ferritin heavy chain 1 shRNA knockdown (KD) HeLa cells with 30  $\mu$ g of total cell lysates.  $\beta$ -Tubulin serves as a loading control. The blot was incubated with anti-Ferritin heavy chain 1 antibody (Cat#68721, 1:5,000) and HRP-conjugated goat anti-rabbit secondary antibody (Cat#201, 1:20,000) respectively. Image was developed using FeQ™ ECL Substrate Kit (Cat#226).

### SUPPORT

SUPPORT@GENUINBIOTECH.COM  
TEL: +1-540-855-7041

### ORDERS

SALES@GENUINBIOTECH.COM  
FAX: +1-540-855-7041

WWW.GENUINBIOTECH.COM