

# KD-Validated Anti-Acyl-CoA dehydrogenase short chain Recombinant Rabbit Monoclonal



## Catalog #: 69112

### Aliases

ACADS; Acyl-CoA Dehydrogenase Short Chain; SCAD; ACAD3; Short-Chain Specific Acyl-CoA Dehydrogenase, Mitochondrial; Acyl-Coenzyme A Dehydrogenase, C-2 To C-3 Short Chain; Butyryl-CoA Dehydrogenase; Mitochondrial Short-Chain Specific Acyl-CoA Dehydrogenase; Acyl-CoA Dehydrogenase, C-2 To C-3 Short Chain; Epididymis Secretory Sperm Binding Protein; Unsaturated Acyl-CoA Reductase; EC 1.3.99.2; EC 1.3.8.1; EC 1.3.99

### Background

Gene Name: ACADS

NCBI Gene Entry: [35](#)

UniProt Entry: [P16219](#)

### Application Information

Molecular Weight: Predicted, 44 kDa, observed, 40 kDa

Clonality: Rabbit monoclonal antibody

Clone ID: 23GB1365

Species Reactivity: Human, mouse, rat

Applications Tested: Western blotting (WB), flow cytometry (FCM), immunocytochemistry (IC)

### Immunogen

A synthesized peptide derived from human ACADS / SCAD

### Isotype

Rabbit IgG

### Storage Buffer

Supplied in PBS (pH 7.4) containing 50% glycerol, and 0.02% sodium azide.

### Storage

Store at -20 °C for one year.

### Recommended Dilutions

Western Blotting (WB): 1:1,000-1:5,000

Flow Cytometry (FCM): 1:2,000

Immunocytochemistry (IC): 1:100-1:1,000

---

#### SUPPORT

SUPPORT@GENUINBIOTECH.COM  
TEL: +1-540-855-7041

#### ORDERS

SALES@GENUINBIOTECH.COM  
FAX: +1-540-855-7041

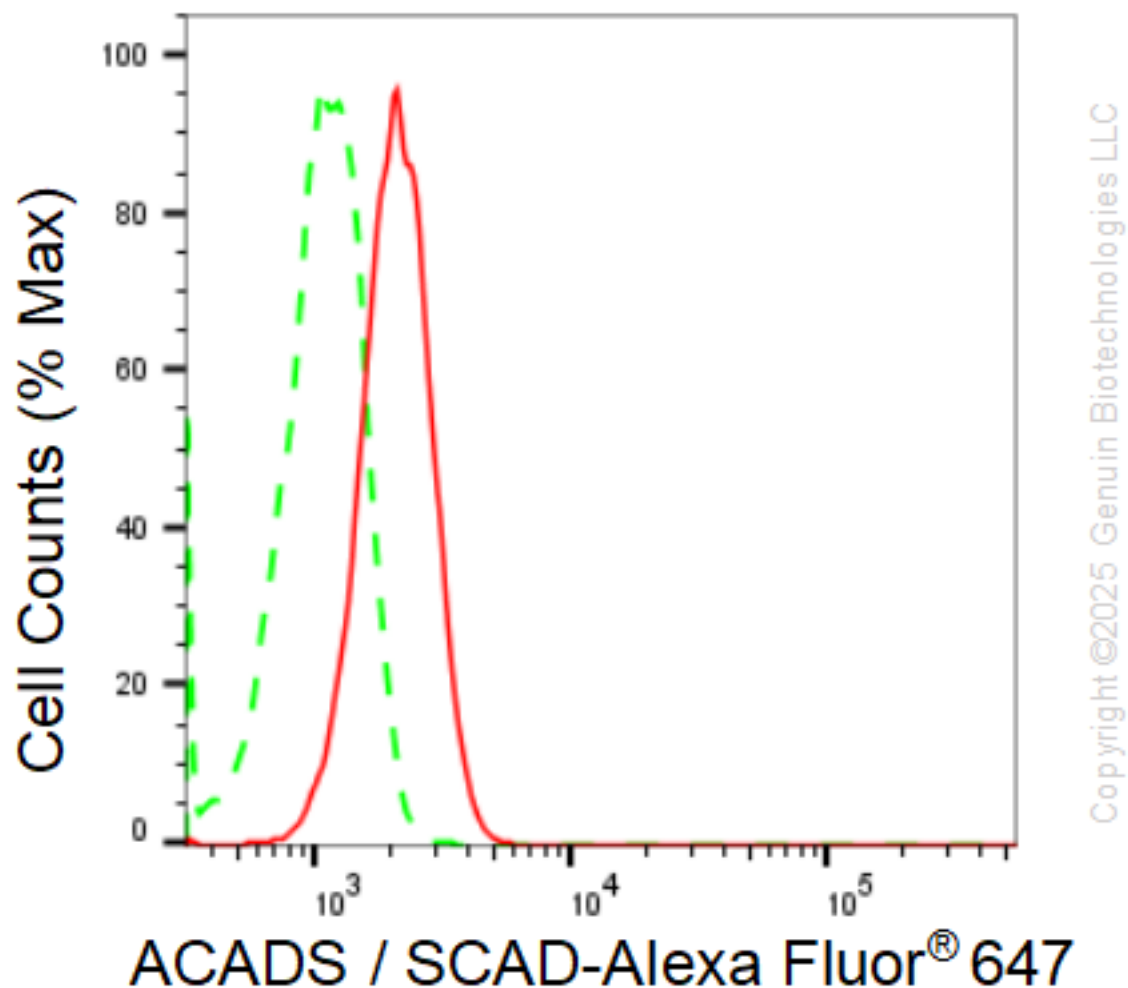
[WWW.GENUINBIOTECH.COM](http://WWW.GENUINBIOTECH.COM)

## KD-Validated Anti-Acyl-CoA dehydrogenase short chain Recombinant Rabbit Monoclonal

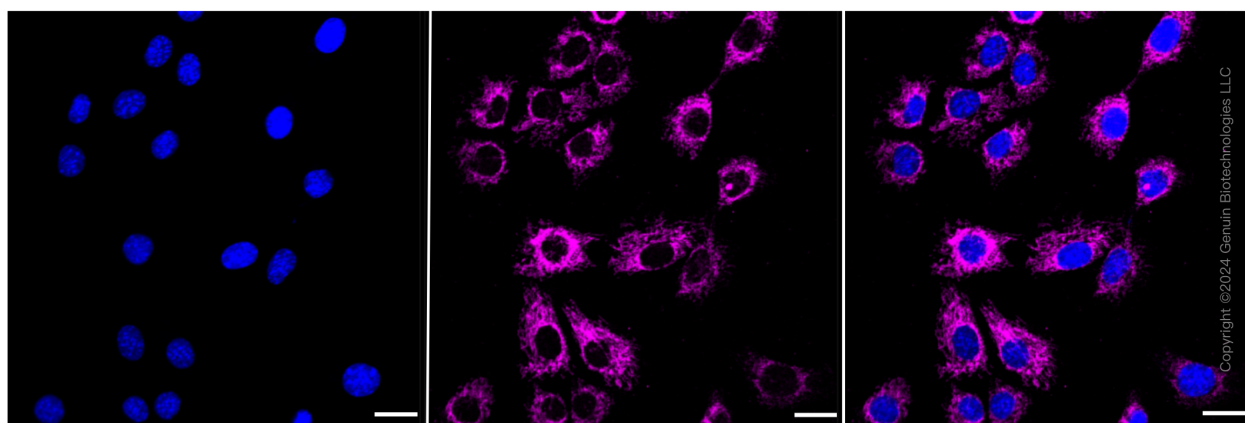
PAGE 2

**Note:** This product is for research use only.

### Validation Data



Flow cytometric analysis of ACADS / SCAD expression in C2C12 cells using anti-ACADS / SCAD antibody (Cat#69112, 1:2,000). Green, isotype control; red, ACADS / SCAD.



#### SUPPORT

SUPPORT@GENUINBIOTECH.COM  
TEL: +1-540-855-7041

#### ORDERS

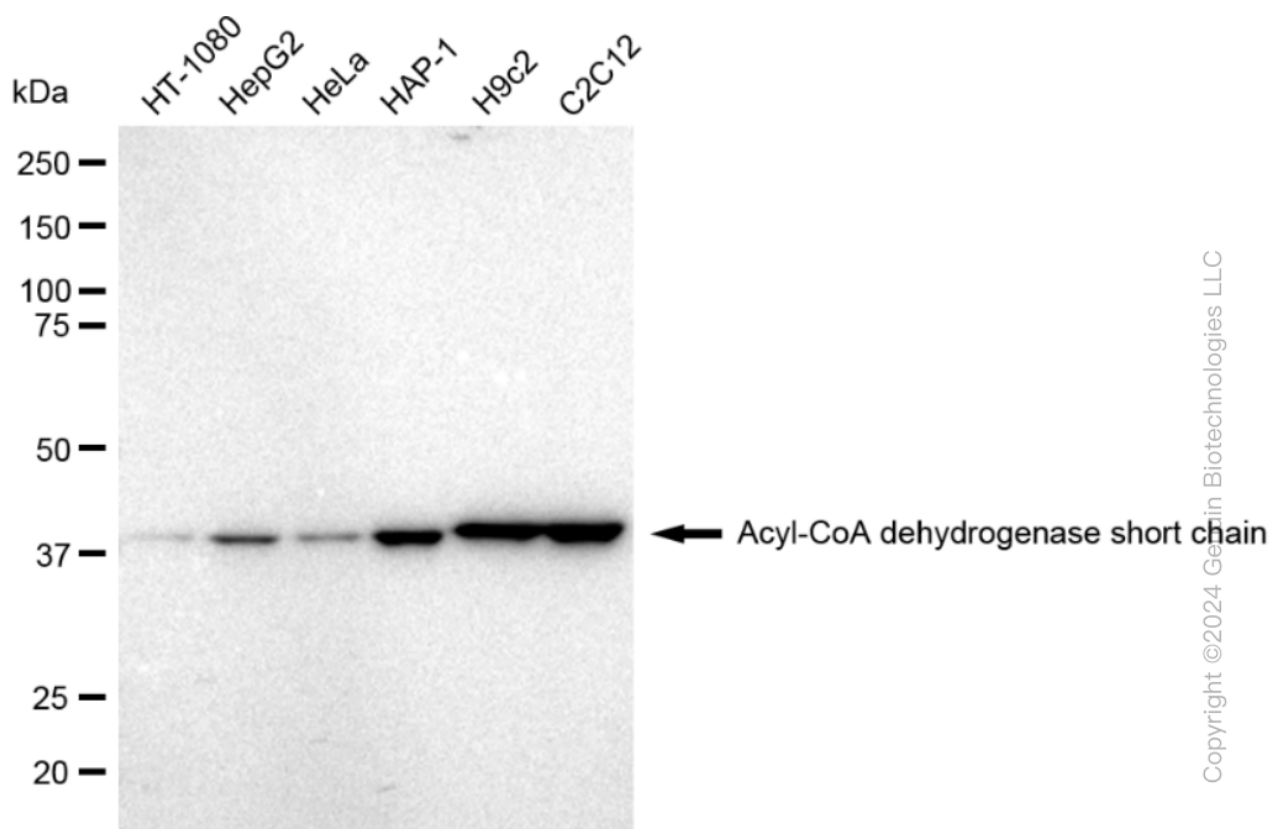
SALES@GENUINBIOTECH.COM  
FAX: +1-540-855-7041

WWW.GENUINBIOTECH.COM

## KD-Validated Anti-Acyl-CoA dehydrogenase short chain Recombinant Rabbit Monoclonal

PAGE 3

Immunocytochemical staining of HeLa cells with Acyl-CoA dehydrogenase short chain antibody (Cat#69112, 1:1,000). Nuclei were stained blue with DAPI; Acyl-CoA dehydrogenase short chain was stained magenta with Alexa Fluor® 647. Images were taken using Leica stellaris 5. Protein abundance based on laser Intensity and smart gain: Medium. Scale bar: 20  $\mu$ m.



Western blotting analysis using anti-Acyl-CoA dehydrogenase short chain antibody (Cat#69112). Total cell lysates (30  $\mu$ g) from various cell lines were loaded and separated by SDS-PAGE. The blot was incubated with anti-Acyl-CoA dehydrogenase short chain antibody (Cat#69112, 1:5,000) and HRP-conjugated goat anti-rabbit secondary antibody (Cat#201, 1:20,000) respectively. Image was developed using FeQ™ ECL Substrate Kit (Cat#226).

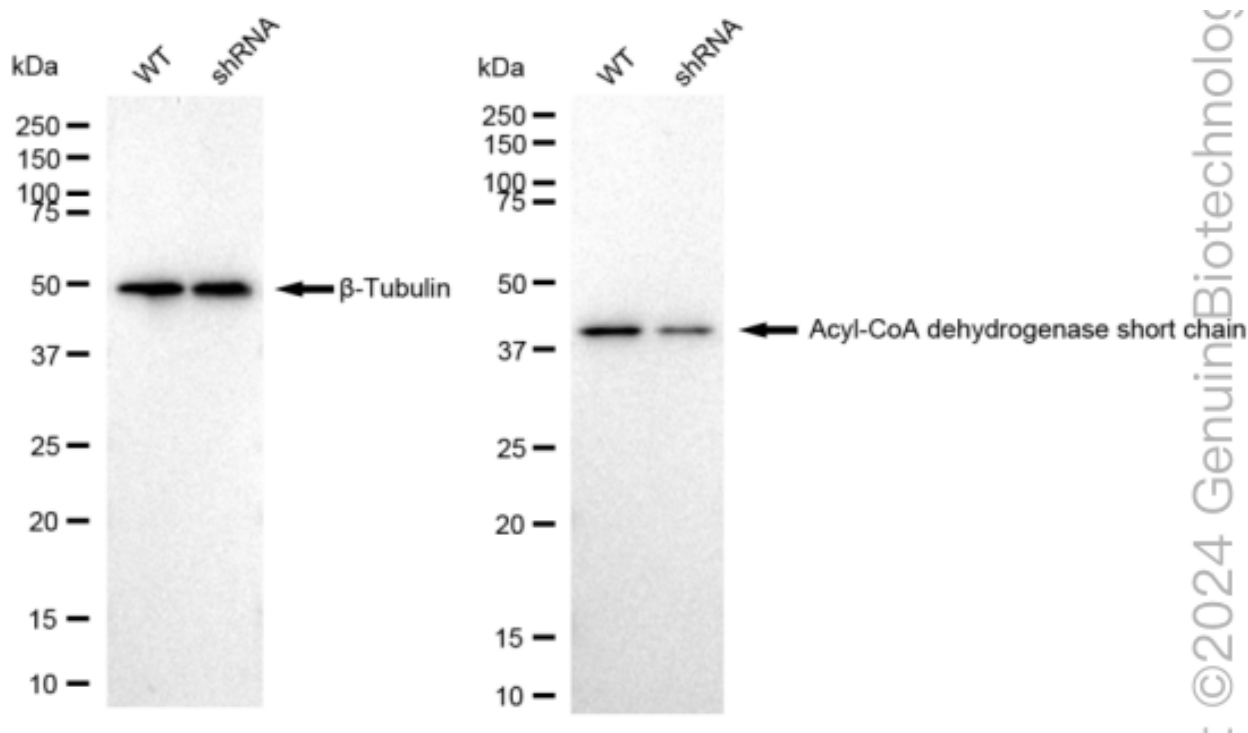
### SUPPORT

SUPPORT@GENUINBIOTECH.COM  
TEL: +1-540-855-7041

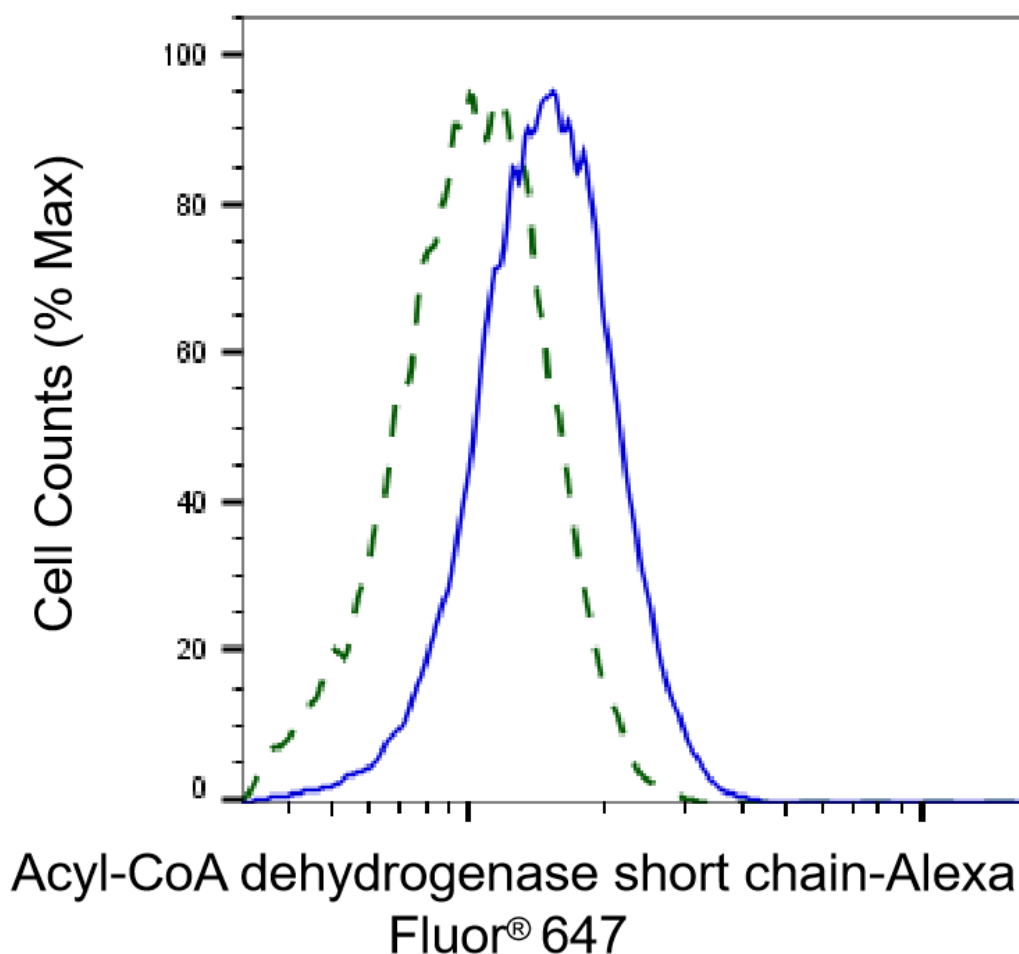
### ORDERS

SALES@GENUINBIOTECH.COM  
FAX: +1-540-855-7041

WWW.GENUINBIOTECH.COM



Western blotting analysis using anti-Acyl-CoA dehydrogenase short chain antibody (Cat#69112). Acyl-CoA dehydrogenase short chain expression in wild type (WT) and acyl-CoA dehydrogenase short chain shRNA knockdown (KD) HeLa cells with 30 µg of total cell lysates. β-Tubulin serves as a loading control. The blot was incubated with anti-Acyl-CoA dehydrogenase short chain antibody (Cat#69112, 1:5,000) and HRP-conjugated goat anti-rabbit secondary antibody (Cat#201, 1:20,000) respectively. Image was developed using FeQ™ ECL Substrate Kit (Cat#226).



Copyright ©2025 Genuin Biotechnologies LLC

Validation of Acyl-CoA dehydrogenase short chain knockdown using flow cytometry. Wild-type(WT, Blue) and knockdown(KD, Green) HeLa cells were stained with anti-Acyl-CoA dehydrogenase short chain antibody (Cat#69112, 1:2,000) and analyzed using BD flow cytometer.