

KD-Validated Anti-BAG cochaperone 3 Recombinant Rabbit Monoclonal Antibody



Catalog #: 69133

Aliases

BAG3; BAG Cochaperone 3; BAG Family Molecular Chaperone Regulator 3; BCL2 Associated Athanogene 3; Bcl-2-Binding Protein Bis; Docking Protein CAIR-1; BAG-3; BIS; Bcl-2-Binding Protein BIS Transcript 2; Bcl-2-Associated Athanogene 3; BCL2-Binding Athanogene 3; CAIR-1; MFM6

Background

Gene Name: BAG3

NCBI Gene Entry: [9531](#)

UniProt Entry: [O95817](#)

Application Information

Molecular Weight: Predicted, 62 kDa, observed, 80 kDa

Clonality: Rabbit monoclonal antibody

Clone ID: 23GB1520

Species Reactivity: Human, mouse

Applications Tested: Western blotting (WB), flow cytometry (FCM), immunocytochemistry (IC)

Immunogen

A synthesized peptide derived from human Bag3

Isotype

Rabbit IgG

Storage Buffer

Supplied in PBS (pH 7.4) containing 50% glycerol, and 0.02% sodium azide.

Storage

Store at -20 °C for one year.

Recommended Dilutions

Western Blotting (WB): 1:1,000-1:5,000

Flow Cytometry (FCM): 1:2,000

Immunocytochemistry (IC): 1:100-1:1,000

SUPPORT

SUPPORT@GENUINBIOTECH.COM
TEL: +1-540-855-7041

ORDERS

SALES@GENUINBIOTECH.COM
FAX: +1-540-855-7041

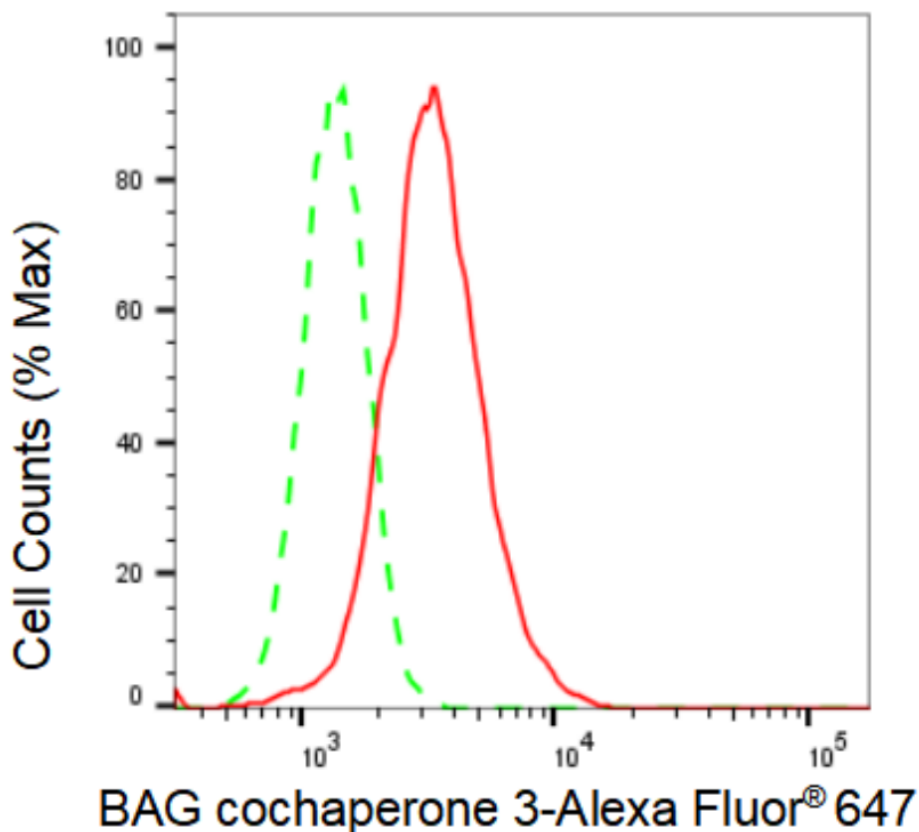
WWW.GENUINBIOTECH.COM

KD-Validated Anti-BAG cochaperone 3 Recombinant Rabbit Monoclonal Antibody

PAGE 2

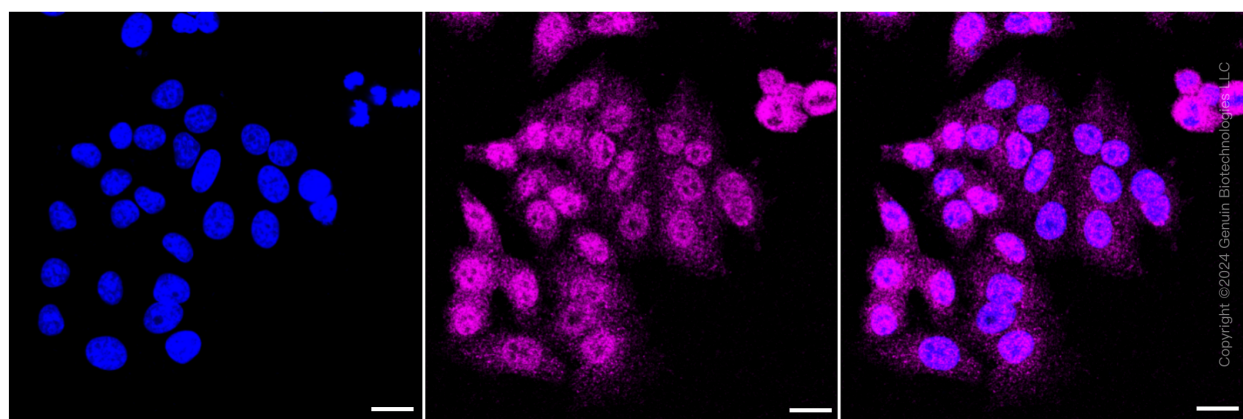
Note: This product is for research use only.

Validation Data



Copyright ©2024 Genuin Biotechnologies LLC

Flow cytometric analysis of BAG cochaperone 3 expression in HepG2 cells using BAG cochaperone 3 antibody (Cat#69133, 1:2,000). Green, isotype control; red, BAG cochaperone 3.



Copyright ©2024 Genuin Biotechnologies LLC

SUPPORT

SUPPORT@GENUINBIOTECH.COM
TEL: +1-540-855-7041

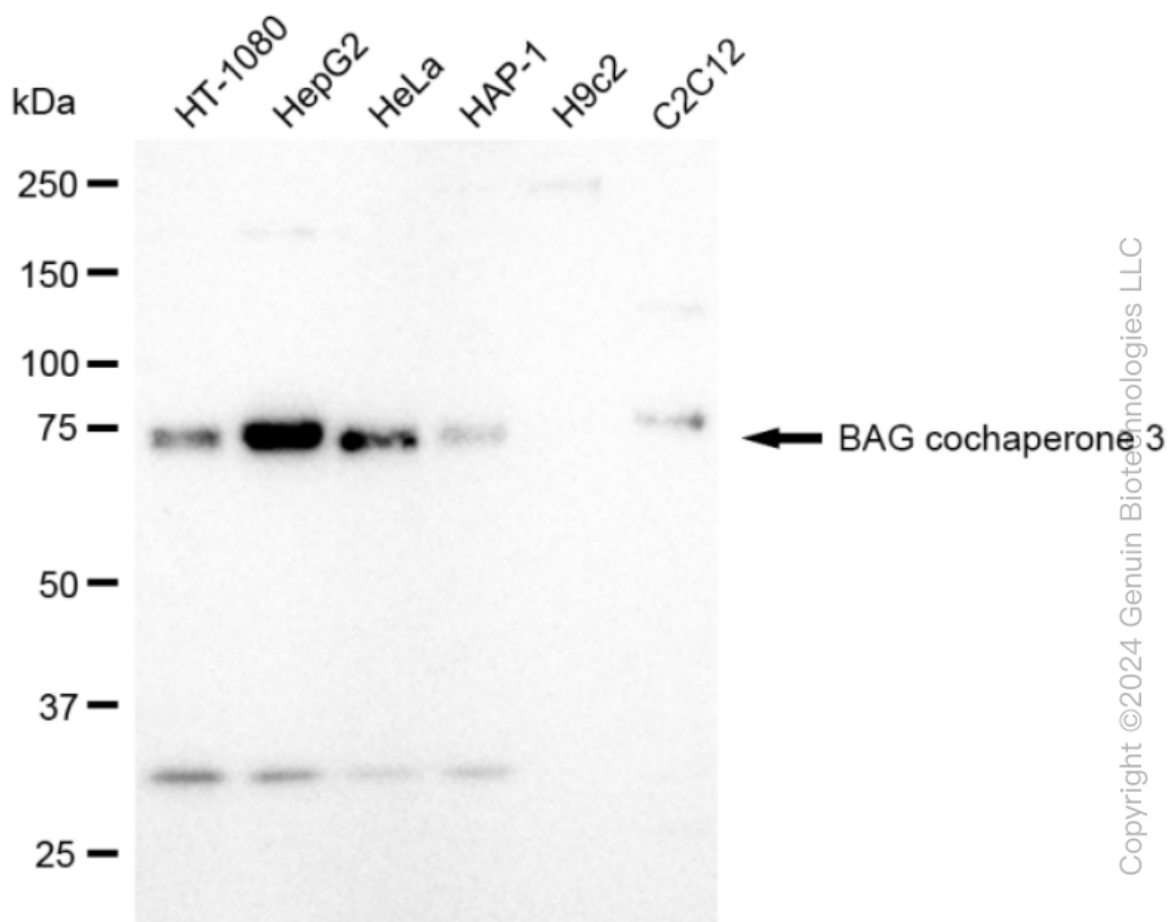
ORDERS

SALES@GENUINBIOTECH.COM
FAX: +1-540-855-7041

WWW.GENUINBIOTECH.COM

KD-Validated Anti-BAG cochaperone 3 Recombinant Rabbit Monoclonal Antibody

PAGE 3



Western blotting analysis using anti-BAG cochaperone 3 antibody (Cat#69133). Total cell lysates (30 µg) from various cell lines were loaded and separated by SDS-PAGE. The blot was incubated with anti-BAG cochaperone 3 antibody (Cat#69133, 1:5,000) and HRP-conjugated goat anti-rabbit secondary antibody (Cat#201, 1:20,000) respectively. Image was developed using FeQ™ ECL Substrate Kit (Cat#226).

SUPPORT

SUPPORT@GENUINBIOTECH.COM
TEL: +1-540-855-7041

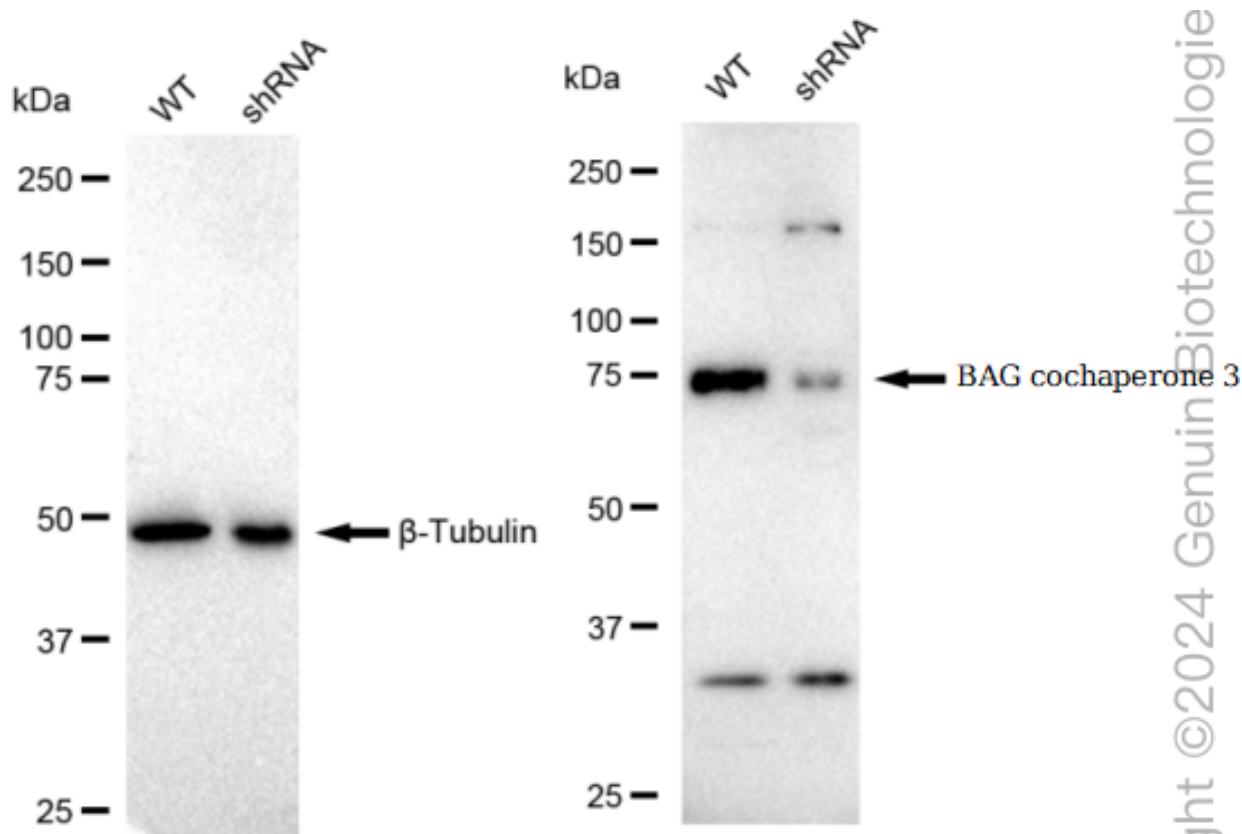
ORDERS

SALES@GENUINBIOTECH.COM
FAX: +1-540-855-7041

WWW.GENUINBIOTECH.COM

KD-Validated Anti-BAG cochaperone 3 Recombinant Rabbit Monoclonal Antibody

PAGE 4



Western blotting analysis using anti-BAG cochaperone 3 antibody (Cat#69133). BAG cochaperone 3 expression in wild type (WT) and BAG cochaperone 3 shRNA knockdown (KD) HeLa cells with 30 µg of total cell lysates. β-Tubulin serves as a loading control. The blot was incubated with anti-BAG cochaperone 3 antibody (Cat#69133, 1:5,000) and HRP-conjugated goat anti-rabbit secondary antibody (Cat#201, 1:20,000) respectively. Image was developed using FeQ™ ECL Substrate Kit (Cat#226).

SUPPORT

SUPPORT@GENUINBIOTECH.COM
TEL: +1-540-855-7041

ORDERS

SALES@GENUINBIOTECH.COM
FAX: +1-540-855-7041

WWW.GENUINBIOTECH.COM