

KD-Validated Anti-Angio associated migratory cell protein Recombinant Rabbit Monoclonal



Catalog #: 69156

Aliases

AAMP; Angio Associated Migratory Cell Protein; Angio-Associated Migratory Cell Protein

Background

Gene Name: AAMP

NCBI Gene Entry: [14](#)

UniProt Entry: [Q13685](#)

Application Information

Molecular Weight: Predicted, 47 kDa, observed, 52 kDa

Clonality: Rabbit monoclonal antibody

Clone ID: 23GB1885

Species Reactivity: Human, mouse, rat

Applications Tested: Western blotting (WB), flow cytometry (FCM), immunocytochemistry (IC)

Immunogen

A synthesized peptide derived from human AAMP

Isotype

Rabbit IgG

Storage Buffer

Supplied in PBS (pH 7.4) containing 50% glycerol, and 0.02% sodium azide.

Storage

Store at -20 °C for one year.

Recommended Dilutions

Western Blotting (WB): 1:1,000-1:5,000

Flow Cytometry (FCM): 1:2,000

Immunocytochemistry (IC): 1:100-1:1,000

Note: This product is for research use only.

Validation Data

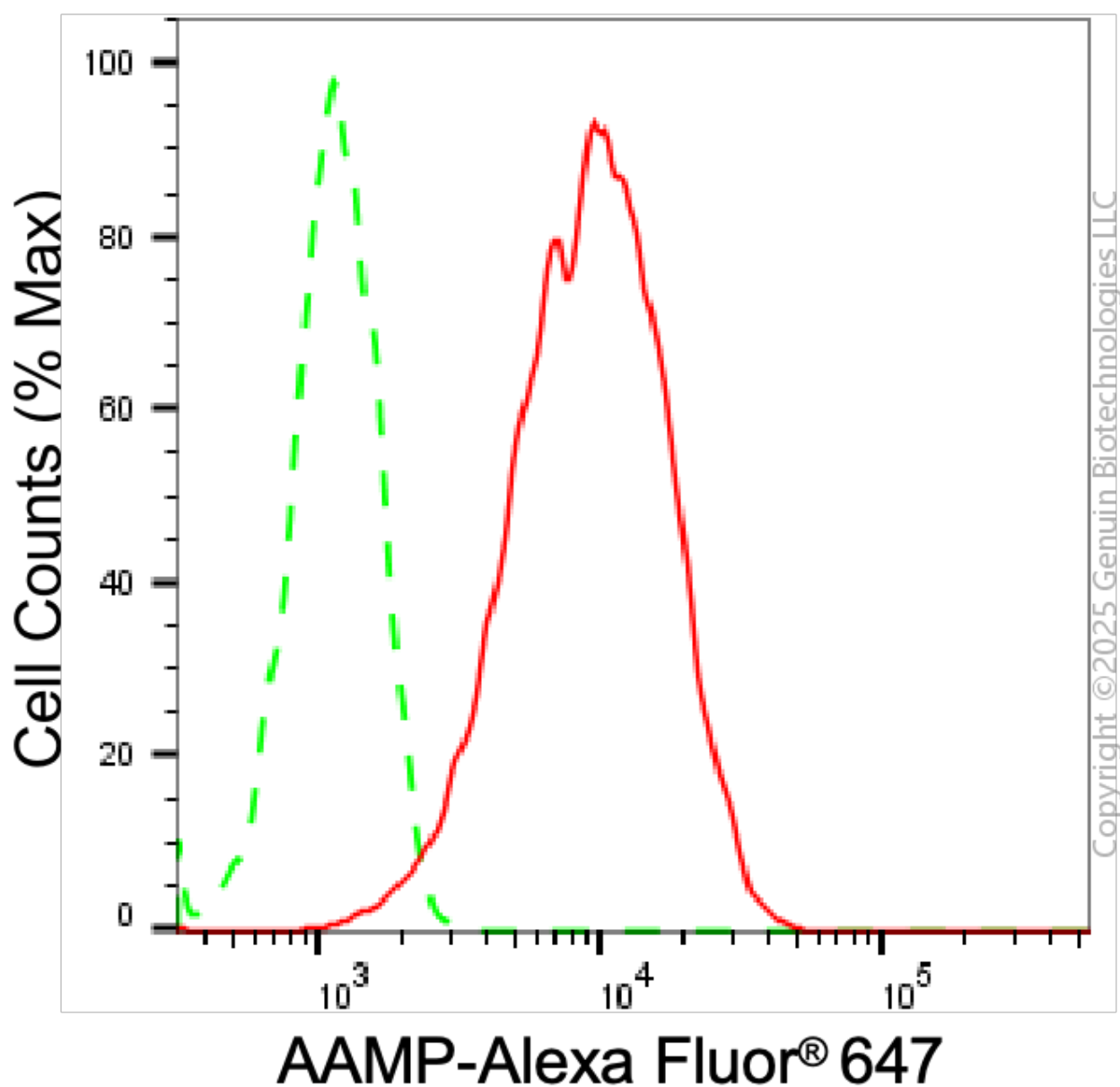
SUPPORT

SUPPORT@GENUINBIOTECH.COM
TEL: +1-540-855-7041

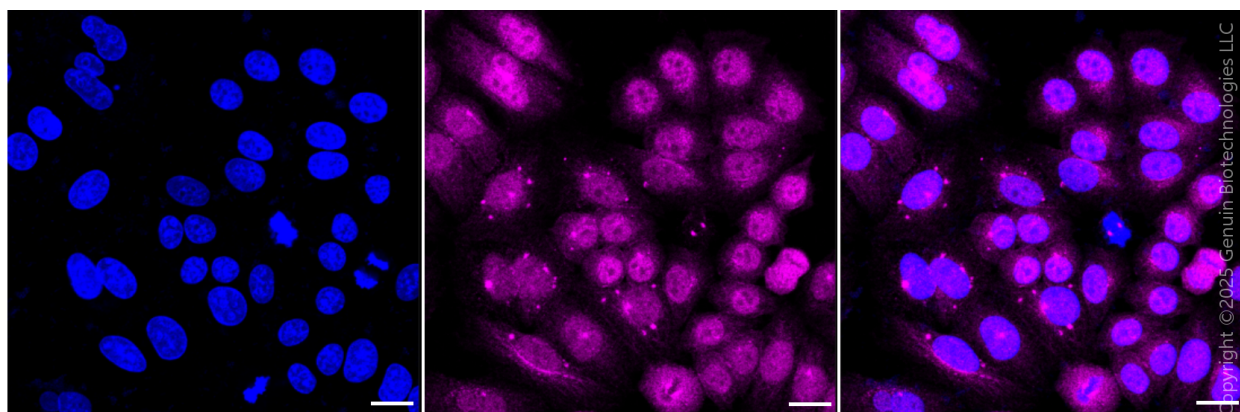
ORDERS

SALES@GENUINBIOTECH.COM
FAX: +1-540-855-7041

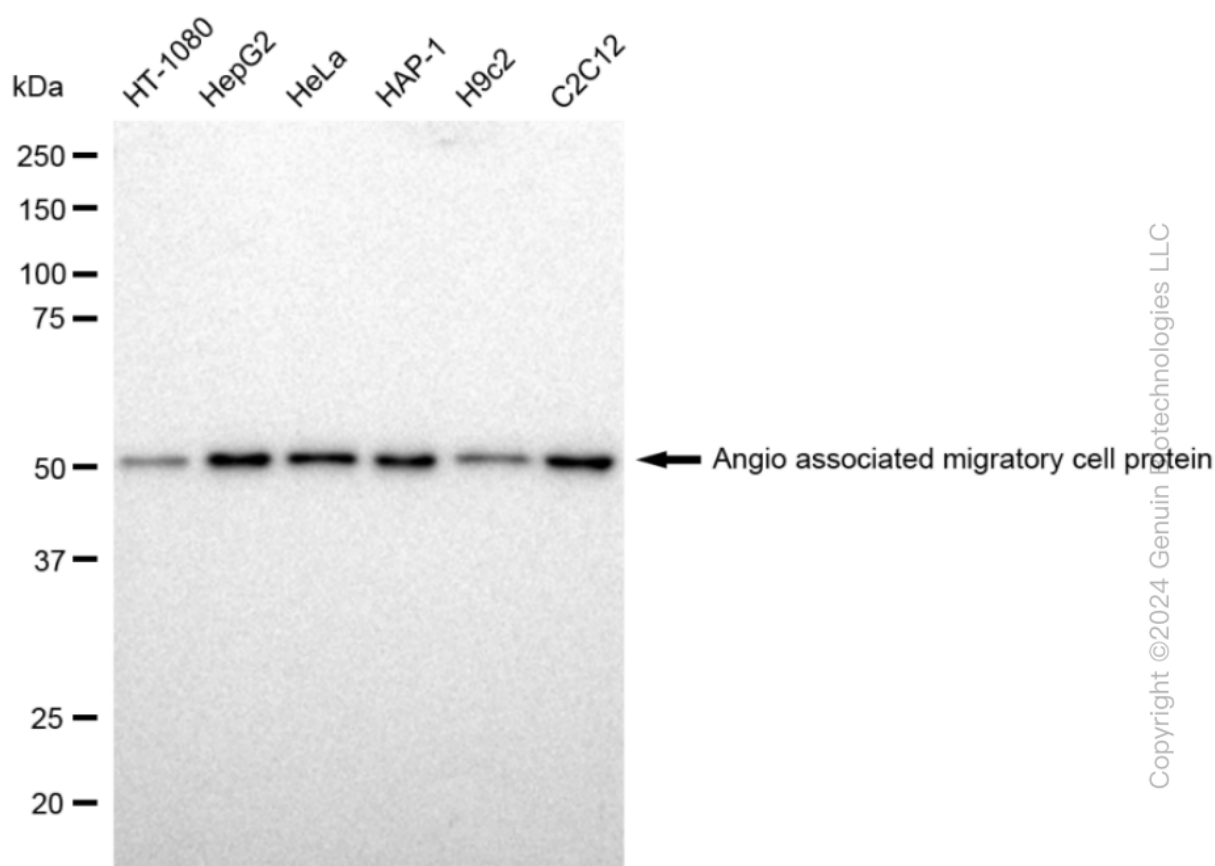
WWW.GENUINBIOTECH.COM



Flow cytometric analysis of AAMP expression in HepG2 cells using anti-AAMP antibody (Cat#69156, 1:2,000). Green, isotype control; red, AAMP.



Immunocytochemical staining of HeLa cells using anti-Angio associated migratory cell protein antibody (Cat#69156, 1:1,000), Top panel: wild-type (WT); Bottom panel: Angio associated migratory cell protein shRNA knockdown (KD). Nuclei were stained blue with DAPI;Angio associated migratory cell protein was stained magenta with Alexa Fluor® 647. Scale bar, 20 μ m. Permeabilization: Triton.



Western blotting analysis using anti-Angio associated migratory cell protein antibody (Cat#69156). Total cell lysates (30 μ g) from various cell lines were loaded and separated by SDS-PAGE. The blot was incubated with anti-Angio associated migratory cell protein antibody

SUPPORT

SUPPORT@GENUINBIOTECH.COM
TEL: +1-540-855-7041

ORDERS

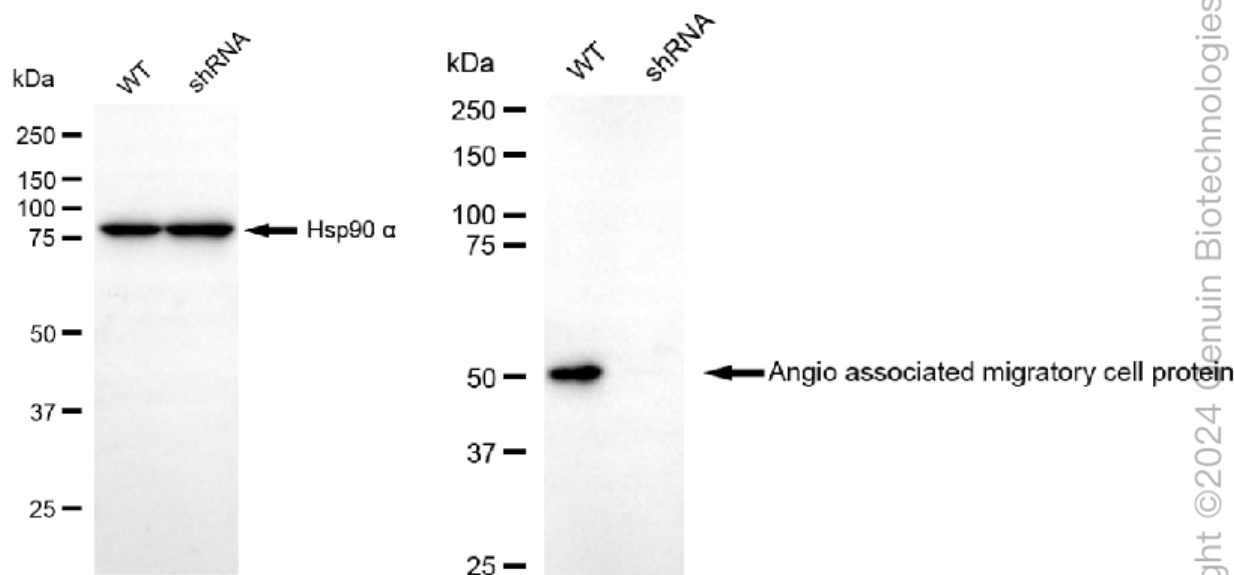
SALES@GENUINBIOTECH.COM
FAX: +1-540-855-7041

WWW.GENUINBIOTECH.COM

KD-Validated Anti-Angio associated migratory cell protein Recombinant Rabbit Monoclonal

PAGE 4

(Cat#69156, 1:5,000) and HRP-conjugated goat anti-rabbit secondary antibody (Cat#201, 1:20,000) respectively. Image was developed using FeQ™ ECL Substrate Kit (Cat#226).



Western blotting analysis using anti-Angio associated migratory cell protein antibody (Cat#69156). Angio associated migratory cell protein expression in wild type (WT) and angio associated migratory cell protein shRNA knockdown (KD) HeLa cells with 30 µg of total cell lysates. β-Tubulin serves as a loading control. The blot was incubated with anti-Angio associated migratory cell protein antibody (Cat#69156, 1:5,000) and HRP-conjugated goat anti-rabbit secondary antibody (Cat#201, 1:20,000) respectively. Image was developed using FeQ™ ECL Substrate Kit (Cat#226).

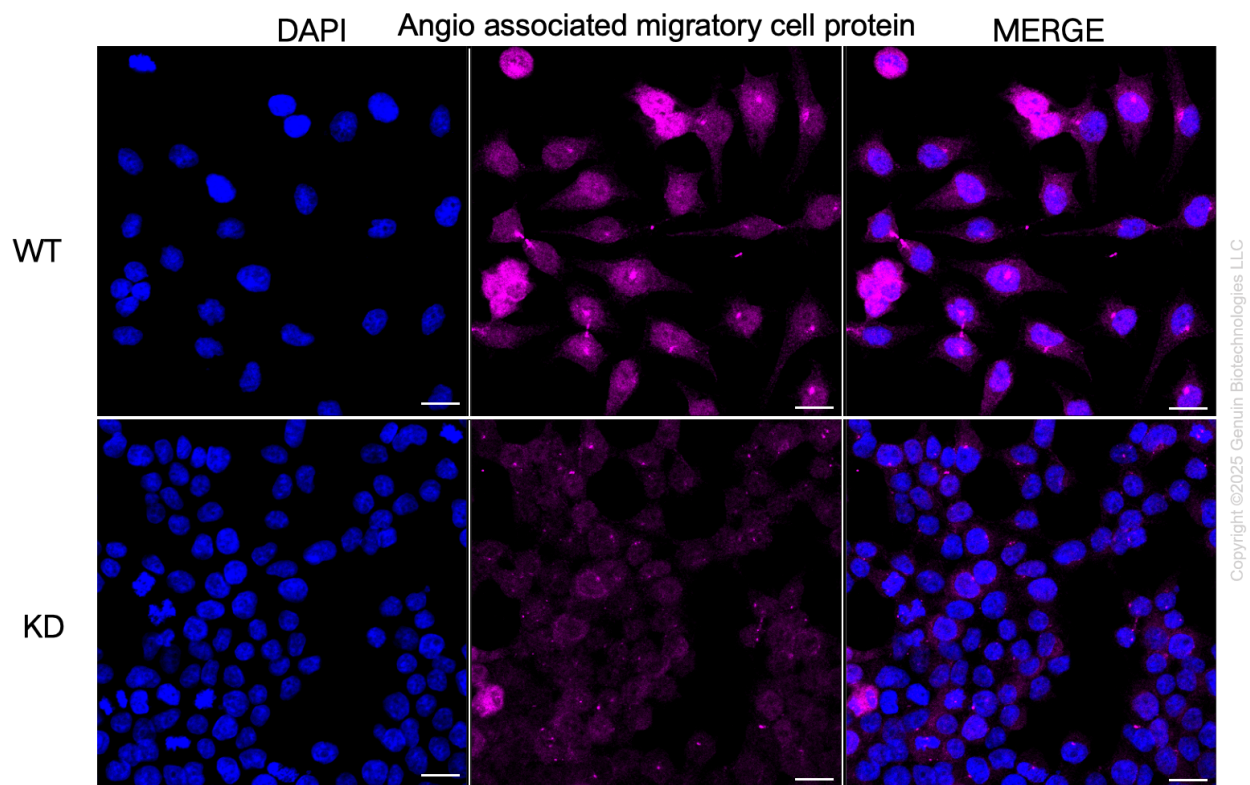
SUPPORT

SUPPORT@GENUINBIOTECH.COM
TEL: +1-540-855-7041

ORDERS

SALES@GENUINBIOTECH.COM
FAX: +1-540-855-7041

WWW.GENUINBIOTECH.COM



Immunocytochemical staining of HeLa cells using anti-Angio associated migratory cell protein antibody (Cat#69156, 1:1,000), Top panel: wild-type (WT); Bottom panel: Angio associated migratory cell protein shRNA knockdown (KD). Nuclei were stained blue with DAPI;Angio associated migratory cell protein was stained magenta with Alexa Fluor® 647. Scale bar, 20 μ m. Permeabilization: Triton.