

KD-Validated Anti-Arp3 Recombinant Rabbit Monoclonal Antibody



Catalog #: 69173

Aliases

ACTR3; Actin Related Protein 3; ARP3; ARP3 Actin Related Protein 3 Homolog; Actin-Related Protein 3; Actin-Like Protein 3; ARP3 (Actin-Related Protein 3, Yeast) Homolog; ARP3 Actin-Related Protein 3 Homolog (Yeast)

Background

Gene Name: ACTR3

NCBI Gene Entry: [10096](#)

UniProt Entry: [P61158](#)

Application Information

Molecular Weight: Predicted, 47 kDa, observed, 47 kDa

Clonality: Rabbit monoclonal antibody

Clone ID: 23GB615

Species Reactivity: Human, mouse, rat

Applications Tested: Western blotting (WB), flow cytometry (FCM), immunocytochemistry (IC)

Immunogen

A synthesized peptide derived from human ACTR3

Isotype

Rabbit IgG

Storage Buffer

Supplied in PBS (pH 7.4) containing 50% glycerol, and 0.02% sodium azide.

Storage

Store at -20 °C for one year.

Recommended Dilutions

Western Blotting (WB): 1:1,000-1:5,000

Flow Cytometry (FCM): 1:2,000

Immunocytochemistry (IC): 1:100-1:1,000

Note: This product is for research use only.

SUPPORT

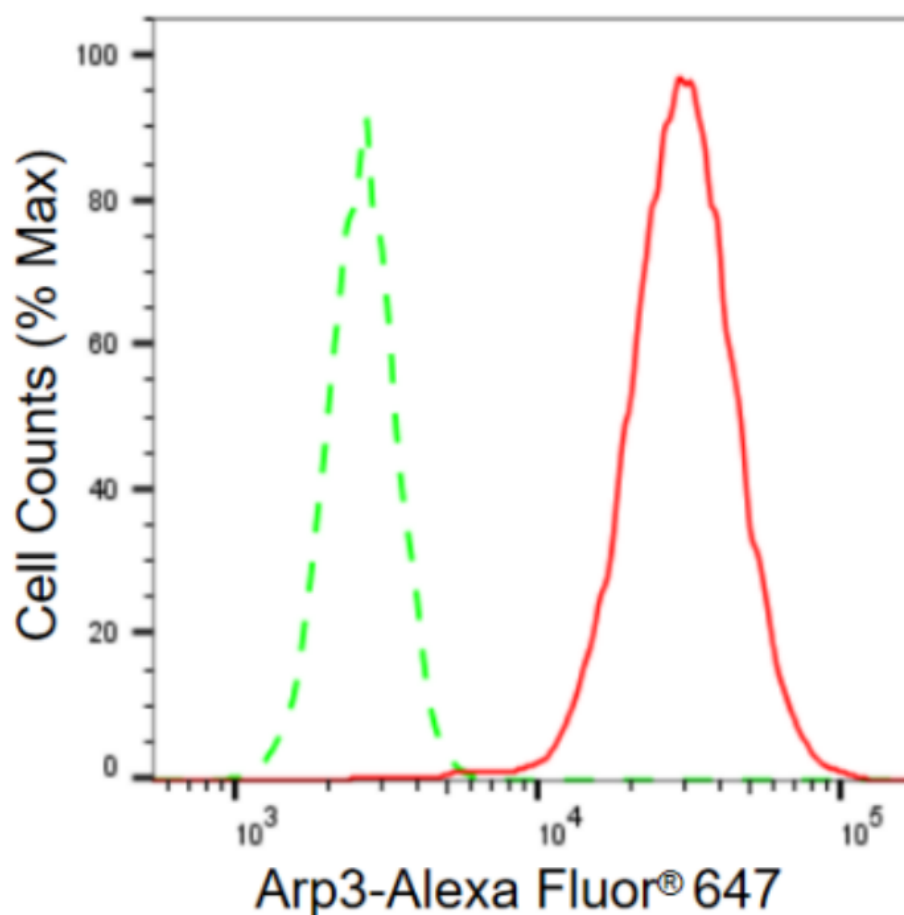
SUPPORT@GENUINBIOTECH.COM
TEL: +1-540-855-7041

ORDERS

SALES@GENUINBIOTECH.COM
FAX: +1-540-855-7041

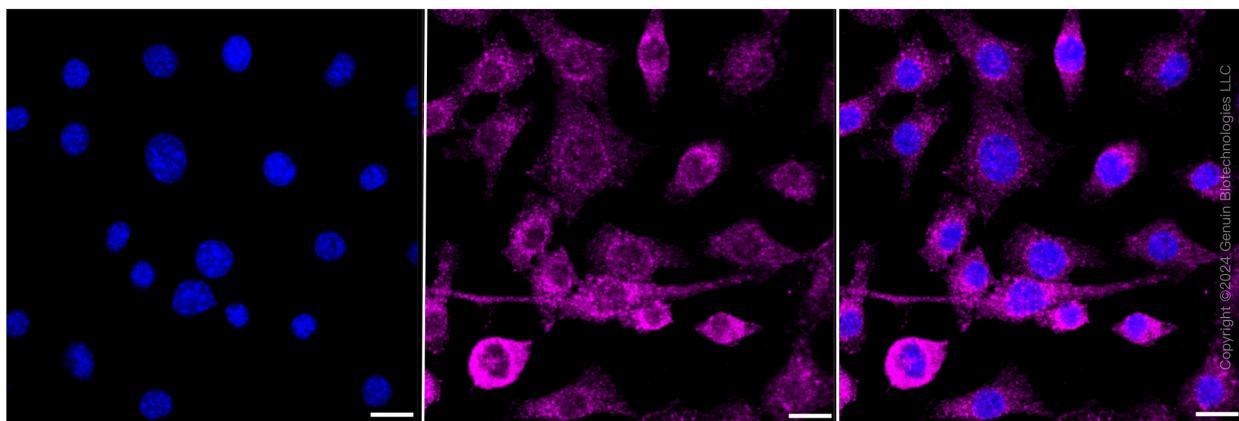
WWW.GENUINBIOTECH.COM

Validation Data



Copyright ©2024 Genuin Biotechnologies LLC

Flow cytometric analysis of Arp3 expression in C2C12 cells using Arp3 antibody (Cat#69173, 1:2,000). Green, isotype control; red, Arp3.



Copyright ©2024 Genuin Biotechnologies LLC

Immunocytochemical staining of C2C12 cells with Arp3 antibody (Cat#69173, 1:1,000). Nuclei were stained blue with DAPI; Arp3 was stained magenta with Alexa Fluor® 647. Images were taken using Leica stellaris 5. Protein abundance based on laser Intensity and smart gain: Medium.

SUPPORT

SUPPORT@GENUINBIOTECH.COM
TEL: +1-540-855-7041

ORDERS

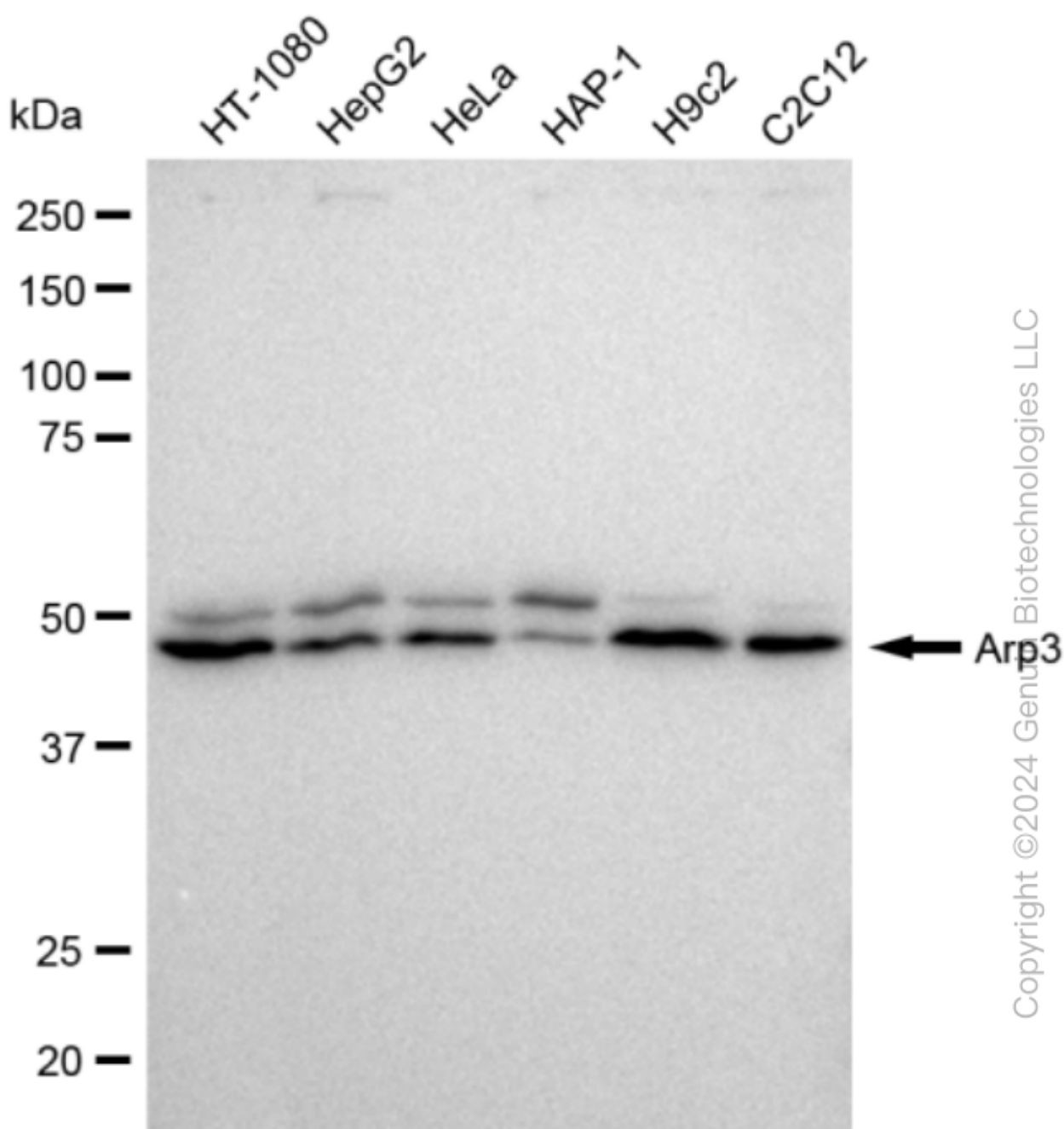
SALES@GENUINBIOTECH.COM
FAX: +1-540-855-7041

WWW.GENUINBIOTECH.COM

KD-Validated Anti-Arp3 Recombinant Rabbit Monoclonal Antibody

PAGE 3

Scale bar: 20 μ m.



Western blotting analysis using anti-Arp3 antibody (Cat#69173). Total cell lysates (30 μ g) from various cell lines were loaded and separated by SDS-PAGE. The blot was incubated with anti-Arp3 antibody (Cat#69173, 1:5,000) and HRP-conjugated goat anti-rabbit secondary antibody (Cat#201, 1:50,000) respectively. Image was developed using FeQ™ ECL Substrate Kit (Cat#226).

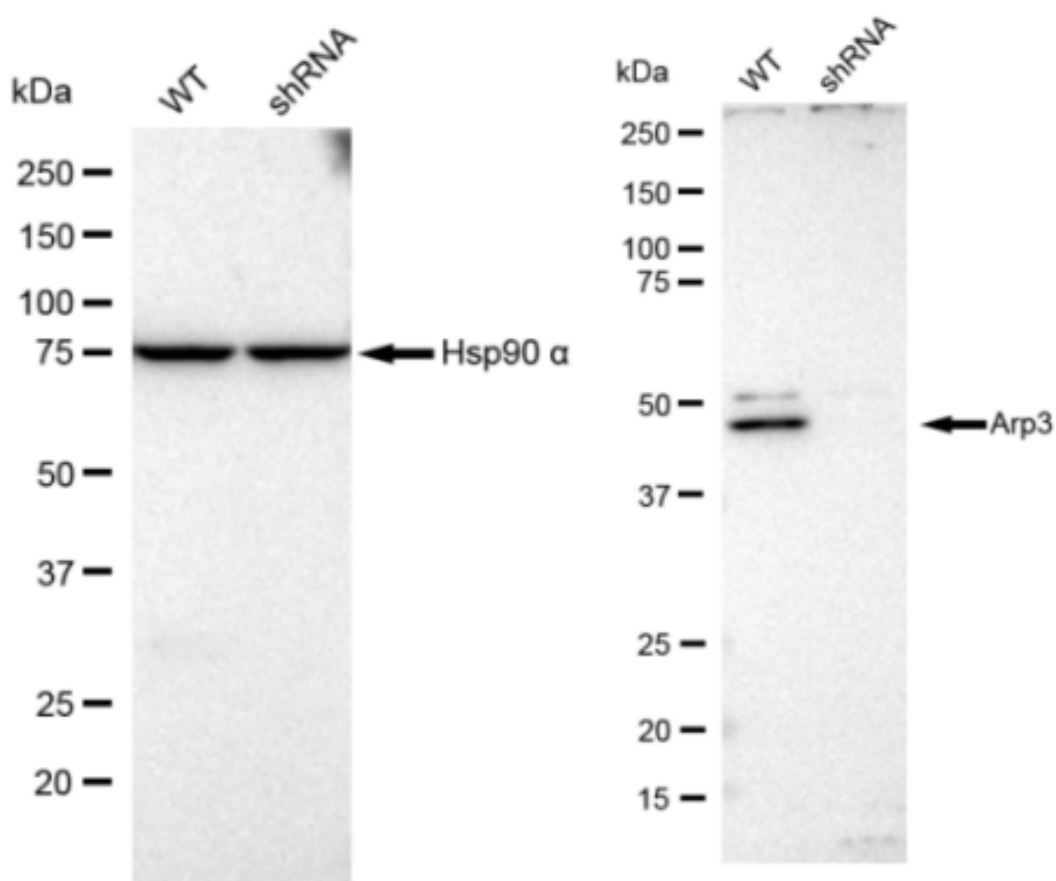
SUPPORT

SUPPORT@GENUINBIOTECH.COM
TEL: +1-540-855-7041

ORDERS

SALES@GENUINBIOTECH.COM
FAX: +1-540-855-7041

WWW.GENUINBIOTECH.COM



Western blotting analysis using anti-Arp3 antibody (Cat#69173). Arp3 expression in wild type (WT) and Arp3 shRNA knockdown (KD) HeLa cells with 30 µg of total cell lysates. Hsp90 α serves as a loading control. The blot was incubated with anti-Arp3 antibody (Cat#69173, 1:5,000) and HRP-conjugated goat anti-rabbit secondary antibody (Cat#201, 1:50,000) respectively. Image was developed using FeQ™ ECL Substrate Kit (Cat#226).