

KD-Validated Anti-Actin like 6A Recombinant Rabbit Monoclonal Antibody



Catalog #: 69174

Aliases

ACTL6A; Actin Like 6A; BAF53A; INO80K; BRG1-Associated Factor 53A; INO80 Complex Subunit K; SMARCN1; 53 KDa BRG1-Associated Factor A; Actin-Related Protein Baf53a; BAF Complex 53 KDa Subunit; Actin-Related Protein; Actin-Like Protein 6A; ArpNbeta; ACTL6; BAF53; Arp4; HArpN Beta; ARPN-BETA; Baf53a; Actl6; ARP4

Background

Gene Name: ACTL6A

NCBI Gene Entry: [86](#)

UniProt Entry: [O96019](#)

Application Information

Molecular Weight: Predicted, 47 kDa, observed, 47 kDa

Clonality: Rabbit monoclonal antibody

Clone ID: 23GB1155

Species Reactivity: Human, mouse, rat

Applications Tested: Western blotting (WB), flow cytometry (FCM), immunocytochemistry (IC)

Immunogen

A synthesized peptide derived from human ACTL6A

Isotype

Rabbit IgG

Storage Buffer

Supplied in PBS (pH 7.4) containing 50% glycerol, and 0.02% sodium azide.

Storage

Store at -20 °C for one year.

Recommended Dilutions

Western Blotting (WB): 1:1,000-1:5,000

Flow Cytometry (FCM): 1:2,000

Immunocytochemistry (IC): 1:100-1:1,000

SUPPORT

SUPPORT@GENUINBIOTECH.COM
TEL: +1-540-855-7041

ORDERS

SALES@GENUINBIOTECH.COM
FAX: +1-540-855-7041

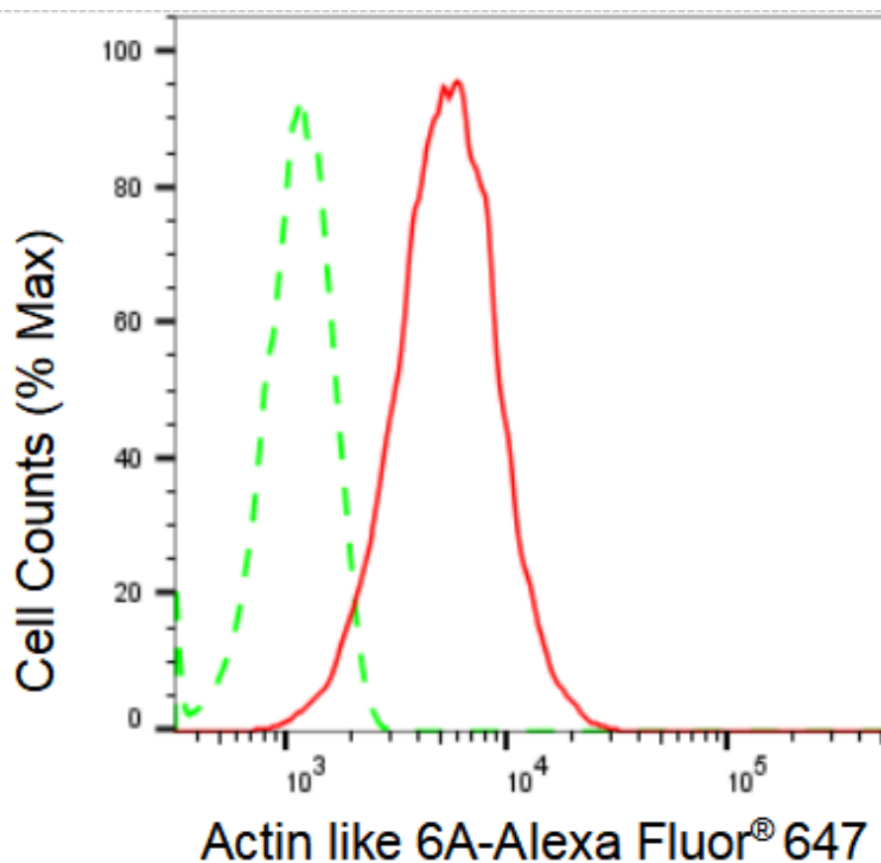
WWW.GENUINBIOTECH.COM

KD-Validated Anti-Actin like 6A Recombinant Rabbit Monoclonal Antibody

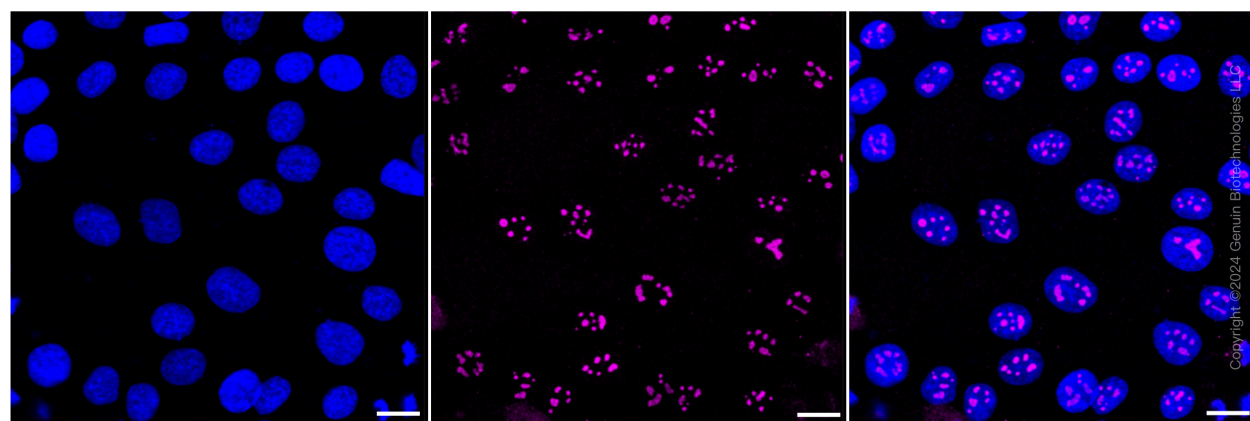
PAGE 2

Note: This product is for research use only.

Validation Data



Copyright ©2024 Genuin Biotechnologies LLC



Copyright ©2024 Genuin Biotechnologies LLC

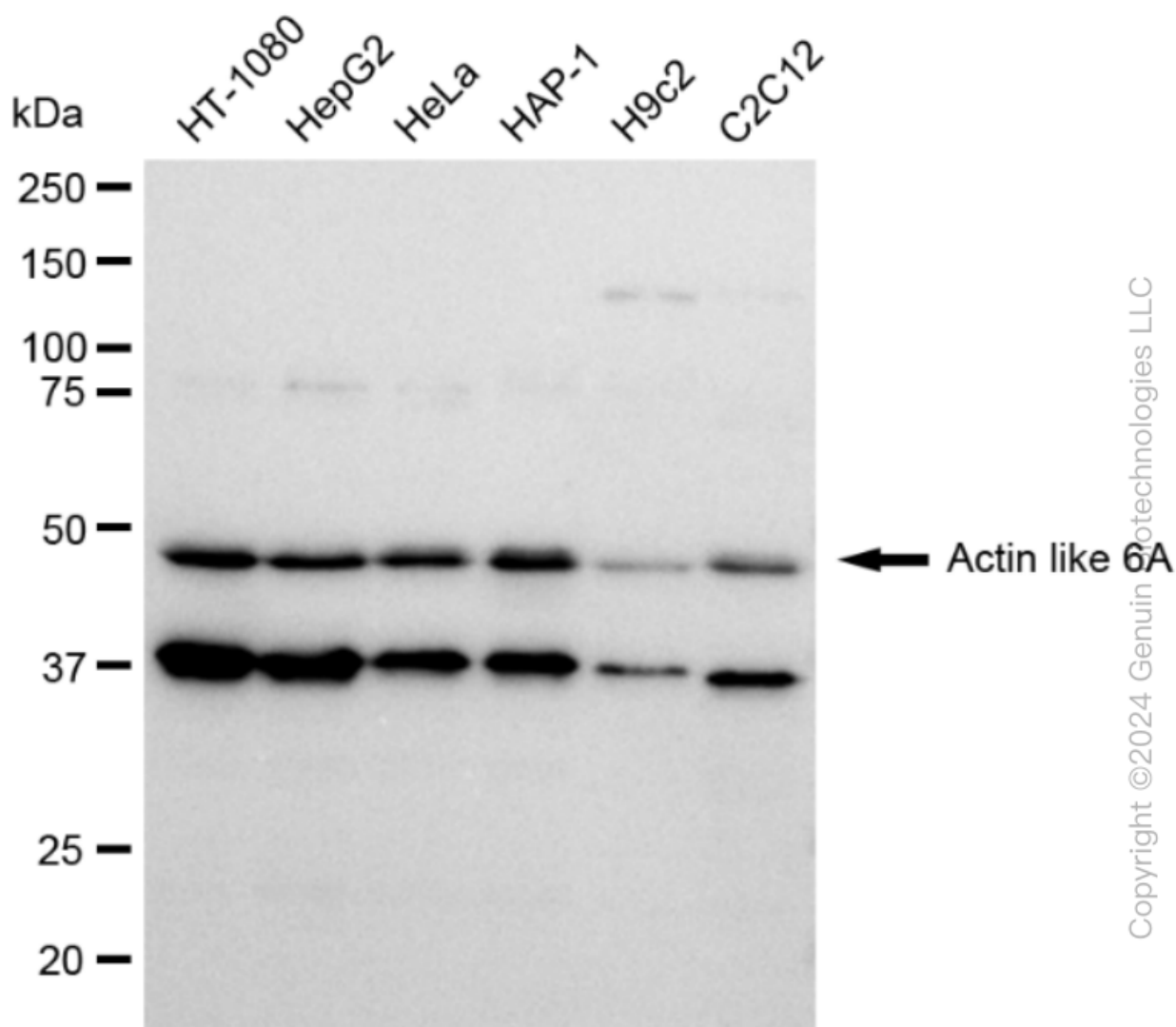
SUPPORT

SUPPORT@GENUINBIOTECH.COM
TEL: +1-540-855-7041

ORDERS

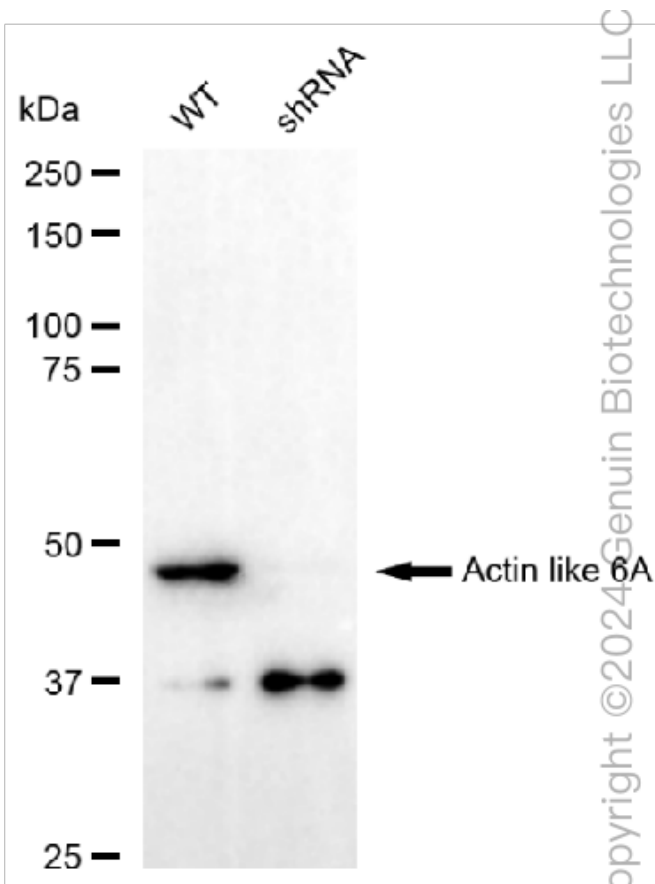
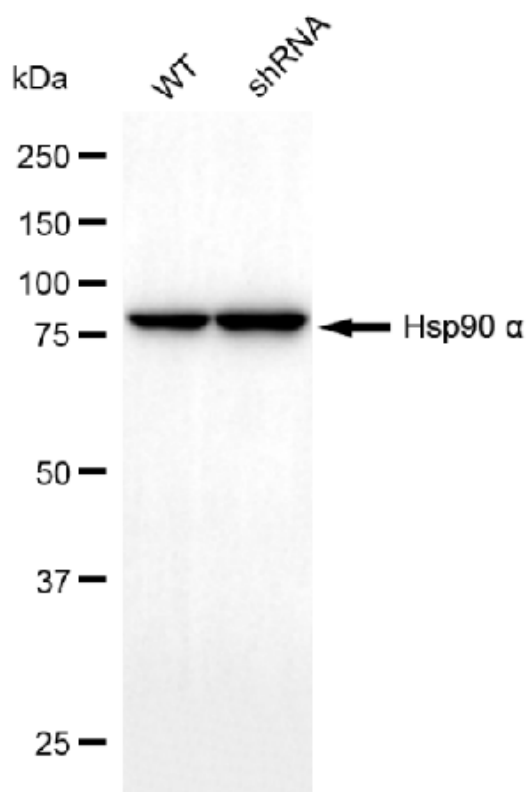
SALES@GENUINBIOTECH.COM
FAX: +1-540-855-7041

WWW.GENUINBIOTECH.COM



Copyright ©2024 Genuin Biotechnologies LLC

Western blotting analysis using anti-Actin like 6A antibody (Cat#69174). Total cell lysates (30 µg) from various cell lines were loaded and separated by SDS-PAGE. The blot was incubated with anti-Actin like 6A antibody (Cat#69174, 1:5,000) and HRP-conjugated goat anti-rabbit secondary antibody (Cat#201, 1:20,000) respectively. Image was developed using FeQ™ ECL Substrate Kit (Cat#226).



Western blotting analysis using anti-Actin like 6A antibody (Cat#69174). Actin like 6A expression in wild type (WT) and actin like 6A shRNA knockdown (KD) HeLa cells with 30 µg of total cell lysates. β-Tubulin serves as a loading control. The blot was incubated with anti-Actin like 6A antibody (Cat#69174, 1:5,000) and HRP-conjugated goat anti-rabbit secondary antibody (Cat#201, 1:20,000) respectively. Image was developed using FeQ™ ECL Substrate Kit (Cat#226).