

# KD-Validated Anti-ACSS2 Recombinant Rabbit Monoclonal Antibody



**Catalog #: 69177**

## Aliases

ACSS2; Acyl-CoA Synthetase Short Chain Family Member 2; ACS; DJ1161H23.1; ACAS2; ACSA; Acetyl-Coenzyme A Synthetase 2 (ADP Forming); Acetyl-Coenzyme A Synthetase, Cytoplasmic; Acetyl-CoA Synthetase 1; Acyl-Activating Enzyme; Propionate--CoA Ligase; EC 6.2.1.1; AceCS1; AceCS; ACECS; Acyl-CoA Synthetase Short-Chain Family Member 2; Cytoplasmic Acetyl-Coenzyme A Synthetase; Acetyl-CoA Synthetase; Acetate--CoA Ligase; Acetate Thiokinase; Acetate-CoA Ligase; EC 6.2.1.17; EC 6.2.1

## Background

Gene Name: ACSS2

NCBI Gene Entry: [55902](#)

UniProt Entry: [Q9NR19](#)

## Application Information

Molecular Weight: Predicted, 79 kDa, observed, 78 kDa

Clonality: Rabbit monoclonal antibody

Clone ID: 23GB1705

Species Reactivity: Human, mouse, rat

Applications Tested: Western blotting (WB), flow cytometry (FCM)

## Immunogen

A synthesized peptide derived from human ACSS2

## Isotype

Rabbit IgG

## Storage Buffer

Supplied in PBS (pH 7.4) containing 50% glycerol, and 0.02% sodium azide.

## Storage

Store at -20 °C for one year.

## Recommended Dilutions

Western Blotting (WB): 1:500-1:2,500

Flow Cytometry (FCM): 1:2,000

---

### SUPPORT

SUPPORT@GENUINBIOTECH.COM  
TEL: +1-540-855-7041

### ORDERS

SALES@GENUINBIOTECH.COM  
FAX: +1-540-855-7041

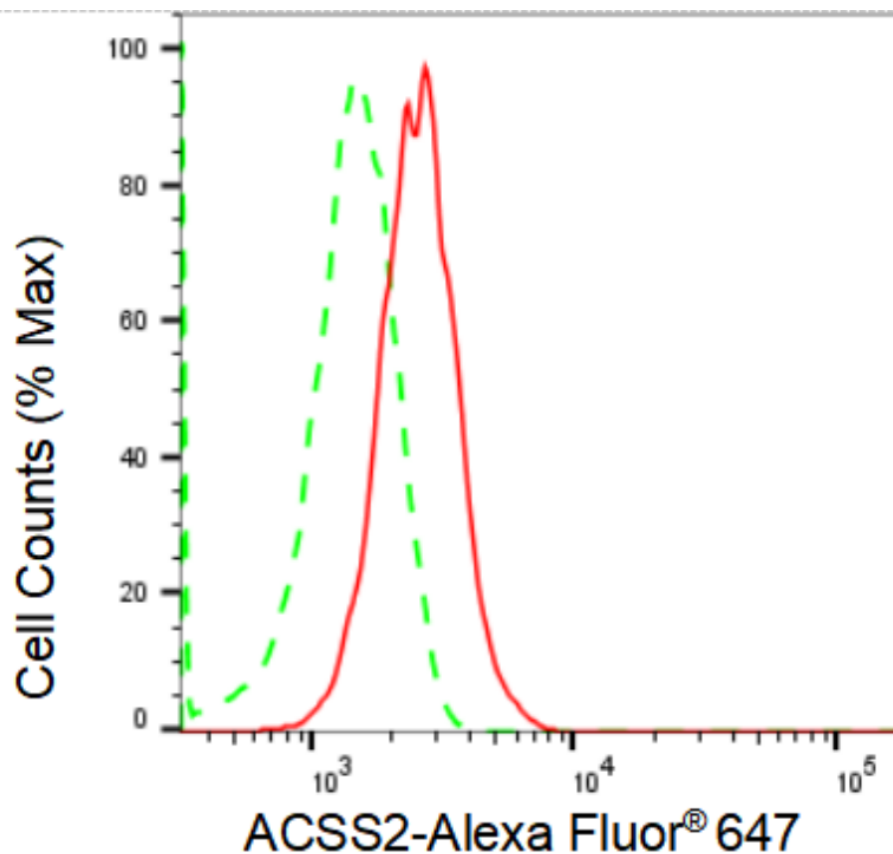
[WWW.GENUINBIOTECH.COM](http://WWW.GENUINBIOTECH.COM)

## KD-Validated Anti-ACSS2 Recombinant Rabbit Monoclonal Antibody

PAGE 2

**Note:** This product is for research use only.

### Validation Data



Copyright ©2024 Genuin Biotechnologies LLC

Flow cytometric analysis of ACSS2 expression in HepG2 cells using ACSS2 antibody (Cat#69177, 1:2,000). Green, isotype control; red, ACSS2.

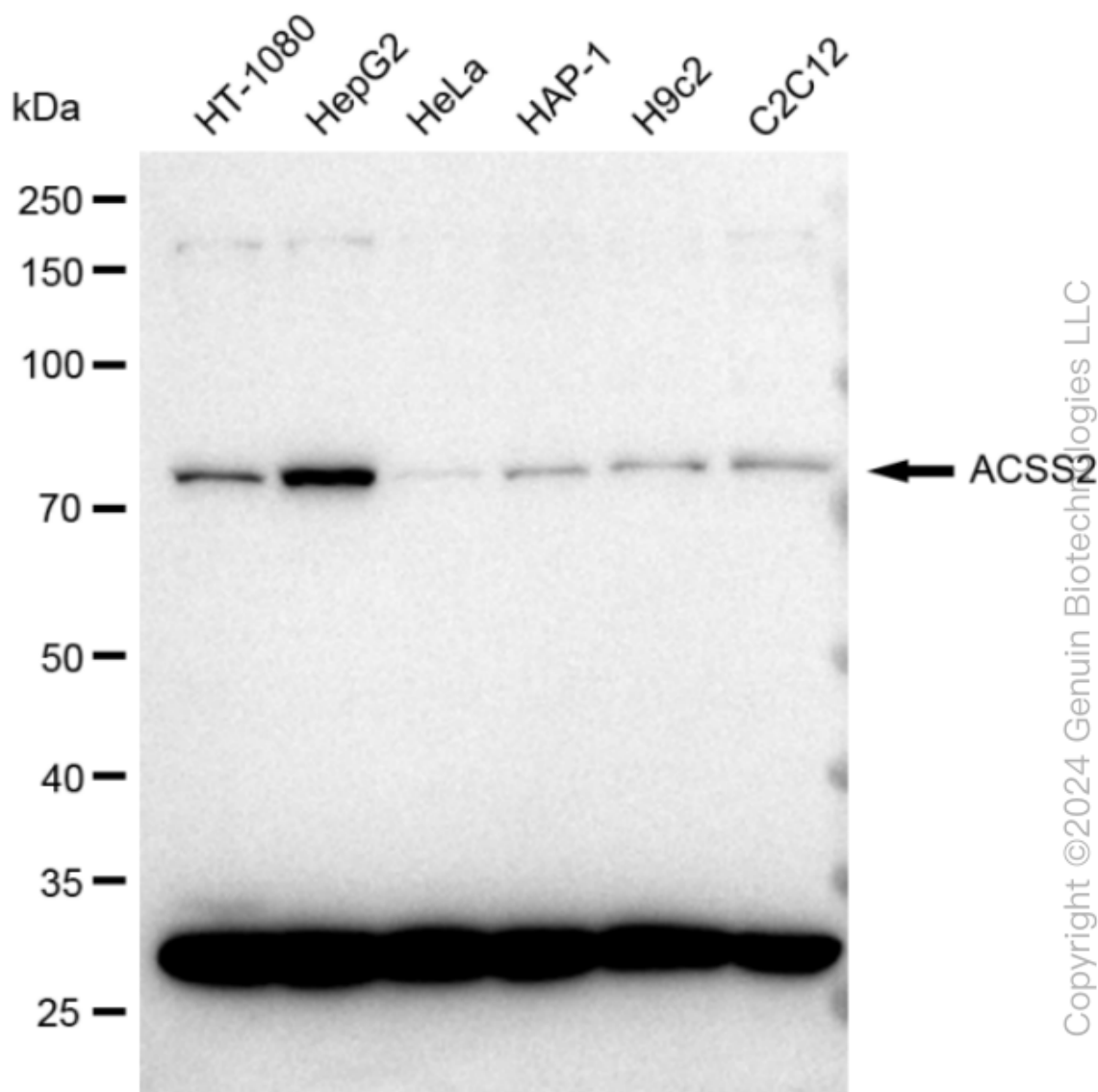
#### SUPPORT

SUPPORT@GENUINBIOTECH.COM  
TEL: +1-540-855-7041

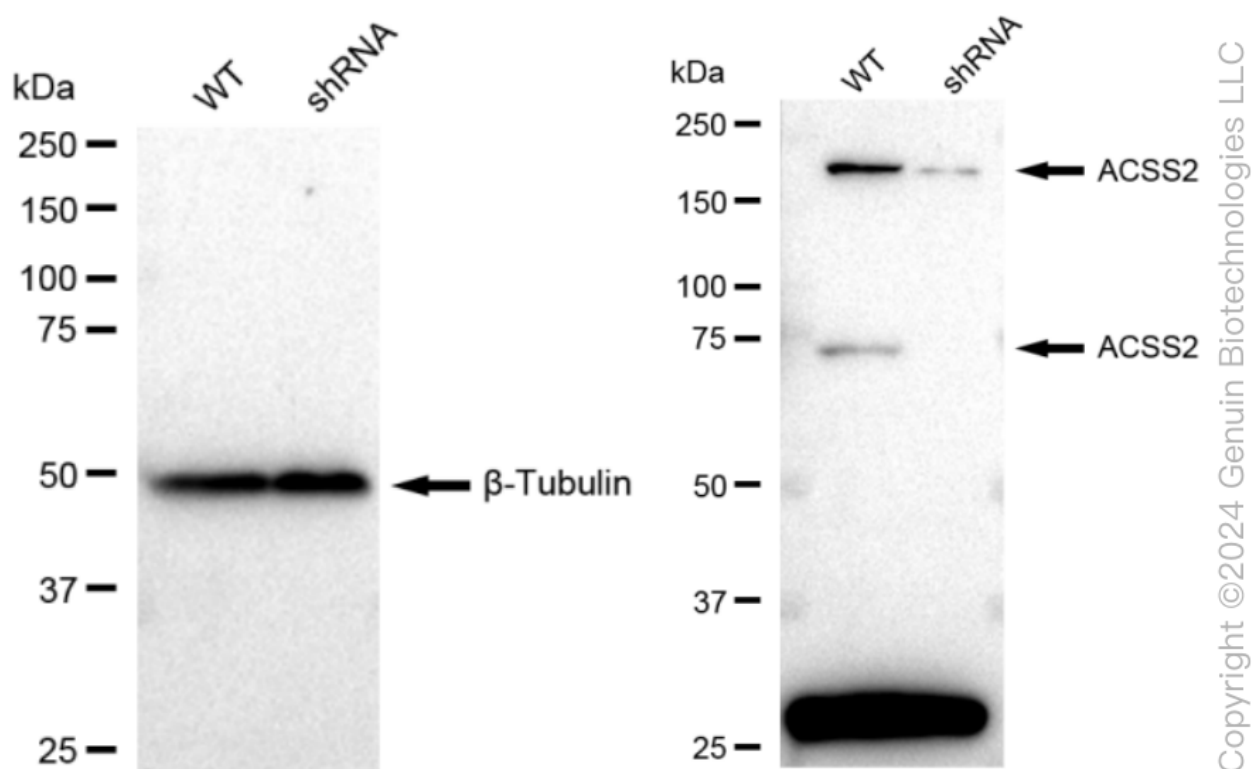
#### ORDERS

SALES@GENUINBIOTECH.COM  
FAX: +1-540-855-7041

[WWW.GENUINBIOTECH.COM](http://WWW.GENUINBIOTECH.COM)



Western blotting analysis using anti-ACSS2 antibody (Cat#69177). Total cell lysates (45 µg) from various cell lines were loaded and separated by SDS-PAGE. The blot was incubated with anti-ACSS2 antibody (Cat#69177, 1:2,500) and HRP-conjugated goat anti-rabbit secondary antibody (Cat#201, 1: 20,000) respectively. Image was developed using FeQ™ ECL Substrate Kit (Cat#226). ACSS2, acyl-CoA synthetase short chain family member 2.



Western blotting analysis using anti-ACSS2 antibody (Cat#69177). ACSS2 expression in wild type (WT) and ACSS2 shRNA knockdown (KD) HeLa cells with 30  $\mu$ g of total cell lysates.  $\beta$ -Tubulin serves as a loading control. The blot was incubated with anti-ACSS2 antibody (Cat#69177, 1:5,000) and HRP-conjugated goat anti-rabbit secondary antibody (Cat#201, 1:20,000) respectively. Image was developed using FeQ™ ECL Substrate Kit (Cat#226).