

KD-Validated Anti-Phospho-PKR (T451) Recombinant Rabbit Monoclonal Antibody



Catalog #: 69322

Aliases

eIF-2A protein kinase 2; Protein kinase RNA-activated; PKR; p68 kinase; P1/eIF-2A protein kinase

Background

Gene Name: EIF2AK2

NCBI Gene Entry: [5610](#)

UniProt Entry: [P19525](#)

Application Information

Molecular Weight: Predicted, 62 kDa, observed, 68 kDa

Clonality: Rabbit monoclonal antibody

Clone ID: 23GB1710

Species Reactivity: Human, mouse, rat

Applications Tested: Western blotting (WB), flow cytometry (FCM), immunocytochemistry (IC)

Immunogen

A synthesized peptide derived from human Phospho-Phospho-PKR (T451)

Isotype

Rabbit IgG

Storage Buffer

Supplied in PBS (pH 7.4) containing 50% glycerol, and 0.02% sodium azide.

Storage

Store at -20 °C for one year.

Recommended Dilutions

Western Blotting (WB): 1:1,000-1:5,000

Flow Cytometry (FCM): 1:2,000

Immunocytochemistry (IC): 1:100-1:1,000

Note: This product is for research use only.

Validation Data

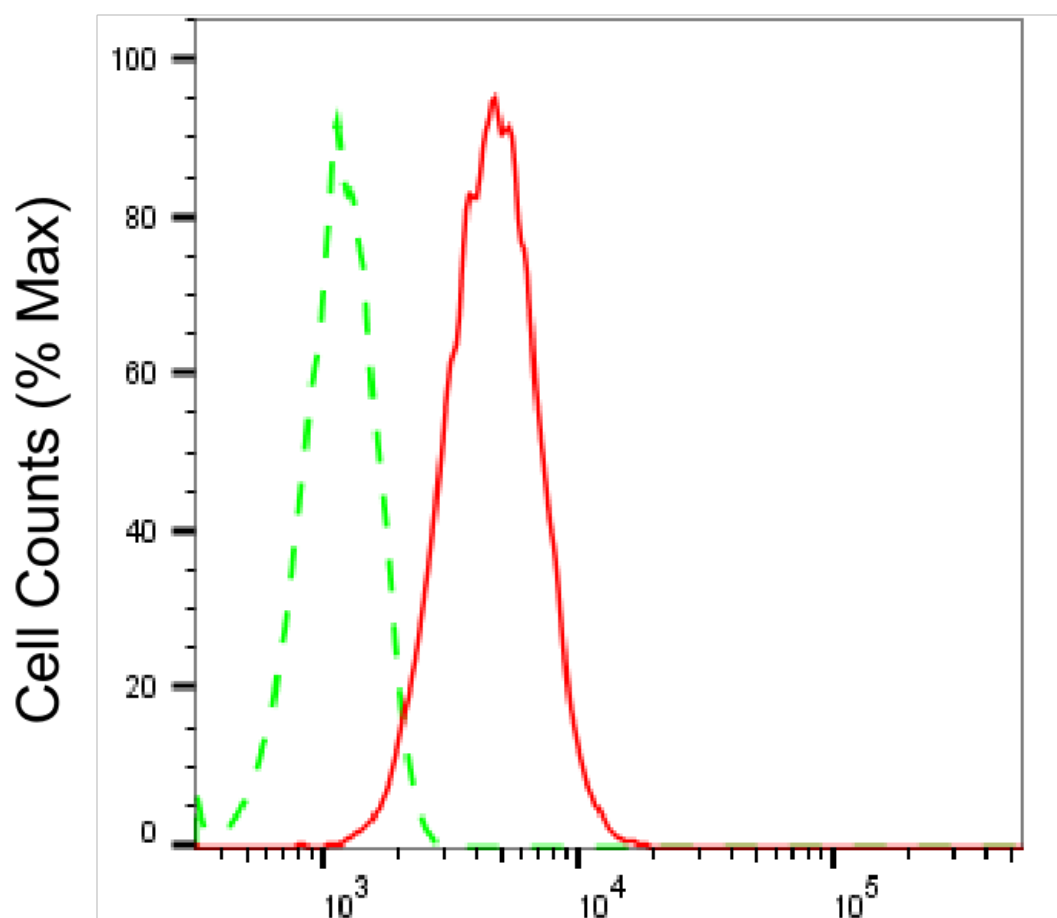
SUPPORT

SUPPORT@GENUINBIOTECH.COM
TEL: +1-540-855-7041

ORDERS

SALES@GENUINBIOTECH.COM
FAX: +1-540-855-7041

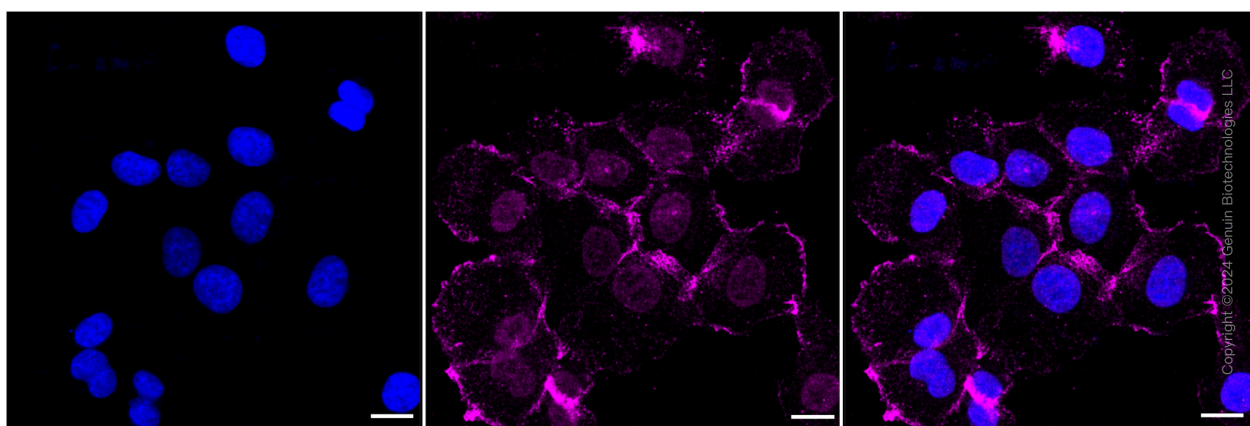
WWW.GENUINBIOTECH.COM



Copyright ©2025 Genuin Biotechnologies LLC

Phospho-Phospho-PKR (T451)-Alexa Fluor® 647

Flow cytometric analysis of Phospho-Phospho-PKR (T451) expression in HT-1080 cells using anti-Phospho-Phospho-PKR (T451) antibody (Cat#69322, 1:2,000). Green, isotype control; red, Phospho-Phospho-PKR (T451).



Immunocytochemical staining of HT-1080 cells with Phospho-PKR (T451) antibody (Cat#69322, 1:1,000). Nuclei were stained blue with DAPI; Phospho-PKR (T451) was stained

SUPPORT

SUPPORT@GENUINBIOTECH.COM
TEL: +1-540-855-7041

ORDERS

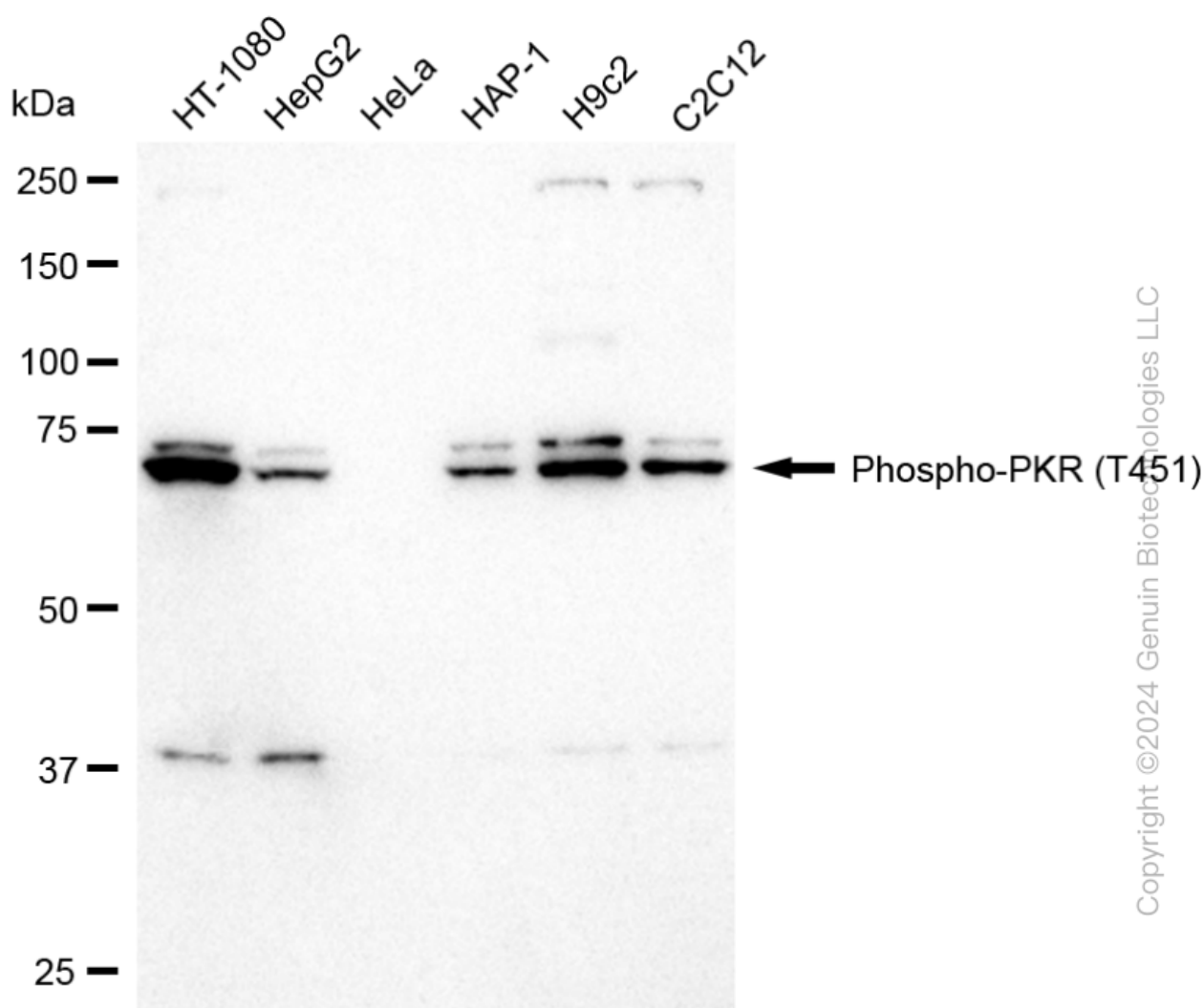
SALES@GENUINBIOTECH.COM
FAX: +1-540-855-7041

WWW.GENUINBIOTECH.COM

KD-Validated Anti-Phospho-PKR (T451) Recombinant Rabbit Monoclonal Antibody

PAGE 3

magenta with Alexa Fluor® 647. Images were taken using Leica stellaris 5. Protein abundance based on laser Intensity and smart gain: Medium. Scale bar: 20 µm.



Western blotting analysis using anti-Phospho-PKR (T451) antibody (Cat#69322). Total cell lysates (30 µg) from various cell lines were loaded and separated by SDS-PAGE. The blot was incubated with anti-Phospho-PKR (T451) antibody (Cat#69322, 1:5,000) and HRP-conjugated goat anti-rabbit secondary antibody (Cat#201, 1:20,000) respectively. Image was developed using FeQ™ ECL Substrate Kit (Cat#226).

SUPPORT

SUPPORT@GENUINBIOTECH.COM
TEL: +1-540-855-7041

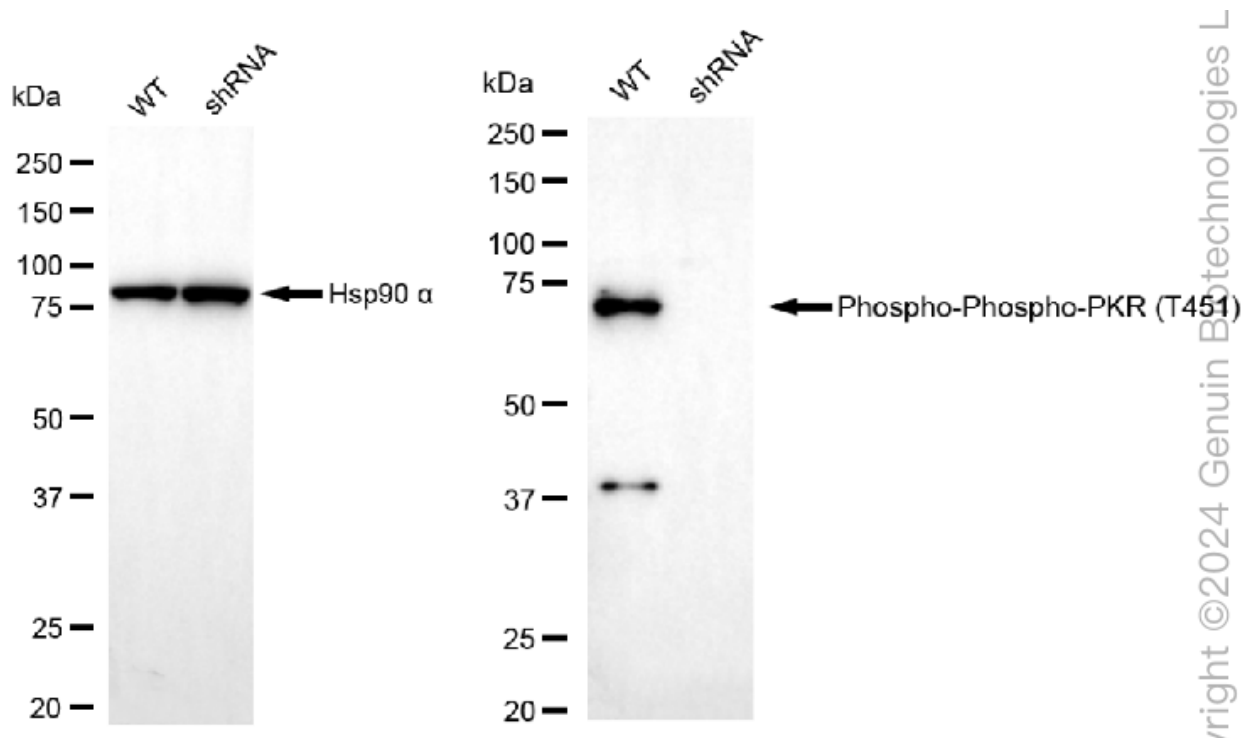
ORDERS

SALES@GENUINBIOTECH.COM
FAX: +1-540-855-7041

WWW.GENUINBIOTECH.COM

KD-Validated Anti-Phospho-PKR (T451) Recombinant Rabbit Monoclonal Antibody

PAGE 4



Western blotting analysis using anti-Phospho-PKR (T451) antibody (Cat#69322). Phospho-PKR (T451) expression in wild type (WT) and phospho-PKR (T451) shRNA knockdown (KD) HeLa cells with 30 µg of total cell lysates. β-Tubulin serves as a loading control. The blot was incubated with anti-Phospho-PKR (T451) antibody (Cat#69322, 1:5,000) and HRP-conjugated goat anti-rabbit secondary antibody (Cat#201, 1:20,000) respectively. Image was developed using FeQ™ ECL Substrate Kit (Cat#226).

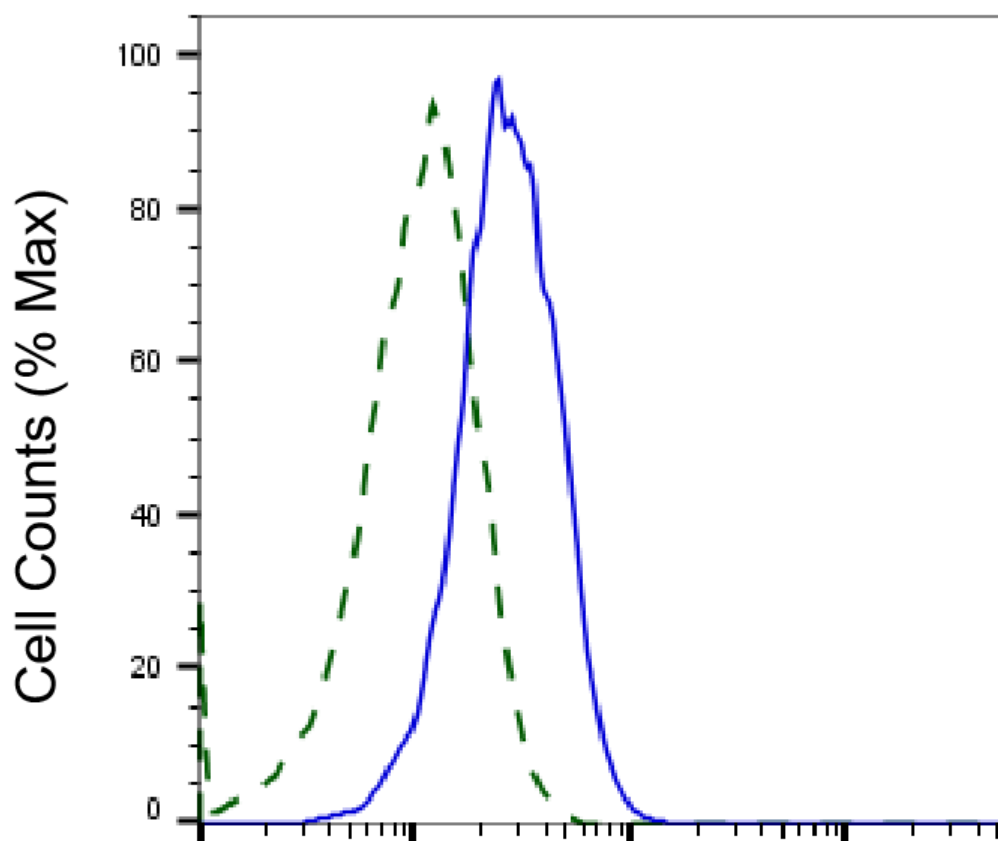
SUPPORT

SUPPORT@GENUINBIOTECH.COM
TEL: +1-540-855-7041

ORDERS

SALES@GENUINBIOTECH.COM
FAX: +1-540-855-7041

WWW.GENUINBIOTECH.COM



Copyright ©2025 Genuin Biotechnologies LLC

Phospho-PKR (T451)-Alexa Fluor® 647

Validation of PKR knockdown using flow cytometry. Wild-type(WT, Blue) and knockdown(KD, Green) HeLa cells were stained with anti-Phospho-PKR (T451) antibody (Cat#69322, 1:2,000) and analyzed using CytoFLEX.