

KD-Validated Anti-EHMT2/G9A Recombinant Rabbit Monoclonal Antibody



Catalog #: 69352

Aliases

KMT1C; G9A; C6orf3; BAT8; Euchromatic Histone-Lysine N-Methyltransferase; Histone-Lysine N-Methyltransferase EHMT2; Histone H3-K9 Methyltransferase; HLA-B Associated Transcript 8; Lysine N-Methyltransferase 1C; H3-K9-HMTase; Em:AF134726.3; NG36/G9a; NG36; Histone-Lysine N-Methyltransferase, H3 Lysine-9 Specific 3; Chromosome 6 Open Reading Frame 30; Ankyrin Repeat-Containing Protein; G9A Histone Methyltransferase; HLA-B-Associated Transcript 8; EC 2.1.1.367; Protein G9a; EC 2.1.1.-; GAT8

Background

Gene Name: EHMT2

NCBI Gene Entry: [10919](#)

UniProt Entry: [Q96KQ7](#)

Application Information

Molecular Weight: Predicted, 132 kDa, observed, 160-170 kDa

Clonality: Rabbit monoclonal antibody

Clone ID: 23GB820

Species Reactivity: Human

Applications Tested: Western blotting (WB), flow cytometry (FCM), immunocytochemistry (IC)

Immunogen

A synthesized peptide derived from human EHMT2/G9A

Isotype

Rabbit IgG

Storage Buffer

Supplied in PBS (pH 7.4) containing 50% glycerol, and 0.02% sodium azide.

Storage

Store at -20 °C for one year.

Recommended Dilutions

Western Blotting (WB): 1:2,000-1:10,000

Flow Cytometry (FCM): 1:2,000

Immunocytochemistry (IC): 1:100-1:1,000

SUPPORT

SUPPORT@GENUINBIOTECH.COM
TEL: +1-540-855-7041

ORDERS

SALES@GENUINBIOTECH.COM
FAX: +1-540-855-7041

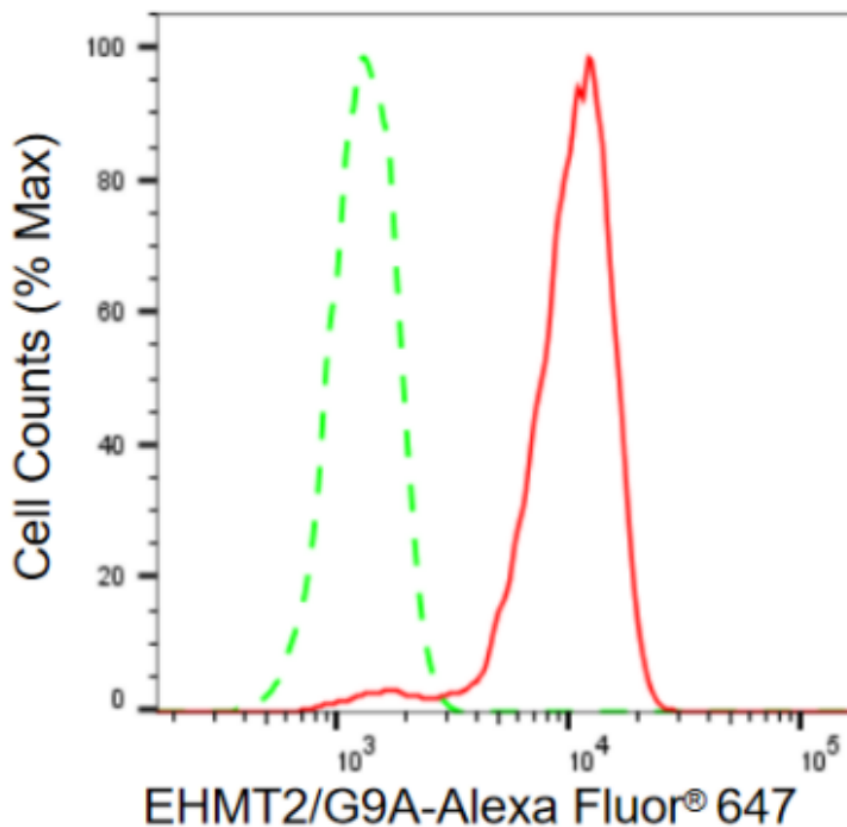
WWW.GENUINBIOTECH.COM

KD-Validated Anti-EHMT2/G9A Recombinant Rabbit Monoclonal Antibody

PAGE 2

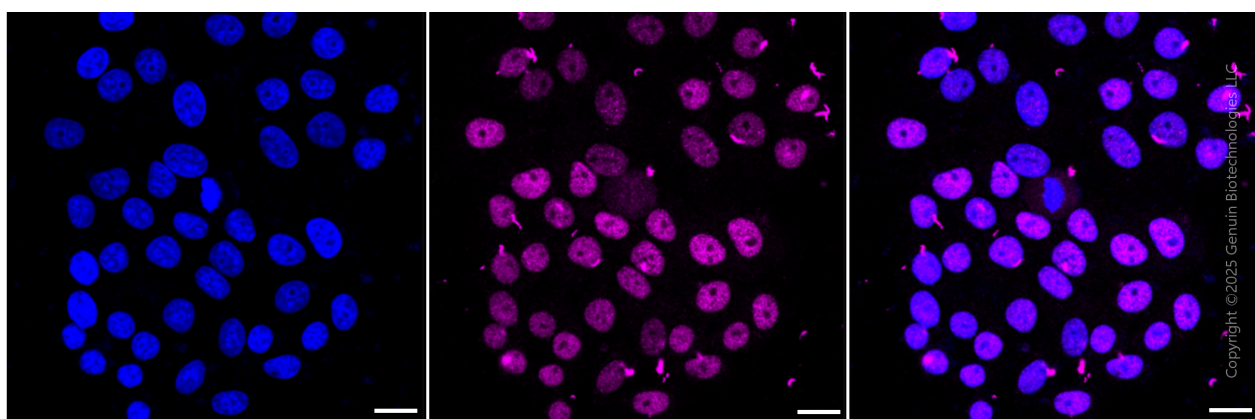
Note: This product is for research use only.

Validation Data



Copyright ©2024 Genuin Biotechnologies LLC

Flow cytometric analysis of EHMT2/G9A expression in HeLa cells using EHMT2/G9A antibody (Cat#69352, 1:2,000). Green, isotype control; red, EHMT2/G9A.



Copyright ©2025 Genuin Biotechnologies LLC

Immunocytochemical staining of HepG2 cells with anti-EHMT2/G9A antibody (Cat#69352, 1:1000). Nuclei were stained blue with DAPI; EHMT2/G9A was stained magenta with Alexa Fluor® 647. Images were taken using Leica stellaris 5. Protein abundance based on laser Intensity

SUPPORT

SUPPORT@GENUINBIOTECH.COM
TEL: +1-540-855-7041

ORDERS

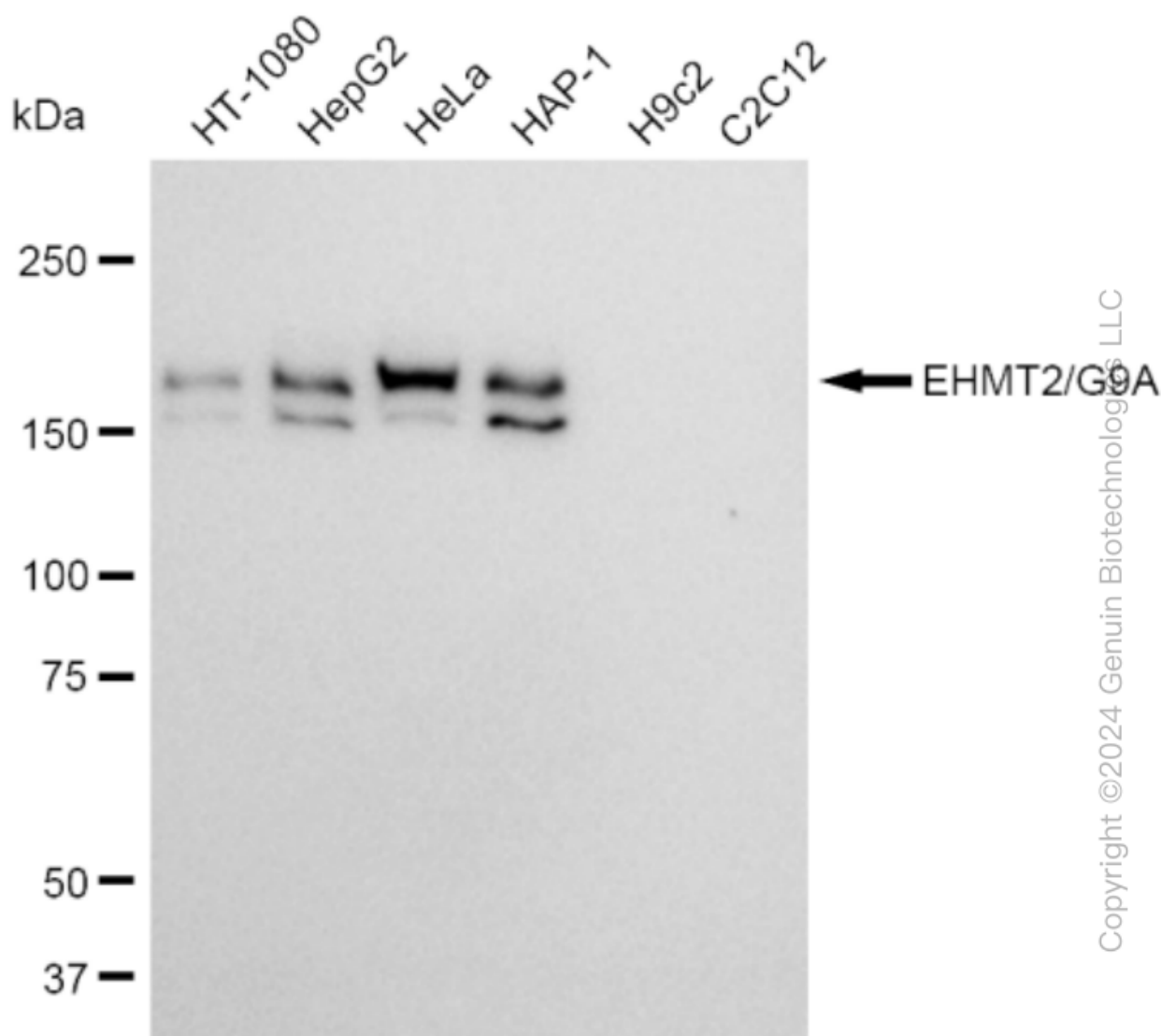
SALES@GENUINBIOTECH.COM
FAX: +1-540-855-7041

WWW.GENUINBIOTECH.COM

KD-Validated Anti-EHMT2/G9A Recombinant Rabbit Monoclonal Antibody

PAGE 3

and smart gain: Medium. Scale bar, 20 μ m.



Western blotting analysis using anti-EHMT2/G9A antibody (Cat#69352). Total cell lysates (30 μ g) from various cell lines were loaded and separated by SDS-PAGE. The blot was incubated with anti-EHMT2/G9A antibody (Cat#69352, 1:10,000) and HRP-conjugated goat anti-rabbit secondary antibody (Cat#201, 1:20,000) respectively. Image was developed using FeQ™ ECL Substrate Kit (Cat#226).

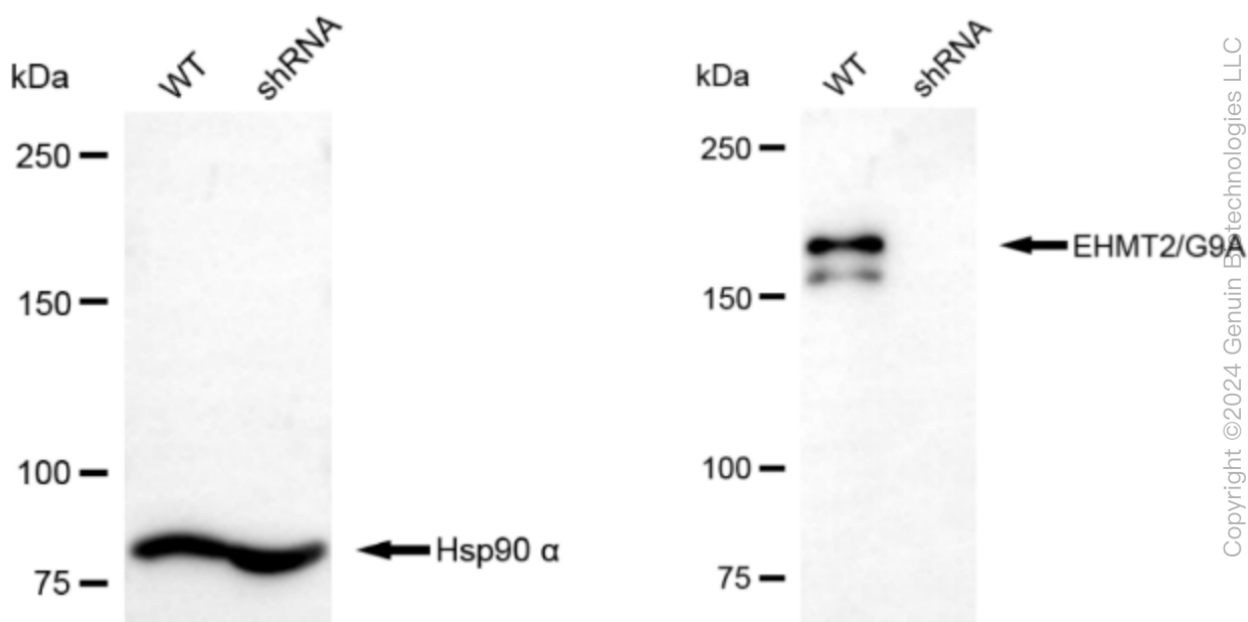
SUPPORT

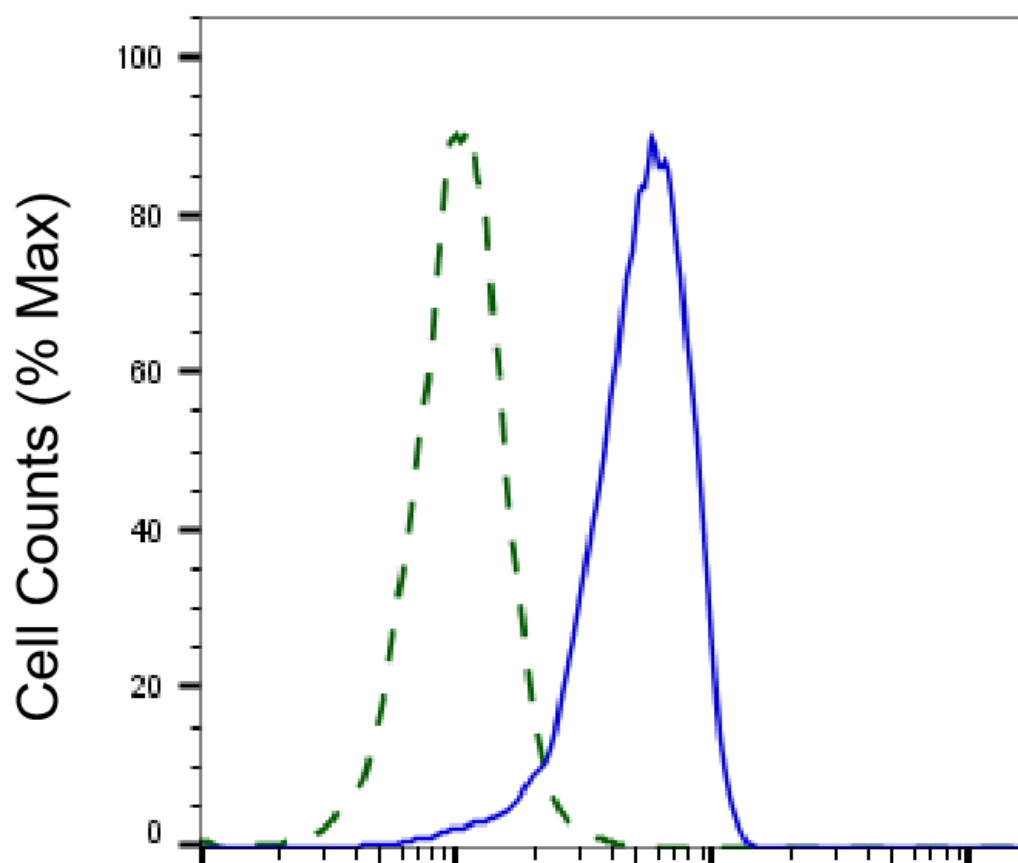
SUPPORT@GENUINBIOTECH.COM
TEL: +1-540-855-7041

ORDERS

SALES@GENUINBIOTECH.COM
FAX: +1-540-855-7041

WWW.GENUINBIOTECH.COM

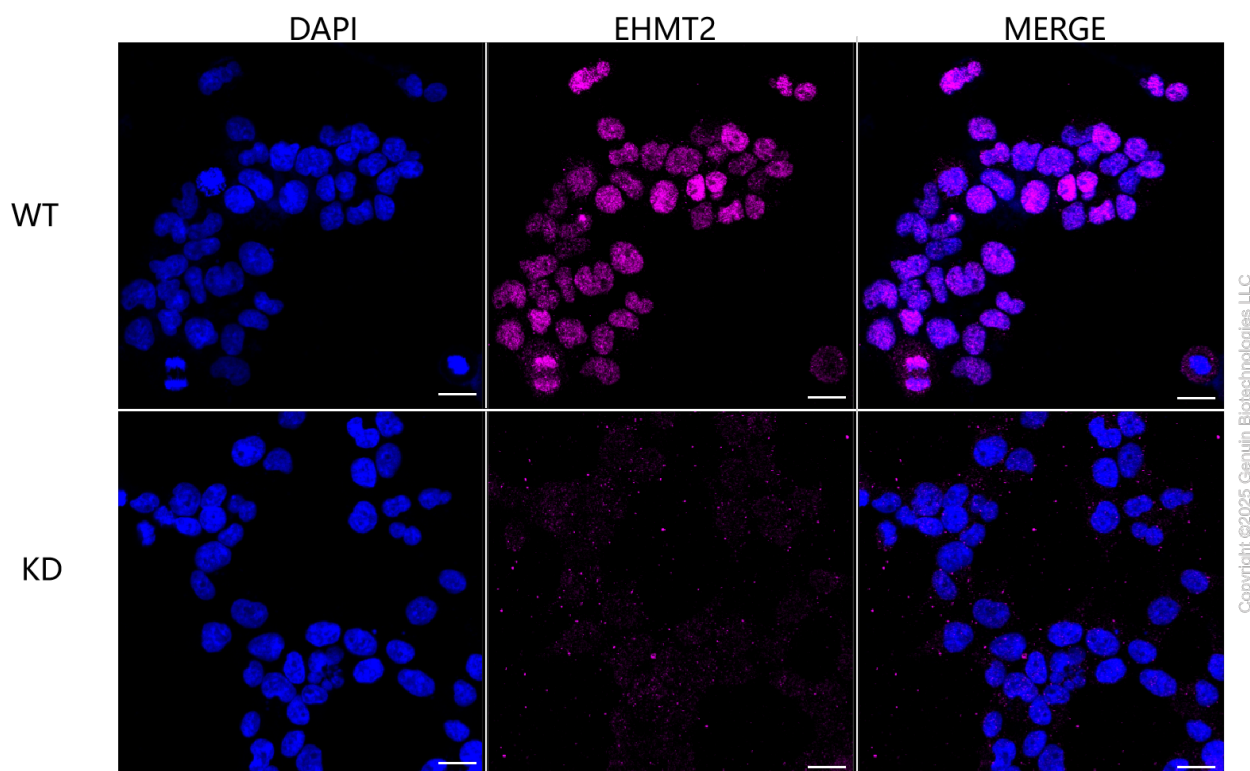




Copyright ©2025 Genuin Biotechnologies LLC

EHMT2/G9A-Alexa Fluor® 647

Validation of EHMT2/G9A knockdown using flow cytometry. Wild-type(WT, Blue) and knockdown(KD, Green) HeLa cells were stained with anti-EHMT2/G9A antibody (Cat#69352, 1:2,000) and analyzed using CytoFLEX.



Immunocytochemical staining of HeLa cells using anti-EHMT2 antibody (Cat#69352, 1:1,000), Top panel: wild-type (WT); Bottom panel: EHMT2 shRNA knockdown (KD). Nuclei were stained blue with DAPI; EHMT2 was stained magenta with Alexa Fluor® 647. Scale bar, 20 μ m. Permeabilization: Triton.