

# KD-Validated Anti-Brain derived neurotrophic factor Recombinant Rabbit Monoclonal



**Catalog #: 69354**

## Aliases

BDNF; Brain Derived Neurotrophic Factor; Brain-Derived Neurotrophic Factor; Neurotrophin; Abrineurin; ANON2; BULN2

## Background

Gene Name: BDNF

NCBI Gene Entry: [627](#)

UniProt Entry: [P23560](#)

## Application Information

Molecular Weight: Predicted, 28 kDa, observed, 28 kDa

Clonality: Rabbit monoclonal antibody

Clone ID: 23GB3005

Species Reactivity: Human, mouse, rat

Applications Tested: Western blotting (WB), flow cytometry (FCM), immunocytochemistry (IC)

## Immunogen

A synthesized peptide derived from human BDNF

## Isotype

Rabbit IgG

## Storage Buffer

Supplied in PBS (pH 7.4) containing 50% glycerol, and 0.02% sodium azide.

## Storage

Store at -20 °C for one year.

## Recommended Dilutions

Western Blotting (WB): 1:1,000-1:5,000

Flow Cytometry (FCM): 1:2,000

Immunocytochemistry (IC): 1:100-1:1,000

**Note:** This product is for research use only.

## Validation Data

---

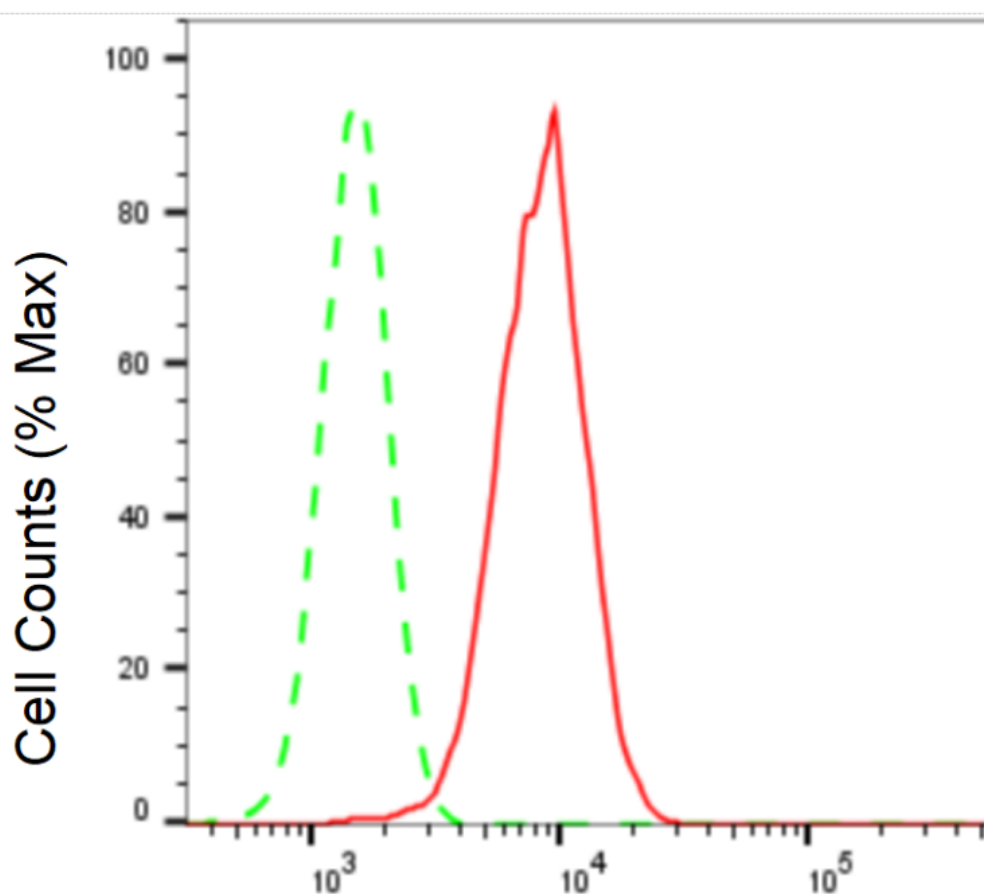
### SUPPORT

SUPPORT@GENUINBIOTECH.COM  
TEL: +1-540-855-7041

### ORDERS

SALES@GENUINBIOTECH.COM  
FAX: +1-540-855-7041

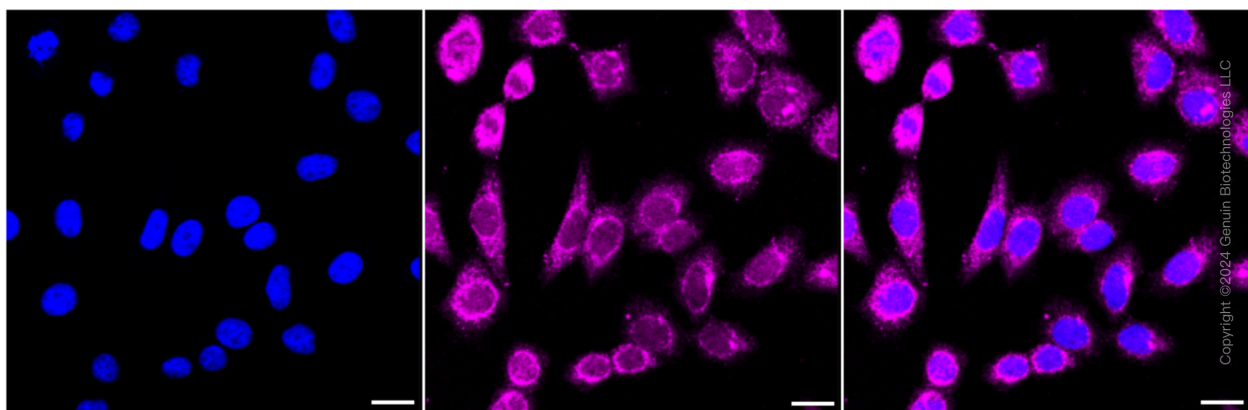
[WWW.GENUINBIOTECH.COM](http://WWW.GENUINBIOTECH.COM)



Copyright ©2024 Genuin Biotechnologies LLC

## Brain derived neurotrophic factor-Alexa Fluor® 647

Flow cytometric analysis of Brain derived neurotrophic factor expression in HepG2 cells using Brain derived neurotrophic factor antibody (Cat#69354, 1:2,000). Green, isotype control; red, Brain derived neurotrophic factor.



Immunocytochemical staining of HepG2 cells with Brain derived neurotrophic factor antibody (Cat#69354, 1:1,000). Nuclei were stained blue with DAPI; Brain derived neurotrophic factor was stained magenta with Alexa Fluor® 647. Images were taken using Leica stellaris 5. Protein

### SUPPORT

SUPPORT@GENUINBIOTECH.COM  
TEL: +1-540-855-7041

### ORDERS

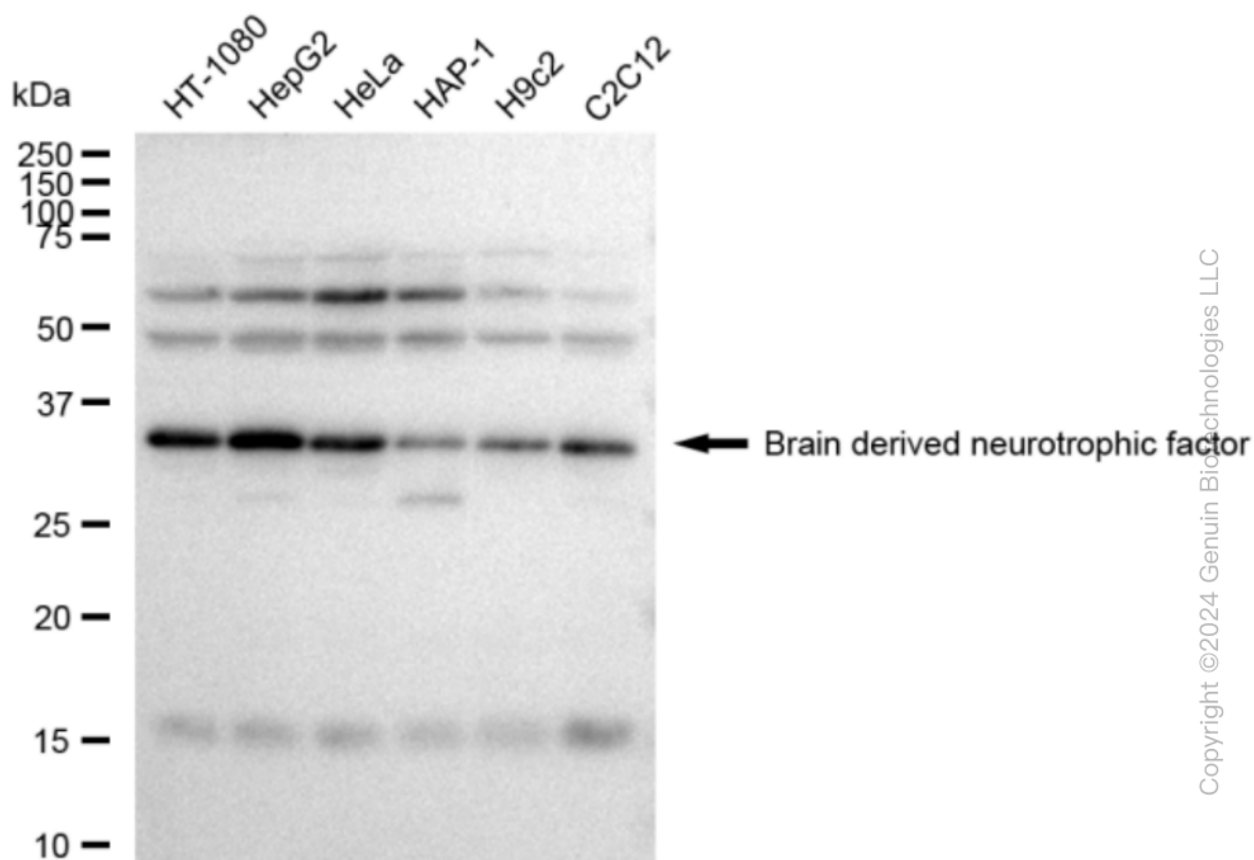
SALES@GENUINBIOTECH.COM  
FAX: +1-540-855-7041

[WWW.GENUINBIOTECH.COM](http://WWW.GENUINBIOTECH.COM)

## KD-Validated Anti-Brain derived neurotrophic factor Recombinant Rabbit Monoclonal

PAGE 3

abundance based on laser Intensity and smart gain: Medium. Scale bar: 20  $\mu$ m.



Western blotting analysis using anti-Brain derived neurotrophic factor antibody (Cat#69354). Total cell lysates (30  $\mu$ g) from various cell lines were loaded and separated by SDS-PAGE. The blot was incubated with anti-Brain derived neurotrophic factor antibody (Cat#69354, 1:5,000) and HRP-conjugated goat anti-rabbit secondary antibody (Cat#201, 1:20,000) respectively. Image was developed using FeQ™ ECL Substrate Kit (Cat#226).

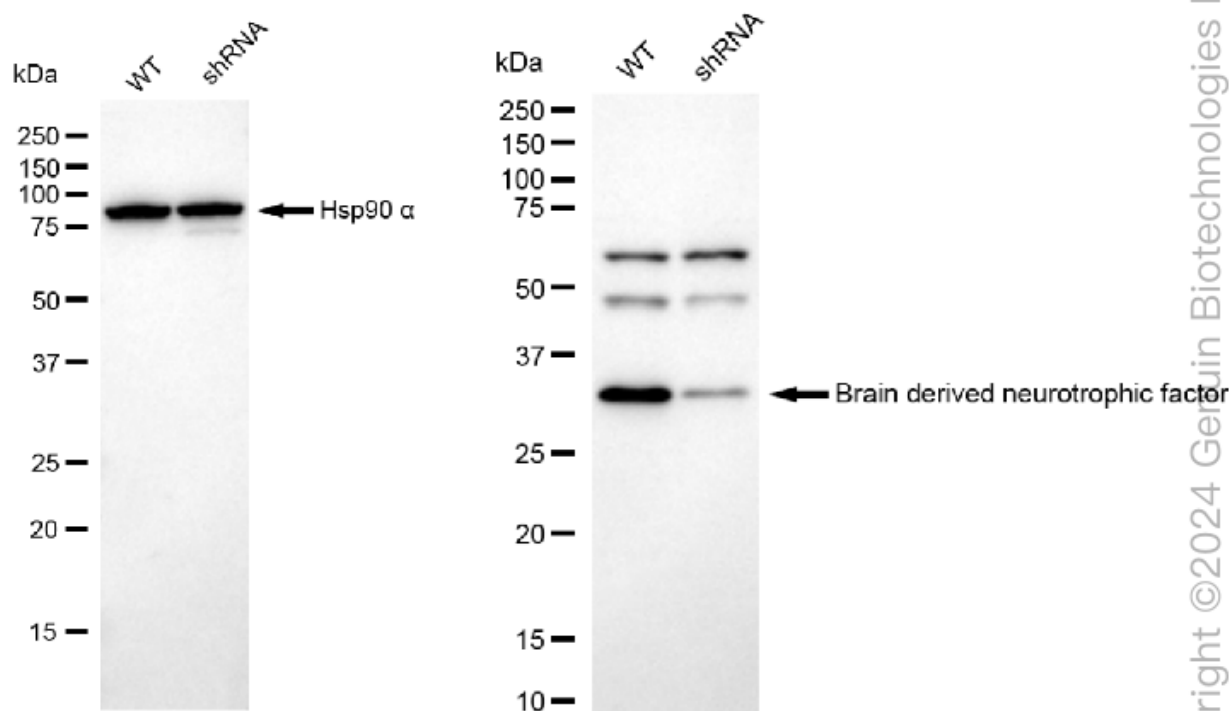
### SUPPORT

SUPPORT@GENUINBIOTECH.COM  
TEL: +1-540-855-7041

### ORDERS

SALES@GENUINBIOTECH.COM  
FAX: +1-540-855-7041

WWW.GENUINBIOTECH.COM



Western blotting analysis using anti-Brain derived neurotrophic factor antibody (Cat#69354). Brain derived neurotrophic factor expression in wild type (WT) and Brain derived neurotrophic factor shRNA knockdown (KD) HeLa cells with 30  $\mu$ g of total cell lysates.  $\beta$ -Tubulin serves as a loading control. The blot was incubated with anti-Brain derived neurotrophic factor antibody (Cat#69354, 1:5,000) and HRP-conjugated goat anti-rabbit secondary antibody (Cat#201, 1:20,000) respectively. Image was developed using FeQ™ ECL Substrate Kit (Cat#226).