

# KD-Validated Anti-Phospho-PKC alpha (Ser657) Rabbit Monoclonal Antibody



**Catalog #: 69411**

## Aliases

Protein Kinase C; Alpha; EC 2.7.11.13; PKCA1; AAG6; PKC-A; Aging-Associated Gene 6; PKC-alpha; Protein Kinase C Alpha Type; PRKACA; EC 2.7.11

## Background

Gene Name: PRKCA

NCBI Gene Entry: [5578](#)

UniProt Entry: [P17252](#)

## Application Information

Molecular Weight: Predicted, 77 kDa, observed, 80 kDa

Clonality: Rabbit monoclonal antibody

Clone ID: 23GB1055

Species Reactivity: Human, mouse, rat

Applications Tested: Western blotting (WB), flow cytometry (FCM), immunocytochemistry (IC)

## Immunogen

A synthesized peptide derived from human Phospho-PKC alpha (Ser657)

## Isotype

Rabbit IgG

## Storage Buffer

Supplied in PBS (pH 7.4) containing 50% glycerol, and 0.02% sodium azide.

## Storage

Store at -20 °C for one year.

## Recommended Dilutions

Western Blotting (WB): 1:1,000-1:5,000

Flow Cytometry (FCM): 1:2,000

Immunocytochemistry (IC): 1:100-1:1,000

**Note:** This product is for research use only.

## Validation Data

---

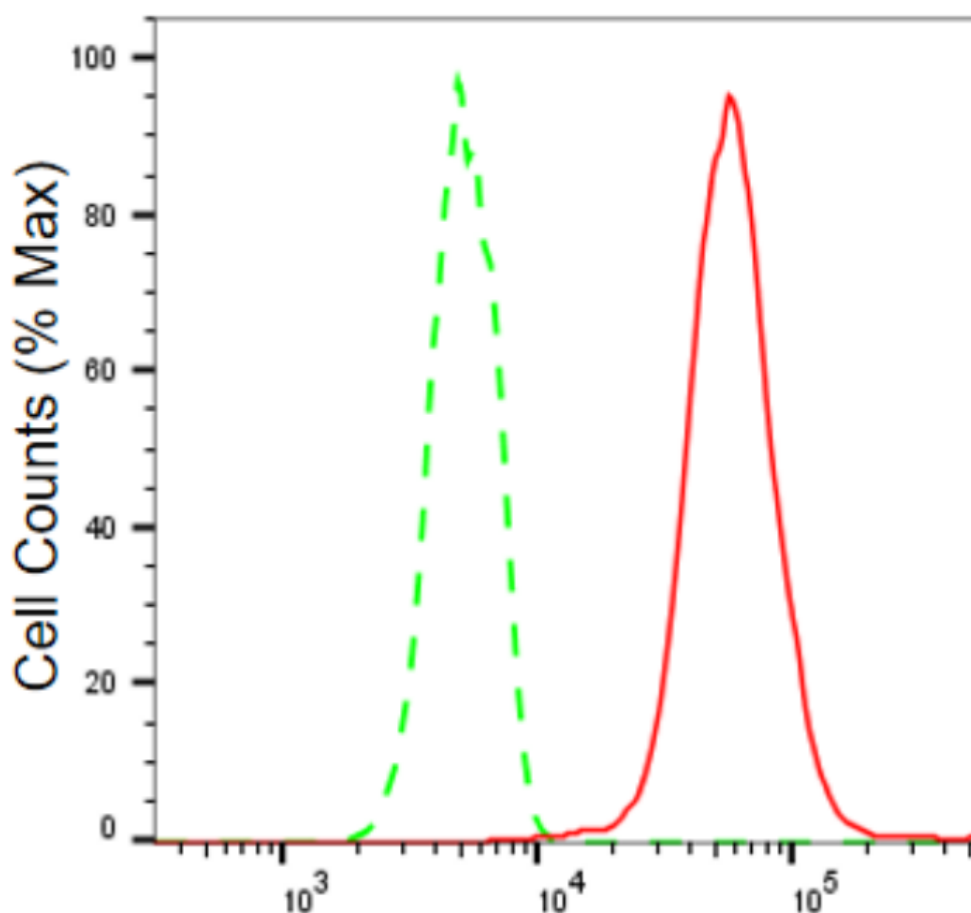
### SUPPORT

SUPPORT@GENUINBIOTECH.COM  
TEL: +1-540-855-7041

### ORDERS

SALES@GENUINBIOTECH.COM  
FAX: +1-540-855-7041

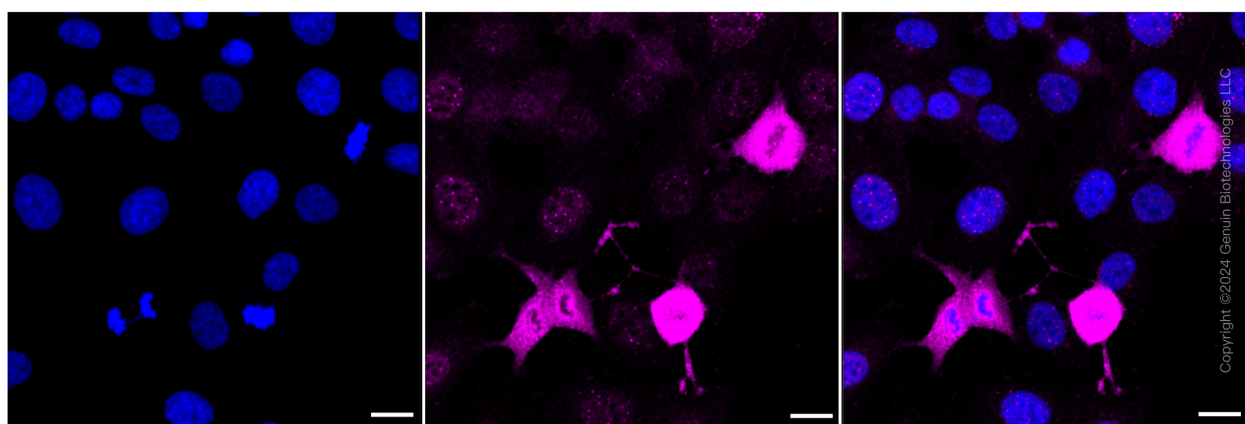
[WWW.GENUINBIOTECH.COM](http://WWW.GENUINBIOTECH.COM)



Copyright ©2024 Genuin Biotechnologies LLC

## Phospho-PKC alpha (Ser657)-Alexa Fluor® 647

Flow cytometric analysis of Phospho-PKC alpha (Ser657) expression in HT-1080 cells using Phospho-PKC alpha (Ser657) antibody (Cat#69411, 1:2,000). Green, isotype control; red, Phospho-PKC alpha (Ser657).



Copyright ©2024 Genuin Biotechnologies LLC

Immunocytochemical staining of HT-1080 cells with Phospho-PKC alpha (Ser657) antibody (Cat#69411, 1:1,000). Nuclei were stained blue with DAPI; Phospho-PKC alpha (Ser657) was

### SUPPORT

SUPPORT@GENUINBIOTECH.COM  
TEL: +1-540-855-7041

### ORDERS

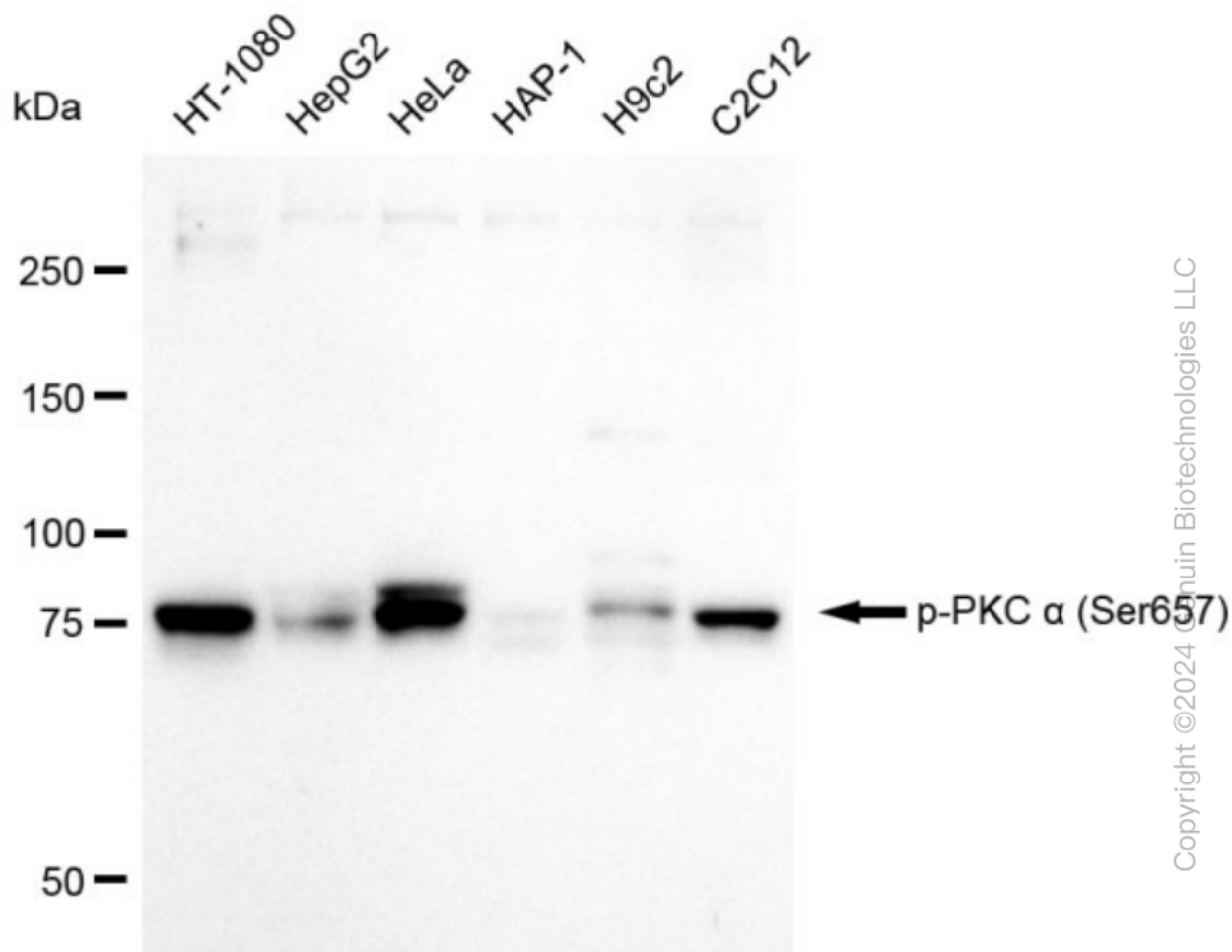
SALES@GENUINBIOTECH.COM  
FAX: +1-540-855-7041

[WWW.GENUINBIOTECH.COM](http://WWW.GENUINBIOTECH.COM)

## KD-Validated Anti-Phospho-PKC alpha (Ser657) Rabbit Monoclonal Antibody

PAGE 3

stained magenta with Alexa Fluor® 647. Images were taken using Leica stellaris 5. Protein abundance based on laser Intensity and smart gain: High. Scale bar: 20 µm.



Western blotting analysis using anti-Phospho-PKC alpha (Ser657) antibody (Cat#69411). Total cell lysates (30 µg) from various cell lines were loaded and separated by SDS-PAGE. The blot was incubated with anti-Phospho-PKC alpha (Ser657) antibody (Cat#69411, 1:5,000) and HRP-conjugated goat anti-rabbit secondary antibody (Cat#201, 1:50,000) respectively. Image was developed using FeQ™ ECL Substrate Kit (Cat#226).

### SUPPORT

SUPPORT@GENUINBIOTECH.COM  
TEL: +1-540-855-7041

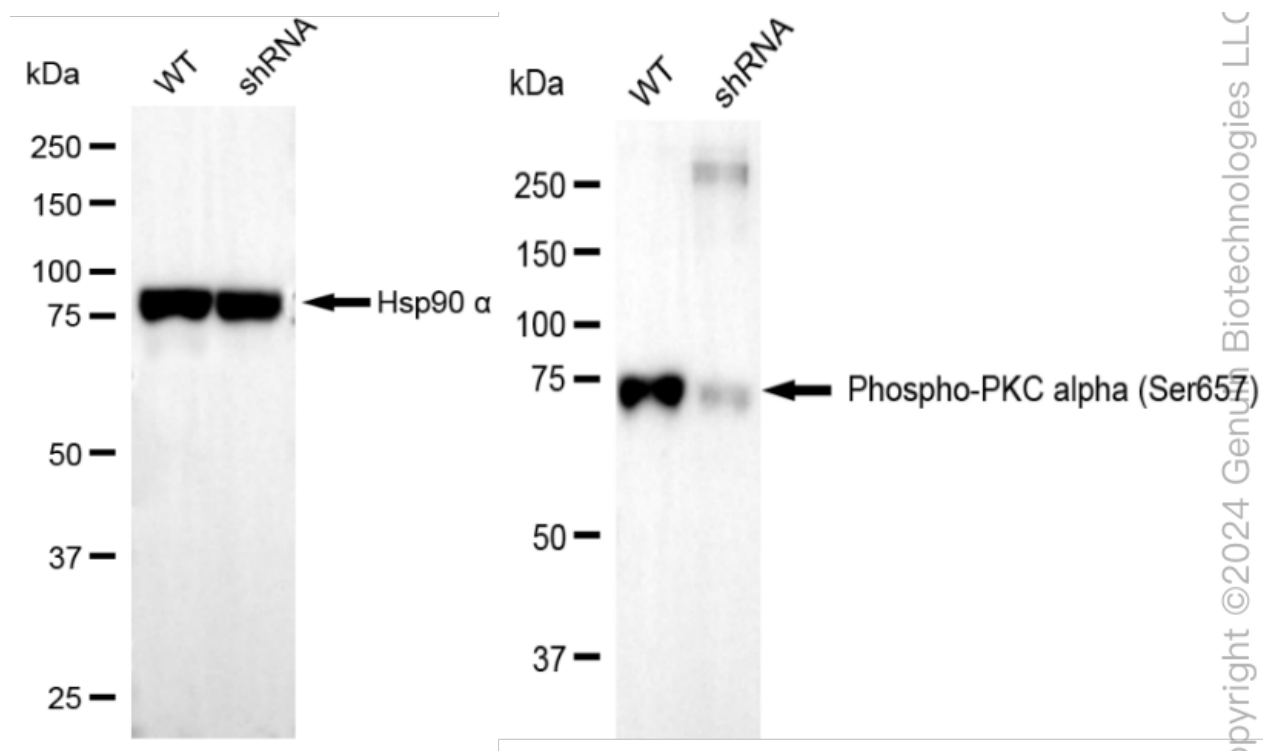
### ORDERS

SALES@GENUINBIOTECH.COM  
FAX: +1-540-855-7041

WWW.GENUINBIOTECH.COM

## KD-Validated Anti-Phospho-PKC alpha (Ser657) Rabbit Monoclonal Antibody

PAGE 4



Western blotting analysis using anti-Phospho-PKC alpha (Ser657) antibody (Cat#69411). Phospho-PKC alpha (Ser657) expression in wild type (WT) and Phospho-PKC alpha (Ser657) shRNA knockdown (KD) HT-1080 cells with 30  $\mu$ g of total cell lysates.  $\beta$ -Tubulin serves as a loading control. The blot was incubated with anti-Phospho-PKC alpha (Ser657) antibody (Cat#69411, 1:5,000) and HRP-conjugated goat anti-rabbit secondary antibody (Cat#201, 1:20,000) respectively. Image was developed using FeQ™ ECL Substrate Kit (Cat#226).

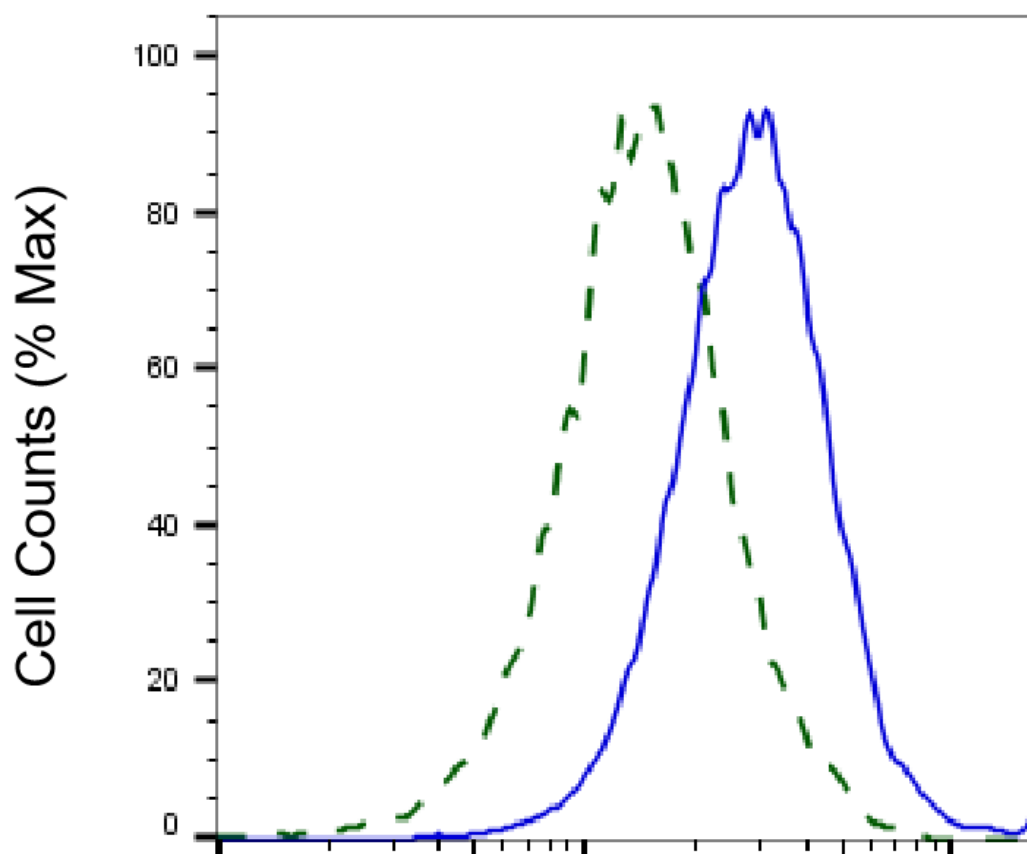
### SUPPORT

SUPPORT@GENUINBIOTECH.COM  
TEL: +1-540-855-7041

### ORDERS

SALES@GENUINBIOTECH.COM  
FAX: +1-540-855-7041

WWW.GENUINBIOTECH.COM



Copyright ©2025 Genuin Biotechnologies LLC

**Phospho-PKC alpha (Ser657)-Alexa  
Fluor® 647**

Validation of PKC alpha knockdown using flow cytometry. Wild-type(WT, Blue) and knockdown(KD, Green) HT1080 cells were stained with anti-Phospho-PKC alpha (Ser657) antibody (Cat#69411, 1:2,000) and analyzed using BD flow cytometer.