

# KD-Validated Anti-Fibronectin 1 Recombinant Rabbit Monoclonal Antibody



**Catalog #: 69510**

## Aliases

Fibronectin1; CIG; Cold-Insoluble Globulin; GFND2; LETS ; FINC; MSF; Migration-Stimulating Factor; Lnc-ABCA12-8; Fibronectin; FN; Epididymis Secretory Sperm Binding Protein; LNC-ABCA12-8; SMDCF; ED-B; GFND; FNZ

## Background

Gene Name: FN1

NCBI Gene Entry: [2335](#)

UniProt Entry: [P02751](#)

## Application Information

Molecular Weight: Predicted, 263 kDa, observed, 263 kDa

Clonality: Rabbit monoclonal antibody

Clone ID: 23GB1270

Species Reactivity: Human, mouse, rat

Applications Tested: Western blotting (WB), flow cytometry (FCM), immunocytochemistry (IC)

## Immunogen

A synthesized peptide derived from human Fibronectin

## Isotype

Rabbit IgG

## Storage Buffer

Supplied in PBS (pH 7.4) containing 50% glycerol, and 0.02% sodium azide.

## Storage

Store at -20 °C for one year.

## Recommended Dilutions

Western Blotting (WB): 1:1,000-1:5,000

Flow Cytometry (FCM): 1:2,000

Immunocytochemistry (IC): 1:100-1:1,000

**Note:** This product is for research use only.

---

### SUPPORT

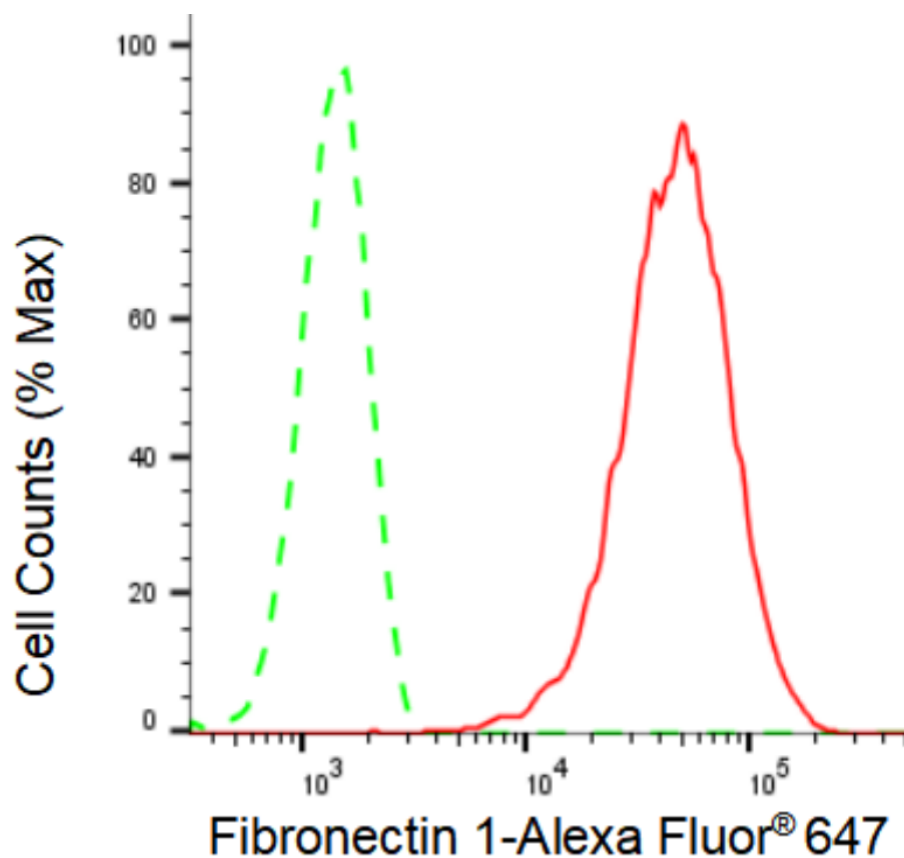
SUPPORT@GENUINBIOTECH.COM  
TEL: +1-540-855-7041

### ORDERS

SALES@GENUINBIOTECH.COM  
FAX: +1-540-855-7041

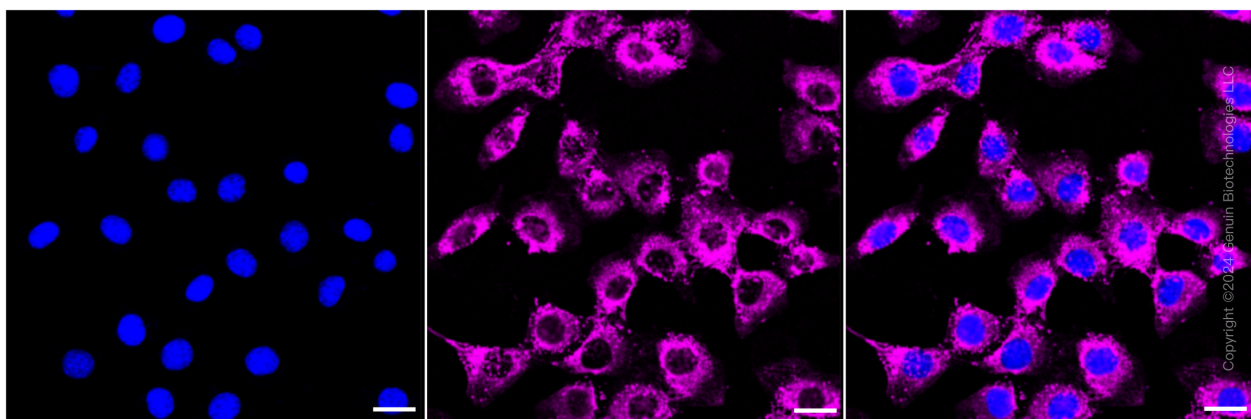
[WWW.GENUINBIOTECH.COM](http://WWW.GENUINBIOTECH.COM)

**Validation Data**



Copyright ©2024 Genuin Biotechnologies LLC

Flow cytometric analysis of Fibronectin 1 expression in C2C12 cells using Fibronectin 1 antibody (Cat#69510, 1:2,000). Green, isotype control; red, Fibronectin 1.



Copyright ©2024 Genuin Biotechnologies LLC

Immunocytochemical staining of C2C12 cells with Fibronectin 1 antibody (Cat#69510, 1:1,000). Nuclei were stained blue with DAPI; Fibronectin 1 was stained magenta with Alexa Fluor® 647. Images were taken using Leica stellaris 5. Protein abundance based on laser Intensity and smart gain: High. Scale bar: 20 µm.

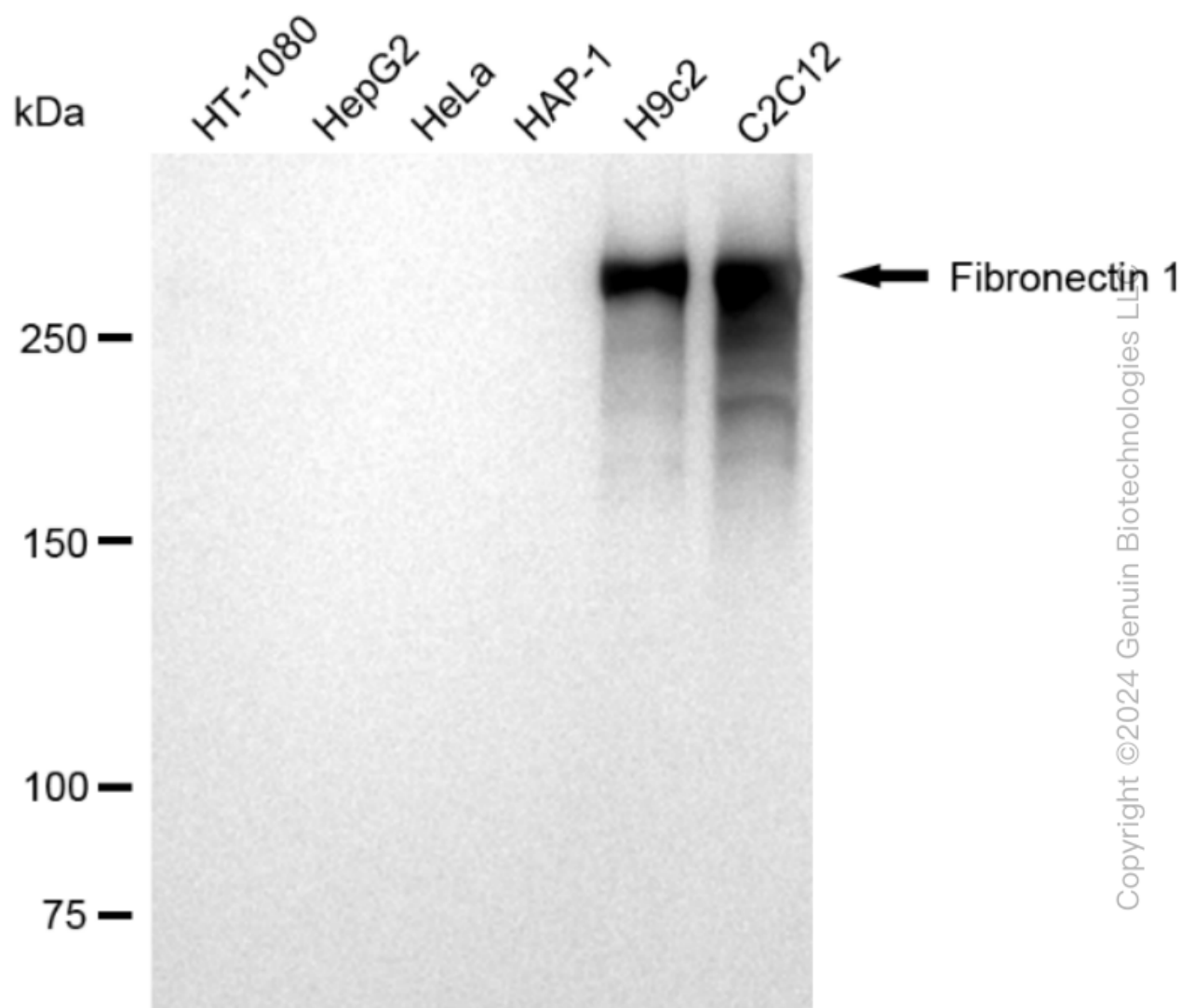
**SUPPORT**

SUPPORT@GENUINBIOTECH.COM  
TEL: +1-540-855-7041

**ORDERS**

SALES@GENUINBIOTECH.COM  
FAX: +1-540-855-7041

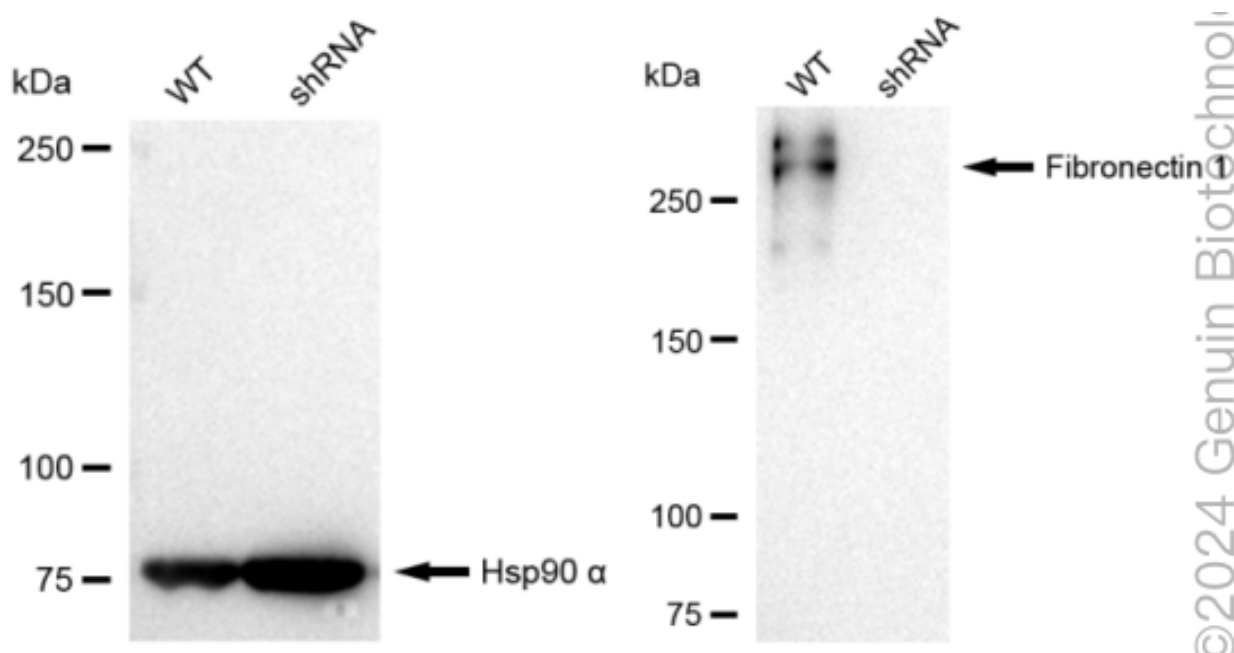
**WWW.GENUINBIOTECH.COM**



Western blotting analysis using anti-Fibronectin 1 antibody (Cat#69510). Total cell lysates (30  $\mu$ g) from various cell lines were loaded and separated by SDS-PAGE. The blot was incubated with anti-Fibronectin 1 antibody (Cat#69510, 1:5,000) and HRP-conjugated goat anti-rabbit secondary antibody (Cat#201, 1:20,000) respectively. Image was developed using FeQ™ ECL Substrate Kit (Cat#226).

## KD-Validated Anti-Fibronectin 1 Recombinant Rabbit Monoclonal Antibody

PAGE 4



Western blotting analysis using anti-Fibronectin 1 antibody (Cat#69510). Fibronectin 1 expression in wild type (WT) and fibronectin 1 shRNA knockdown (KD) HeLa cells with 30  $\mu$ g of total cell lysates. Hsp90  $\alpha$  serves as a loading control. The blot was incubated with anti-Fibronectin 1 antibody (Cat#69510, 1:5,000) and HRP-conjugated goat anti-rabbit secondary antibody (Cat#201, 1:20,000) respectively. Image was developed using FeQ™ ECL Substrate Kit (Cat#226).

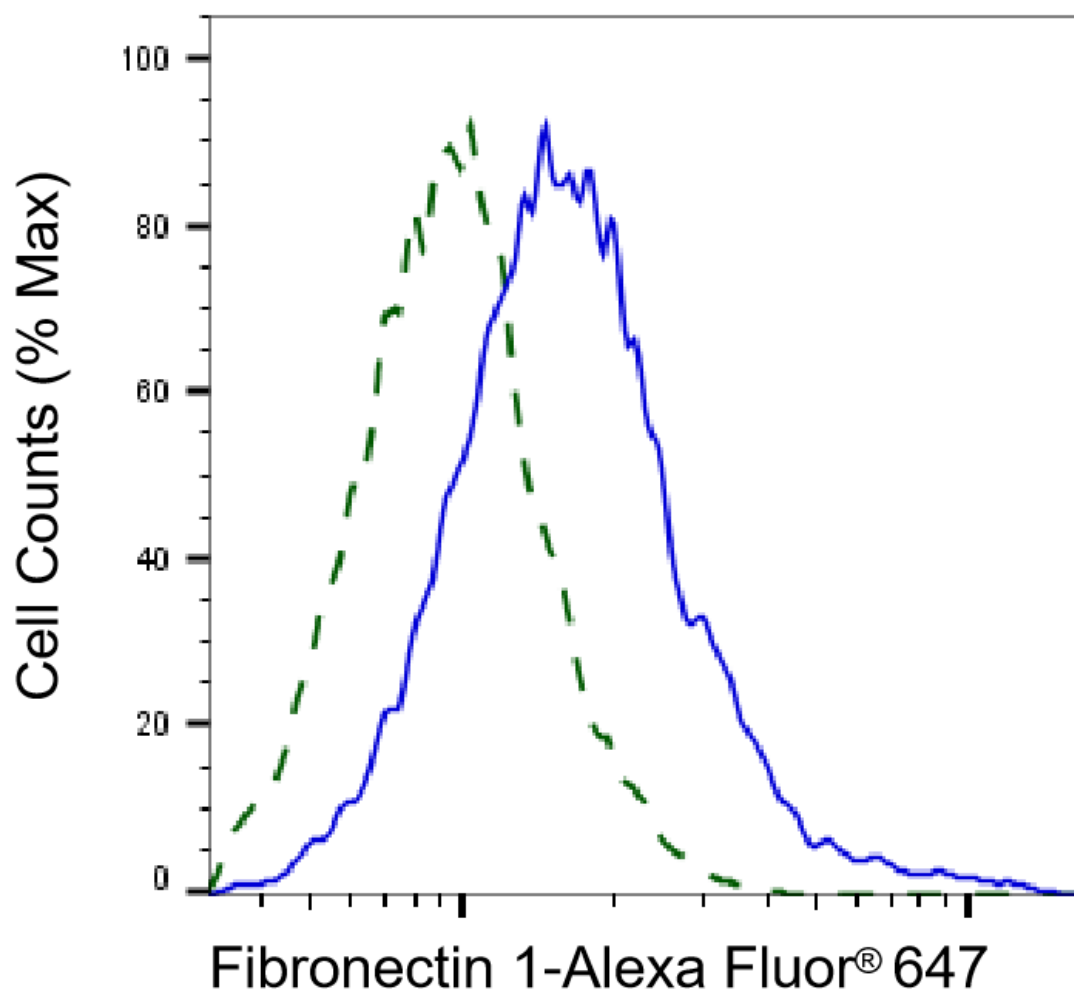
### SUPPORT

SUPPORT@GENUINBIOTECH.COM  
TEL: +1-540-855-7041

### ORDERS

SALES@GENUINBIOTECH.COM  
FAX: +1-540-855-7041

WWW.GENUINBIOTECH.COM



Copyright ©2025 Genuin Biotechnologies LLC

Validation of Fibronectin 1 knockdown using flow cytometry. Wild-type(WT, Blue) and knockdown(KD, Green) HeLa cells were stained with anti-Fibronectin 1 antibody (Cat#69510, 1:2,000) and analyzed using CytoFLEX.