

KD-Validated Anti-Cyclin D1 Recombinant Rabbit Monoclonal Antibody



Catalog #: 69541

Aliases

CCND1; Cyclin D1; U21B31; PRAD1; BCL1; B-Cell Lymphoma 1 Protein; G1/S-Specific Cyclin-D1; B-Cell CLL/Lymphoma 1; BCL-1 Oncogene; PRAD1 Oncogene; D11S287E; Cyclin D1 (PRAD1: Parathyroid Adenomatosis 1); Parathyroid Adenomatosis 1; G1/S-Specific Cyclin D1; BCL-1

Background

Gene Name: CCND1

NCBI Gene Entry: [595](#)

UniProt Entry: [P24385](#)

Application Information

Molecular Weight: Predicted, 34 kDa, observed, 34 kDa

Clonality: Rabbit monoclonal antibody

Clone ID: 23GB735

Species Reactivity: Human, mouse, rat

Applications Tested: Western blotting (WB), flow cytometry (FCM), immunocytochemistry (IC)

Immunogen

A synthesized peptide derived from human Cyclin D1

Isotype

Rabbit IgG

Storage Buffer

Supplied in PBS (pH 7.4) containing 50% glycerol, and 0.02% sodium azide.

Storage

Store at -20 °C for one year.

Recommended Dilutions

Western Blotting (WB): 1:2,000-1:10,000

Flow Cytometry (FCM): 1:2,000

Immunocytochemistry (IC): 1:100-1:1,000

SUPPORT

SUPPORT@GENUINBIOTECH.COM
TEL: +1-540-855-7041

ORDERS

SALES@GENUINBIOTECH.COM
FAX: +1-540-855-7041

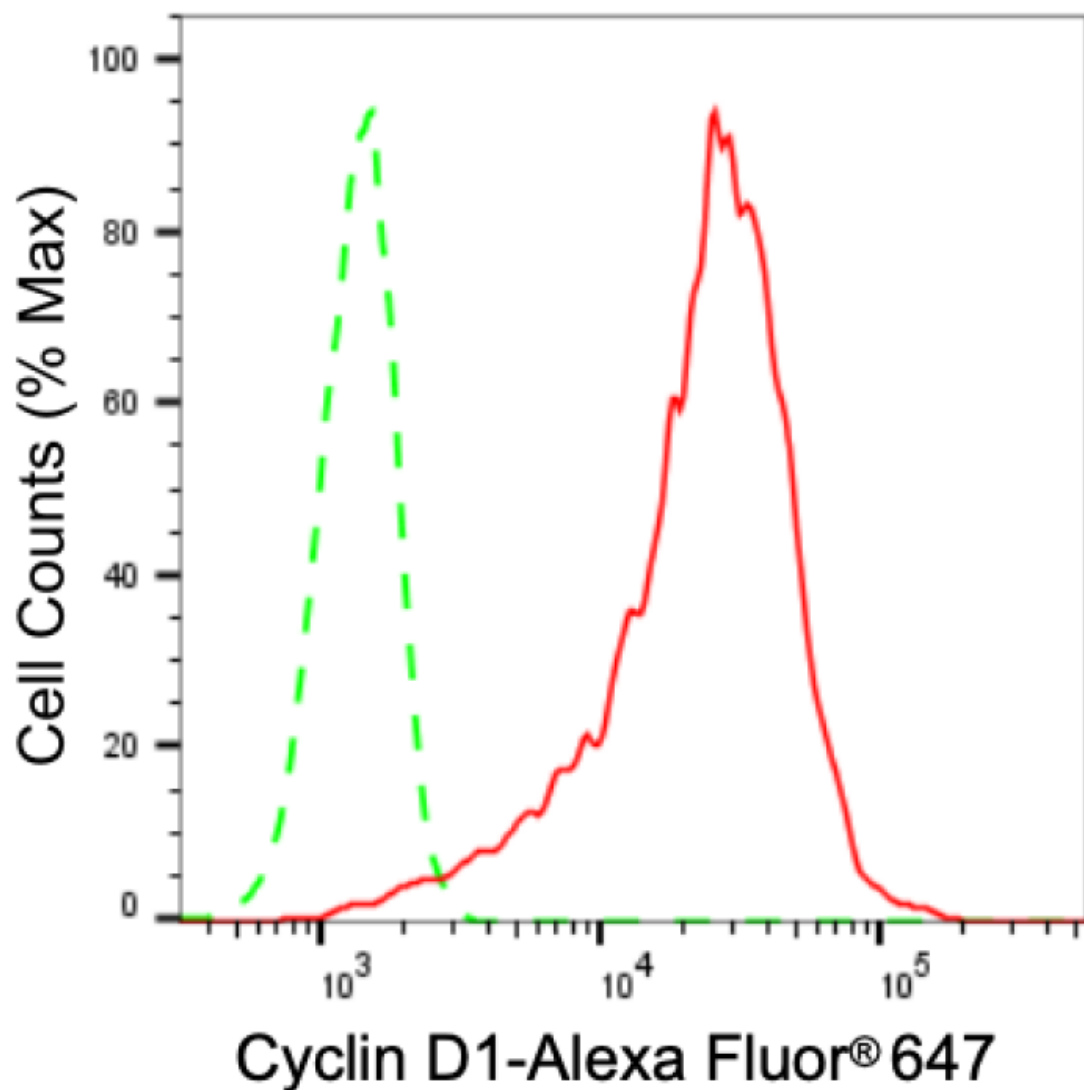
WWW.GENUINBIOTECH.COM

KD-Validated Anti-Cyclin D1 Recombinant Rabbit Monoclonal Antibody

PAGE 2

Note: This product is for research use only.

Validation Data



Copyright ©2024 Genuin Biotechnologies LLC

Flow cytometric analysis of Cyclin D1 expression in C2C12 cells using Cyclin D1 antibody (Cat#69541, 1:2,000). Green, isotype control; red, Cyclin D1.

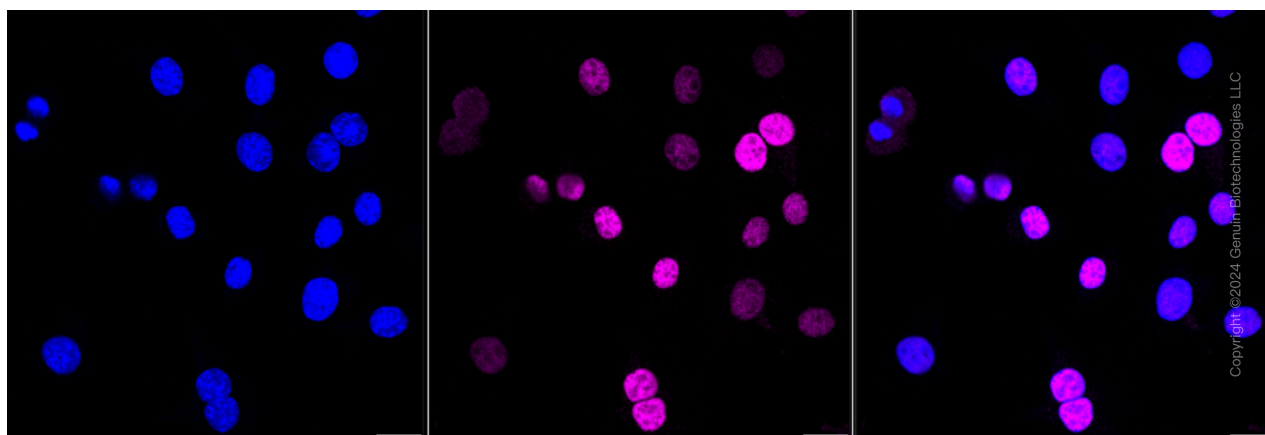
SUPPORT

SUPPORT@GENUINBIOTECH.COM
TEL: +1-540-855-7041

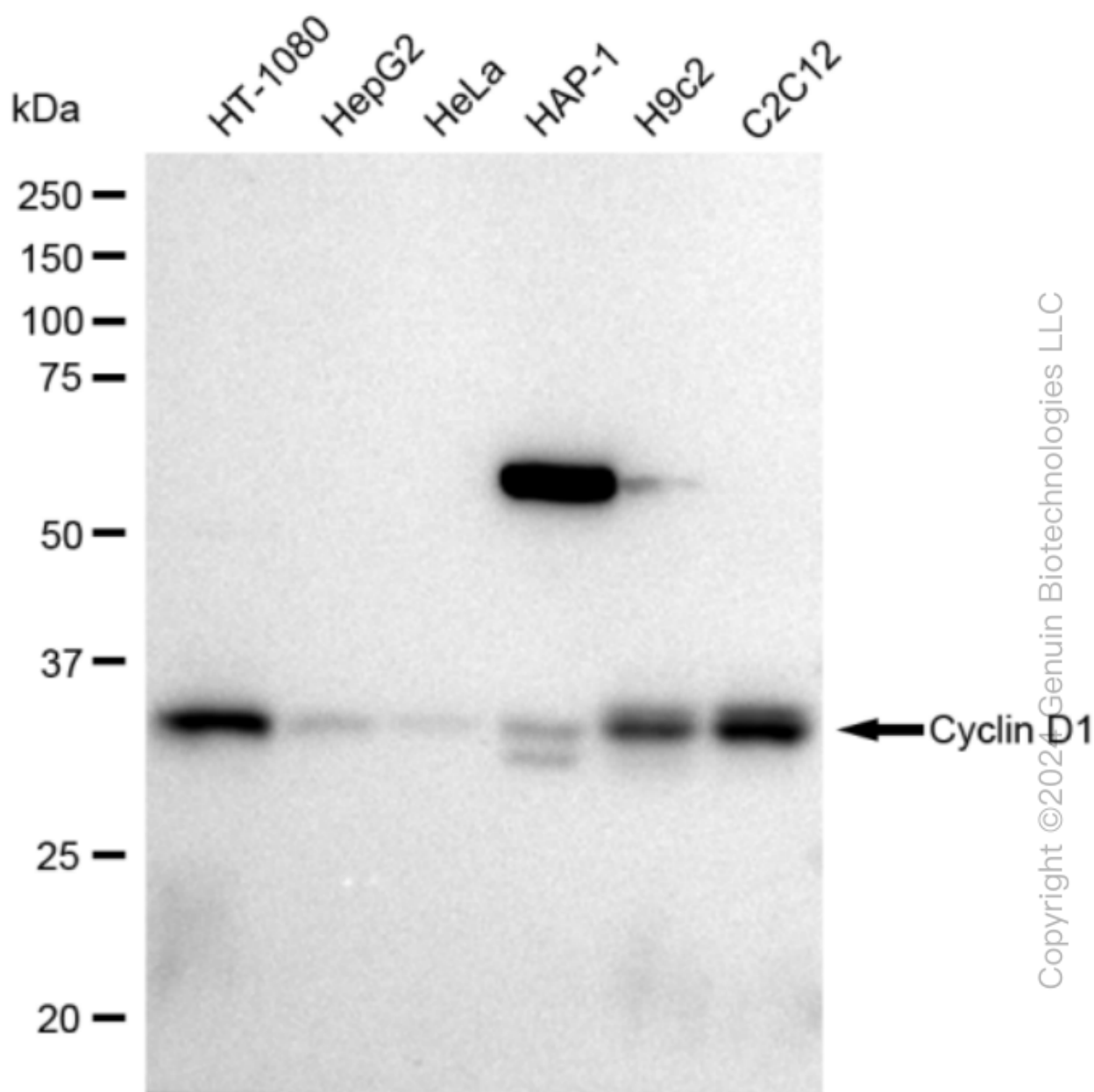
ORDERS

SALES@GENUINBIOTECH.COM
FAX: +1-540-855-7041

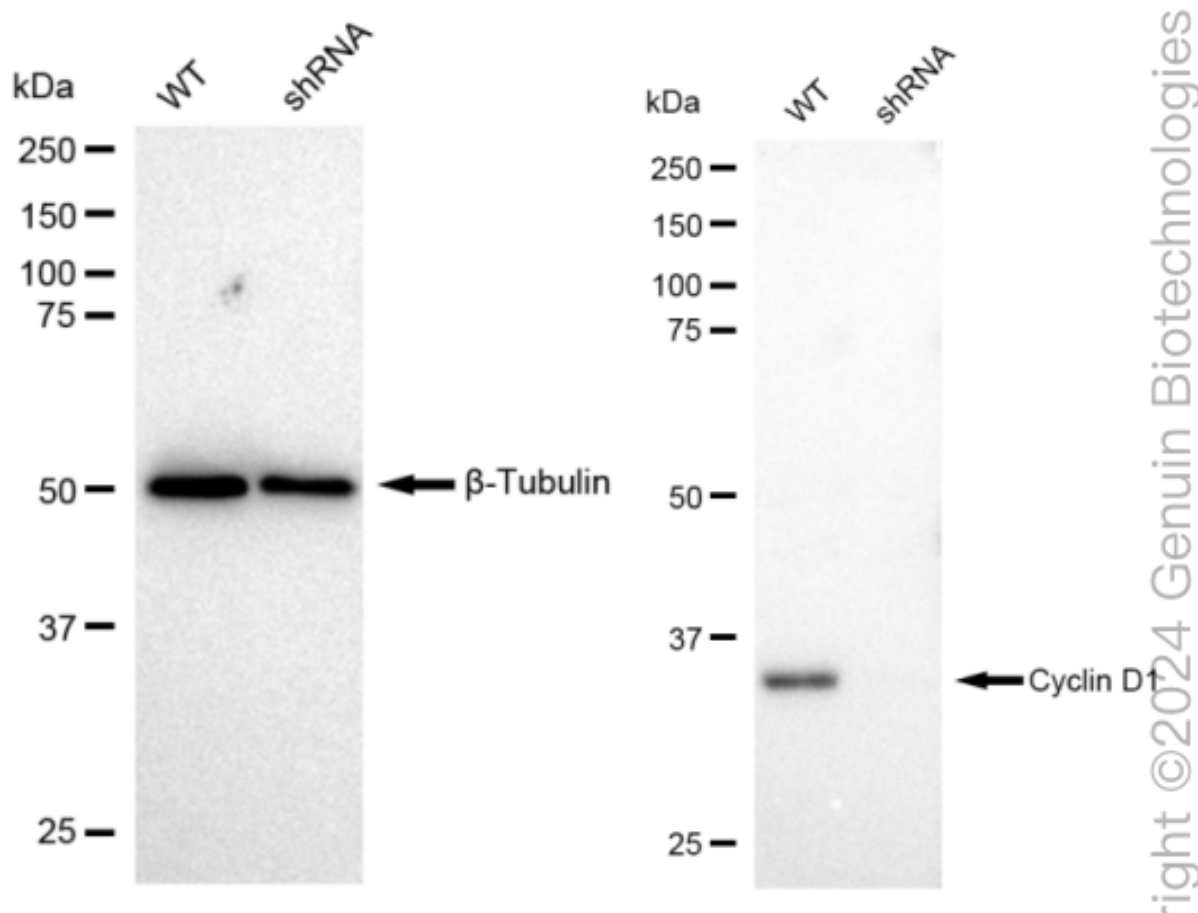
WWW.GENUINBIOTECH.COM



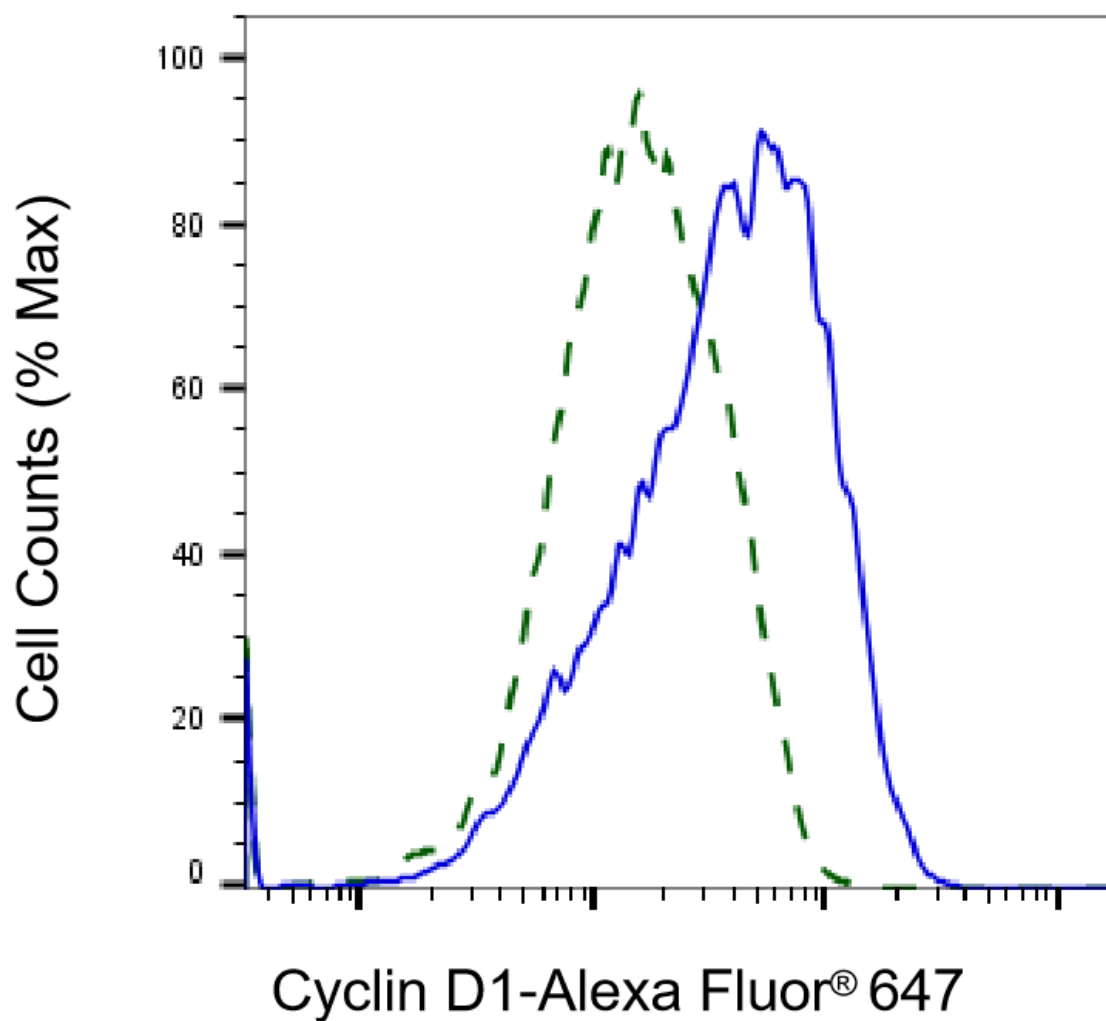
Immunocytochemical staining of C2C12 cells with Cyclin D1 antibody (Cat#69541, 1:1,000). Nuclei were stained blue with DAPI; Cyclin D1 was stained magenta with Alexa Fluor® 647. Images were taken using Leica stellaris 5. Protein abundance based on laser Intensity and smart gain: High. Scale bar: 20 μ m.



Western blotting analysis using anti-Cyclin D1 antibody (Cat#69541). Total cell lysates (30 µg) from various cell lines were loaded and separated by SDS-PAGE. The blot was incubated with anti-Cyclin D1 antibody (Cat#69541, 1:10,000) and HRP-conjugated goat anti rabbit secondary antibody (Cat#201, 1:50,000) respectively. Image was developed using FeQ™ ECL Substrate Kit (Cat#226).

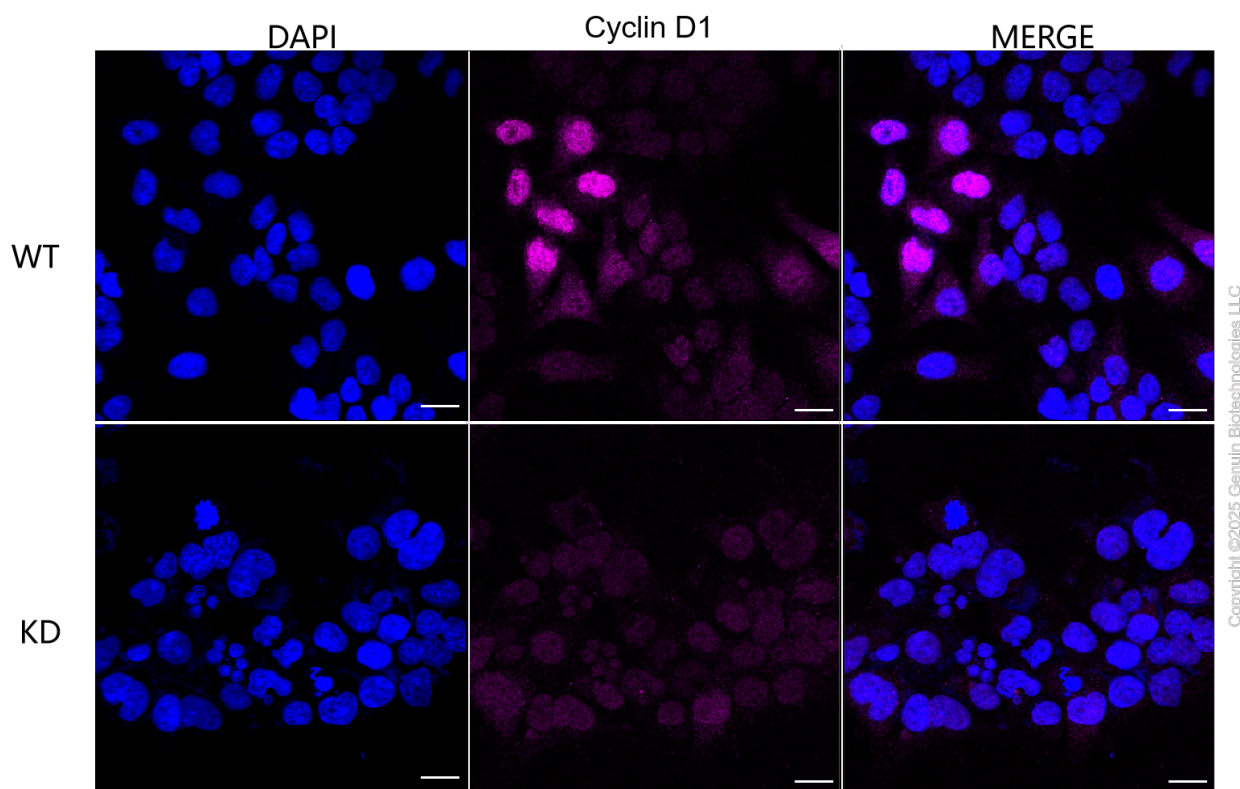


Western blotting analysis using anti-Cyclin D1 antibody (Cat#69541). Cyclin D1 expression in wild type (WT) and Cyclin D1 shRNA knockdown (KD) HeLa cells with 30 µg of total cell lysates. β-Tubulin serves as a loading control. The blot was incubated with anti-Cyclin D1 antibody (Cat#69541, 1:10,000) and HRP-conjugated goat anti rabbit secondary antibody (Cat#201, 1:50,000) respectively. Image was developed using FeQ™ ECL Substrate Kit (Cat#226).



Copyright ©2025 Genuin Biotechnologies LLC

Validation of Cyclin D1 knockdown using flow cytometry. Wild-type(WT, Blue) and knockdown(KD, Green) HeLa cells were stained with anti-Cyclin D1 antibody (Cat#69541, 1:2,000) and analyzed using BD flow cytometer.



Immunocytochemical staining of HeLa cells using anti-Cyclin D1 antibody (Cat#69541, 1:1,000), Top panel: wild-type (WT); Bottom panel: Cyclin D1 shRNA knockdown (KD). Nuclei were stained blue with DAPI; Cyclin D1 was stained magenta with Alexa Fluor® 647. Scale bar, 20 μ m. Permeabilization: Triton.