

KD-Validated Anti-CRKII Recombinant Rabbit Monoclonal Antibody



Catalog #: 69640

Aliases

CRK; CRK Proto-Oncogene, Adaptor Protein; V-Crk Avian Sarcoma Virus CT10 Oncogene Homolog; Adapter Molecule Crk; Proto-Oncogene C-Crk; P38; V-Crk Sarcoma Virus CT10 Oncogene-Like Protein; CRKII

Background

Gene Name: CRK

NCBI Gene Entry: [1398](#)

UniProt Entry: [P46108](#)

Application Information

Molecular Weight: Predicted, 34 kDa, observed, 35 kDa

Clonality: Rabbit monoclonal antibody

Clone ID: 23GB1405

Species Reactivity: Human, mouse, rat

Applications Tested: Western blotting (WB), flow cytometry (FCM), immunocytochemistry (IC)

Immunogen

A synthesized peptide derived from human CRKII

Isotype

Rabbit IgG

Storage Buffer

Supplied in PBS (pH 7.4) containing 50% glycerol, and 0.02% sodium azide.

Storage

Store at -20 °C for one year.

Recommended Dilutions

Western Blotting (WB): 1:1,000-1:5,000

Flow Cytometry (FCM): 1:2,000

Immunocytochemistry (IC): 1:100-1:1,000

Note: This product is for research use only.

SUPPORT

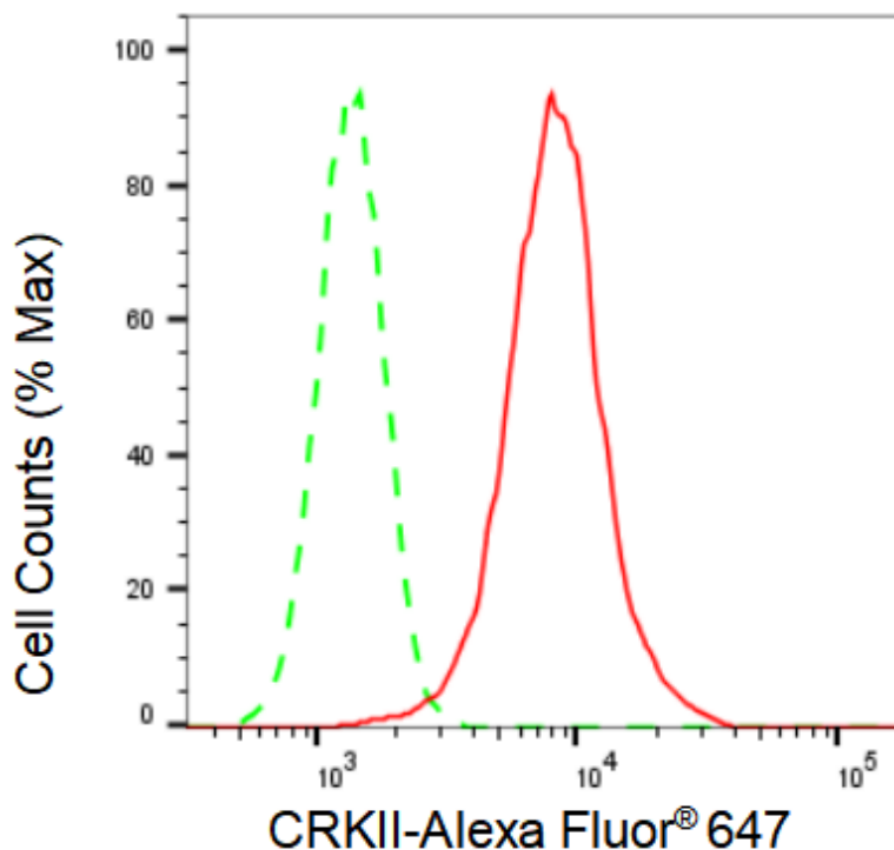
SUPPORT@GENUINBIOTECH.COM
TEL: +1-540-855-7041

ORDERS

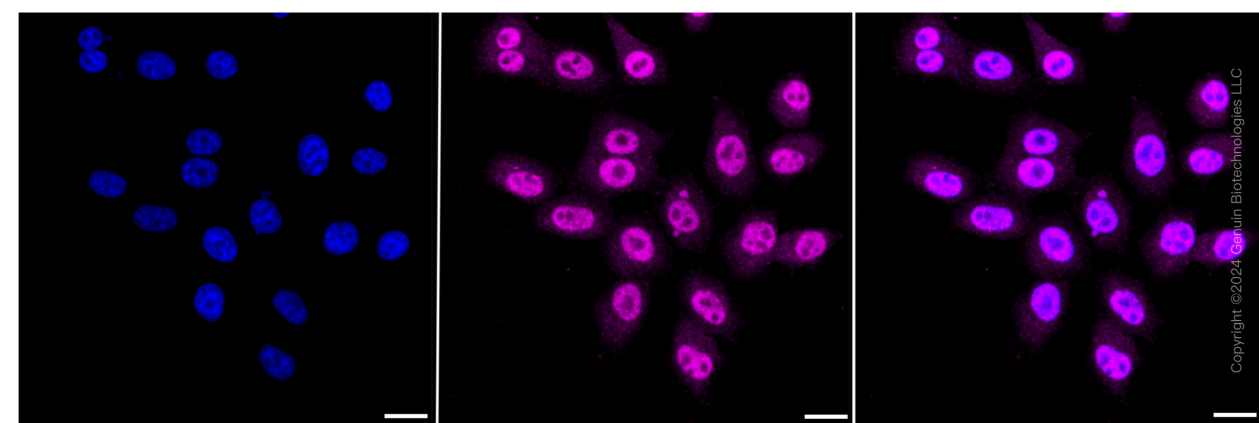
SALES@GENUINBIOTECH.COM
FAX: +1-540-855-7041

WWW.GENUINBIOTECH.COM

Validation Data



Copyright ©2024 Genuin Biotechnologies LLC



Copyright ©2024 Genuin Biotechnologies LLC

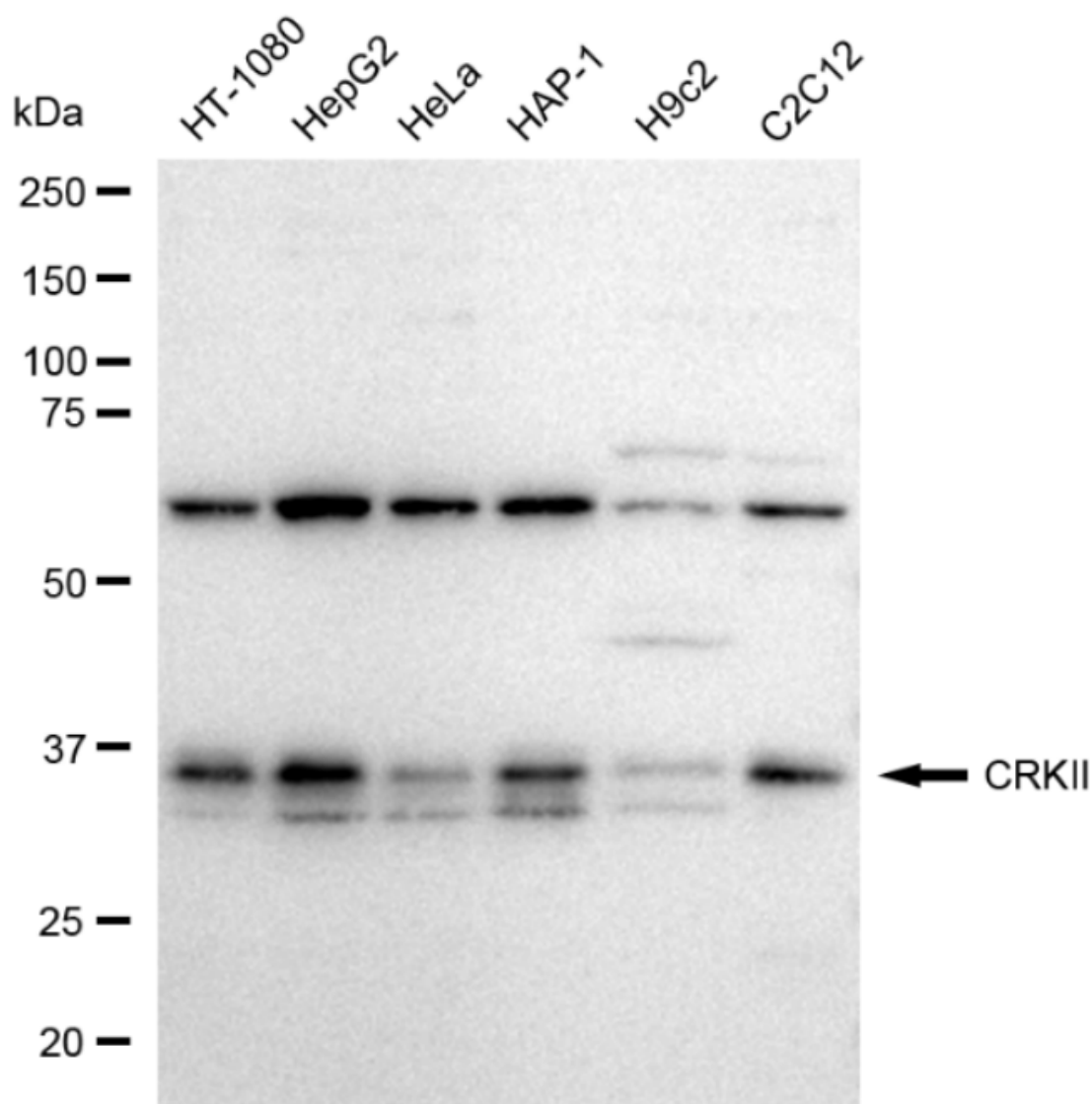
SUPPORT

SUPPORT@GENUINBIOTECH.COM
TEL: +1-540-855-7041

ORDERS

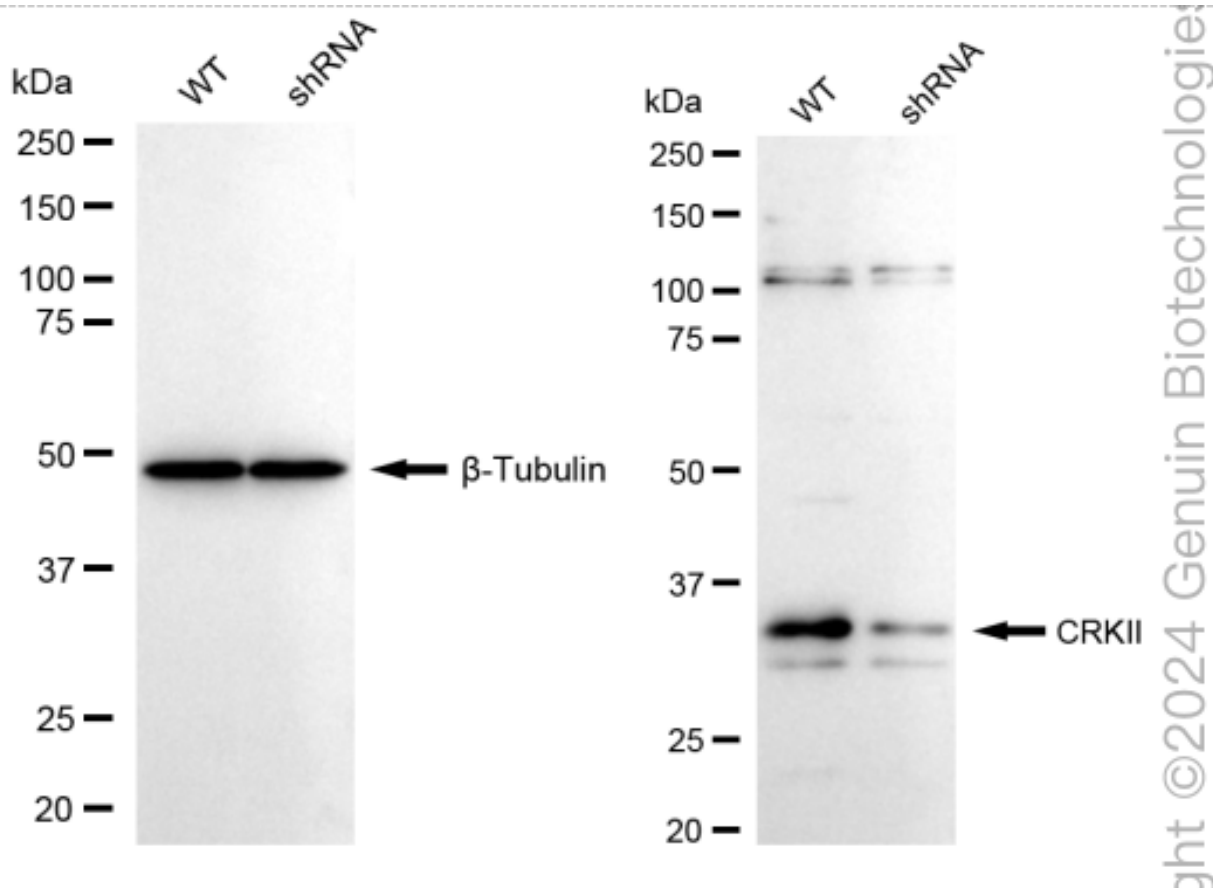
SALES@GENUINBIOTECH.COM
FAX: +1-540-855-7041

WWW.GENUINBIOTECH.COM



Copyright ©2024 Genuin Biotechnologies LLC

Western blotting analysis using anti-CRKII antibody (Cat#69640). Total cell lysates (30 μ g) from various cell lines were loaded and separated by SDS-PAGE. The blot was incubated with anti-CRKII antibody (Cat#69640, 1:5,000) and HRP-conjugated goat anti-rabbit secondary antibody (Cat#201, 1:20,000) respectively. Image was developed using FeQ™ ECL Substrate Kit (Cat#226).



Western blotting analysis using anti-CRKII antibody (Cat#69640). CRKII expression in wild type (WT) and CRKII shRNA knockdown (KD) HeLa cells with 30 µg of total cell lysates. β-Tubulin serves as a loading control. The blot was incubated with anti-CRKII antibody (Cat#69640, 1:5,000) and HRP-conjugated goat anti-rabbit secondary antibody (Cat#201, 1:20,000) respectively. Image was developed using FeQ™ ECL Substrate Kit (Cat#226).