

KD-Validated Anti-cAMP Protein Kinase Catalytic Subunit Rabbit Monoclonal Antibody



Catalog #: 69641

Aliases

Protein Kinase; CAMP-Dependent; Catalytic; Alpha; CAMP-Dependent Protein Kinase Catalytic Subunit Alpha; PKACA; Protein Kinase A Catalytic Subunit; PKA C-Alpha; EC 2.7.11; EC 2.7.11.11

Background

Gene Name: PRKACA

NCBI Gene Entry: [5566](#)

UniProt Entry: [P17612](#)

Application Information

Molecular Weight: Predicted, 41 kDa, observed, 41 kDa

Clonality: Rabbit monoclonal antibody

Clone ID: 23GB1030

Species Reactivity: Human, mouse, rat

Applications Tested: Western blotting (WB), flow cytometry (FCM), immunocytochemistry (IC)

Immunogen

A synthesized peptide derived from human cAMP Protein Kinase Catalytic subunit

Isotype

Rabbit IgG

Storage Buffer

Supplied in PBS (pH 7.4) containing 50% glycerol, and 0.02% sodium azide.

Storage

Store at -20 °C for one year.

Recommended Dilutions

Western Blotting (WB): 1:1,000-1:5,000

Flow Cytometry (FCM): 1:2,000

Immunocytochemistry (IC): 1:100-1:1,000

Note: This product is for research use only.

SUPPORT

SUPPORT@GENUINBIOTECH.COM
TEL: +1-540-855-7041

ORDERS

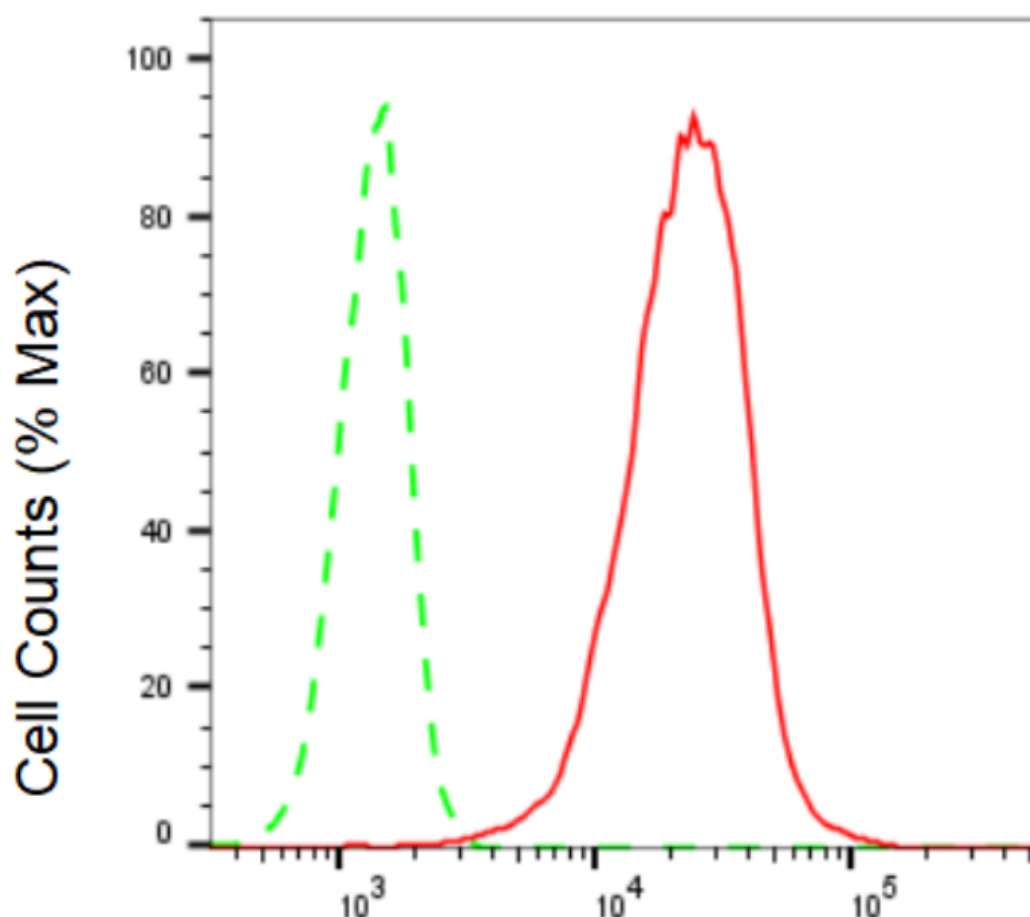
SALES@GENUINBIOTECH.COM
FAX: +1-540-855-7041

WWW.GENUINBIOTECH.COM

KD-Validated Anti-cAMP Protein Kinase Catalytic Subunit Rabbit Monoclonal Antibody

PAGE 2

Validation Data



Copyright ©2024 Genuin Biotechnologies LLC

cAMP Protein Kinase Catalytic Subunit-Alexa Fluor® 647

Flow cytometric analysis of cAMP Protein Kinase Catalytic Subunit expression in C2C12 cells using cAMP Protein Kinase Catalytic Subunit antibody (Cat#69641, 1:2,000). Green, isotype control; red, cAMP Protein Kinase Catalytic Subunit.

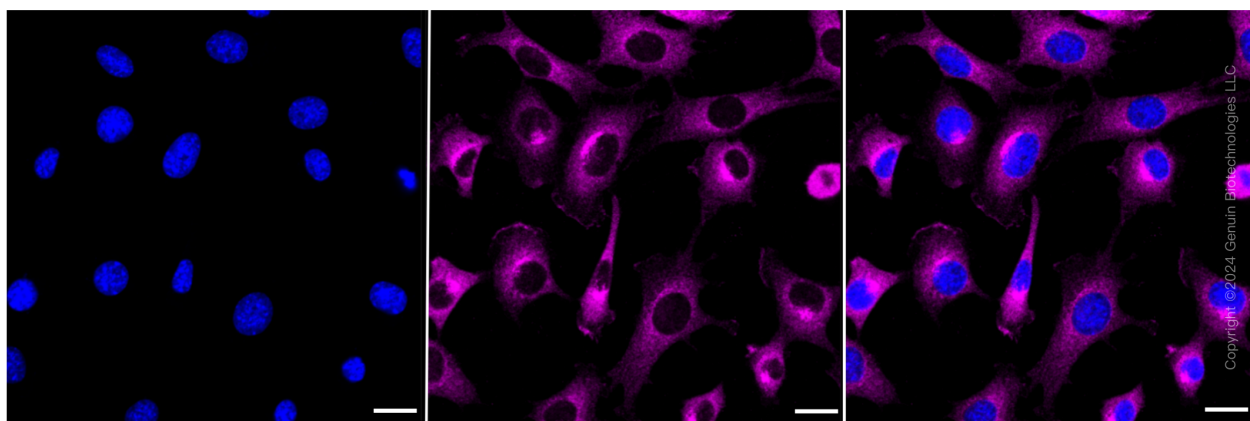
SUPPORT

SUPPORT@GENUINBIOTECH.COM
TEL: +1-540-855-7041

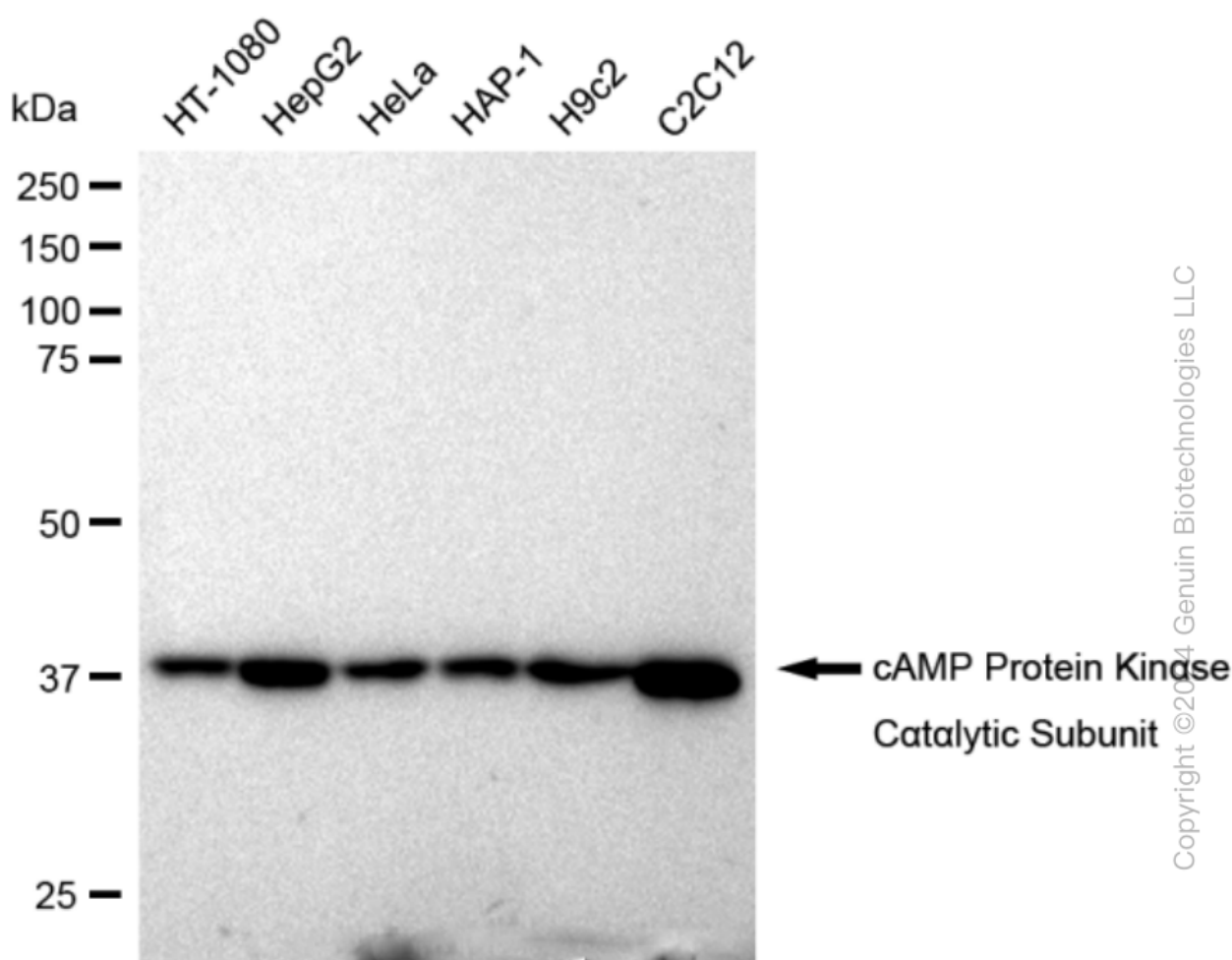
ORDERS

SALES@GENUINBIOTECH.COM
FAX: +1-540-855-7041

WWW.GENUINBIOTECH.COM



Immunocytochemical staining of HeLa cells with cAMP Protein Kinase Catalytic Subunit antibody (Cat#69641, 1:1,000). Nuclei were stained blue with DAPI; cAMP Protein Kinase Catalytic Subunit was stained magenta with Alexa Fluor® 647. Images were taken using Leica stellaris 5. Protein abundance based on laser Intensity and smart gain: High. Scale bar: 20 μ m.

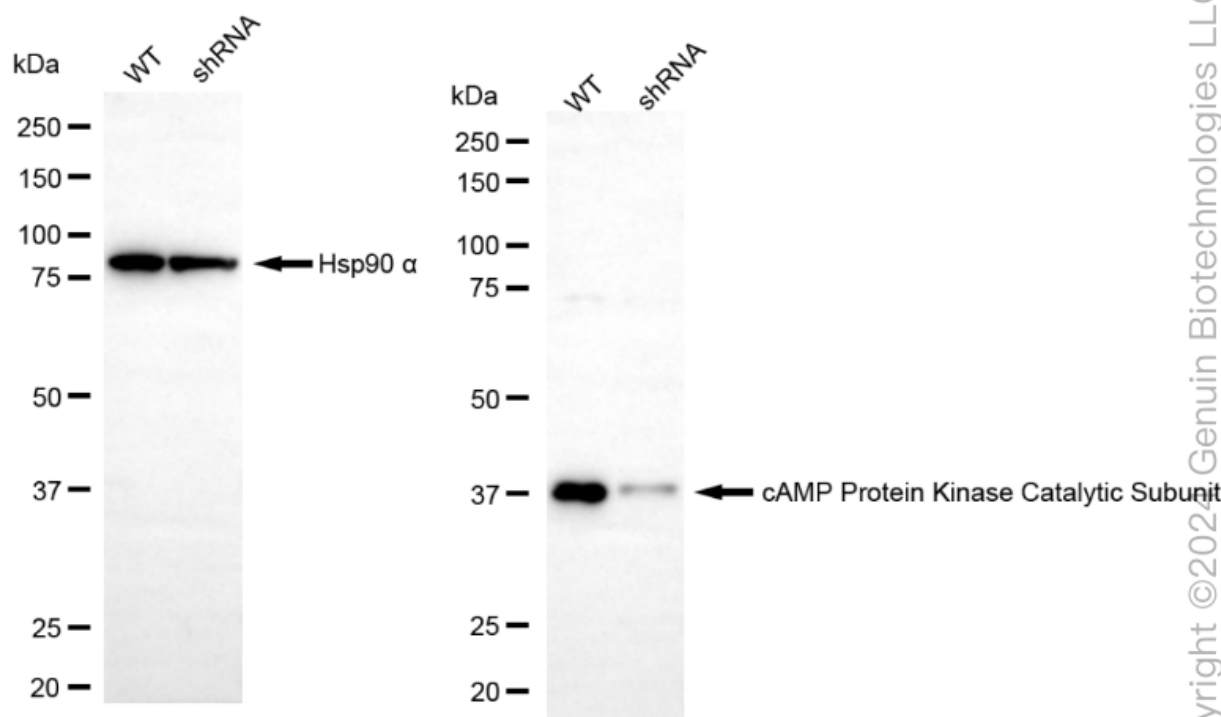


Western blotting analysis using anti-cAMP Protein Kinase Catalytic Subunit antibody (Cat#69641). Total cell lysates (30 μ g) from various cell lines were loaded and separated by SDS-

KD-Validated Anti-cAMP Protein Kinase Catalytic Subunit Rabbit Monoclonal Antibody

PAGE 4

PAGE. The blot was incubated with anti-cAMP Protein Kinase Catalytic Subunit antibody (Cat#69641, 1:5,000) and HRP-conjugated goat anti-rabbit secondary antibody (Cat#201, 1:50,000) respectively. Image was developed using FeQ™ ECL Substrate Kit (Cat#226).



Western blotting analysis using anti-cAMP Protein Kinase Catalytic Subunit antibody (Cat#69641). cAMP Protein Kinase Catalytic Subunit expression in wild type (WT) and cAMP Protein Kinase Catalytic Subunit shRNA knockdown (KD) HT-1080 cells with 30 µg of total cell lysates. β-Tubulin serves as a loading control. The blot was incubated with anti-cAMP Protein Kinase Catalytic Subunit antibody (Cat#69641, 1:5,000) and HRP-conjugated goat anti-rabbit secondary antibody (Cat#201, 1:20,000) respectively. Image was developed using FeQ™ ECL Substrate Kit (Cat#226).

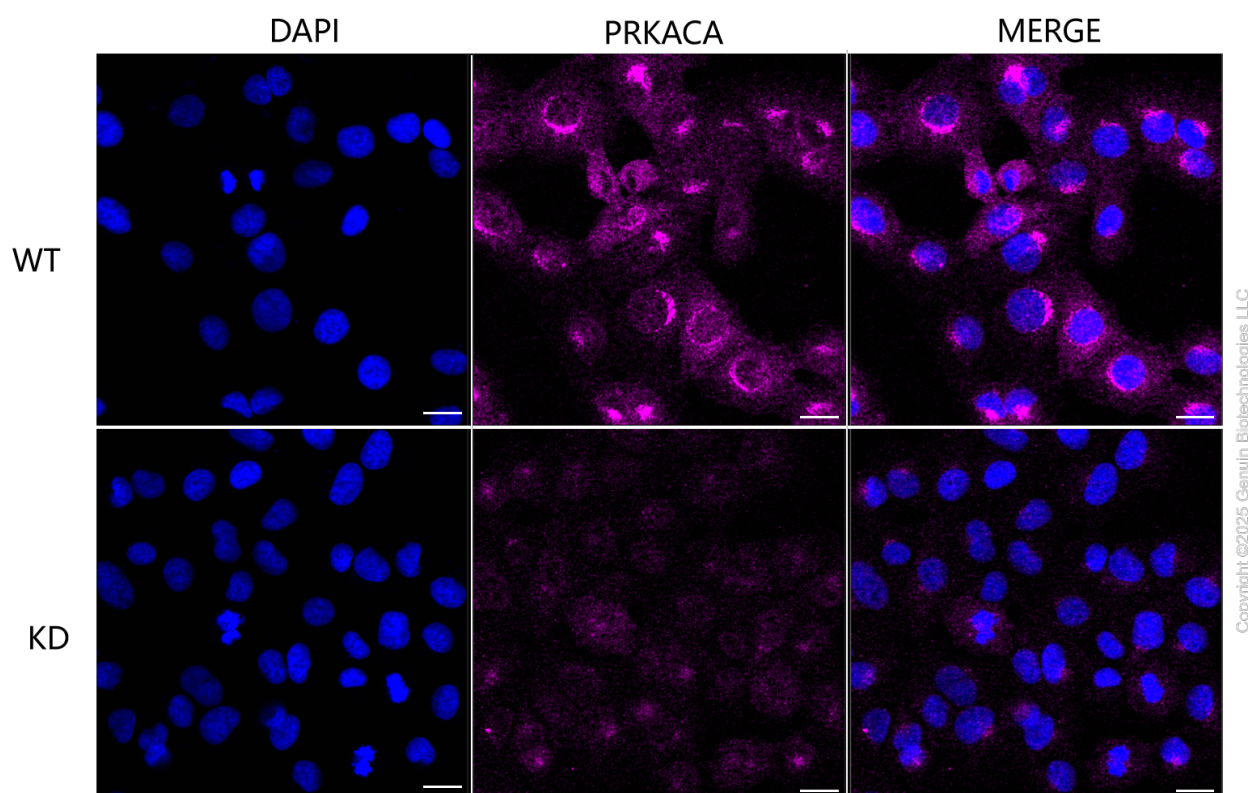
SUPPORT

SUPPORT@GENUINBIOTECH.COM
TEL: +1-540-855-7041

ORDERS

SALES@GENUINBIOTECH.COM
FAX: +1-540-855-7041

WWW.GENUINBIOTECH.COM



Immunocytochemical staining of HT-1080 cells using anti-PRKACA antibody (Cat#69641, 1:1,000), Top panel: wild-type (WT); Bottom panel: PRKACA shRNA knockdown (KD). Nuclei were stained blue with DAPI; PRKACA was stained magenta with Alexa Fluor® 647. Scale bar, 20 μ m.