

# KD-Validated Anti-HIF 1 $\beta$ Recombinant Rabbit Monoclonal Antibody



**Catalog #: 69657**

## Aliases

ARNT; Aryl Hydrocarbon Receptor Nuclear Translocator ; BHLHe2; HIF-1beta; Class E Basic Helix-Loop-Helix Protein 2; Hypoxia Inducible Factor 1; Subunit Beta; Dioxin Receptor, Nuclear Translocator; HIF-1-Beta; HIF1-Beta; ARNT1; Hypoxia-Inducible Factor 1, Beta Subunit; Hypoxia-Inducible Factor 1-Beta; ARNT Protein; HIF1BETA; BHLHE2; HIF1B; TANGO

## Background

Gene Name: ARNT

NCBI Gene Entry: [405](#)

UniProt Entry: [P27540](#)

## Application Information

Molecular Weight: Predicted, 87 kDa, observed, 87 kDa

Clonality: Rabbit monoclonal antibody

Clone ID: 23GB660

Species Reactivity: Human

Applications Tested: Western blotting (WB), flow cytometry (FCM), immunocytochemistry (IC)

## Immunogen

A synthesized peptide derived from human HIF-1 beta

## Isotype

Rabbit IgG

## Storage Buffer

Supplied in PBS (pH 7.4) containing 50% glycerol, and 0.02% sodium azide.

## Storage

Store at -20 °C for one year.

## Recommended Dilutions

Western Blotting (WB): 1:1,000-1:5,000

Flow Cytometry (FCM): 1:2,000

Immunocytochemistry (IC): 1:100-1:1,000

---

### SUPPORT

SUPPORT@GENUINBIOTECH.COM  
TEL: +1-540-855-7041

### ORDERS

SALES@GENUINBIOTECH.COM  
FAX: +1-540-855-7041

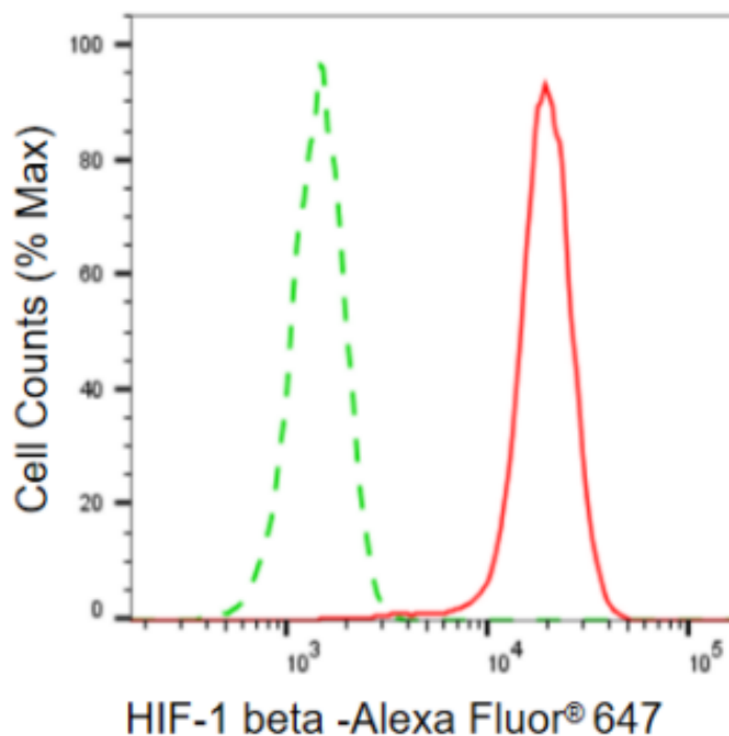
[WWW.GENUINBIOTECH.COM](http://WWW.GENUINBIOTECH.COM)

# KD-Validated Anti-HIF 1 $\beta$ Recombinant Rabbit Monoclonal Antibody

PAGE 2

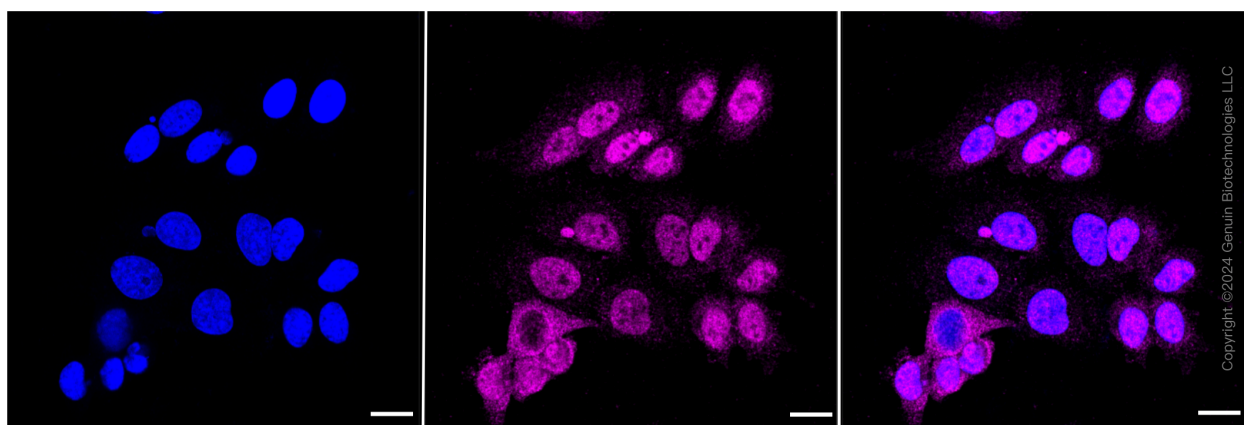
**Note:** This product is for research use only.

## Validation Data



Copyright ©2024 Genuin Biotechnologies LLC

Flow cytometric analysis of HIF-1 beta expression in HepG2 cells using anti-HIF-1 beta antibody (Cat#69657, 1:2,000). Green, isotype control; red, HIF-1 beta.



Copyright ©2024 Genuin Biotechnologies LLC

Immunocytochemical staining of HepG2 cells with HIF-1 beta antibody (Cat#69657, 1:1,000). Nuclei were stained blue with DAPI; HIF-1 beta was stained magenta with Alexa Fluor® 647. Images were taken using Leica stellaris 5. Protein abundance based on laser Intensity and smart gain: Medium. Scale bar: 20  $\mu$ m.

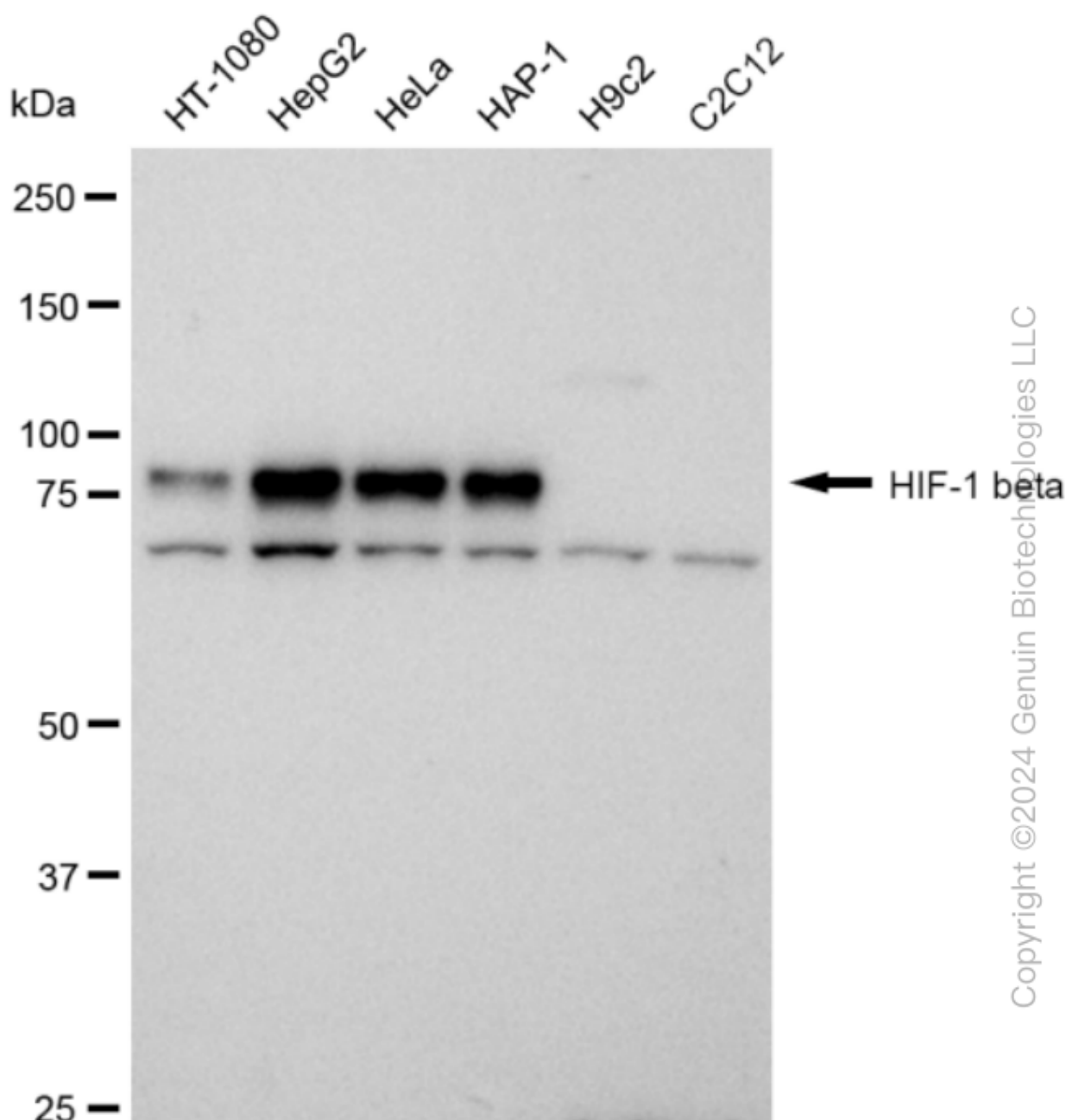
### SUPPORT

SUPPORT@GENUINBIOTECH.COM  
TEL: +1-540-855-7041

### ORDERS

SALES@GENUINBIOTECH.COM  
FAX: +1-540-855-7041

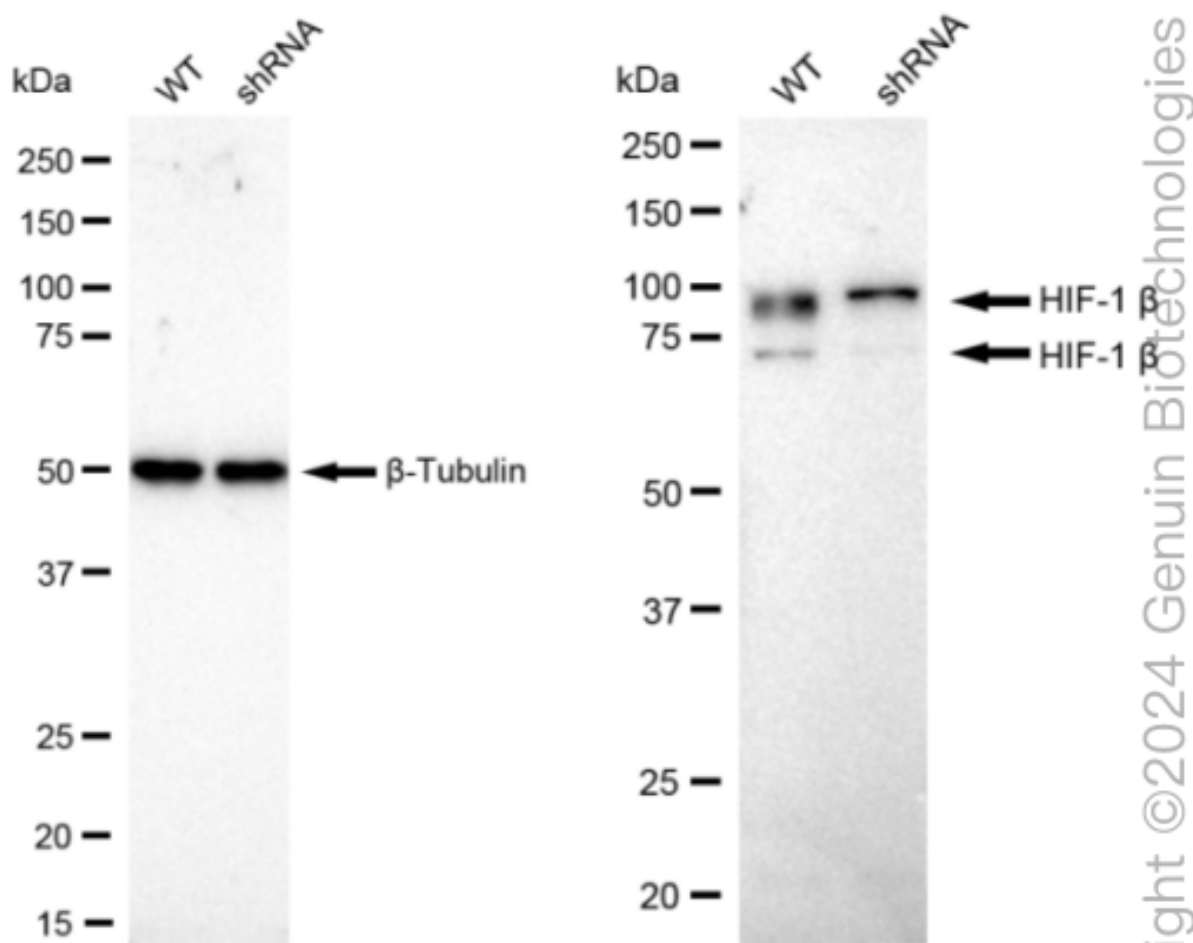
[WWW.GENUINBIOTECH.COM](http://WWW.GENUINBIOTECH.COM)



Western blotting analysis using anti-HIF 1  $\beta$  antibody (Cat#69657). Total cell lysates (30  $\mu$ g) from various cell lines were loaded and separated by SDS-PAGE. The blot was incubated with anti-HIF 1  $\beta$  antibody (Cat#69657,1:5,000) and HRP-conjugated goat anti rabbit secondary antibody (Cat#201,1:50,000) respectively. Image was developed using FeQ™ ECL Substrate Kit (Cat#226).

## KD-Validated Anti-HIF 1 $\beta$ Recombinant Rabbit Monoclonal Antibody

PAGE 4



Western blotting analysis using anti-HIF-1 beta antibody (Cat#69657). HIF-1 beta expression in wild type (WT) and HIF-1 beta shRNA knockdown (KD) HT-1080 cells with 30  $\mu$ g of total cell lysates.  $\beta$ -Tubulin serves as a loading control. The blot was incubated with anti-HIF-1 beta antibody (Cat#69657, 1:5,000) and HRP-conjugated goat anti rabbit secondary antibody (Cat#201, 1:20,000) respectively. Image was developed using FeQ™ ECL Substrate Kit (Cat#226).

### SUPPORT

SUPPORT@GENUINBIOTECH.COM  
TEL: +1-540-855-7041

### ORDERS

SALES@GENUINBIOTECH.COM  
FAX: +1-540-855-7041

WWW.GENUINBIOTECH.COM