

# KD-Validated Anti-Amyloid beta precursor protein Recombinant Rabbit Monoclonal



**Catalog #: 69660**

## Aliases

A4; AAA; ABETA; ABPP; AD1; AICD-50; AICD-57; AICD-59; AID(50); AID(57); AID(59); amyloid beta (A4) precursor protein; Amyloid beta A4 protein; CTFgamma ; PN 2;CD31; CVAP; APP

## Background

Gene Name: APP

NCBI Gene Entry: [351](#)

UniProt Entry: [P05067](#)

## Application Information

Molecular Weight: Predicted, 87 kDa, observed, 110 kDa

Clonality: Rabbit monoclonal antibody

Clone ID: 23GB1535

Species Reactivity: Human, mouse, rat

Applications Tested: Western blotting (WB), flow cytometry (FCM), immunocytochemistry (IC)

## Immunogen

A synthesized peptide derived from human Amyloid beta A4

## Isotype

Rabbit IgG

## Storage Buffer

Supplied in PBS (pH 7.4) containing 50% glycerol, and 0.02% sodium azide.

## Storage

Store at -20 °C for one year.

## Recommended Dilutions

Western Blotting (WB): 1:1,000-1:5,000

Flow Cytometry (FCM): 1:2,000

Immunocytochemistry (IC): 1:100-1:1,000

**Note:** This product is for research use only.

---

### SUPPORT

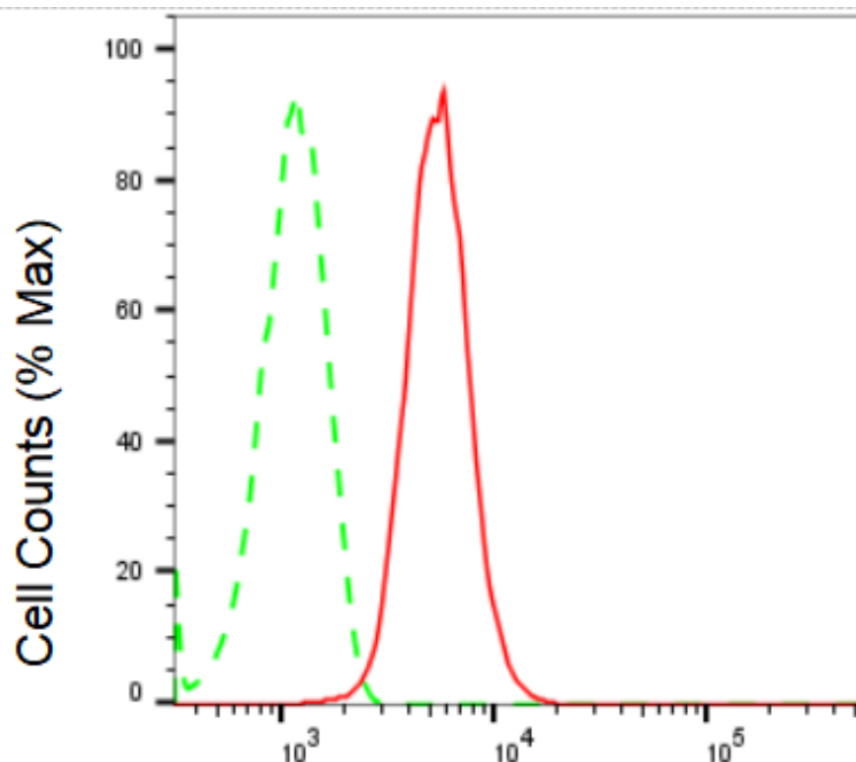
SUPPORT@GENUINBIOTECH.COM  
TEL: +1-540-855-7041

### ORDERS

SALES@GENUINBIOTECH.COM  
FAX: +1-540-855-7041

[WWW.GENUINBIOTECH.COM](http://WWW.GENUINBIOTECH.COM)

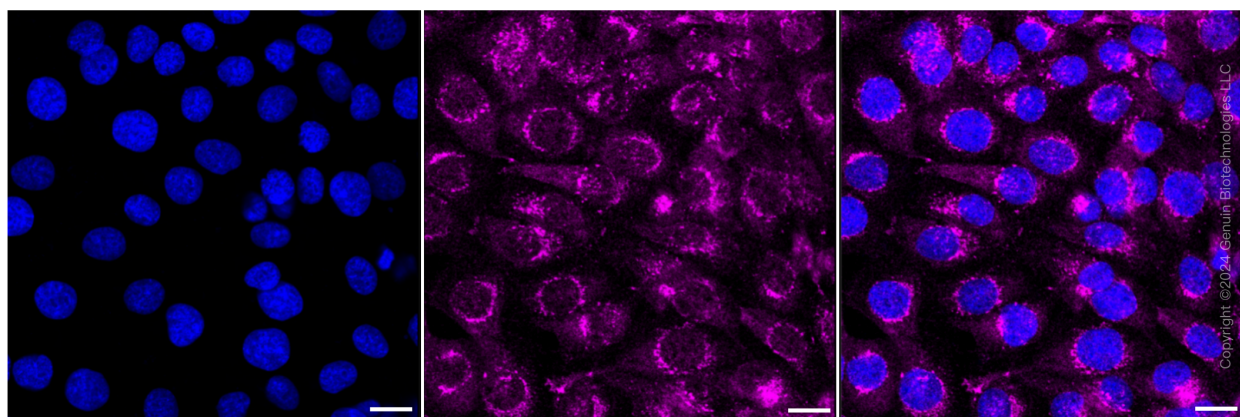
**Validation Data**



Copyright ©2024 Genuin Biotechnologies LLC

**Amyloid beta precursor protein-Alexa Fluor® 647**

Flow cytometric analysis of Amyloid beta precursor protein expression in HepG2 cells using Amyloid beta precursor protein antibody (Cat#69660, 1:2,000). Green, isotype control; red, Amyloid beta precursor protein.



Copyright ©2024 Genuin Biotechnologies LLC

Immunocytochemical staining of HT-1080 cells with Amyloid beta precursor protein antibody (Cat#69660, 1:1,000). Nuclei were stained blue with DAPI; Amyloid beta precursor protein was stained magenta with Alexa Fluor® 647. Images were taken using Leica stellaris 5. Protein abundance based on laser Intensity and smart gain: Medium. Scale bar: 20  $\mu$ m.

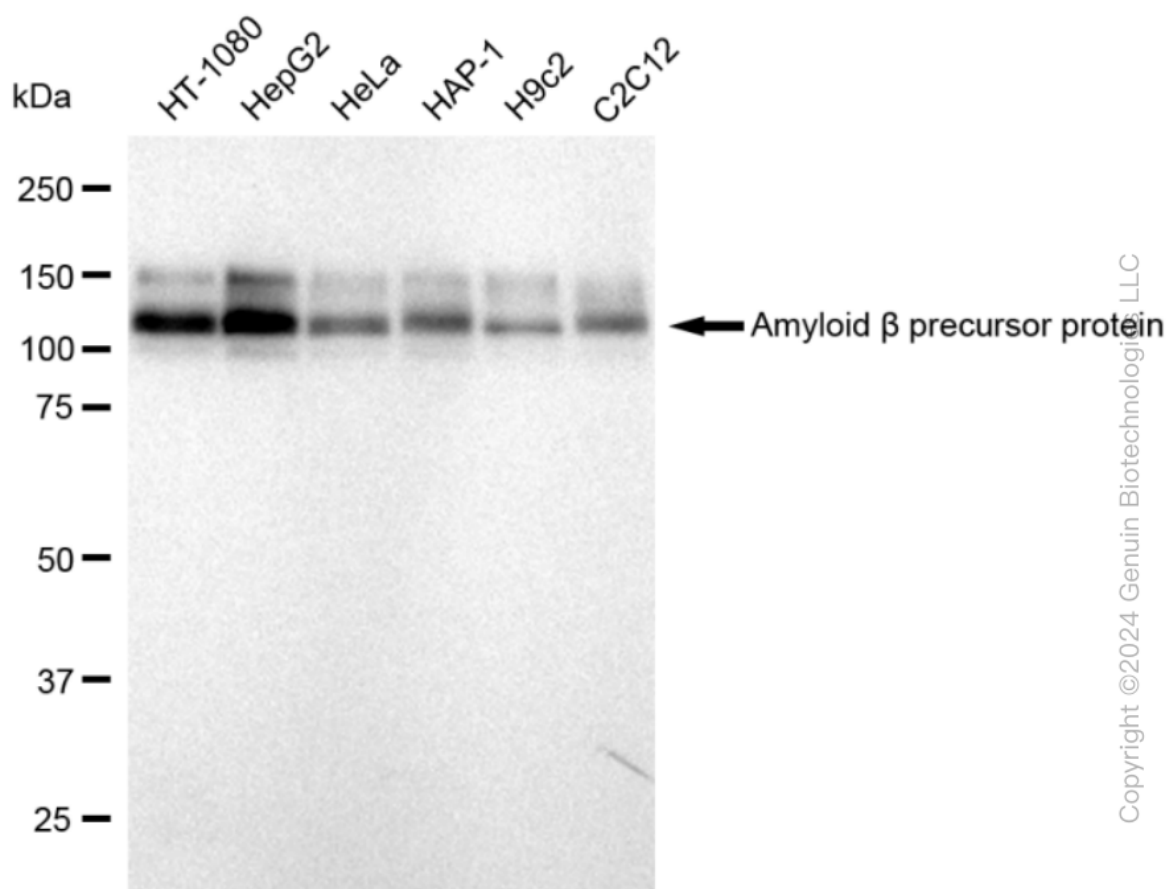
**SUPPORT**

SUPPORT@GENUINBIOTECH.COM  
TEL: +1-540-855-7041

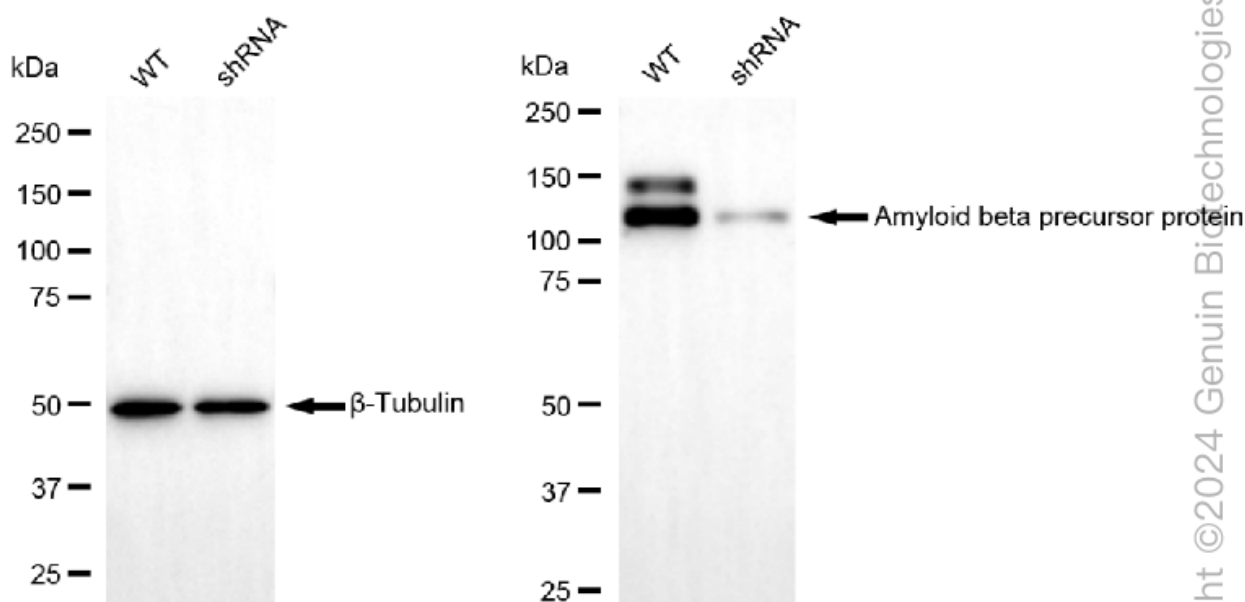
**ORDERS**

SALES@GENUINBIOTECH.COM  
FAX: +1-540-855-7041

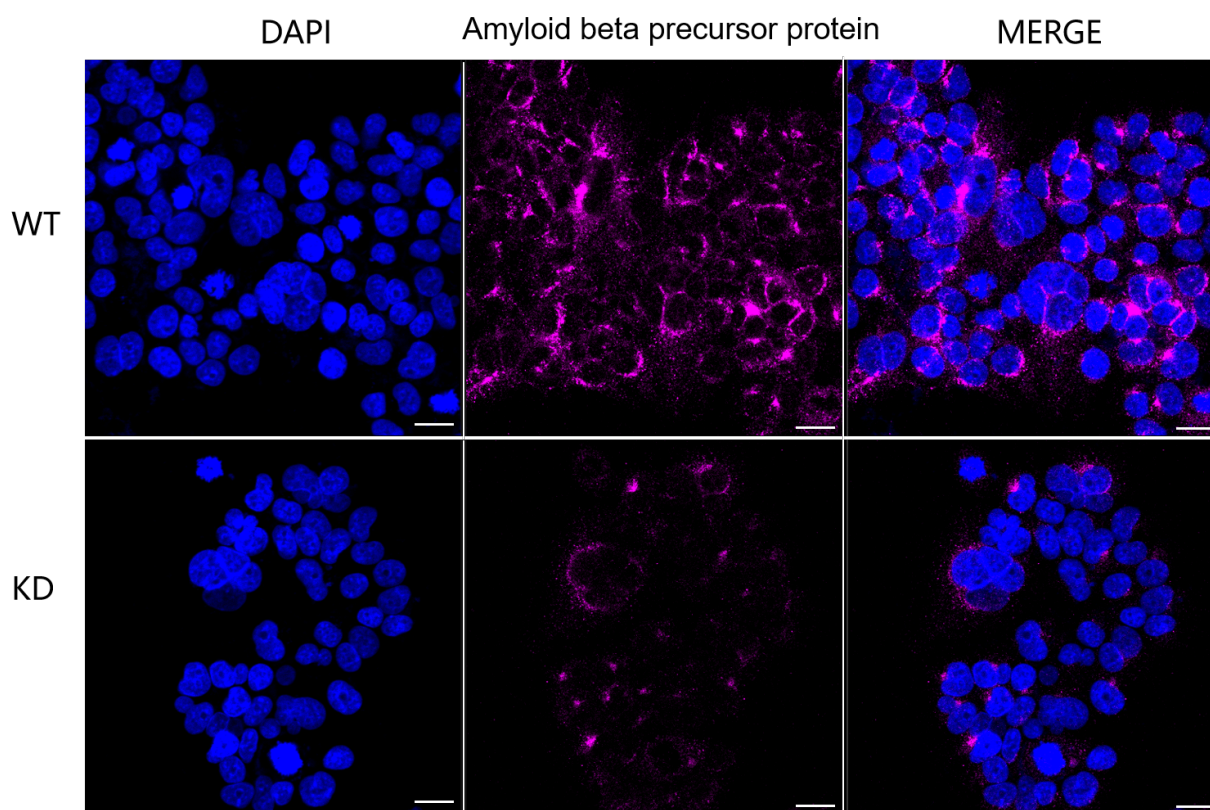
**WWW.GENUINBIOTECH.COM**



Western blotting analysis using anti-Amyloid beta precursor protein antibody (Cat#69660). Total cell lysates (30 µg) from various cell lines were loaded and separated by SDS-PAGE. The blot was incubated with anti-Amyloid beta precursor protein antibody (Cat#69660, 1:5,000) and HRP-conjugated goat anti-rabbit secondary antibody (Cat#201, 1:20,000) respectively. Image was developed using FeQ™ ECL Substrate Kit (Cat#226).



Western blotting analysis using anti-Amyloid beta precursor protein antibody (Cat#69660). Amyloid beta precursor protein expression in wild type (WT) and amyloid beta precursor protein shRNA knockdown (KD) HeLa cells with 30 µg of total cell lysates. β-Tubulin serves as a loading control. The blot was incubated with anti-Amyloid beta precursor protein antibody (Cat#69660, 1:5,000) and HRP-conjugated goat anti-rabbit secondary antibody (Cat#201, 1:20,000) respectively. Image was developed using FeQ™ ECL Substrate Kit (Cat#226).



## **KD-Validated Anti-Amyloid beta precursor protein Recombinant Rabbit Monoclonal**

PAGE 5

Immunocytochemical staining of HeLa cells using anti-Amyloid beta precursor protein antibody (Cat#69660, 1:1,000), Top panel: wild-type (WT); Bottom panel: Amyloid beta precursor protein shRNA knockdown (KD). Nuclei were stained blue with DAPI; Amyloid beta precursor protein was stained magenta with Alexa Fluor® 647. Scale bar, 20 µm. Permeabilization: Triton.

---

### **SUPPORT**

SUPPORT@GENUINBIOTECH.COM  
TEL: +1-540-855-7041

### **ORDERS**

SALES@GENUINBIOTECH.COM  
FAX: +1-540-855-7041

**WWW.GENUINBIOTECH.COM**