

KD-Validated Anti-Arrestin beta 1 Recombinant Rabbit Monoclonal Antibody



Catalog #: 69661

Aliases

ARRB1; Arrestin Beta 1; ARR1; Non-Visual Arrestin-2; Beta-Arrestin-1; Arrestin 2; Arrestin, Beta 1; Arrestin Beta-1; ARB1

Background

Gene Name: ARRB1

NCBI Gene Entry: [408](#)

UniProt Entry: [P49407](#)

Application Information

Molecular Weight: Predicted, 47 kDa, observed, 50 kDa

Clonality: Rabbit monoclonal antibody

Clone ID: 23GB1755

Species Reactivity: Human, mouse

Applications Tested: Western blotting (WB), flow cytometry (FCM), immunocytochemistry (IC)

Immunogen

A synthesized peptide derived from human ARRB1

Isotype

Rabbit IgG

Storage Buffer

Supplied in PBS (pH 7.4) containing 50% glycerol, and 0.02% sodium azide.

Storage

Store at -20 °C for one year.

Recommended Dilutions

Western Blotting (WB): 1:1,000-1:5,000

Flow Cytometry (FCM): 1:2,000

Immunocytochemistry (IC): 1:100-1:1,000

Note: This product is for research use only.

Validation Data

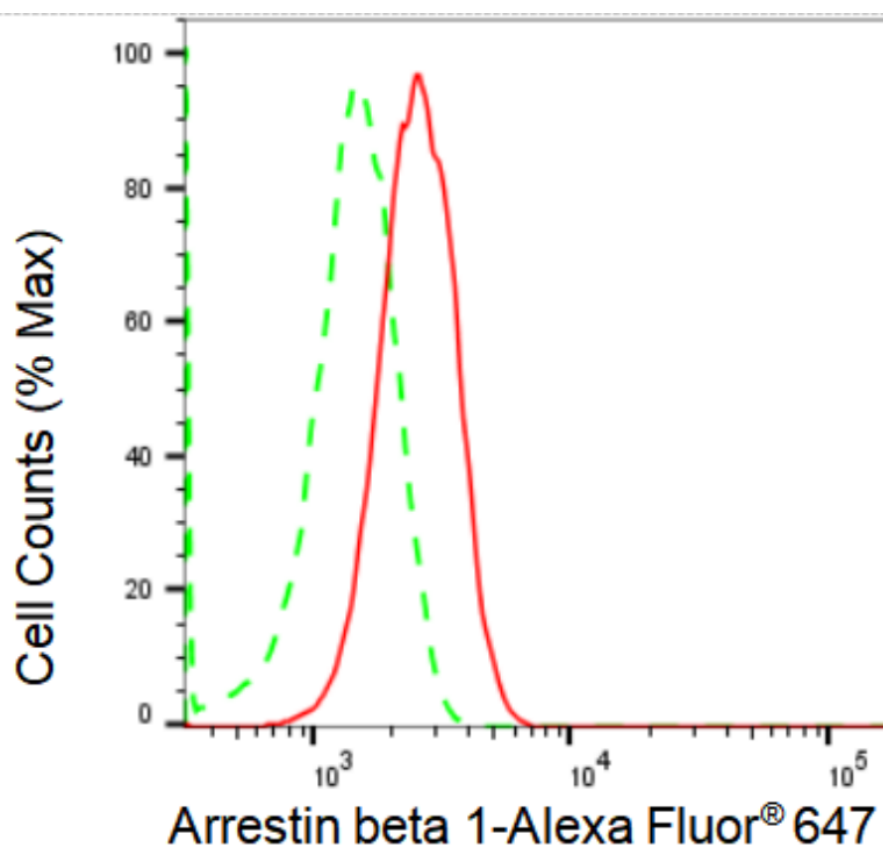
SUPPORT

SUPPORT@GENUINBIOTECH.COM
TEL: +1-540-855-7041

ORDERS

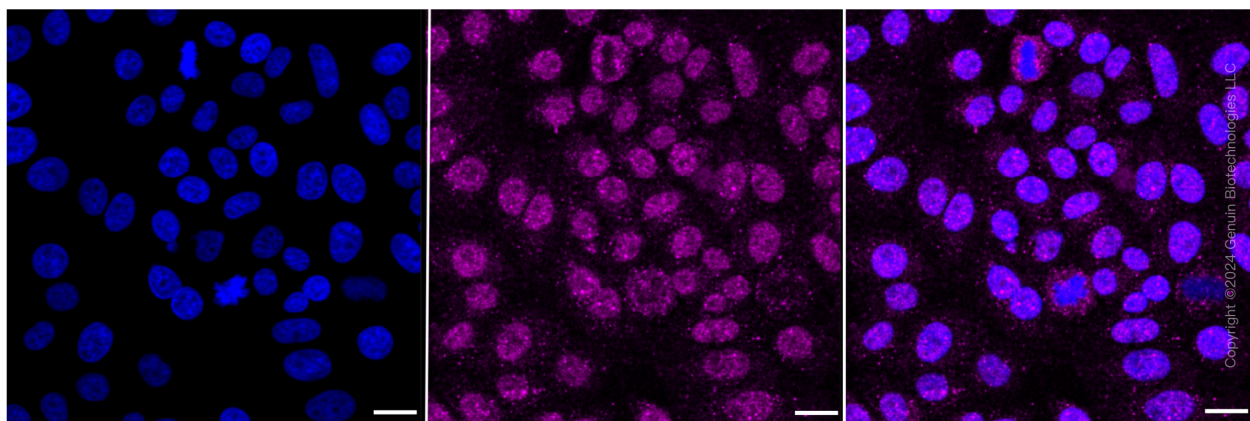
SALES@GENUINBIOTECH.COM
FAX: +1-540-855-7041

WWW.GENUINBIOTECH.COM



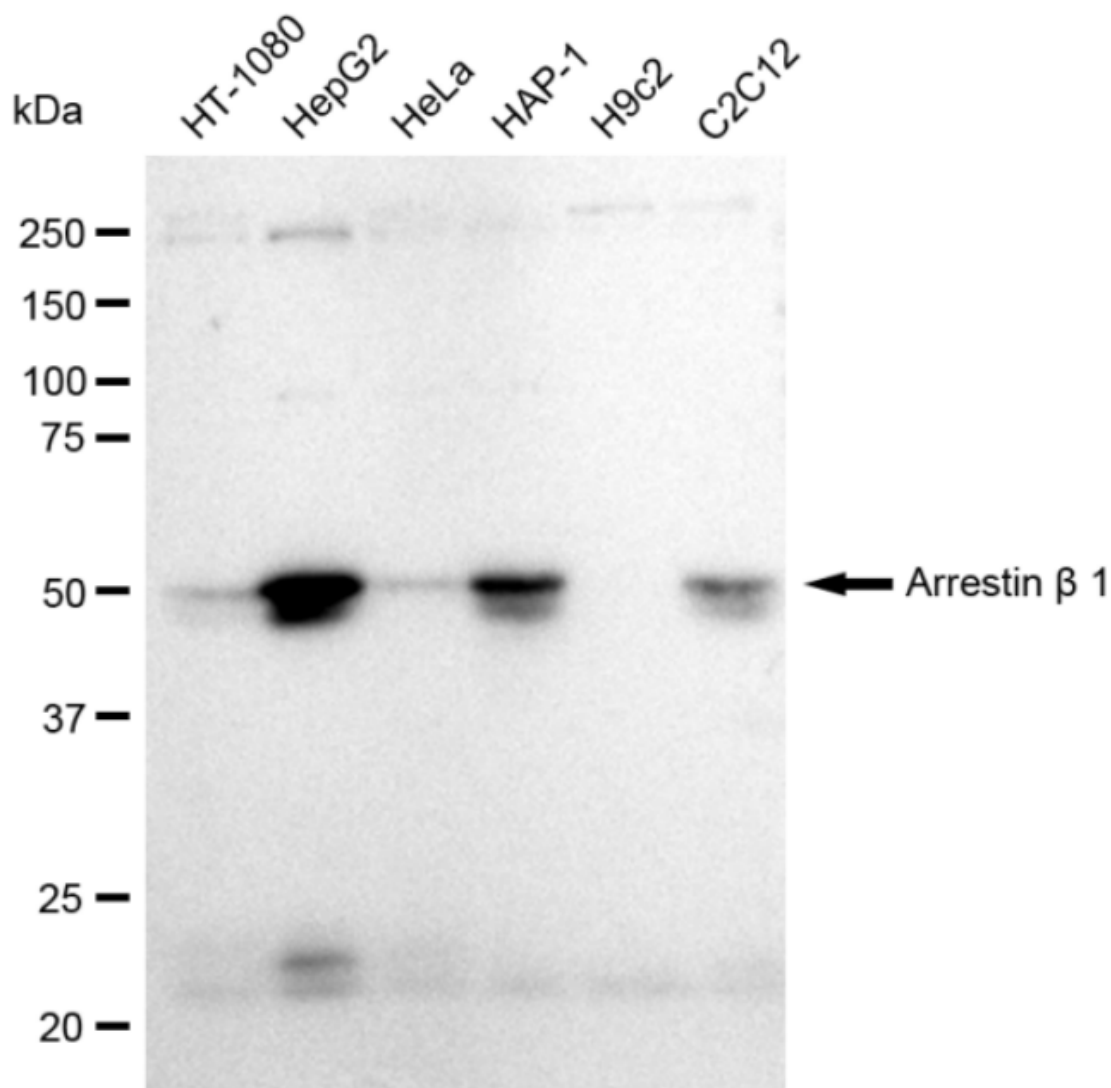
Copyright ©2024 Genuin Biotechnologies LLC

Flow cytometric analysis of Arrestin beta 1 expression in HepG2 cells using Arrestin beta 1 antibody (Cat#69661, 1:2,000). Green, isotype control; red, Arrestin beta 1.



Copyright ©2024 Genuin Biotechnologies LLC

Immunocytochemical staining of HepG2 cells with Arrestin beta 1 antibody (Cat#69661, 1:1,000). Nuclei were stained blue with DAPI; Arrestin beta 1 was stained magenta with Alexa Fluor® 647. Images were taken using Leica stellaris 5. Protein abundance based on laser Intensity and smart gain: Low. Scale bar: 20 μm .

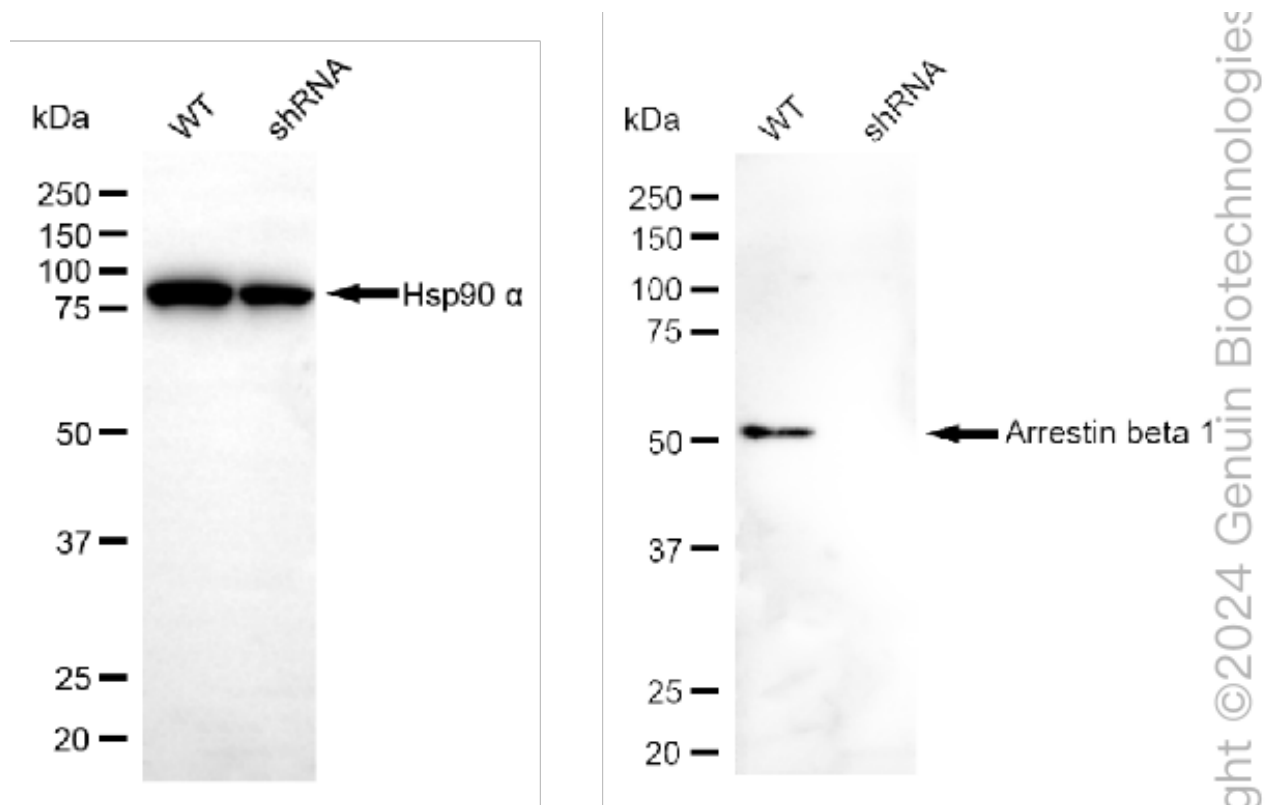


Copyright ©2024 Genuin Biotechnologies LLC

Western blotting analysis using anti-Arrestin beta 1 antibody (Cat#69661). Total cell lysates (30 μ g) from various cell lines were loaded and separated by SDS-PAGE. The blot was incubated with anti-Arrestin beta 1 antibody (Cat#69661, 1:5,000) and HRP-conjugated goat anti-rabbit secondary antibody (Cat#201, 1:20,000) respectively. Image was developed using FeQ™ ECL Substrate Kit (Cat#226).

KD-Validated Anti-Arrestin beta 1 Recombinant Rabbit Monoclonal Antibody

PAGE 4



Western blotting analysis using anti-Arrestin beta 1 antibody (Cat#69661). Arrestin beta 1 expression in wild type (WT) and arrestin beta 1 shRNA knockdown (KD) HeLa cells with 30 µg of total cell lysates. Hsp90 α serves as a loading control. The blot was incubated with anti-Arrestin beta 1 antibody (Cat#69661, 1:5,000) and HRP-conjugated goat anti-rabbit secondary antibody (Cat#201, 1:20,000) respectively. Image was developed using FeQ™ ECL Substrate Kit (Cat#226).

SUPPORT

SUPPORT@GENUINBIOTECH.COM
TEL: +1-540-855-7041

ORDERS

SALES@GENUINBIOTECH.COM
FAX: +1-540-855-7041

WWW.GENUINBIOTECH.COM