

KD-Validated Anti-G-rich RNA sequence binding factor 1 Recombinant Rabbit



Catalog #: 69672

Aliases

GRSF1; G-Rich RNA Sequence Binding Factor 1; G-Rich Sequence Factor 1; GRSF-1

Background

Gene Name: GRSF1

NCBI Gene Entry: [2926](#)

UniProt Entry: [Q12849](#)

Application Information

Molecular Weight: Predicted, 53 kDa, observed, 53 kDa

Clonality: Rabbit monoclonal antibody

Clone ID: 23GB1660

Species Reactivity: Human

Applications Tested: Western blotting (WB), flow cytometry (FCM), immunocytochemistry (IC)

Immunogen

A synthesized peptide derived from human GRSF1

Isotype

Rabbit IgG

Storage Buffer

Supplied in PBS (pH 7.4) containing 50% glycerol, and 0.02% sodium azide.

Storage

Store at -20 °C for one year.

Recommended Dilutions

Western Blotting (WB): 1:1,000-1:5,000

Flow Cytometry (FCM): 1:2,000

Immunocytochemistry (IC): 1:100-1:1,000

Note: This product is for research use only.

Validation Data

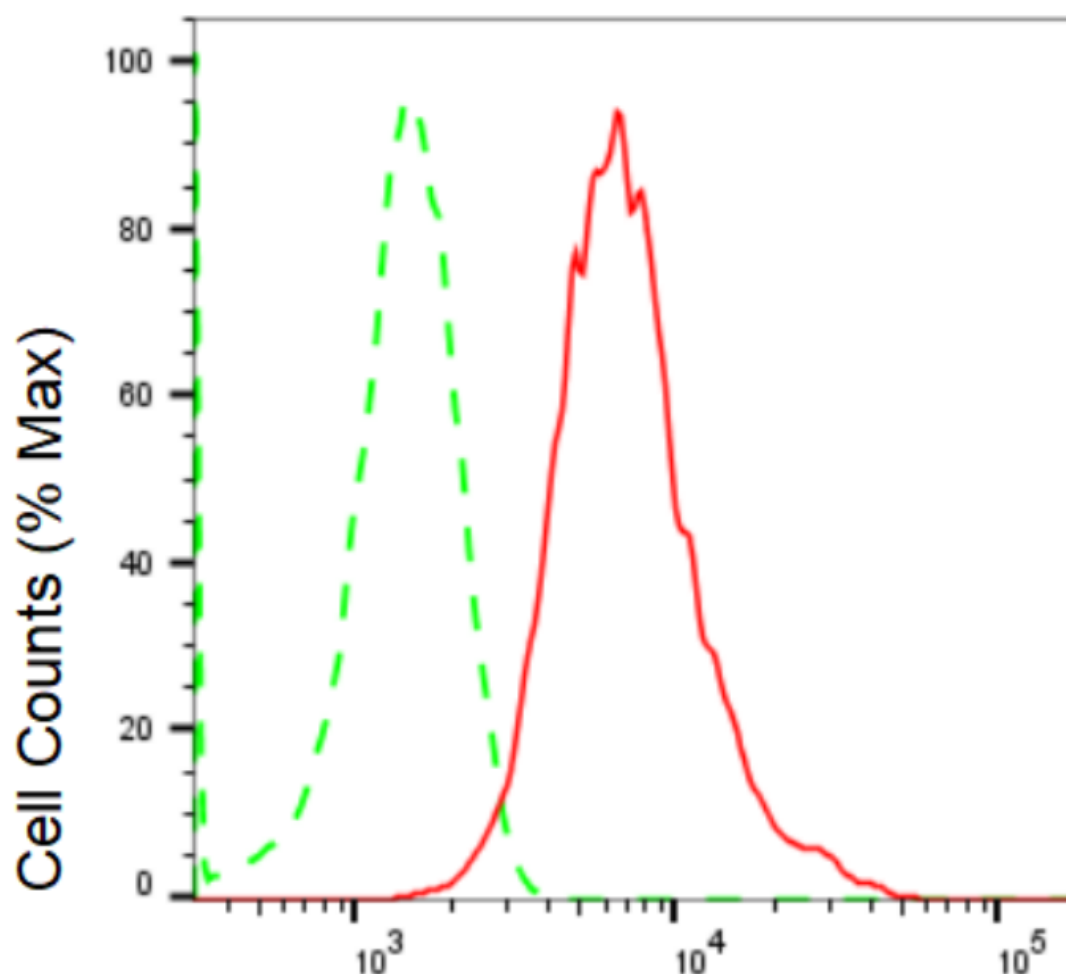
SUPPORT

SUPPORT@GENUINBIOTECH.COM
TEL: +1-540-855-7041

ORDERS

SALES@GENUINBIOTECH.COM
FAX: +1-540-855-7041

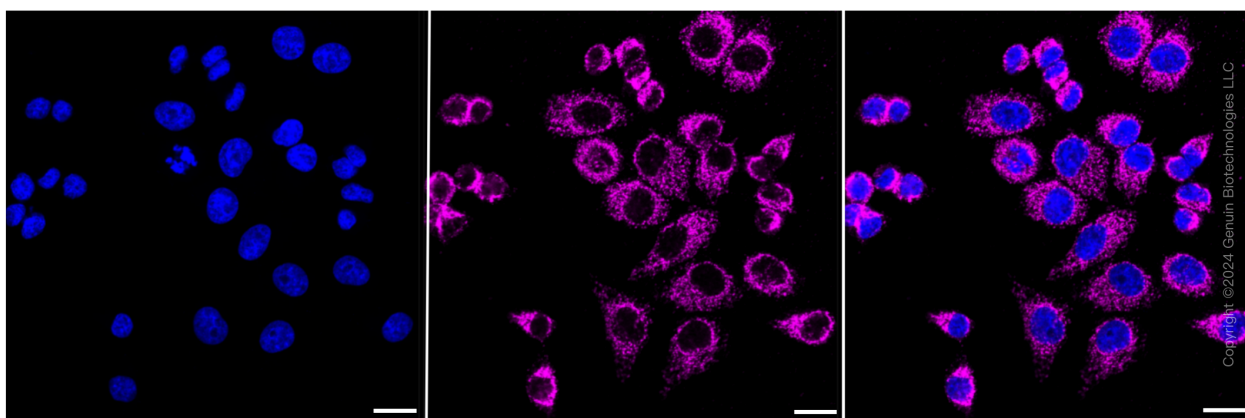
WWW.GENUINBIOTECH.COM



Copyright ©2024 Genuin Biotechnologies LLC

G-rich RNA sequence binding factor 1-Alexa Fluor® 647

Flow cytometric analysis of G-rich RNA sequence binding factor 1 expression in HepG2 cells using G-rich RNA sequence binding factor 1 antibody (Cat#69672, 1:2,000). Green, isotype control; red, G-rich RNA sequence binding factor 1.



SUPPORT

SUPPORT@GENUINBIOTECH.COM
TEL: +1-540-855-7041

ORDERS

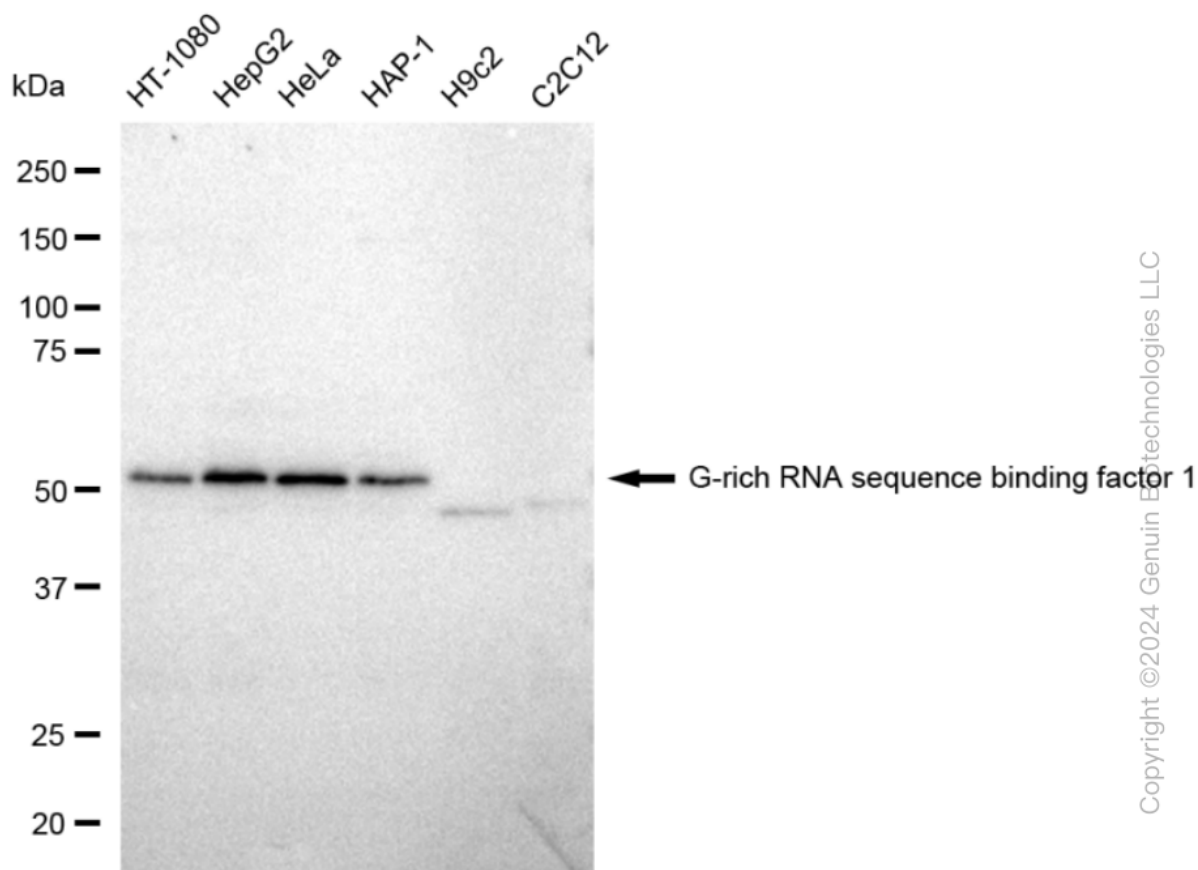
SALES@GENUINBIOTECH.COM
FAX: +1-540-855-7041

WWW.GENUINBIOTECH.COM

KD-Validated Anti-G-rich RNA sequence binding factor 1 Recombinant Rabbit binding factor 1

PAGE 3

Immunocytochemical staining of HepG2 cells with G-rich RNA sequence binding factor 1 antibody (Cat#69672, 1:1,000). Nuclei were stained blue with DAPI; G-rich RNA sequence binding factor 1 was stained magenta with Alexa Fluor® 647. Images were taken using Leica stellaris 5. Protein abundance based on laser Intensity and smart gain: High. Scale bar: 20 µm.



Western blotting analysis using anti-G-rich RNA sequence binding factor 1 antibody (Cat#69672). Total cell lysates (30 µg) from various cell lines were loaded and separated by SDS-PAGE. The blot was incubated with anti-G-rich RNA sequence binding factor 1 antibody (Cat#69672, 1:5,000) and HRP-conjugated goat anti-rabbit secondary antibody (Cat#201, 1:20,000) respectively. Image was developed using FeQ™ ECL Substrate Kit (Cat#226).

SUPPORT

SUPPORT@GENUINBIOTECH.COM
TEL: +1-540-855-7041

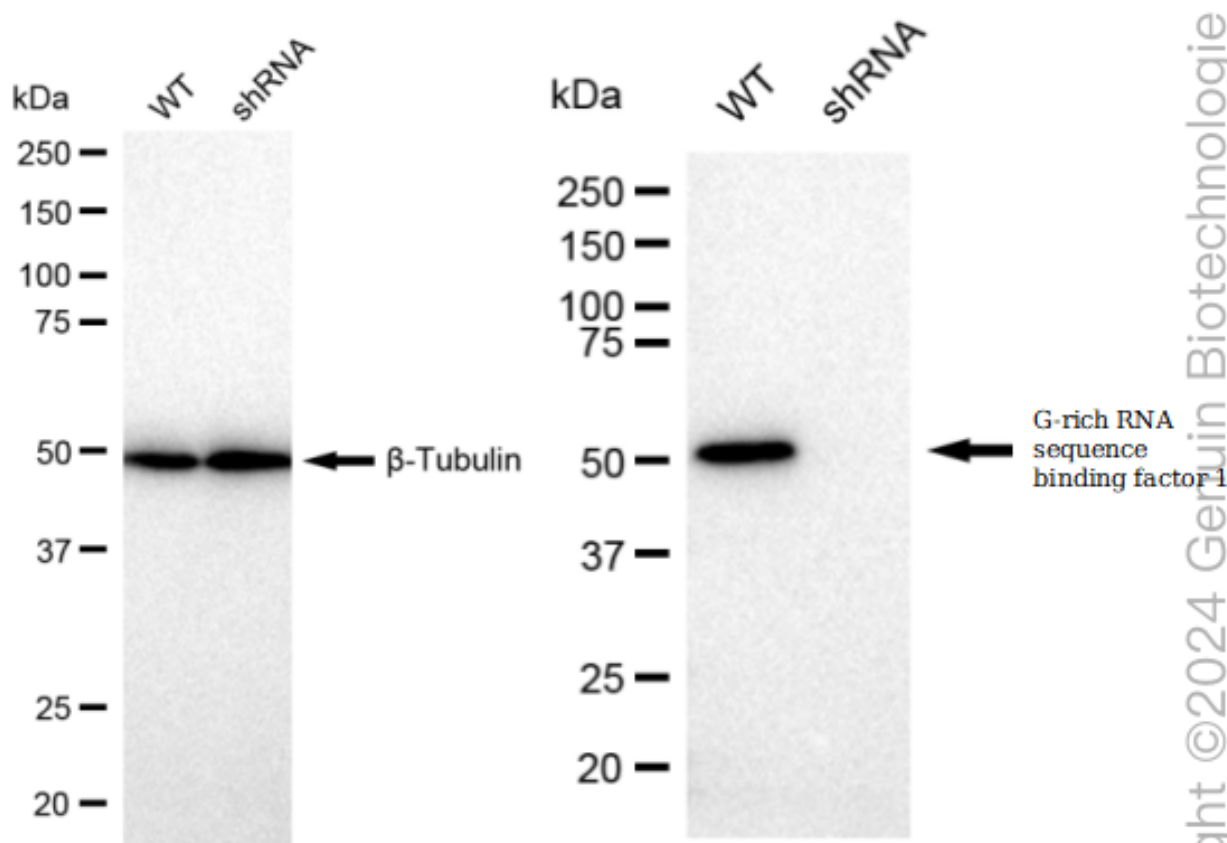
ORDERS

SALES@GENUINBIOTECH.COM
FAX: +1-540-855-7041

WWW.GENUINBIOTECH.COM

KD-Validated Anti-G-rich RNA sequence binding factor 1 Recombinant Rabbit

PAGE 4



Western blotting analysis using anti-G-rich RNA sequence binding factor 1 antibody (Cat#69672). G-rich RNA sequence binding factor 1 expression in wild type (WT) and G-rich RNA sequence binding factor 1 shRNA knockdown (KD) HeLa cells with 30 µg of total cell lysates. β-Tubulin serves as a loading control. The blot was incubated with anti-G-rich RNA sequence binding factor 1 antibody (Cat#69672, 1:5,000) and HRP-conjugated goat anti-rabbit secondary antibody (Cat#201, 1:20,000) respectively. Image was developed using FeQ™ ECL Substrate Kit (Cat#226).

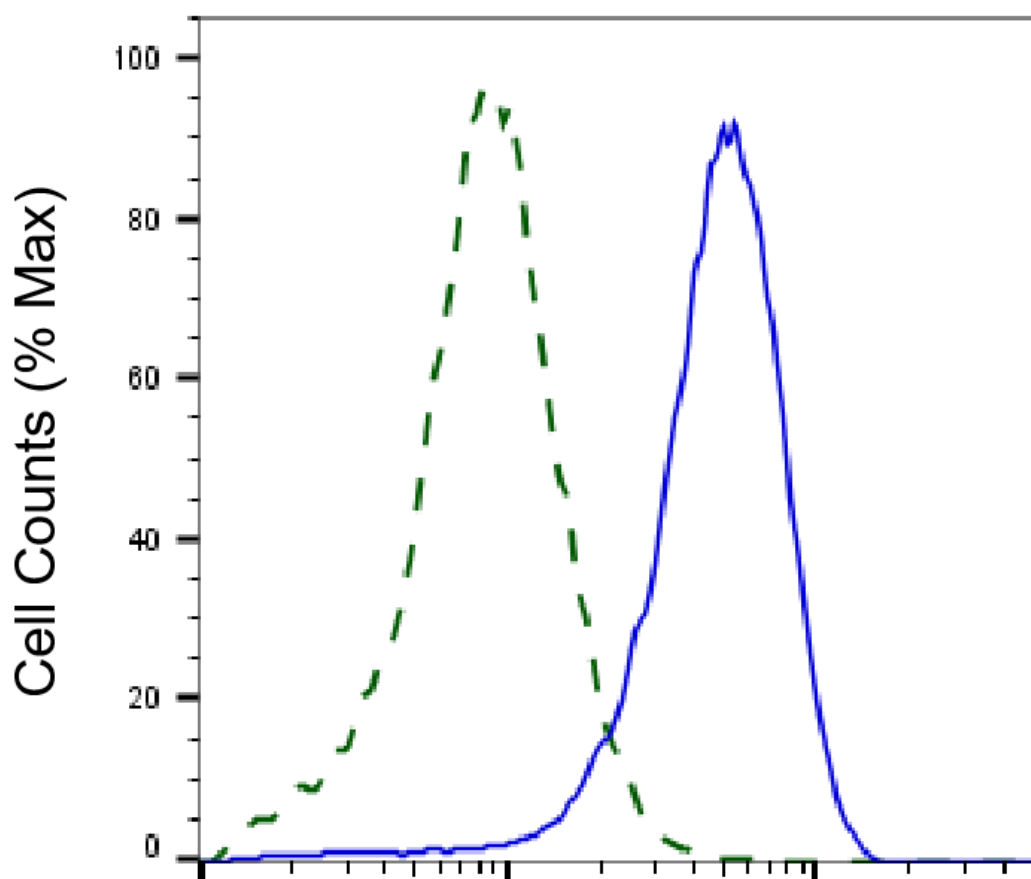
SUPPORT

SUPPORT@GENUINBIOTECH.COM
TEL: +1-540-855-7041

ORDERS

SALES@GENUINBIOTECH.COM
FAX: +1-540-855-7041

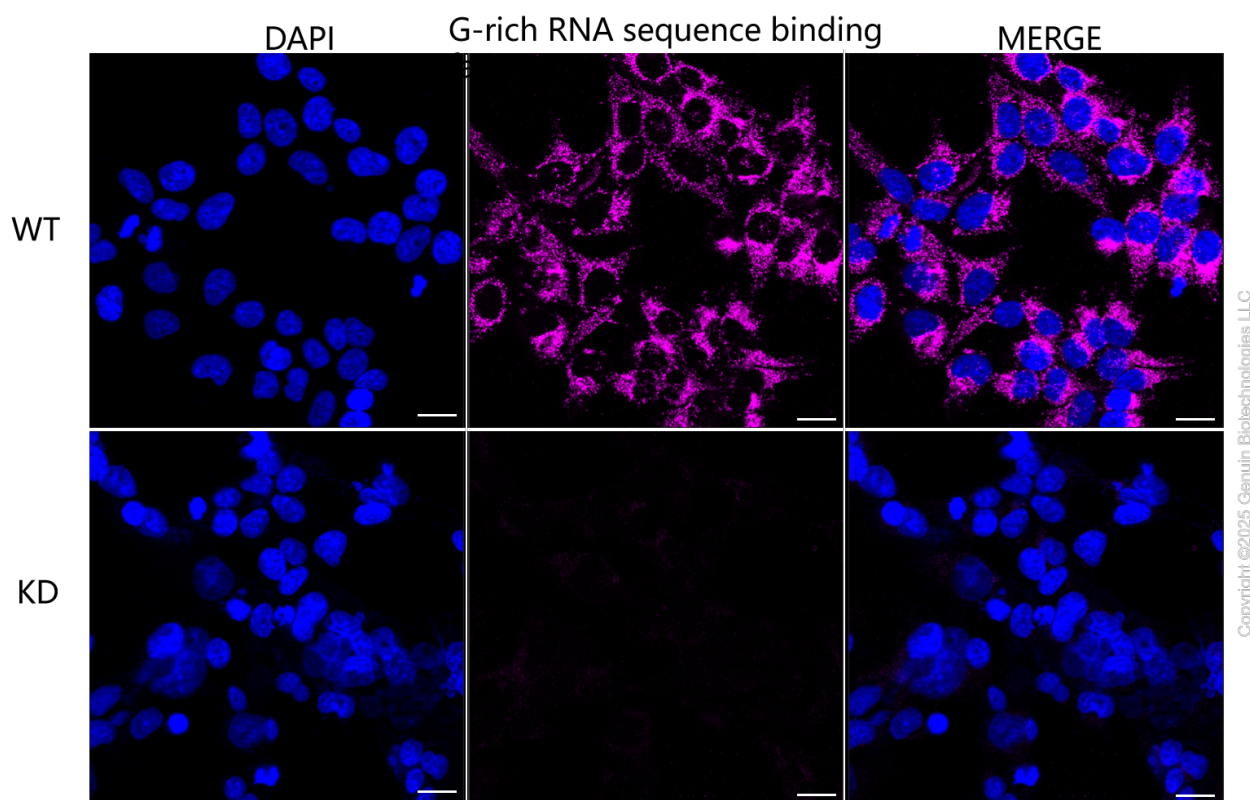
WWW.GENUINBIOTECH.COM



Copyright ©2025 Genuin Biotechnologies LLC

G-rich RNA sequence binding factor 1-Alexa Fluor® 647

Validation of G-rich RNA sequence binding factor 1 knockdown using flow cytometry. Wild-type(WT, Blue) and knockdown(KD, Green) HeLa cells were stained with anti-G-rich RNA sequence binding factor 1 antibody (Cat#69672, 1:2,000) and analyzed using BD flow cytometer.



Immunocytochemical staining of HeLa cells using anti-G-rich RNA sequence binding factor 1 antibody (Cat#69672, 1:1,000), Top panel: wild-type (WT); Bottom panel: G-rich RNA sequence binding factor 1 shRNA knockdown (KD). Nuclei were stained blue with DAPI; G-rich RNA sequence binding factor 1 was stained magenta with Alexa Fluor® 647. Scale bar, 20 μ m.