

KD-Validated Anti-TFE3 Recombinant Rabbit Monoclonal Antibody



Catalog #: 69680

Aliases

TFE3; Transcription Factor Binding To IGHM Enhancer 3; BHLHe33; TFEA; Class E Basic Helix-Loop-Helix Protein 33; Transcription Factor E3; Transcription Factor For Immunoglobulin Heavy-Chain Enhancer 3; Transcription Factor E Family, Member A; Transcription Factor For IgH Enhancer; BHLHE33; MRXSPF; RCCP2; RCCX1

Background

Gene Name: TFE3

NCBI Gene Entry: [7030](#)

UniProt Entry: [P19532](#)

Application Information

Molecular Weight: Predicted, 62 kDa, observed, 62 kDa

Clonality: Rabbit monoclonal antibody

Clone ID: 24GB2630

Species Reactivity: Human, mouse, rat

Applications Tested: Western blotting (WB), flow cytometry (FCM), immunocytochemistry (IC)

Immunogen

A synthesized peptide derived from human TFE3

Isotype

Rabbit IgG

Storage Buffer

Supplied in PBS (pH 7.4) containing 50% glycerol, and 0.02% sodium azide.

Storage

Store at -20 °C for one year.

Recommended Dilutions

Western Blotting (WB): 1:1,000-1:5,000

Flow Cytometry (FCM): 1:2,000

Immunocytochemistry (IC): 1:100-1:1,000

SUPPORT

SUPPORT@GENUINBIOTECH.COM
TEL: +1-540-855-7041

ORDERS

SALES@GENUINBIOTECH.COM
FAX: +1-540-855-7041

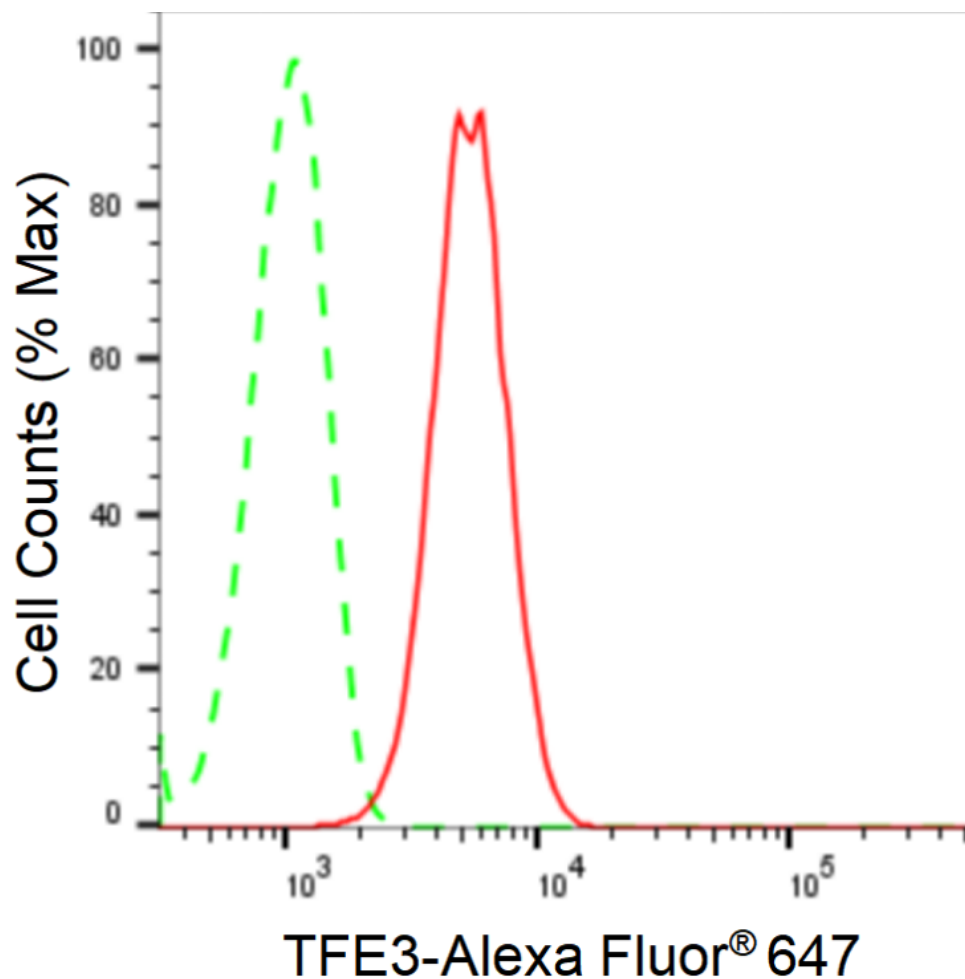
WWW.GENUINBIOTECH.COM

KD-Validated Anti-TFE3 Recombinant Rabbit Monoclonal Antibody

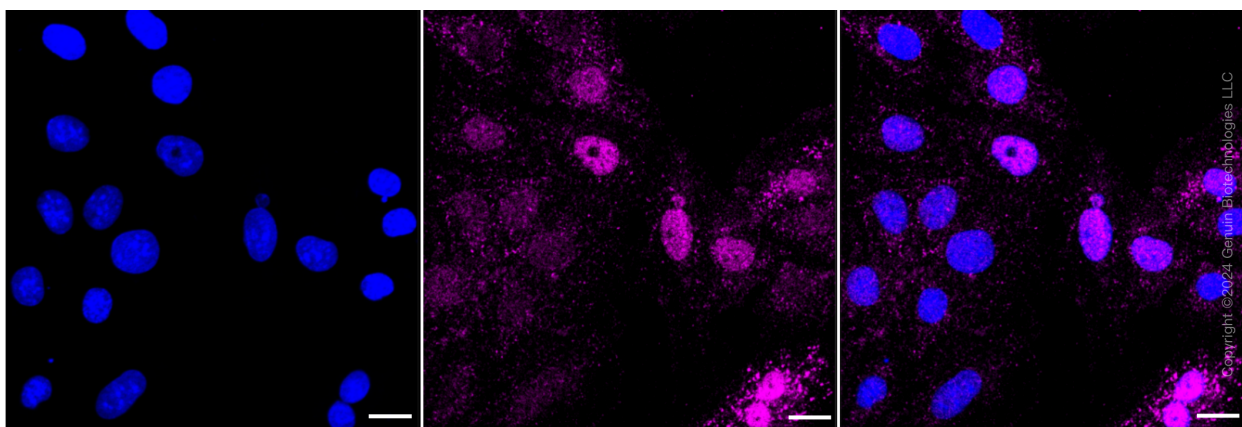
PAGE 2

Note: This product is for research use only.

Validation Data



Flow cytometric analysis of TFE3 expression in H9c2 cells using anti-TFE3 antibody (Cat#69680, 1:2,000). Green, isotype control; red, TFE3.



Immunocytochemical staining of H9c2 cells with anti-TFE3 antibody (Cat#69680, 1:1,000).

SUPPORT

SUPPORT@GENUINBIOTECH.COM
TEL: +1-540-855-7041

ORDERS

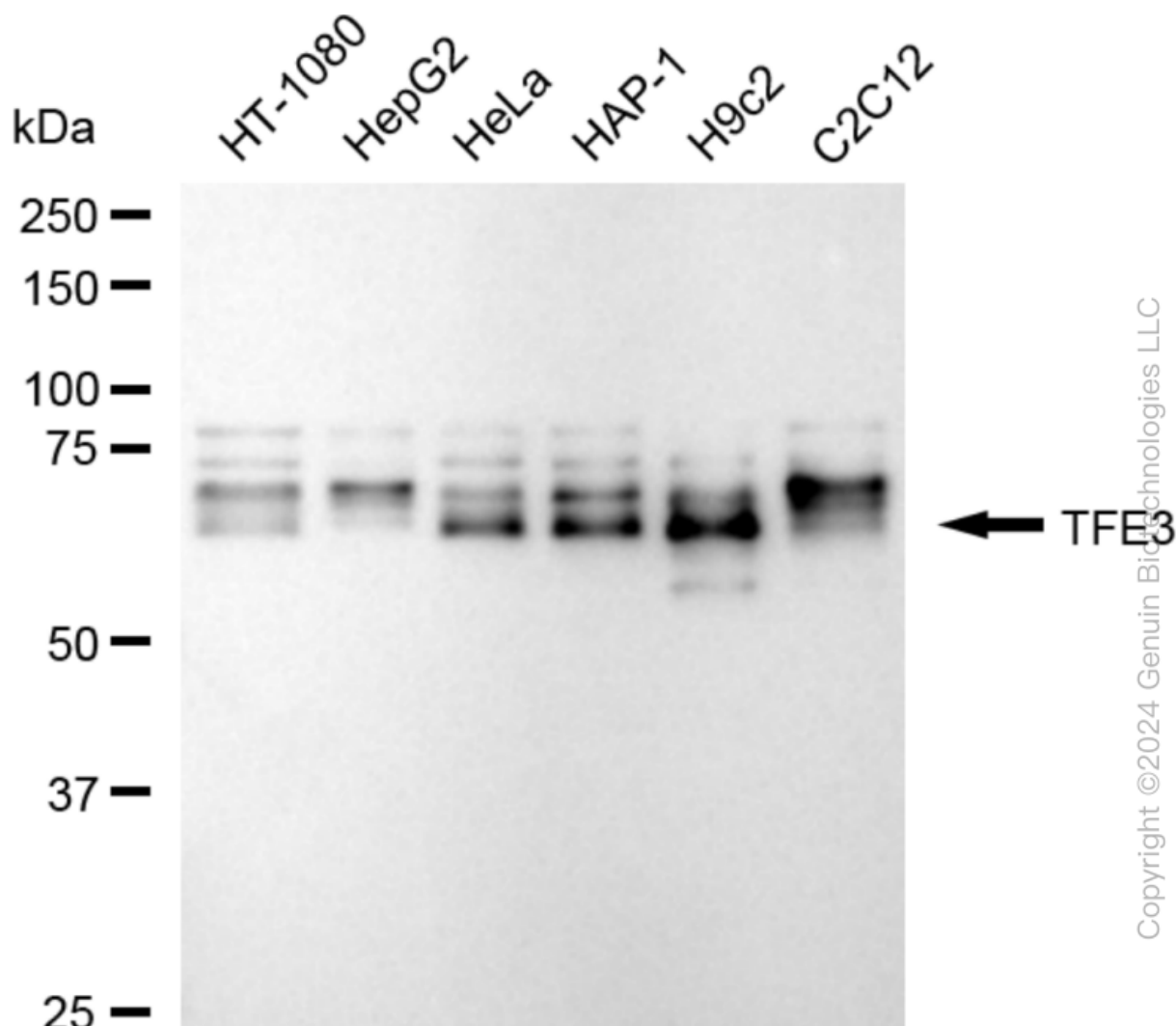
SALES@GENUINBIOTECH.COM
FAX: +1-540-855-7041

WWW.GENUINBIOTECH.COM

KD-Validated Anti-TFE3 Recombinant Rabbit Monoclonal Antibody

PAGE 3

Nuclei were stained blue with DAPI; TFE3 was stained magenta with Alexa Fluor® 647. Images were taken using Leica stellaris 5. Protein abundance based on laser Intensity and smart gain: Medium. Scale bar: 20 µm.



Western blotting analysis using anti-TFE3 antibody (Cat#69680). Total cell lysates (30 µg) from various cell lines were loaded and separated by SDS-PAGE. The blot was incubated with anti-TFE3 antibody (Cat#69680, 1:5,000) and HRP-conjugated goat anti-rabbit secondary antibody (Cat#201, 1:20,000) respectively. Image was developed using FeQ™ ECL Substrate Kit (Cat#226).

SUPPORT

SUPPORT@GENUINBIOTECH.COM
TEL: +1-540-855-7041

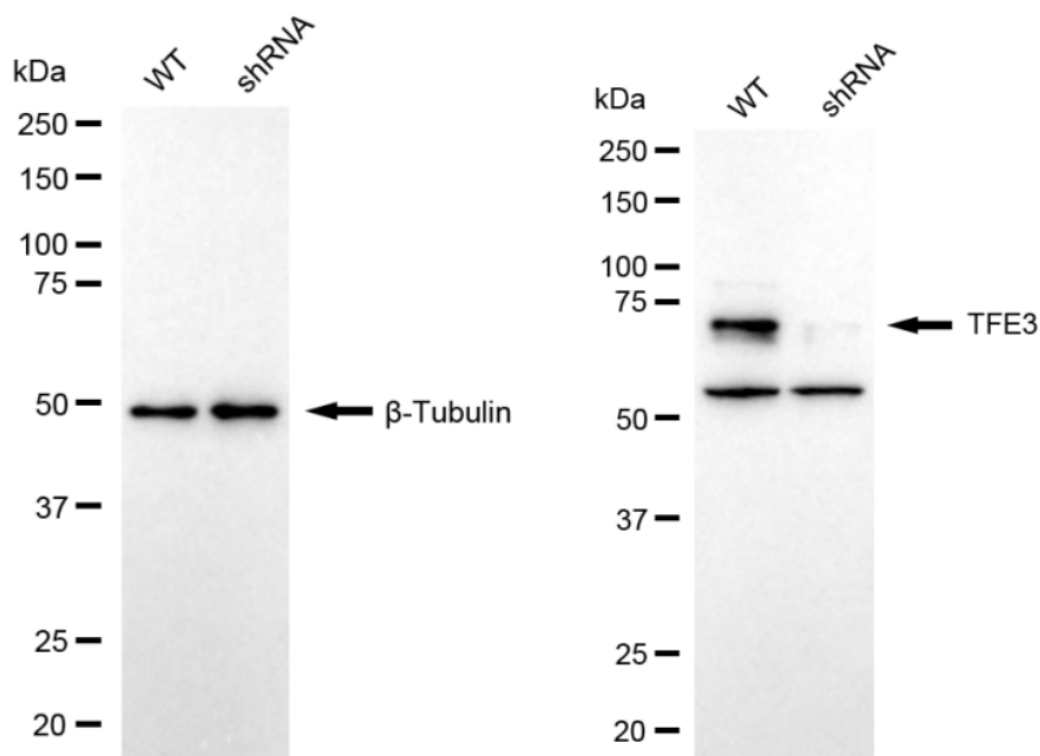
ORDERS

SALES@GENUINBIOTECH.COM
FAX: +1-540-855-7041

WWW.GENUINBIOTECH.COM

KD-Validated Anti-TFE3 Recombinant Rabbit Monoclonal Antibody

PAGE 4



Copyright ©2024 Genuin Biotechnologies LLC

Western blotting analysis using anti-TFE3 antibody (Cat#69680). TFE3 expression in wild-type (WT) and TFE3 shRNA knockdown (KD) HeLa cells with 20 µg of total cell lysates. β-Tubulin serves as a loading control. The blot was incubated with anti-TFE3 antibody (Cat#69680, 1:5,000) and HRP-conjugated goat anti-rabbit secondary antibody (Cat#201, 1:20,000) respectively. Image was developed using NaQ™ ECL Substrate Kit (Cat#716).

SUPPORT

SUPPORT@GENUINBIOTECH.COM
TEL: +1-540-855-7041

ORDERS

SALES@GENUINBIOTECH.COM
FAX: +1-540-855-7041

WWW.GENUINBIOTECH.COM