

KD-Validated Anti-Citrate synthetase Recombinant Rabbit Monoclonal Antibody



Catalog #: 69700

Aliases

CS; Citrate Synthase; Citrate Synthase, Mitochondrial; Citrate (Si)-Synthase; EC 2.3.3.1; EC 2.3.3

Background

Gene Name: CS

NCBI Gene Entry: [1431](#)

UniProt Entry: [O75390](#)

Application Information

Molecular Weight: Predicted, 52 kDa, observed, 45 kDa

Clonality: Rabbit monoclonal antibody

Clone ID: 23GB780

Species Reactivity: Human, mouse, rat

Applications Tested: Western blotting (WB), flow cytometry (FCM), immunocytochemistry (IC)

Immunogen

A synthesized peptide derived from human CS

Isotype

Rabbit IgG

Storage Buffer

Supplied in PBS (pH 7.4) containing 50% glycerol, and 0.02% sodium azide.

Storage

Store at -20 °C for one year.

Recommended Dilutions

Western Blotting (WB): 1:1,000-1:5,000

Flow Cytometry (FCM): 1:2,000

Immunocytochemistry (IC): 1:100-1:1,000

Note: This product is for research use only.

Validation Data

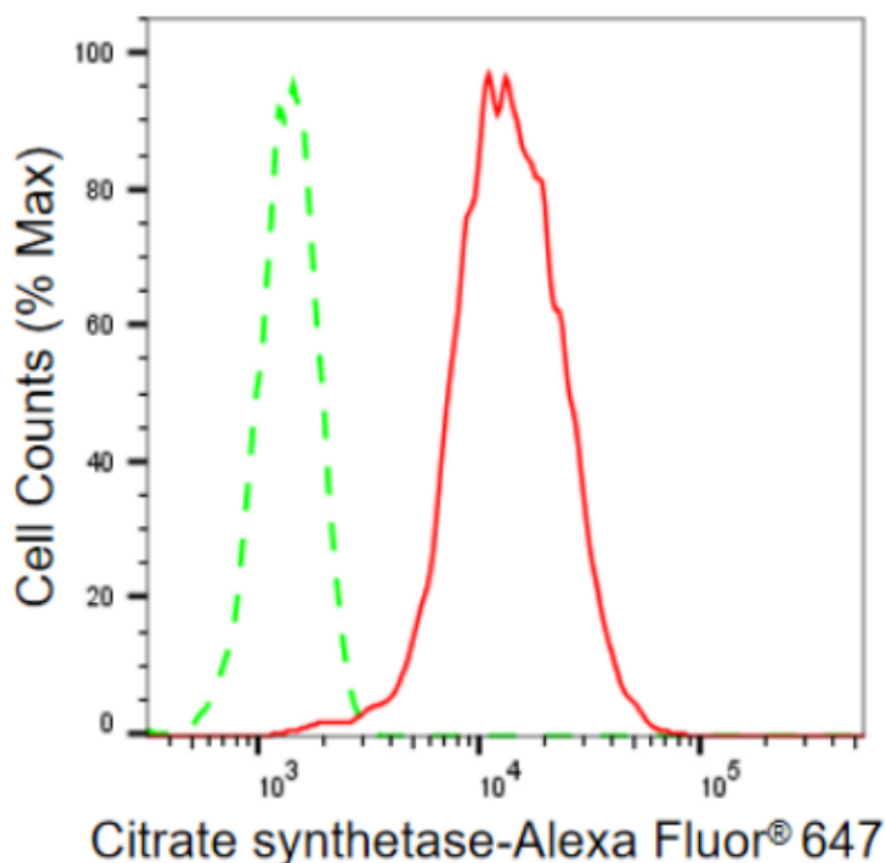
SUPPORT

SUPPORT@GENUINBIOTECH.COM
TEL: +1-540-855-7041

ORDERS

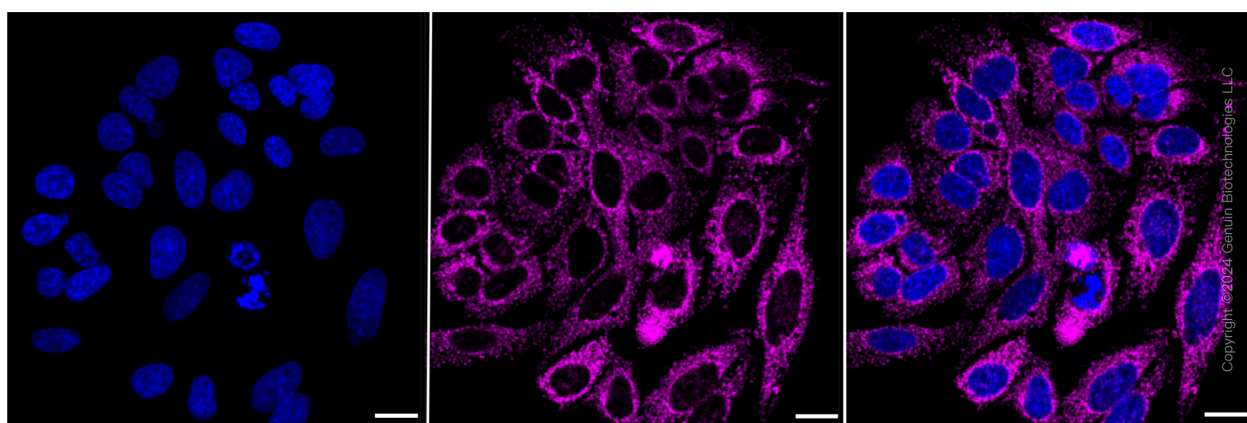
SALES@GENUINBIOTECH.COM
FAX: +1-540-855-7041

WWW.GENUINBIOTECH.COM



Copyright ©2024 Genuin Biotechnologies LLC

Flow cytometric analysis of Citrate synthetase expression in HepG2 cells using Citrate synthetase antibody (Cat#69700, 1:2,000). Green, isotype control; red, Citrate synthetase.



Copyright ©2024 Genuin Biotechnologies LLC

Immunocytochemical staining of HepG2 cells with Citrate synthetase antibody (Cat#69700, 1:1,000). Nuclei were stained blue with DAPI; Citrate synthetase was stained magenta with Alexa Fluor® 647. Images were taken using Leica stellaris 5. Protein abundance based on laser Intensity and smart gain: High. Scale bar: 20 μ m.

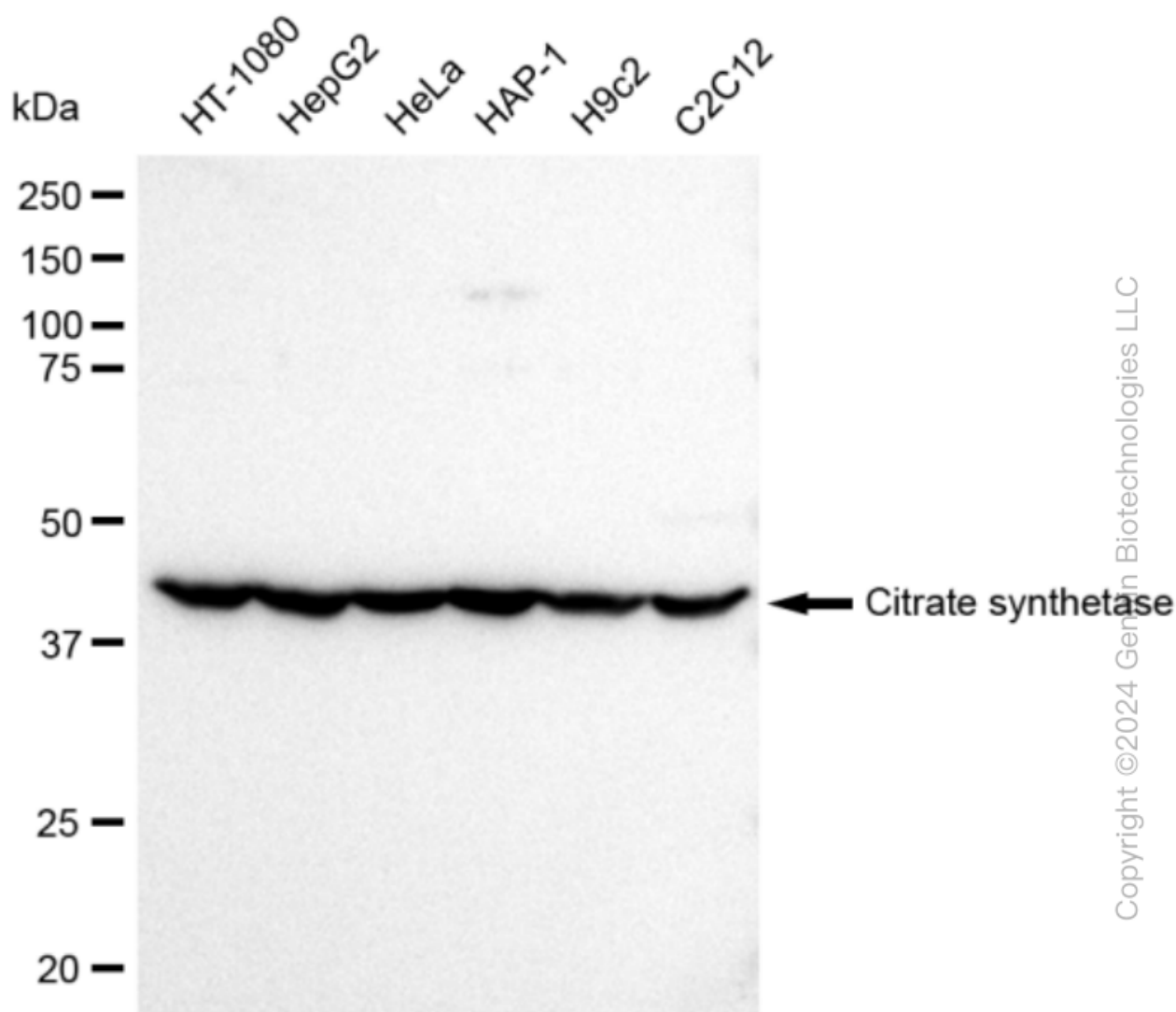
SUPPORT

SUPPORT@GENUINBIOTECH.COM
TEL: +1-540-855-7041

ORDERS

SALES@GENUINBIOTECH.COM
FAX: +1-540-855-7041

WWW.GENUINBIOTECH.COM

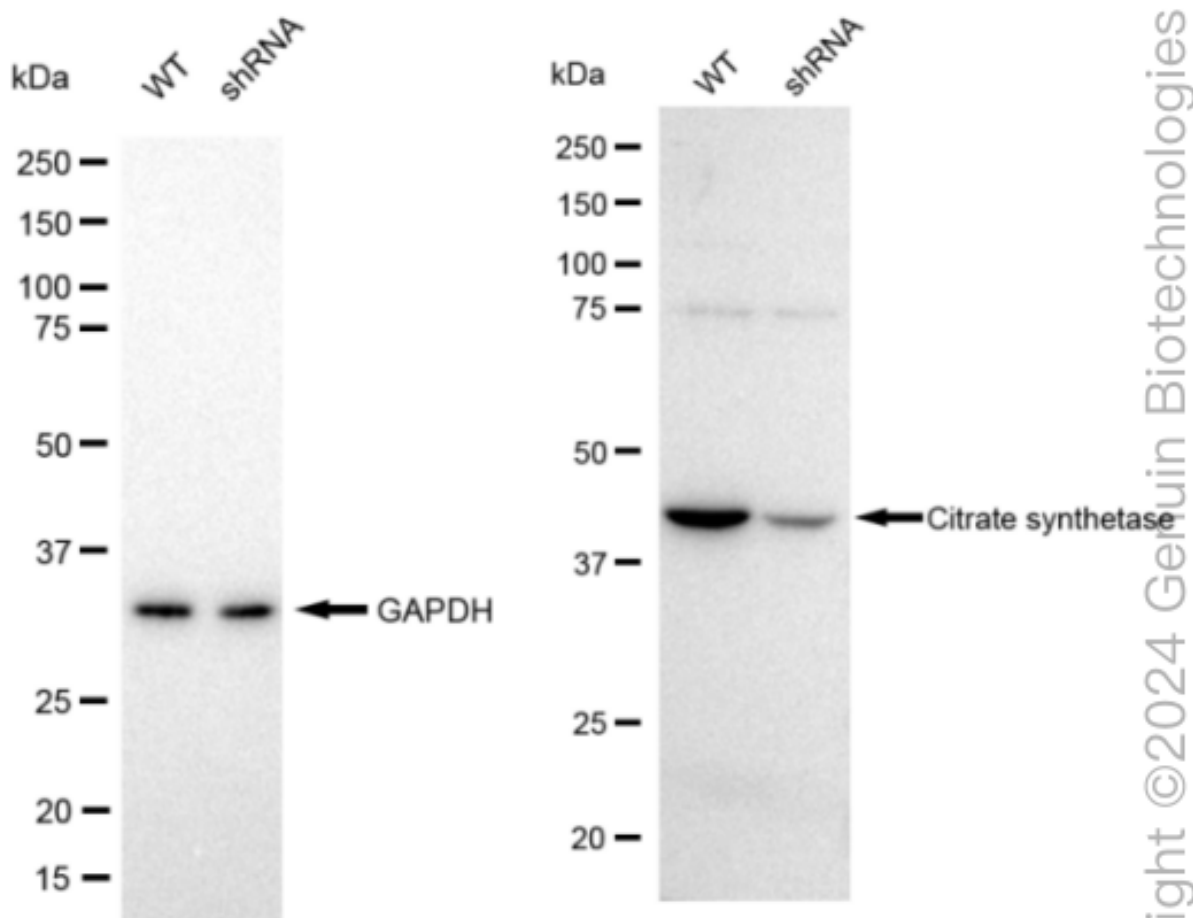


Copyright ©2024 Genin Biotechnologies LLC

Western blotting analysis using anti-Citrate synthetase antibody (Cat#69700). Total cell lysates (30 μ g) from various cell lines were loaded and separated by SDS-PAGE. The blot was incubated with anti-Citrate synthetase antibody (Cat#69700, 1:5,000) and HRP-conjugated goat anti-rabbit secondary antibody (Cat#201, 1:50,000) respectively. Image was developed using FeQ™ ECL Substrate Kit (Cat#226).

KD-Validated Anti-Citrate synthetase Recombinant Rabbit Monoclonal Antibody

PAGE 4



Western blotting analysis using anti-Citrate synthetase antibody (Cat#69700). Citrate synthetase expression in wild type (WT) and Citrate synthetase shRNA knockdown (KD) HeLa cells with 30 μ g of total cell lysates. GAPDH serves as a loading control. The blot was incubated with anti-Citrate synthetase antibody (Cat#69700, 1:5,000) and HRP-conjugated goat anti-rabbit secondary antibody (Cat#201, 1:50,000) respectively. Image was developed using FeQ™ ECL Substrate Kit (Cat#226).

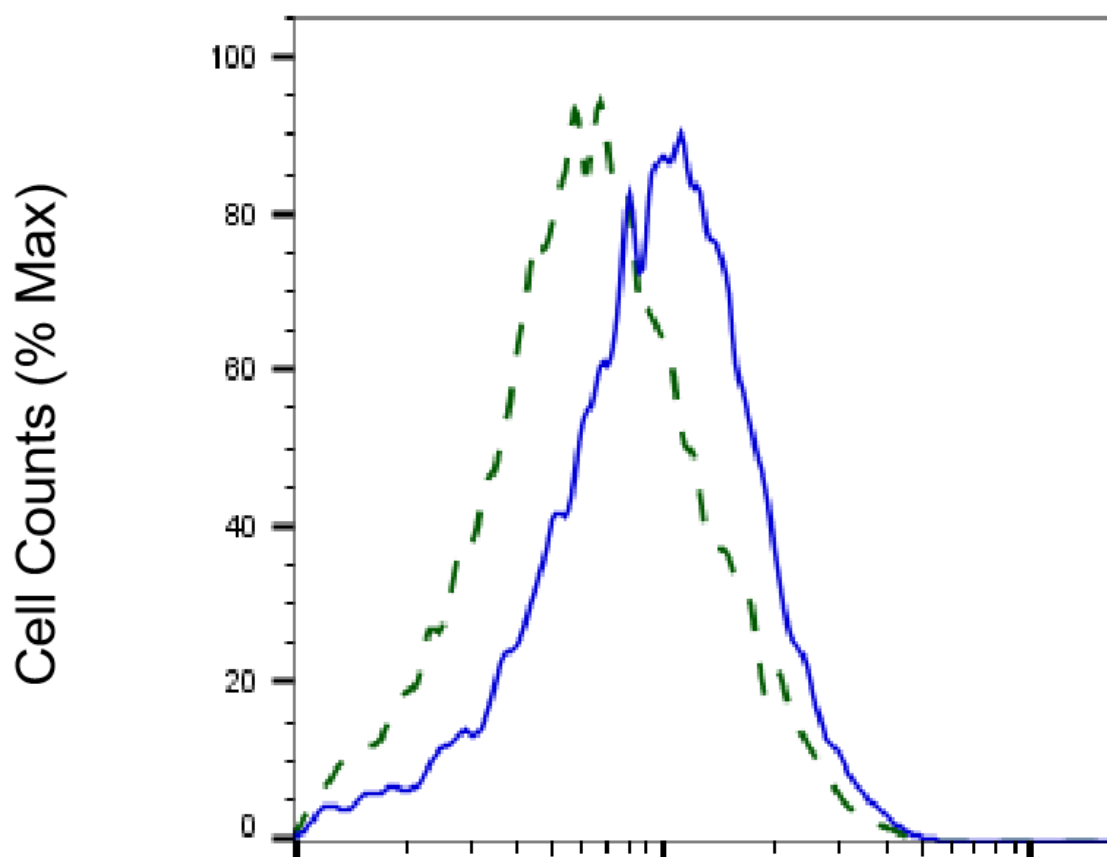
SUPPORT

SUPPORT@GENUINBIOTECH.COM
TEL: +1-540-855-7041

ORDERS

SALES@GENUINBIOTECH.COM
FAX: +1-540-855-7041

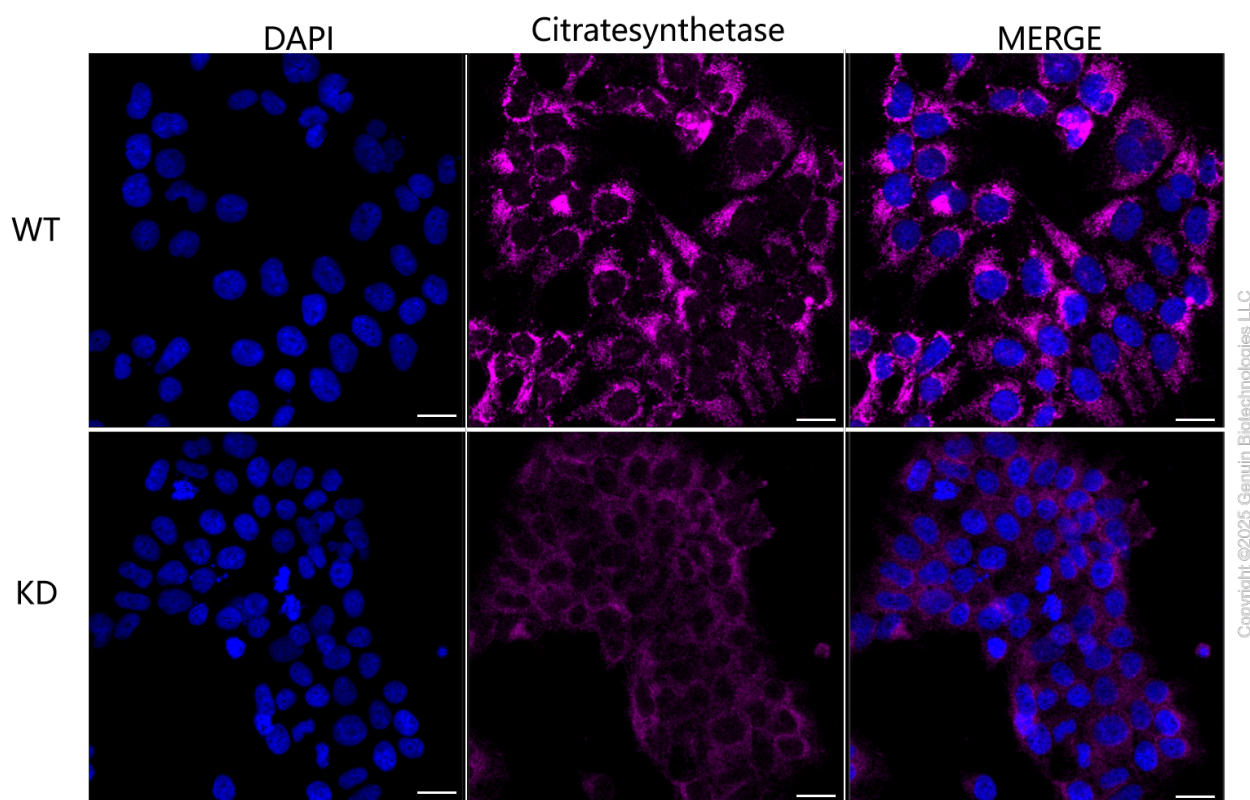
WWW.GENUINBIOTECH.COM



Copyright ©2025 Genuin Biotechnologies LLC

Citratesynthetase-Alexa Fluor® 647

Validation of Citratesynthetase knockdown using flow cytometry. Wild-type(WT, Blue) and knockdown(KD, Green) HeLa cells were stained with anti-Citratesynthetase antibody (Cat#69700, 1:2,000) and analyzed using BD flow cytometer.



Immunocytochemical staining of HeLa cells using anti-Citratesynthetase antibody (Cat#69700, 1:1,000), Top panel: wild-type (WT); Bottom panel: Citratesynthetase shRNA knockdown (KD). Nuclei were stained blue with DAPI; Citratesynthetase was stained magenta with Alexa Fluor® 647. Scale bar, 20 μ m.