

KD-Validated Anti-STAT6 Recombinant Rabbit Monoclonal Antibody



Catalog #: 69717

Aliases

STAT6; Signal Transducer And Activator Of Transcription 6; IL-4-STAT; D12S1644; Signal Transducer And Activator Of Transcription 6, Interleukin-4 Induced; Transcription Factor IL-4 STAT; STAT, Interleukin4-Induced; EC 2.4.1.227; EC 2.7.7.6; IL-4 Stat; STAT6B; STAT6C

Background

Gene Name: STAT6

NCBI Gene Entry: [6778](#)

UniProt Entry: [P42226](#)

Application Information

Molecular Weight: Predicted, 94 kDa, observed, 94 kDa

Clonality: Rabbit monoclonal antibody

Clone ID: 23GB4215

Species Reactivity: Human

Applications Tested: Western blotting (WB), flow cytometry (FCM), immunocytochemistry (IC)

Immunogen

A synthesized peptide derived from human STAT6

Isotype

Rabbit IgG

Storage Buffer

Supplied in PBS (pH 7.4) containing 50% glycerol, and 0.02% sodium azide.

Storage

Store at -20 °C for one year.

Recommended Dilutions

Western Blotting (WB): 1:1,000-1:5,000

Flow Cytometry (FCM): 1:2,000

Immunocytochemistry (IC): 1:100-1:1,000

Note: This product is for research use only.

SUPPORT

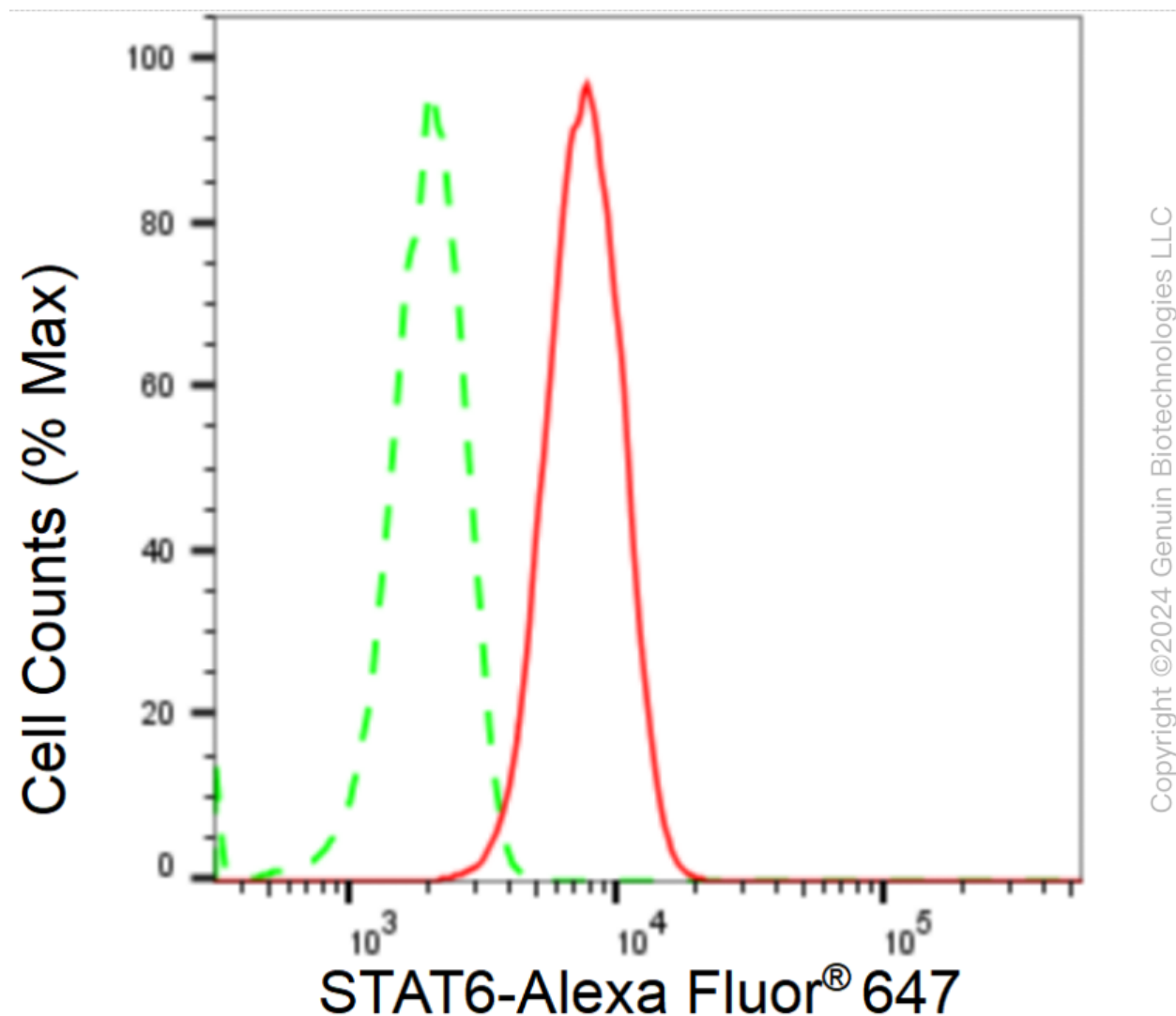
SUPPORT@GENUINBIOTECH.COM
TEL: +1-540-855-7041

ORDERS

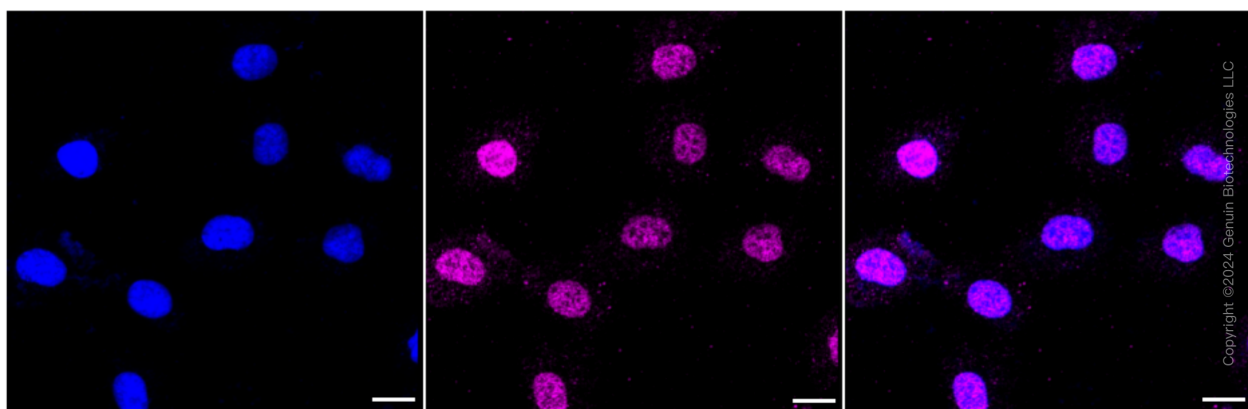
SALES@GENUINBIOTECH.COM
FAX: +1-540-855-7041

WWW.GENUINBIOTECH.COM

Validation Data



Flow cytometric analysis of STAT6 expression in HT-1080 cells using STAT6 antibody (Cat#69717, 1:2,000). Green, isotype control; red, STAT6.



SUPPORT

SUPPORT@GENUINBIOTECH.COM
TEL: +1-540-855-7041

ORDERS

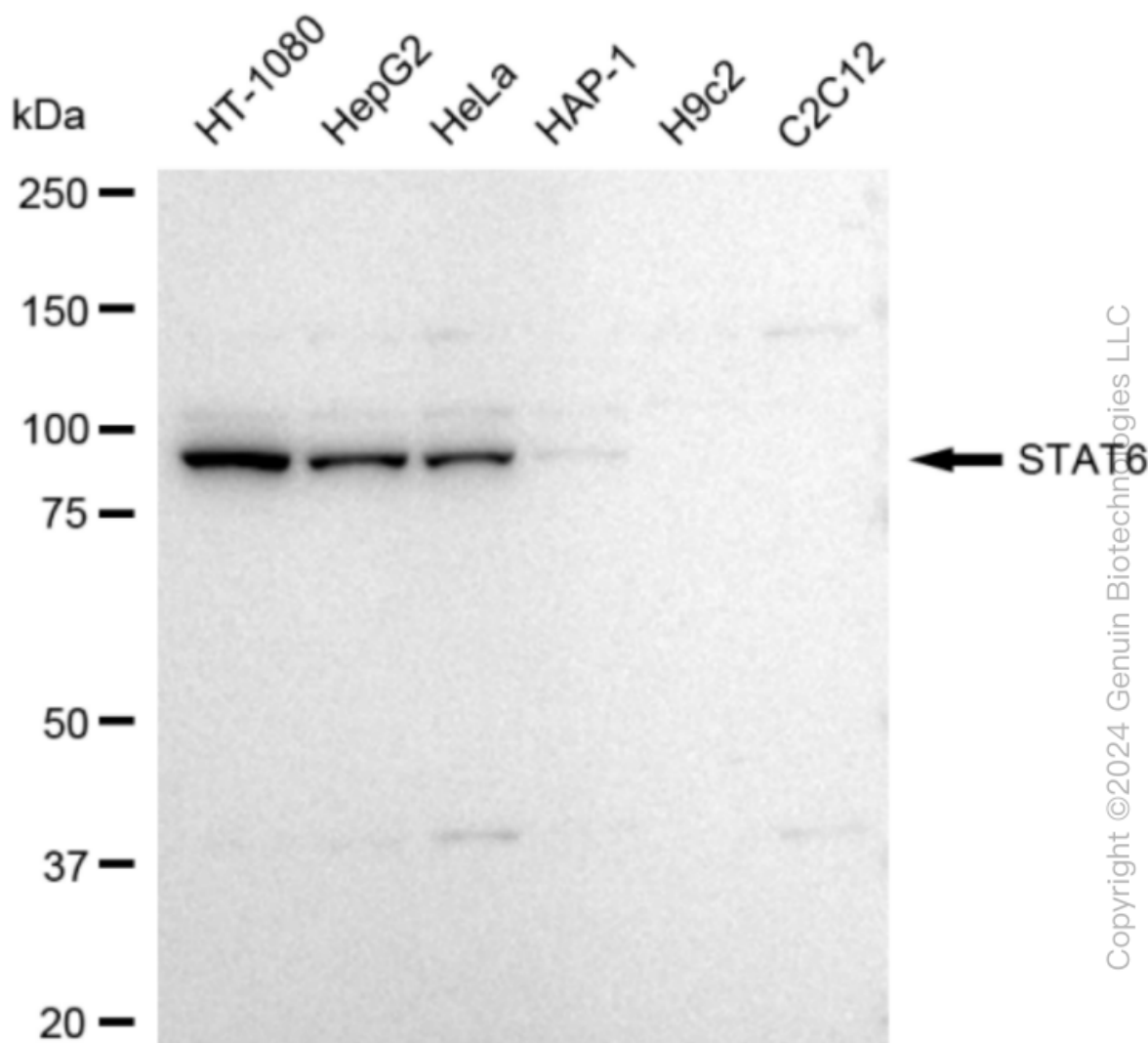
SALES@GENUINBIOTECH.COM
FAX: +1-540-855-7041

WWW.GENUINBIOTECH.COM

KD-Validated Anti-STAT6 Recombinant Rabbit Monoclonal Antibody

PAGE 3

Immunocytochemical staining of HT-1080 cells with STAT6 antibody (Cat#69717, 1:1,000). Nuclei were stained blue with DAPI; STAT6 was stained magenta with Alexa Fluor® 647. Images were taken using Leica stellaris 5. Protein abundance based on laser Intensity and smart gain: Medium. Scale bar: 20 μ m.



Western blotting analysis using anti-STAT6 antibody (Cat#69717). Total cell lysates (30 μ g) from various cell lines were loaded and separated by SDS-PAGE. The blot was incubated with anti-STAT6 antibody (Cat#69717, 1:5,000) and HRP-conjugated goat anti-rabbit secondary antibody (Cat#201, 1:20,000) respectively. Image was developed using FeQ™ ECL Substrate Kit (Cat#226).

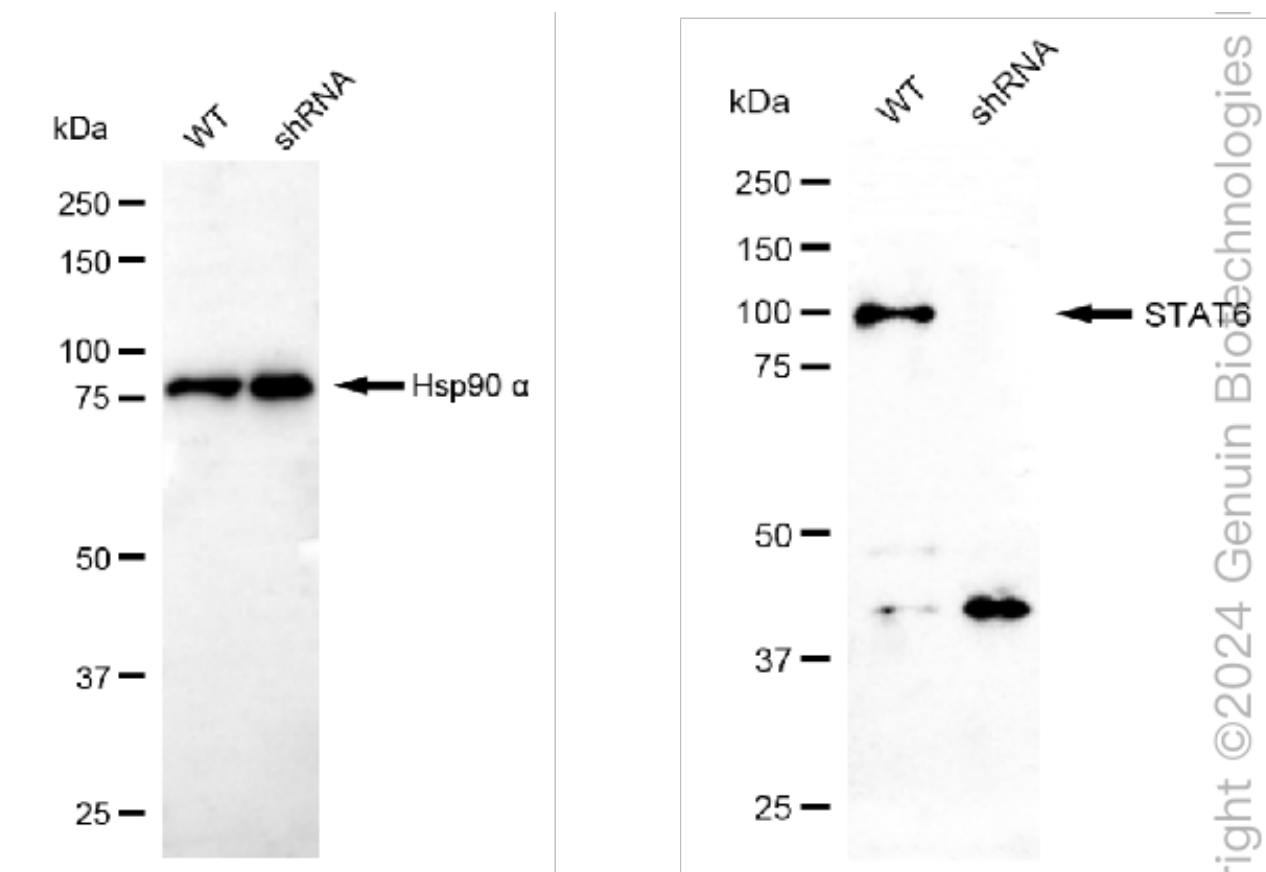
SUPPORT

SUPPORT@GENUINBIOTECH.COM
TEL: +1-540-855-7041

ORDERS

SALES@GENUINBIOTECH.COM
FAX: +1-540-855-7041

WWW.GENUINBIOTECH.COM



Western blotting analysis using anti-STAT6 antibody (Cat#69717). STAT6 expression in wild-type (WT) and STAT6 shRNA knockdown (KD) HeLa cells with 20 µg of total cell lysates. β-Tubulin serves as a loading control. The blot was incubated with anti-STAT6 antibody (Cat#69717, 1:5,000) and HRP-conjugated goat anti-rabbit secondary antibody (Cat#201, 1:20,000) respectively. Image was developed using NaQ™ ECL Substrate Kit (Cat#716).