

KD-Validated Anti-Integrin alpha 5 Recombinant Rabbit Monoclonal Antibody



Catalog #: 69735

Aliases

CD49e; FNRA; Integrin, Alpha 5 (Fibronectin Receptor, Alpha Polypeptide); Fibronectin Receptor, Alpha Polypeptide; Fibronectin Receptor Subunit Alpha; CD49 Antigen-Like Family Member E; Integrin Alpha-5; Integrin Alpha-F; VLA-5; Very Late Activation Protein 5, Alpha Subunit; Fibronectin Receptor, Alpha Subunit; ITGA5/SLC9B1 Fusion; CD49e Antigen; VLA5A

Background

Gene Name: ITGA5

NCBI Gene Entry: [3678](#)

UniProt Entry: [P08648](#)

Application Information

Molecular Weight: Predicted, 115 kDa, observed, 150 kDa

Clonality: Rabbit monoclonal antibody

Clone ID: 23GB880

Species Reactivity: Human, mouse, rat

Applications Tested: Western blotting (WB), flow cytometry (FCM), immunocytochemistry (IC), Immunohistochemistry (IHC)

Immunogen

A synthesized peptide derived from human integrin alpha 5

Isotype

Rabbit IgG

Storage Buffer

Supplied in PBS (pH 7.4) containing 50% glycerol, and 0.02% sodium azide.

Storage

Store at -20 °C for one year.

Recommended Dilutions

Western Blotting (WB): 1:1,000-1:5,000

Flow Cytometry (FCM): 1:2,000

Immunocytochemistry (IC): 1:100-1:1,000

Immunohistochemistry (IHC): 1:100-1:200

SUPPORT

SUPPORT@GENUINBIOTECH.COM
TEL: +1-540-855-7041

ORDERS

SALES@GENUINBIOTECH.COM
FAX: +1-540-855-7041

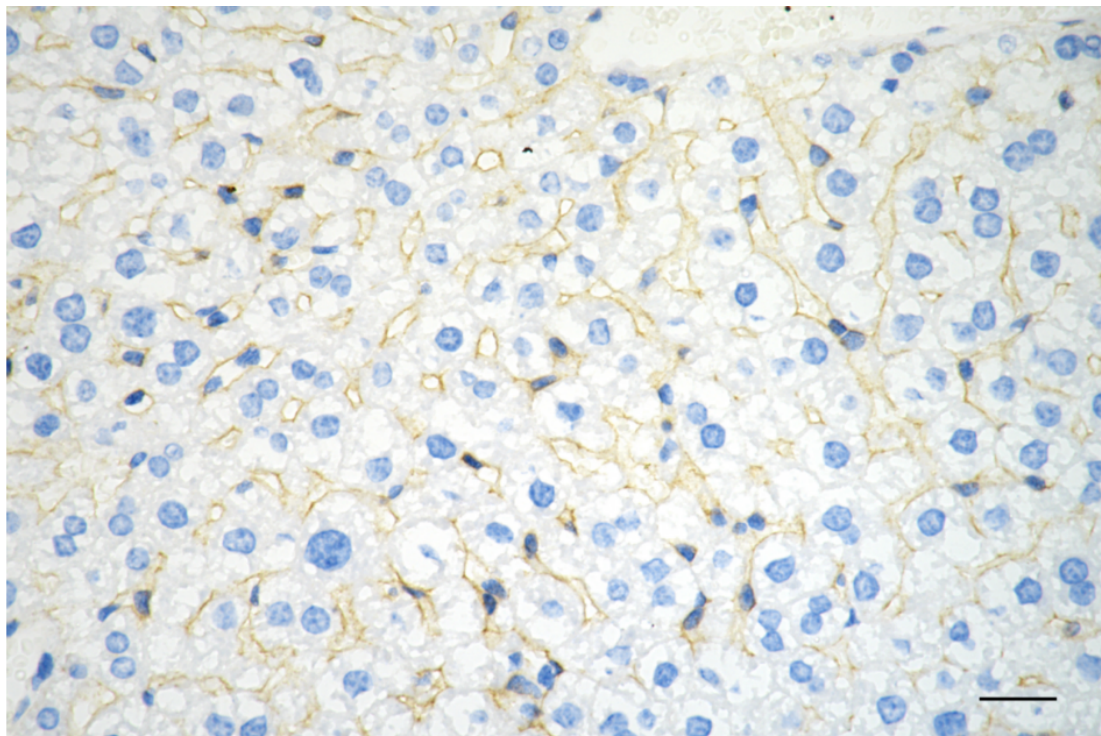
WWW.GENUINBIOTECH.COM

KD-Validated Anti-Integrin alpha 5 Recombinant Rabbit Monoclonal Antibody

PAGE 2

Note: This product is for research use only.

Validation Data



Copyright ©2025 Genuin Biotechnologies LLC

Immunohistochemistry was performed on paraffin-embedded mouse liver using anti-integrin alpha 5 antibody (Cat#69735, 1:200). Antigen retrieval was done in sodium citrate buffer (pH 6.0). DAB was used for detection, with hematoxylin counterstaining. Images were acquired using a Nikon Ci-L Plus microscope (40× objective). Scale bar: 25 μ m.

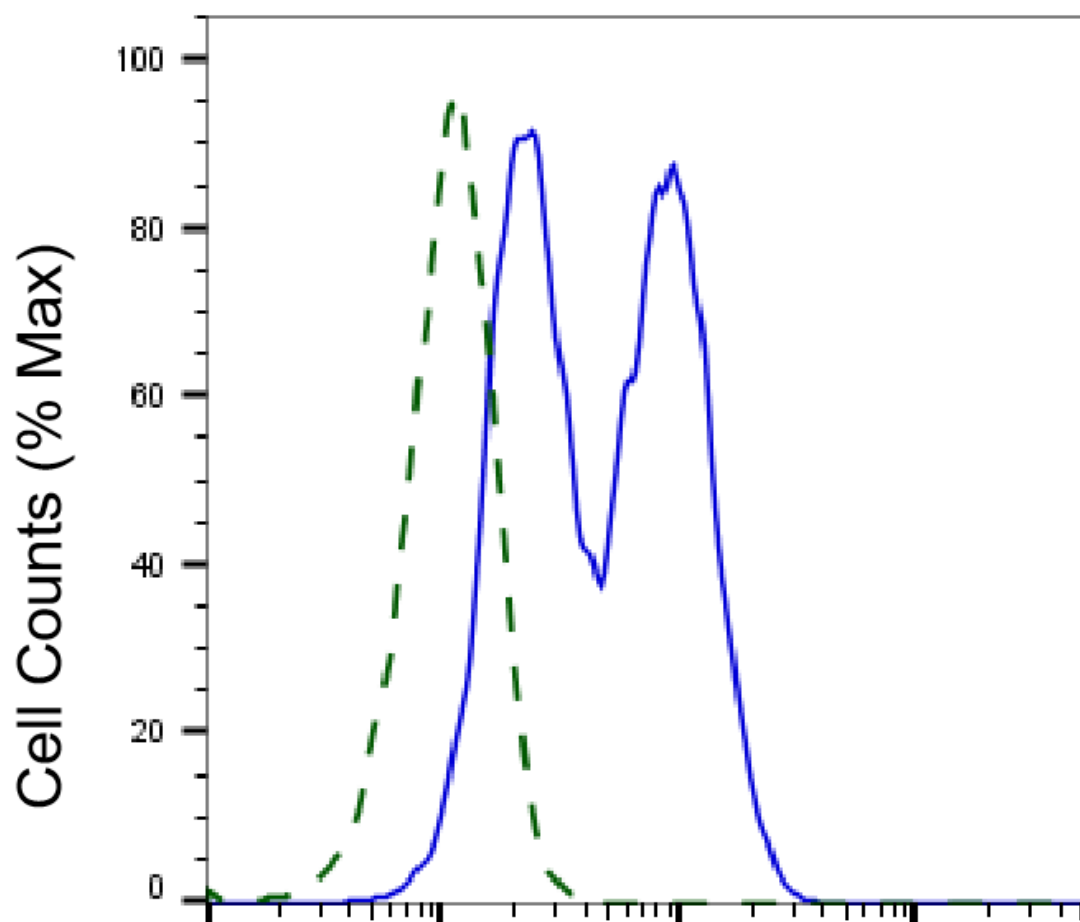
SUPPORT

SUPPORT@GENUINBIOTECH.COM
TEL: +1-540-855-7041

ORDERS

SALES@GENUINBIOTECH.COM
FAX: +1-540-855-7041

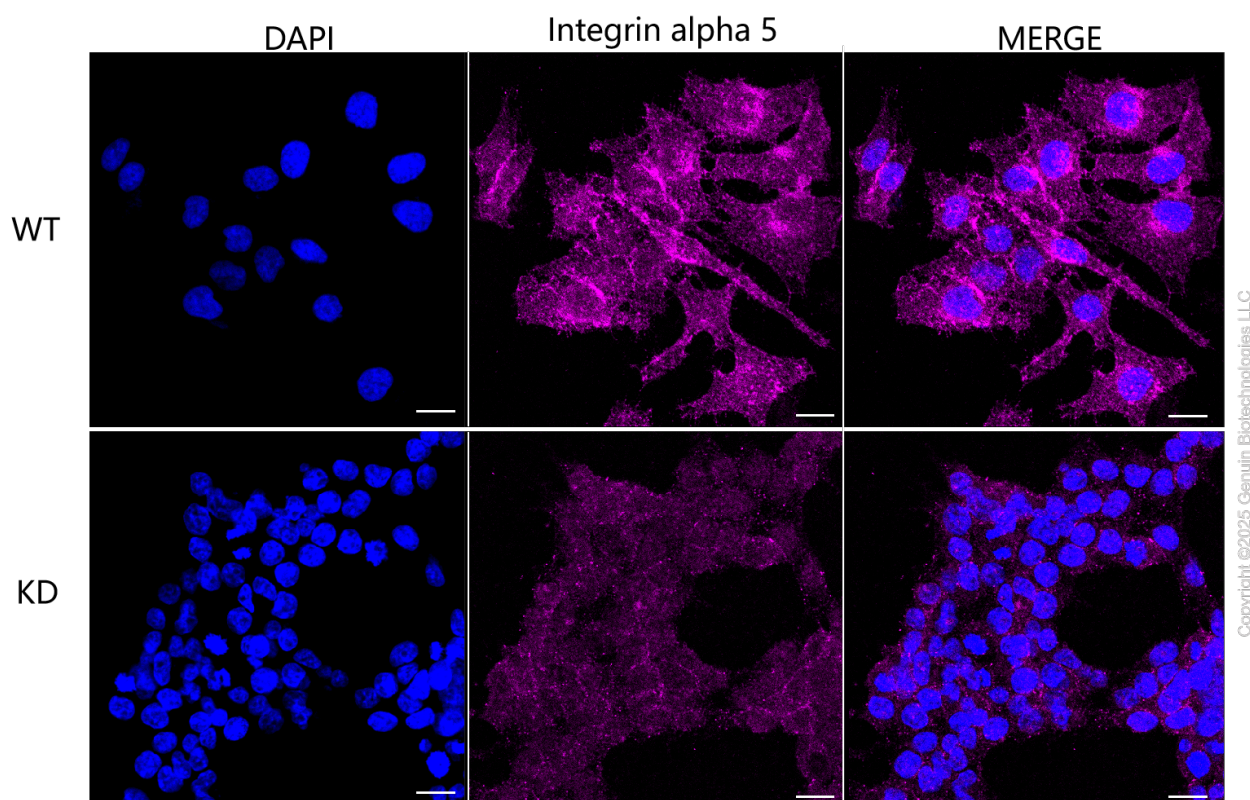
WWW.GENUINBIOTECH.COM



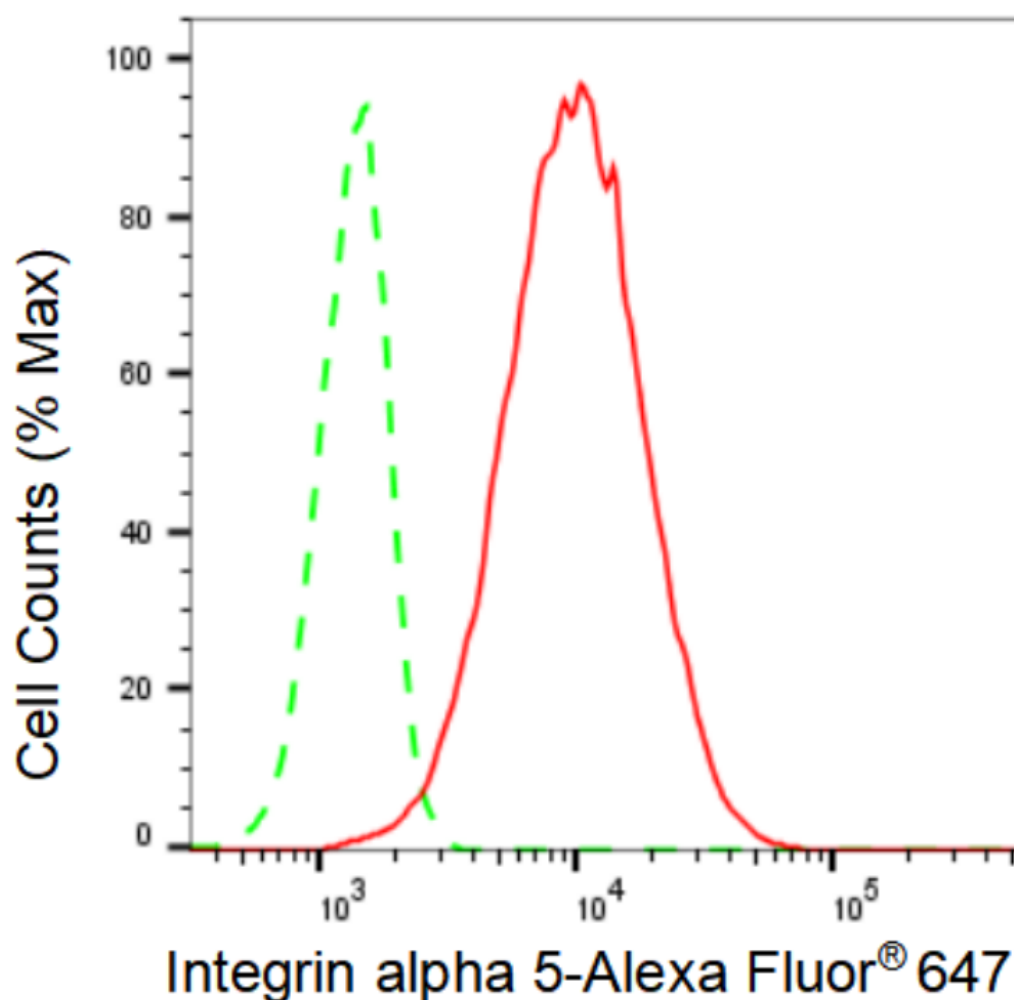
Copyright ©2025 Genuin Biotechnologies LLC

Integrin alpha 5-Alexa Fluor® 647

Validation of Integrin alpha 5 knockdown using flow cytometry. Wild-type(WT, Blue) and knockdown(KD, Green) HeLa cells were stained with anti-Integrin alpha 5 antibody (Cat#69735, 1:2,000) and analyzed using CytoFLEX.

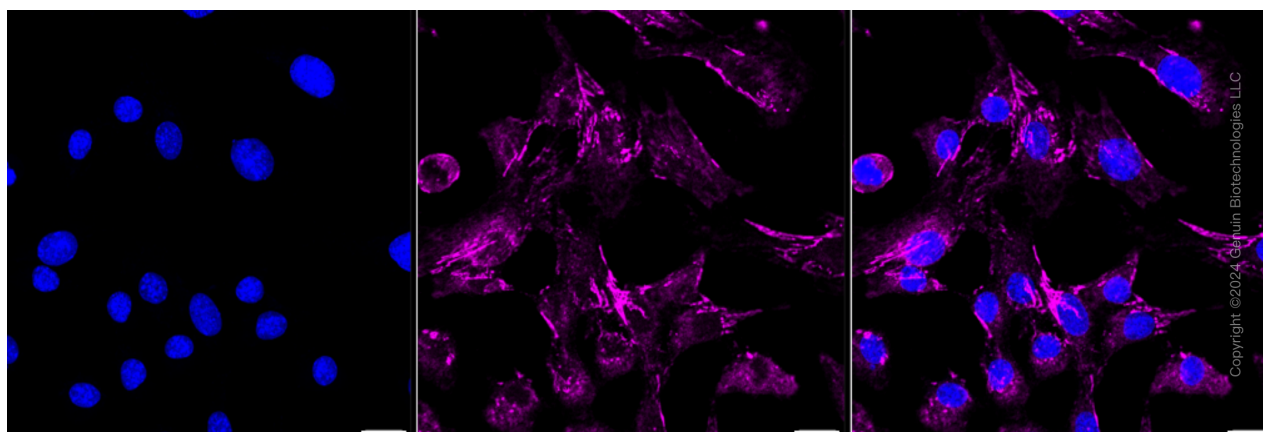


Immunocytochemical staining of HeLa cells using anti-Integrin alpha 5 antibody (Cat#69735, 1:1,000), Top panel: wild-type (WT); Bottom panel: Integrin alpha 5 shRNA knockdown (KD). Nuclei were stained blue with DAPI; Integrin alpha 5 was stained magenta with Alexa Fluor® 647. Scale bar, 20 μ m. Permeabilization: Triton.



Copyright ©2024 Genuin Biotechnologies LLC

Flow cytometric analysis of Integrin alpha 5 expression in C2C12 cells using Integrin alpha 5 antibody (Cat#69735, 1:2,000). Green, isotype control; red, Integrin alpha 5.



Immunocytochemical staining of C2C12 cells with Integrin alpha 5 antibody (Cat#69735, 1:1,000). Nuclei were stained blue with DAPI; Integrin alpha 5 was stained magenta with Alexa Fluor® 647. Images were taken using Leica stellaris 5. Protein abundance based on laser Intensity

SUPPORT

SUPPORT@GENUINBIOTECH.COM
TEL: +1-540-855-7041

ORDERS

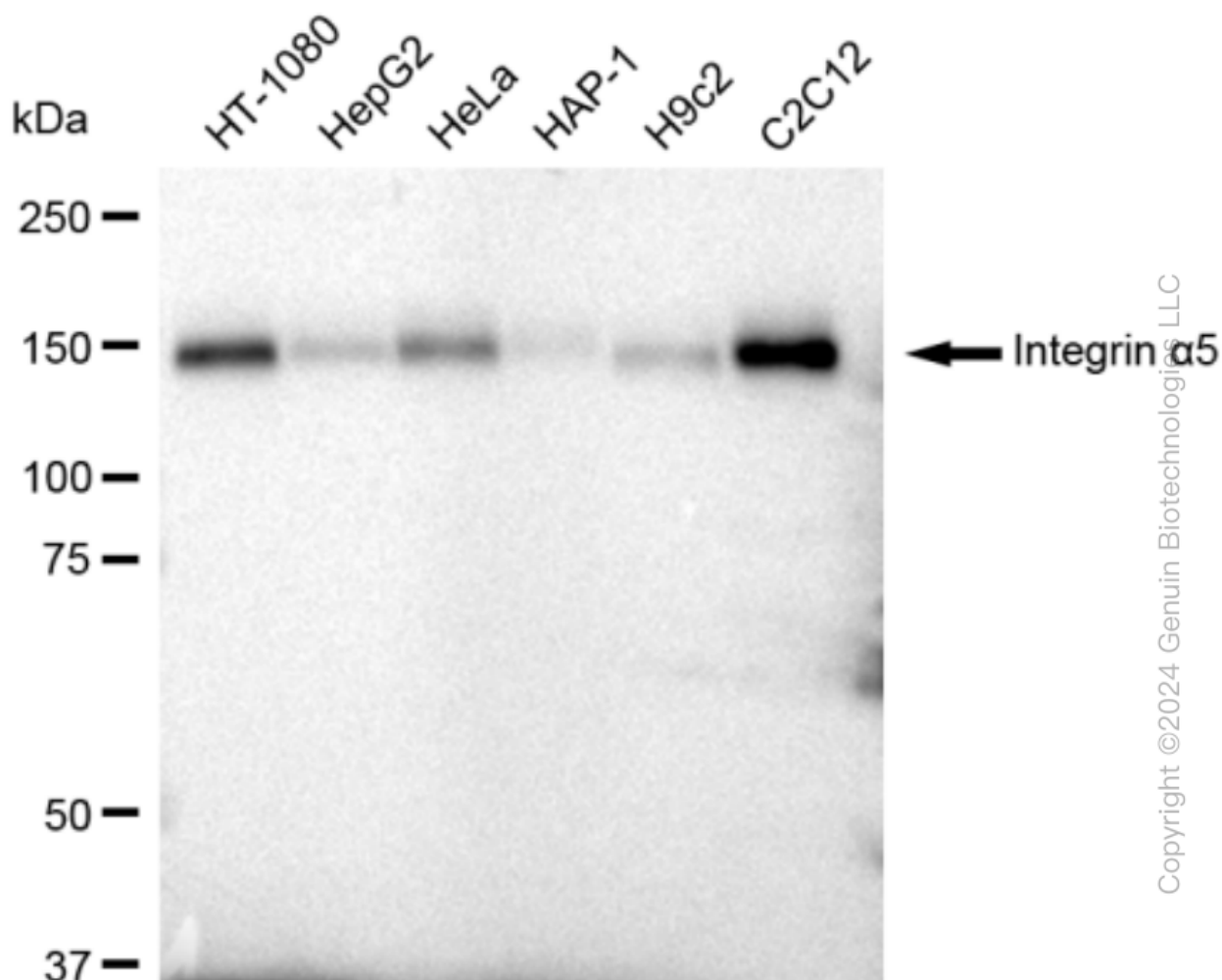
SALES@GENUINBIOTECH.COM
FAX: +1-540-855-7041

WWW.GENUINBIOTECH.COM

KD-Validated Anti-Integrin $\alpha 5$ Recombinant Rabbit Monoclonal Antibody

PAGE 6

and smart gain: Medium. Scale bar: 20 μ m.



Western blotting analysis using anti-Integrin $\alpha 5$ antibody (Cat#69735). Total cell lysates (30 μ g) from various cell lines were loaded and separated by SDS-PAGE. The blot was incubated with anti-Integrin $\alpha 5$ antibody (Cat#69735, 1:5,000) and HRP-conjugated goat anti rabbit secondary antibody (Cat#201, 1:50,000) respectively. Image was developed using FeQ™ ECL Substrate Kit (Cat#226).

SUPPORT

SUPPORT@GENUINBIOTECH.COM
TEL: +1-540-855-7041

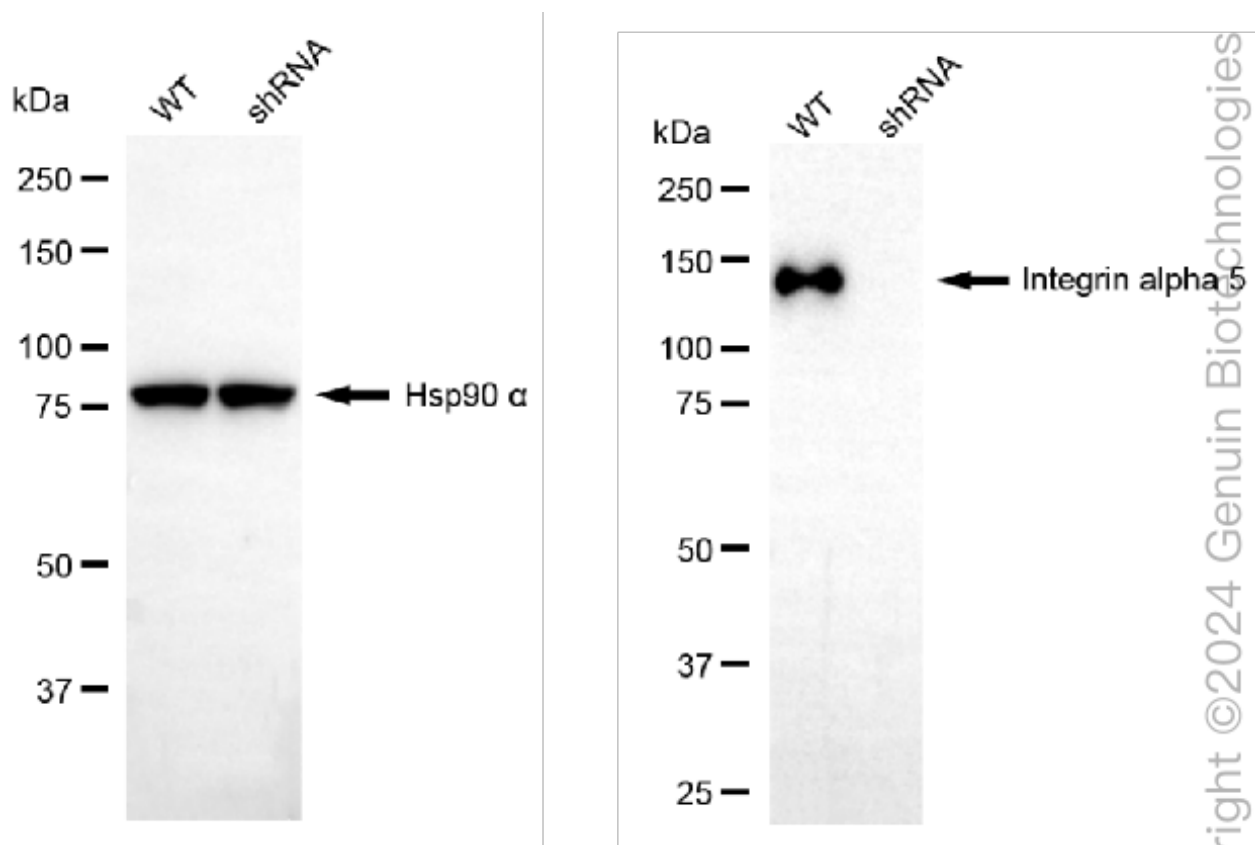
ORDERS

SALES@GENUINBIOTECH.COM
FAX: +1-540-855-7041

WWW.GENUINBIOTECH.COM

KD-Validated Anti-Integrin alpha 5 Recombinant Rabbit Monoclonal Antibody

PAGE 7



Western blotting analysis using anti-Integrin alpha 5 antibody (Cat#69735). Integrin alpha 5 expression in wild type (WT) and Integrin alpha 5 shRNA knockdown (KD) HeLa cells with 30 μ g of total cell lysates. β -Tubulin serves as a loading control. The blot was incubated with anti-Integrin alpha 5 antibody (Cat#69735, 1:5,000) and HRP-conjugated goat anti rabbit secondary antibody (Cat#201, 1:50,000) respectively. Image was developed using FeQ™ ECL Substrate Kit (Cat#226).

SUPPORT

SUPPORT@GENUINBIOTECH.COM
TEL: +1-540-855-7041

ORDERS

SALES@GENUINBIOTECH.COM
FAX: +1-540-855-7041

WWW.GENUINBIOTECH.COM